

# *Student Handbook & Prospectus*


## *Paramedical/Allied Health Sciences Programmes*



**Indira Gandhi National Open University**

Maidan Garhi, New Delhi - 110 068, INDIA

Website : <http://www.ignou.ac.in>



*“Education is a liberating force, and in our age it is also a democratizing force, cutting across the barriers of caste and class, smoothing out inequalities imposed by birth and other circumstances.”*

— Indira Gandhi



**Indira Gandhi National Open University**

Maidan Garhi, New Delhi – 110 068

**APPLICATION FORM FOR  
PARAMEDICAL/ALLIED  
HEALTH SCIENCES PROGRAMMES  
JULY 2010**

**PRICE : Rs.100.00 by cash at the Sales Counter  
Rs.150.00 by Registered Post**

*An electronic version of the Prospectus and Application  
Form is also available on the IGNOU website:  
<http://www.ignou.ac.in>*

### RECOGNITION

**IGNOU** is a CENTRAL UNIVERSITY established by an Act of Parliament in 1985 (Act No. 50 of 1985). IGNOU Degrees/Diplomas/Certificates are recognised by all the members of the Association of Indian Universities (AIU) and are at par with Degrees/Diplomas/Certificates of all Indian Universities/Deemed Universities/Institutions vide UGC Circulars No. F.1-52/2000(CPP-II) dated 5<sup>th</sup> May, 2004; D.O. No.F.1-25/03(CPP-II) dated 28<sup>th</sup> July, 1993; F.1-8/92 (CPP) dated February 1992 & AIU Circular No. EV/B (449)/94/176915-177115 dated January, 1994.

---

**Print Production:** Sh. B. Natarajan, DR(P); Sh. Jitender Sethi, AR(P) and Sh. Sunil Kumar, SO(P)

---

**April, 2010**

© Indira Gandhi National Open University, 2010

*All rights reserved. No part of this work may be reproduced in any form, by mimeograph or any other means, without permission in writing from the Indira Gandhi National Open University, New Delhi.*

*Further information on the Indira Gandhi National Open University Programmes may be obtained from the University's office at Maidan Garhi, New Delhi – 110068 or its website <http://www.ignou.ac.in>*

Printed and published on behalf of the Indira Gandhi National Open University, New Delhi by the Registrar, MPDD.

Word Processing : Sh. Sunil Kumar

Laser Typeset by: Rajshree Computers, V-166A, Bhagwati Vihar, (Near Sec. 2, Dwarka), Uttam Nagar, New Delhi-110059

Printed at: Dee Kay Printers, 5/37A, Kirti Nagar Indl. Area, New Delhi-110015



## Message from the Vice-Chancellor

Dear Learner,

Silver Jubilee Greetings to all of you.

I have great pleasure in presenting you the Prospectus 2009-10 of Indira Gandhi National Open University (IGNOU) for the various certificate, diploma, degree, post-graduate and doctoral research programmes. This National University, established by an Act of Parliament in 1985, has provided opportunities for over 2.5 millions of learners to acquire a university certification, gainful employment, workplace education and career progression. The university is a success story in democratization of education. IGNOU recognizes the importance of sustainable and affordable high quality programmes and courses across disciplines, and at a variety of levels to meet the life-long education, training, capacity building and public service needs of anyone, anytime and anywhere. The university values the appropriate use of Information and Communication Technologies (ICTs) and the satellite media to enhance the quality of teaching-learning process. The self-learning and self-instructional materials developed by IGNOU have earned world-wide recognition.

On November 19th, the Foundation Day, Her Excellency President of India, Smt Pratibha Devisingh Patil, inaugurated the Silver Jubilee initiatives of IGNOU. All its Schools, Divisions, Centres, Units and Regional Centres have taken up a slew of activities to promote education and domain knowledge, thereby, development. A number of landmark initiatives have been launched by Her Excellency. These include : The Gyan Deep — which is an IGNOU-Indian Army move to ensure second employment of the army personnel after their superannuation – a project which the President dedicated to the nation, Flexi-Learning portal and Higher Education Management modules, institution of Raman Chair in Science Education, ISRO Chair in Satellite Education and Rajiv Gandhi International Prize for Educational Technology & Development.

These apart, IGNOU has also started some trend-setting initiatives, such as Community College Scheme which will further facilitate the Skill Development Initiative (SDI) of the Government of India and Dual Mode of Education through Convergence of Conventional Collegiate education and Open and Distance Learning (ODL).



IGNOU is committed to quality education, teaching and capacity building of yours through the ODL pedagogy driven by ICTs. The self-learning study materials have been offered to you in such excellence that you can prepare yourselves easily and feel as if your teachers are seated beside you.

These efforts are supported by personal contacts with experts in the subjects in your Study Centres so that your academic problems are easily solved. Quite often the University organises interactive videoconferencing with learners. Care for learners' education is best taken at IGNOU even as it is in the ODL mode.

In another trend-setting initiative in India, IGNOU has launched 'Student Satisfaction Survey' for you. The survey will try to quantify your basic understanding of concepts related to the chosen subjects and whether the learning materials and academic counselling provided by IGNOU are able to clarify these concepts. The survey aims to assess students' satisfaction levels specifically in such areas as quality of printing, learning materials like video/audio, organisation of academic sessions, performance of academic counsellors, IGNOU staff in the regional centres and whether the learning materials are received by students on time. **You can send your feedback by clicking on the link 'Student Satisfaction Survey' on the home page of the IGNOU website [www.ignou.ac.in](http://www.ignou.ac.in).**

IGNOU functions through a large network of Regional Centres and Study Centres within the country. For learners abroad, IGNOU works through its presence in 34 nations and 53 partner institutions. The university has signed over 50 collaborations with world-class foreign universities in Asia, Europe, Africa, Australia, South America, and also a few in the USA. Similar collaborations are being organised more and more to give IGNOU internationally vibrant excellence. Today, among all Indian universities, IGNOU has the largest number of foreign students, most of them are nationals of other countries.

The common prospectus will give you the comprehensive information about the opportunities IGNOU has opened for student communities. We have so far 338 academic programmes. More are in the offing. All these programmes are for capacity building of people of all classes and echelons, aiming at bettering their livelihood.

Enjoy your studies at IGNOU. I wish you all success.



December 1, 2009

(V.N. Rajasekharan Pillai)  
Vice-Chancellor

# CONTENTS

|  |           |
|--|-----------|
| <b>1. IGNOU : A BRIEF PROFILE .....</b>  | <b>9</b>  |
| 1.1 Introduction .....   | 10        |
| 1.2 Vision .....   | 10        |
| 1.3 Prominent Features .....   | 10        |
| 1.4 Important Achievements .....   | 11        |
| 1.5 The Schools of Studies .....   | 11        |
| 1.6 Academic Programmes .....  | 12        |
| 1.7 Course Preparation .....   | 12        |
| 1.8 Credit System .....  | 12        |
| 1.9 Programme Delivery .....   | 12        |
| 1.10 Support Services .....  | 113       |
| <b>2. CHRISTIAN MEDICAL ASSOCIATION OF INDIA (CMAI) .....</b>                                    | <b>13</b> |
| 2.1 Introduction .....   | 13        |
| 2.2 Objectives .....   | 14        |
| 2.3 IGNOU-CMAI Chair .....   | 14        |
| <b>3. APPOLLO HOSPITAL EDUCATION &amp; RESEARCH<br/>FOUNDATION (AHERF) .....</b>                 | <b>15</b> |
| <b>4. CENTRE FOR PARAMEDICAL SCIENCES (CPMS) .....</b>   | <b>15</b> |
| 4.1 Introduction .....   | 15        |
| 4.2 Objectives .....   | 15        |
| 4.3 List of Paramedical/Allied Health Sciences Programmes .....                                  | 16        |
| <b>5. BACHELOR'S DEGREE PROGRAMMES .....</b>   | <b>18</b> |
| 5.1 Bachelor / B.Sc. in Medical Laboratory Technology (BMLT) .....                               | 18        |
| 5.2 Bachelor / B.Sc. in Medical Record Science & Health Information<br>Technology (BMRHIT) ..... | 19        |

|            |   |           |
|------------|---|-----------|
| 5.3        | Bachelor / B.Sc. in Optometry and Ophthalmic Techniques/<br>Technology (BSCHOT) ..... | 20        |
| 5.4        | Bachelor / B.Sc. in Radiation Therapy Technology (BRTT) .....                         | 21        |
| 5.5        | Bachelor / B.Sc. in Medical Imaging Technology (BMIT) .....                           | 21        |
| 5.6        | Bachelor / B.Sc. in Anaesthesia & Critical Care Technology (BACT) .....               | 22        |
| <b>6.</b>  | <b>DIPLOMA PROGRAMMES .....</b>   | <b>23</b> |
| 6.1        | Diploma in Medical Laboratory Technology (DMLT) .....                                 | 23        |
| 6.2        | Diploma in Optometry (DOPT) .....   | 24        |
| 6.3        | Diploma in Radio Imaging Technology (DRIT) .....                                      | 25        |
| <b>7.</b>  | <b>ONLINE POST GRADUATE CERTIFICATE PROGRAMMES .....</b>                              | <b>26</b> |
| 7.1        | Post Graduate Certificate in Health Insurance (PGCHI) .....                           | 26        |
| 7.2        | Post Graduate Certificate in Medical Informatics (PGCMI) .....                        | 26        |
| 7.3        | Post Graduate Certificate in Medical Laws (PGCML) .....                               | 26        |
| 7.4        | Post Graduate Certificate in Quality Management in Healthcare (PGCQM) .....           | 27        |
| <b>8.</b>  | <b>HOW TO APPLY .....</b>   | <b>27</b> |
| <b>9.</b>  | <b>MEDIUM OF INSTRUCTION .....</b>  | <b>27</b> |
| <b>10.</b> | <b>COMMENCEMENT OF THE COURSE .....</b>   | <b>27</b> |
| <b>11.</b> | <b>AGE .....</b>  | <b>27</b> |
| <b>12.</b> | <b>UNIVERSITY RULES .....</b>   | <b>28</b> |
| 12.1       | Educational Qualifications Awarded By Private Institutions .....                      | 28        |
| 12.2       | Incomplete and Late Applications .....  | 28        |
| 12.3       | Validity of Admission .....   | 28        |
| 12.4       | Simultaneous Registration .....   | 28        |
| 12.5       | Re-Registration .....   | 28        |
| 12.6       | Re-admission .....  | 29        |
| 12.7       | Reservation .....   | 29        |
| 12.8       | Scholarships and Reimbursement of Fee .....   | 29        |
| 12.9       | Refund of Fee .....   | 29        |
| 12.10      | Study Material and Assignments .....  | 29        |



|            |   |           |
|------------|---|-----------|
| 12.11      | Counselling of Examination Centre .....   | 30        |
| 12.12      | Change/Correction of Address .....  | 30        |
| 12.13      | Change of Region/Study Centre .....   | 30        |
| 12.14      | Term-end Examination .....  | 30        |
| 12.15      | Official Transcripts .....  | 31        |
| 12.16      | Disputes on Admission and Other University Matters .....  | 31        |
| 12.17      | Recognition .....   | 31        |
| <b>13.</b> | <b>IGNOU POLICY REGARDING SEXUAL HARASMENT AT THE<br/>WORK PLACE .....</b>                                      | <b>32</b> |
|            | <b>WHOM TO CONTACT FOR WHAT .....</b>   | <b>33</b> |
|            | <i>Annexure-1:</i> <b>List of Programme Study Centres .....</b>   | <b>34</b> |
|            | <i>Annexure-2:</i> <b>Addresses &amp; Codes of Regional Centres and<br/>Recognised Regional Centres .....</b>   | <b>49</b> |
|            | <i>Annexure-3:</i> <b>State Codes .....</b>   | <b>57</b> |
|            | <i>Annexure-4:</i> <b>Educational Qualificational Code .....</b>  | <b>58</b> |
|            | <i>Annexure-5:</i> <b>List of Board Codes .....</b>   | <b>59</b> |
|            | <i>Annexure-6:</i> <b>Bank and Branches Designated to Collect<br/>the Fees in Cash from IGNOU Student .....</b> | <b>60</b> |
|            | <i>Annexure-7:</i> <b>Challan Form .....</b>  | <b>63</b> |
|            | <b>Application Form: Instructions and Codes .....</b>   | <b>65</b> |



## 1. IGNOU : A BRIEF PROFILE

On 19th November, 2009, IGNOU enters in its 25th year; a significant in its illustrious growth in becoming the World's largest university. The year-long Silver Jubilee celebrations were inaugurated by Her Excellency the President of India, Shrimati Pratibha Devisingh Patil on its foundation day to be celebrated throughout the year, 2010.

Indira Gandhi National Open University (IGNOU) was established in 1985 by Act of Parliament (50 of 1985) has come a long way since its inception in 1985. Since then, the IGNOU has undergone rapid expansion and emerged as an international institution in the field of Open Distance Learning. IGNOU now has a student strength of 2.5 million cumulative student enrolments in different levels of programmes range from Doctoral to Certificate in niche market-oriented areas such as Rural Development, Journalism, Intellectual Property Rights, Hospitality Management, IT Management, Clinical Cardiology and Information Technology to Awareness programmes like Computer Literacy, Rural Artisans and HIV/AIDS. The University is providing a cost-effective education to its students.

The university functions through a network comprising the Headquarters, Regional Centres at States/UTs, Study Centre and Partner Institutions within the Country and in 34 Countries Overseas. It is now widely accepted as a system leader in the field of open and distance learning the world over. The University offers 338 Certificate, Diploma, Degree and Doctoral programmes through 21 Schools of Studies, and 52 Partner Institutions spread across 34 countries with the help of 404 teachers and academics and 1,205 administrative staff. The additional help also sought from about 36,000 part-time academic counsellors.

The IGNOU caters to learners from rural and tribal areas, disability groups, jails and rehabilitation centres the employers and the employed. Educational development of North-East Region (NER) is another focus area. 10% of the annual plan is exclusively earmarked to the development of the NER.

The University has launched Bachelor Degree, Diploma and Certificate Programmes for capacity building in the area of Paramedical and Allied Health Sciences. The Bachelor Degree and Diplomas are regular full time programmes whereas Certificate Programmes are being offered through online mode. The objective of these innovative, need-based and relevant programmes is to develop appropriate human resources for health sector by providing necessary knowledge, skills and competencies. We are making use of the state-of-the art facilities of renowned hospitals for providing the face-to-face programmes as well as for hands-on training in these activities. The collaboration with Christian Medical Association of India and Apollo Hospital are recently adopted successful models of public private participation by IGNOU.

The university provides a multi-media learning system comprising print, audio, video, radio, television, teleconferencing, interactive radio counselling, internet-based learning and face-to-face interactives and through ICTs, counselling and practicals. Reaching a large number of students and further enriching/explaining the printed study materials have been the major objectives of the above listed multiple media. The University has a state-of-the art Electronic Media Production Centre (EMPC). The various media resources available in the university are regular two-way audio and one-way video teleconferencing, Interactive radio counselling, Gyan Darshan, Gyan Vani, Edusat or Educational Satellite and Pan-Africa Satellite hub.

A convergence between the Conventional system and the ODL system through enhanced and optimal utilization of physical facilities, intellectual and knowledge resources was brought about through the launching of the Convergence Scheme.

This prospectus provides you the necessary information on nomenclature of the programmes, eligibility criteria, programme duration, fee structures, examinations and study centres, etc. I hope you will find this prospectus helpful in pursuing your studies in IGNOU.

## 1.1 Introduction

The Indira Gandhi National Open University was established by an Act of Parliament in 1985 to achieve the following objectives:

- democratising higher education by taking it to the doorsteps of the learners
- providing access to high quality education to all those who seek it irrespective of age, region, religion and gender
- offering need-based academic programmes by giving professional and vocational orientation to the courses
- promoting and developing distance education in India
- setting and maintaining standards in distance education in the country as an apex body.

## 1.2 Vision

Indira Gandhi National Open University, the national resource centre for open and distance learning with international recognition and presence, shall provide seamless access to sustainable and learner-centric quality education, skill upgradation and training to all by using innovative technology and methodologies and ensuring convergence of existing systems for massive human resource required for promoting integrated national development and global understanding.

In order to fulfill the vision of democratizing higher education and providing access to all segments of people, the University

- imparts education and knowledge through various flexible means suited to the open and distance education mode, full time face-to-face study programmes including information and communication technologies;
- provides higher education and training to large sections of population, particularly the disadvantaged segments of the society;
- promotes national integration and integrated development of human personality; and
- encourages, co-ordinates and assists open universities and distance learning systems to improve

## 1.3 Prominent Features

IGNOU has certain unique features such as:

- international jurisdiction
- flexible admission rules
- individualised study: flexibility in terms of place, pace and duration of study
- use of latest information and communication technologies
- nationwide student support services network
- cost-effective programmes
- modular approach to programmes

- resource sharing, collaboration and networking with conventional Universities, Open Universities and other Institutions/Organisations
- socially and academically relevant programmes based on students need analysis
- convergence of open and conventional education systems

## 1.4 Important Achievements

- Emergence of IGNOU as the largest Open University in the World.
- Recognition as Centre of Excellence in Distance Education by the Commonwealth of Learning (1993).
- Taking IGNOU programmes to African and West Asian countries including Maldives, Mauritius, Nepal and Seychelles in all, to 35 countries.
- Award of Excellence for Distance Education Materials by Commonwealth of Learning (1999).
- Launch of a series of 24 hour Educational Channels ‘Gyan Darshan’. IGNOU is the nodal agency for these channels and regular transmissions are done from the studio at EMPC, IGNOU.
- Launch of ‘Edusat’ videoconferencing channel (2 way video, 2 way audio).
- Launch of Gyan Vani and other dedicated educational FM channels.

## 1.5 The Schools of Studies

With a view to develop interdisciplinary studies, the University operates through its Schools of Studies. Each School is headed by a Director who arranges to plan, supervise, develop and organise its academic programmes and courses in coordination with the School staff and different academic, administrative and service wings of the University. The emphasis is on providing a wide choice of courses at different levels. The following Schools of Studies currently are in operation:

- School of Humanities (SOH)
- School of Sciences (SOS)
- School of Continuing Education (SOCE)
- School of Management Studies (SOMS)
- School of Computer & Information Sciences (SOCIS)
- School of Law (SOL)
- School of Gender and Development Studies (SOGDS)
- School of Interdisciplinary and Trans-disciplinary Studies (SOITS)
- School of Social Work (SOSW)
- School of Social Sciences (SOSS)
- School of Education (SOE)
- School of Engineering & Technology (SOET)
- School of Health Sciences (SOHS)
- School of Agriculture (SOA)
- School of Journalism and New Media Studies (SOJNMS)
- School of Tourism and Hospitality Service Management (SOTHSM)

- School of Vocational Education and Training (SOVET)
- School of Foreign Languages (SOFL)
- School of Performing & Visual Arts (SOPVA)

## 1.6 Academic Programmes

The University offers both short-term and long-term programmes leading to Certificates, Diplomas and Degrees, which are conventional as well as innovative. Most of these programmes have been developed after an initial survey of the demand for such Programmes. They are launched with a view to fulfil the learner's needs for:

- certification,
- improvement of skills,
- acquisition of professional qualifications,
- continuing education and professional development at work place,
- self-enrichment,
- diversification and updation of knowledge, and
- empowerment.

## 1.7 Course Preparation

Learning material is specially prepared by teams of experts drawn from different Universities and specialised Institutions in the area spread throughout the country as well as in-house faculty. This materials are scrutinised by the content experts, supervised by the instructors/unit designers and edited by the language experts at IGNOU before they are finally sent for printing. Similarly, audio and video cassettes are produced in consultation with the course writers, in-house faculty and producers. The material is previewed and reviewed by the faculty as well as outside experts and edited/modified, wherever necessary, before they are finally dispatched to the students, Study Centres and Telecast through Gyan Darshan.

## 1.8 Credit System

The University follows the 'Credit System' for most of its programmes. Each credit in our system is equivalent to 30 hours of student study comprising all learning activities (i.e. reading and comprehending the print material, listening to audio, watching video, attending counseling sessions, teleconference and writing assignment responses). Thus, a 4-credit course involves 120 hours of study. This helps the learner to know the academic effort he/she has to put in, to successfully complete a course. Completion of an academic programme (Degree or Diploma) requires successful completion of the assignments, practicals projects and the term-end examination of each course in a programme.

## 1.9 Programme Delivery

The methodology of instruction in this University is different from that of the conventional Universities. The open university system is more learner-oriented and the learner is an active participant in the pedagogical (teaching and learning) process. Most of the instructions are imparted through distance education methodology and face-to-face mode as per the requirement.

The University follows a multimedia approach for instruction, which comprises:



- a) **Self Instructional Written Material:** The printed study material (written in self-instructional style) for both theory and practical components of the programmes is supplied to the learners in batches of blocks for every course (on an average 1 block per credit). A block which comes in the form of a booklet usually comprises 3 to 5 units.
- b) **Audio-Visual Material Aids:** The learning package contains audio and video CDS which have been produced by the University for better clarification and enhancement of understanding of the course material given to the learners. A video programme is normally of 25-30 minutes duration. The video cassettes are screened at the study centres during specific sessions which are duly notified for the benefit of the learners.  
  
The video programmes are telecast on National Network of Doordarshan and Gyan Darshan. All Gyan Vani stations are broadcasting curriculum based audio programmes. In addition, some selected stations of All India Radio are also broadcasting the audio programmes. Learners can confirm the dates for the programmes from their study centres. The information is also provided through the university website.
- c) **Counselling Sessions:** Normally counselling sessions are held as per schedule drawn by the Study Centres. These are mostly held outside the regular working hours of the host institutions where the study centres are located.
- d) **Teleconferences:** Live teleconferencing sessions are conducted via satellite through interactive Gyan Darshan Channel as well as simulcasted on 'Edusat' channel from the University studios at EMPC, the schedule of which is made available at the study centres.
- e) **Practicals/Project Work:** Some Programmes have practical/project component also. Practicals are held at designated institutions for which schedule is provided by the Study Centres. Attendance at practicals is compulsory. For project work, comprehensive project guide, in the form of a booklet, is provided to the student along with the study materials.

## 1.10 Support Services

In order to provide individualised support to its learners, the University has a large number of Study Centres, spread throughout the country. These Study Centres are coordinated by 59 Regional Centres and Recognised Regional Centres. At the Study Centres, the learners interact with the Academic Counselors and other learners, refer to books in the Library, watch/listen to video/audio programmes and interact with the Coordinator on administrative and academic matters. The list of Regional and Study Centres is given in this handbook. Support services are also provided through Work Centres, Programme Study Centres, Skill Development Centres and Special Study Centres.

## 2. CHRISTIAN MEDICAL ASSOCIATION OF INDIA (CMAI)

### 2.1 Introduction

The Christian Medical Association of India (CMAI), a registered national health NGO, has been in the service of this country for more than a hundred years and provides exemplary healthcare and training without making profit as a motive.

Founded in 1805, CMAI's membership extends to individuals as well as institutions and as on date, it includes over 9000 health professionals and 330 hospitals and health centres. CMAI's individual membership is composed of five sections – Doctors Section, Nurses League, Administrators Section, AHP Section and Chaplains Section.

CMAI has been a pioneer in healthcare training in this country and conducts formal and non-formal training for doctors, nurses and allied health professionals. The guiding principle has always been to make healthcare accessible to all. Some of the CMAI's pioneering institutes and hospitals like the Christian Medical College (Vellore) and Christian Medical College (Ludhiana) are recognised both nationally and internationally for their quality of care and the highest standards of medical training and practice, and commitment to the poor.

CMAI conducts training for students in medicine, nursing and allied paramedical programmes. CMAI's two Nursing Boards (Mid India Board of Education and Board of Nursing Education – South India) are accredited by the Indian Nursing Council for GNM and ANM Courses across the country.

CMAI Allied Health training dates back to 1927. CMAI Central Educational Board accreditates 86 course offerings in more than 50 training centres including 6 medical colleges. These trainings are on par with the best that is available anywhere in the world.

Website: <http://www.cmai.org>

## 2.2 Objectives

- \* Prevention and relief of human suffering irrespective of caste, creed, community, religion and economic status.
  - Promotion of knowledge of the factors governing health.
  - Coordination of activities for training doctors, nurses, allied health professionals and others involved in the ministry of healing.
  - Implementation of schemes for comprehensive healthcare, family planning and community welfare.
  - Rendering health in calamities and disasters of all kinds.

## 2.3 IGNOU-CMAI Chair

IGNOU and CMAI have come together to establish an IGNOU-CMAI Chair of Health Sciences with the following objectives:

- i. To plan, develop, and run academic programmes for health (including medical and allied health) and other socially relevant programmes for capacity building for various health functionaries.
- ii. To form a Joint Advisory Committee (JAC) for the planning and development and implementation of various programmes of study.
- iii. To collaborate in academic activities such as conduct of conferences, seminars, research etc.
- iv. To undertake and execute all such activities required for the fulfillment of the objectives described above.

The IGNOU-CMAI Chair will design and offer courses in different areas of health sciences in coordination with School of Health Sciences, Centre for Paramedical Sciences and other Schools/Centres of IGNOU as appropriate. It will bring to its programmes the combined strength of CMAI network in ensuring the technical quality of training so as to provide the nation with skilled and qualified healthcare personnel.

### 3. APOLLO HOSPITAL EDUCATION & RESEARCH FOUNDATION (AHERF)

The Apollo Group of Hospital of India is the largest group of healthcare provider in Asia Pacific region with 44 network hospitals in India and abroad. The group is offering state of the art comprehensive health care through its different specialty and super specialty hospitals. Besides providing quality health care Apollo Hospitals Group always understood the need for quality health education and research and this is reflected in the group's mission statement: "Our mission is to bring healthcare of international standards within the reach of every individual. We are committed to the achievement and maintenance of excellence in education, research and healthcare for the benefit of humanity."

Apollo Hospitals Education & Research Foundation (AHERF), under the Apollo Group, is running a variety of educational and training programs which includes, Nursing, Hospital administration, Physiotherapy, Emergency Medicine, Surgery and Anesthesiology. It is engaged in research and education in healthcare, along with Medvarsity, the virtual medical university under the Apollo Group of hospitals. The programmes conducted by AHERF and Medvarsity have been recognized by a number of Indian & International Organizations and Universities. The first medical e-learning venture was established in April 2000 by the Apollo Group to "deliver Quality distance education to the health care providers, using information technology enabled learning tools, aimed at improving the standards of medical education and practice". It follows a hybrid model, having a combination of both online and off line education. Medvarsity offers courses/training programs for doctors, nurses and other graduates interested in entering health care sector. It has been associated and affiliated to a number of reputed national and International bodies. AHERF is also engaged in research activities which includes basic, clinical, health system and community based research in all the Apollo Hospitals across India. Website: <http://www.apollohospitals.com>

### 4. CENTRE FOR PARAMEDICAL SCIENCES (CPMS)

#### 4.1 Introduction

"Centre for Para Medical Sciences" has been created to deal with the cadre of trained Para-medical/ Allied Health personnel for providing efficient health care at primary, secondary and tertiary levels. The proposed centre will develop academic programmes (Degree, Diploma and certificate) for various categories of Para-medical/Allied Health personnel, and ensure the quality and standard of Para-medical/Allied Health Sciences training in the country. (E.mail : [ignou.cpms@gmail.com](mailto:ignou.cpms@gmail.com))

#### 4.2 Objectives

- Creation of a cadre of trained Para-Medical/Allied Health personnel for providing effective & efficient health care at Primary, Secondary and Tertiary levels;
- Planning, developing and launching of degree, diploma and certificate level programmes for various categories of Para Medical/Allied Health personnel;
- Strengthening the professional competencies of Para Medical/Allied Health professionals using ICT enabled education and interactive multimedia;
- Identification & collaboration with institutions involved in paramedical/Allied Health Sciences training;

- Ensuring the quality and standards of paramedical/Allied Health Sciences education and training in the country;
- Capacity building of paramedical/Allied Health personnel and functionaries through research, training and innovations.

### 4.3 List of Paramedical/ Allied Health Sciences Programmes

The Eligibility, duration, programme fee and medium of instruction for Paramedical/Allied Health Sciences Programmes are given in the following table:

| S. No.  | Name of the Programme  | Prog. Code | Eligibility   | Min. age as on 1 <sup>st</sup> July of the academic year | Duration in the years |      | Programme Fee (per year) | Medium of instruction |
|---|--|------------|---|--|-----------------------|------|--------------------------|-----------------------|
|   |  |            |   |  | Min.                  | Max. |                          |                       |
| BACHELOR DEGREE PROGRAMMES  |  |            |   |  |                       |      |                          |                       |
| 1.  | Bachelor/B.Sc. in Medical Laboratory Technology                          | BMLT       | 10+2 or its equivalent with science subjects (Physics, Chemistry, Biology) with minimum 45% marks<br>Or<br>10+2 with Medical Laboratory Technology (Vocational) | 17 Year  | 4                     | 6    | 25,000/-                 | English               |
| 2.  | Bachelor/B.Sc. in Medical Record Science & Health Information Technology | BMRHIT     | 10+2 or its equivalent with minimum 45% marks (Science student will be given preference)  | 17 Year  | 3                     | 5    | 20,000/-                 | English               |
| 3.  | Bachelor/B.Sc. in Optometry and Ophthalmic Techniques/Technology         | BSCHOT     | 10+2 or its equivalent with science subjects (Physics, Chemistry, Biology) with minimum 45% marks   | 17 Year  | 4                     | 6    | 23,800/-                 | English               |
| 4.  | Bachelor/B.Sc. in Radiation Therapy Technology                           | BRTT       | 10+2 or its equivalent with science subjects (Physics, Chemistry, Biology) with minimum 45% marks   | 17 Year  | 4                     | 6    | 25,000/-                 | English               |
| 5.  | Bachelor/B.Sc. in Medical Imaging Technology                             | BMIT       | 10+2 or its equivalent with science subjects (Physics, Chemistry, Biology) with minimum 45% marks   | 17 Year  | 4                     | 6    | 25,000/-                 | English               |
| 6.  | Bachelor/B.Sc. in Anaesthesia & Critical Care Technology                 | BACT       | 10+2 or its equivalent with science subjects (Physics, Chemistry, Biology) with minimum 45% marks   | 17 Year  | 4                     | 6    | 20,000/-                 | English               |
| All the above Bachelor Degrees are full time face to face programmes. |  |            |   |  |                       |      |                          |                       |

| S. No. | Name of the Programme | Prog. Code | Eligibility | Min. age as on 1 <sup>st</sup> July of the academic year | Duration in the years |      | Programme Fee (per year) | Medium of instruction |
|--------|-----------------------|------------|-------------|--|-----------------------|------|--------------------------|-----------------------|
|        |                       |            |             |  | Min.                  | Max. |                          |                       |

### DIPLOMA PROGRAMMES

|    |  |      |   |         |   |   |          |         |
|----|--|------|---|---------|---|---|----------|---------|
| 7. | Diploma in Medical Laboratory Technology | DMLT | 10+2 or its equivalent with science subjects (Physics, Chemistry, Biology) with minimum 45% marks<br>Or<br>10+2 with Medical Laboratory Technology (Vocational) | 17 Year | 2 | 4 | 25,000/- | English |
| 8. | Diploma in Optometry                     | DOPT | 10+2 or its equivalent with science subjects (Physics, Chemistry, Biology) with minimum 45% marks   | 17 Year | 2 | 4 | 25,000/- | English |
| 9. | Diploma in Radio Imaging Technology      | DRIT | 10+2 or its equivalent with science subject (Physics, Chemistry, Biology) with minimum 45% marks  | 17 Year | 2 | 4 | 25,000/- | English |

All the above Diplomas are full time face to face programmes.

### ONLINE PG CERTIFICATE PROGRAMMES

|     |   |       |   |        |          |        |          |         |
|-----|---|-------|---|--------|----------|--------|----------|---------|
| 10. | Post Graduate Certificate in Health Insurance                 | PGCHI | Bachelor's Degree in any discipline from any recognized University/Institutions | No bar | 6 months | 2 year | 10,000/- | English |
| 11. | Post Graduate Certificate in Medical Informatics              | PGCMI | Bachelor's Degree in any discipline from any recognized University/Institutions | No bar | 6 months | 2 year | 10,000/- | English |
| 12. | Post Graduate Certificate in Medical Laws                     | PGCML | Bachelor's Degree in any discipline from any recognized University/Institutions | No bar | 6 months | 2 year | 10,000/- | English |
| 13. | Post Graduate Certificate in Quality Management in Healthcare | PGCQM | Bachelor's Degree in any discipline from any recognized University/Institutions | No bar | 6 months | 2 year | 10,000/- | English |

Post Graduate Certificate Programmes will be offered through online mode only.

## 5. BACHELOR'S DEGREE PROGRAMMES

### 5.1 Bachelor / B.Sc. in Medical Laboratory Technology (BMLT)

The objective of this programme is to develop manpower for health sector by providing them the necessary knowledge and skill to ensure the quality services in the remote areas of our country. This is an innovative, need-based and relevant training programme meant to create employment opportunities.

Medical Laboratory Technology is a basic and important tool in the diagnosis/study of the various diseases for appropriate monitoring and treatment. The knowledge in the field of Hematology, Microbiology, Bio-chemistry, General Pathology, etc. is of utmost important for any skilled technician. Therefore, in the rapidly growing area of scientific knowledge and skills, laboratory science is an important area of study for Medical Laboratory Technicians.

**Eligibility** : 10+2 or its equivalent with science subject (Physics, Chemistry, Biology) with minimum 45% marks  
Or  
10+2 with Medical Laboratory Technology (Vocational background) with minimum 45% marks

**Duration** : **Minimum** 4 years  
**Maximum** 6 years

**Fee Structure** : 25,000/- per annum

#### Objectives

This programmes aims at providing comprehensive knowledge of structure, function and pathological changes of the organs, the basis for understanding the clinical correlation of diseases and the pathological basis for the disease presentation.

After going through this programme the students shall be able to:

- comprehend the normal disposition, clinically relevant interrelationship, functional anatomy and physiological process in the body in relation to pathological basis for the diseases.
- Identify the microscopic structure and correlate the findings with the diseases of the various structures of organs and tissues of the body.
- Correlate the structure with illustrations as a requisite for understanding the altered state in various, disease processes specially with respect to pathology and microbial infections and infestations.

| Programme Structure  |  |
|----------------------|--|
| Year                 | Course Name  |
| 1 <sup>st</sup> Year | Basics of Laboratory Equipment and Basic Chemistry |
|                      | Basic Haematology                                  |
|                      | Blood Banking and Immuno Haematology               |
|                      | Clinical Pathology (Body Fluids) and Parasitology  |
| 2 <sup>nd</sup> Year | Clinical Biochemistry                              |
|                      | Micro-Biology                                      |
|                      | Immunology   |
|                      | Histopathology and Cytology                        |
| 3 <sup>rd</sup> Year | Applied Histopathology and Cytology                |
|                      | Applied Haematology                                |
|                      | Applied Serology and Immunology                    |
|                      | Organization and Management                        |
| 4 <sup>th</sup> Year | Automation of Laboratory Services                  |
|                      | Internship/dissertation                            |



## 5.2 Bachelor/B.Sc. in Medical Record Science & Health Information Technology (BMRHIT)

The Medical Record Departments/Services, in any model Health Care Facility, play a key role in the development and maintenance of good that is complete, adequate and accurate medical records of In-patients, Out-patients (including emergency patients).

Such medical records are essentially required to render prompt help to patients and physicians in providing continuity of medical care; managing diagnostic, therapeutic and rehabilitative measures; developing hospital and patient care data for purposes of educational and research programs. Statistical data generated from the medical records is utilized as an important tool by the health authorities of a country for the organization and management of any health care facility with a view to cater to the needs of the community by providing preventive, curative and health promotion measures. Development of a reliable and dependable health information system based on well-written medical records, which is the need of the hour, requires knowledge of the contents of medical records; Statistical techniques for the analysis and compilation of data on morbidity and mortality and understanding of medico-legal aspects of medical records as well as the current statutory laws relating to health care field. This is obtainable by organizing a suitable medical record and health information management educational programme, which could meet the requirement of well qualified Medical Record Professionals, particularly at the managerial level. The course on Medical Record Science and Health Information Technology is designed for these purposes with particular emphasis on achievement of the below given objectives.

**Eligibility** : 10+2 or its equivalent with minimum 45% marks (science student will be given preference).

**Duration** : **Minimum** 3 years  
**Maximum** 5 years

**Fee Structure** : 20,000/- per annum

### Objectives

B.Sc. in medical record and health information technology is designed to prepare the student for a career as a medical record professional. After going through this programme the student will be able to:

| Programme Structure  |   |
|----------------------|---|
| Year                 | Course Name   |
| 1 <sup>st</sup> Year | Communicative English   |
|                      | Computer Skills-I   |
|                      | Basic Human Sciences (Anatomy, Physiology, General Pathology, Microbiology, Biochemistry and Pharmacology)  |
|                      | Medical Record Science  |
|                      | Medical Terminology – I   |
| 2 <sup>nd</sup> Year | Medical Terminology – II  |
|                      | Introduction to Management; Organization and Management of Hospitals and Health System Management.          |
|                      | International Classification of Diseases (ICD – 10) & Surgical & Non-Surgical Procedures (ICD – 9)          |
|                      | General Statistics, Bio-Statistics and Hospital Statistics  |
| 3 <sup>rd</sup> Year | Basics of Preventive/Social/Community Medicine and Curative Medicine  |
|                      | Medical Ethics and Medical Jurisprudence & Toxicology (Including all the Laws related to Health & Hospital) |
|                      | Computer Skills – II  |
|                      | Project work  |

- understand the functions of medical record professionals in providing health information in a hospital.
- develop the skills necessary to fulfill these functions by acquiring a basic knowledge of medical terminology, anatomy and physiology, laboratory sciences, hospital statistics etc.
- become proficient in maintaining medical records on par with the current standards.
- understand the legal aspects of medical records, such as the legal requirements about maintenance and retention of records and release of clinical information.
- develop the expertise in compiling hospital and patient care statistics particularly morbidity & mortality data ( W.H.O. I.C.D. based).
- develop an understanding of the functions performed by the other departments in a hospital which directly contribute to patient care.
- understand about the principles of management; their application in the administration of a medical record department.
- promote an appreciation of the ethical principles underlying medical practice in general and the code of ethics of medical record professionals in particular.

### 5.3 Bachelor / B.Sc. in Optometry and Ophthalmic Techniques/ Technology (BSCHOT)

B.Sc. in Optometry and Ophthalmic Techniques/ Technology (BSCHOT) aimed to develop a multipurpose ophthalmic manpower in the country. The students can employ themselves in Specialized Eye Hospitals, Optical Outlets, Practice Independently and Dispense Glasses, Contact Lenses and Low Vision Aids.

**Eligibility** : 10+2 or its equivalent with science subject (Physics, Chemistry, Biology) with minimum 45% marks

**Duration** : **Minimum** 4 years  
**Maximum** 6 years

**Fee Structure** : 23,800/- Per annum

#### Objectives

The programme is being launched with broad objective of training the students in various ophthalmic techniques. After going through this programme the students shall be able to:

- assist eye specialists in big eye hospitals, eye care health units, etc. as refractionists, orthoptists, theatre assistants and refractionists.

| Programme Structure  |                              |
|----------------------|------------------------------|
| Year                 | Course Name                  |
| 1 <sup>st</sup> Year | Communicative English        |
|                      | Computer Skills              |
|                      | Basic Human Science          |
|                      | Basic Ocular Science         |
|                      | Optometry Practice           |
| 2 <sup>nd</sup> Year | Visual Optics                |
|                      | Dispensing Optics            |
|                      | Orthoptics                   |
|                      | Ocular Diseases              |
| 3 <sup>rd</sup> Year | Contact Lenses               |
|                      | Low Vision Aids              |
|                      | Applied Optometry            |
|                      | Community Optometry          |
| 4 <sup>th</sup> Year | Occupational Optometry       |
|                      | Operation Theater Assistance |
|                      | Project work                 |

- get themselves self employed as opticians, optometrists and refractionists estimate errors of refraction and be able to prescribe glasses
- perform accurate refraction and prescribe visual aids.
- assess ocular motility disorders and prescribe adequate treatment including eyeball exercises.

## 5.4 Bachelor / B.Sc. in Radiation Therapy Technology (BRTT)

Radiation therapy is the medical use of ionizing radiation as part of cancer treatment to control neoplastic cells. Radiotherapy may be used for curative or adjuvant cancer treatment. It is used as palliative/therapeutic treatment. Radiotherapy has several applications in non-malignant conditions, such as the treatment of Trigeminal neuralgia, severe eye diseases, pterygium, pigmented villonodular synovitis, prevention of keloid scar growth, and prevention of heterotopic ossification, thyroid and other diseases. The use of radiotherapy in non-malignant conditions is limited partly due to risk of radiation-induced cancers.

**Eligibility** : 10+2 or its equivalent with science subject (Physics, Chemistry, Biology) with minimum 45% marks

**Duration** : **Minimum** 4 years  
**Maximum** 6 years

**Fee Structure** : 25,000/- Per annum

### Objectives

**After going through this programme the student should be able to:**

- develop and apply professional ethics and characteristics of a Radiation Therapist.
- demonstrate abilities in communication, critical thinking and problem solving necessary for professional practice.
- able to manage, evaluate and use scientific, technological information as it applies to the patient care services.

| Programme Structure  |  |
|----------------------|--|
| Year                 | Course Name                                      |
| 1 <sup>st</sup> Year | Communicative English                            |
|                      | Computer Skills                                  |
|                      | Basic Human Science                              |
|                      | Basic Clinical Oncology                          |
|                      | Radiographic Imaging                             |
|                      | Basics of Radiological Physics.                  |
| 2 <sup>nd</sup> Year | Radiotherapy Equipment                           |
|                      | Radiotherapy Physics                             |
|                      | Hospital practice & Care of patient              |
|                      | Clinical Oncology – Site Specific                |
|                      | Radiotherapy Process I & Conventional Techniques |
| 3 <sup>rd</sup> Year | Advanced Radiotherapy Equipment                  |
|                      | Radiotherapy Process II & Advanced Techniques    |
|                      | Radiobiology & Radiation Protection              |
|                      | Administration & Management                      |
| 4 <sup>th</sup> Year | Basics of Research Methodology & Biostatistics   |
|                      | Teaching methods                                 |
|                      | Internship/dissertation                          |

## 5.5 Bachelor/B.Sc. in Medical Imaging Technology (BMIT)

The Bachelor of Science in Medical Imaging Technology upgrade students with a combination of classroom and clinical experiences using recent trends and the latest technology. The medical imaging technology in Radiologic science is to develop skilled radiographer, qualified to provide

patient care services in intervention procedures, computed tomography, ultrasonography, and magnetic resonance imaging. In the course of study, medical imaging technologists use principles of radiation protection as they determine exposure factors and position of patient for a variety of examinations in various procedures. They can also assist during surgical procedures performed during an examination, assessing the technical quality of the images and providing basic patient care. Medical imaging technologists function as members of the health care team, performing diagnostic imaging procedures in hospitals, clinics, and other health care settings.

**Eligibility** : 10+2 or its equivalent with science subject (Physics, Chemistry, Biology) with minimum 45% marks

**Duration** : **Minimum** 4 years  
**Maximum** 6 years

**Fee Structure** : 25,000/- Per annum

### Objectives

After going through this programme the student should be able to:

- understand various imaging technology including X-rays of human body, basic training of MRI, CT Scanning ect.
- learn various diagnostic tool and equipments of X-rays, CT scan, MRI, Ultrasound, PET scan and various tools and equipments used in nuclear medicine.
- learn basic of various modalities of imaging technology under guidance of radiologist/ radiotherapist for the preparation of the patient for requisite procedure.
- assist all invasive/non-invasive radiological procedures and imaging technology.

| Programme Structure  |   |
|----------------------|---|
| Year                 | Course Name   |
| 1 <sup>st</sup> Year | Communicative English                                   |
|                      | Computer Skills   |
|                      | Basic Human Science                                     |
|                      | Radiographic Imaging                                    |
|                      | Basics of Radiological Physics.                         |
| 2 <sup>nd</sup> Year | Basic Physics of Radiological Equipment-I               |
|                      | Hospital practice & Care of patient                     |
|                      | Radiographic Technique for Routine Procedures           |
|                      | Care of Patients for Radio Diagnostic Procedures        |
| 3 <sup>rd</sup> Year | Radiographic Technique for Special Procedures           |
|                      | Advance Physics of Radiological Equipment-II            |
|                      | Quality Assurance and Radiation Protection in Radiology |
|                      | Administration & Management                             |
| 4 <sup>th</sup> Year | Basics of Research Methodology & Biostatistics          |
|                      | Teaching methods  |
|                      | Internship/dissertation                                 |

## 5.6 Bachelor / B.Sc. in Anaesthesia & Critical Care Technology (BACT)

Anaesthesia and Critical Care Technology is an upcoming paramedical discipline. With increasing complexity in Anaesthesia. There is extreme paucity of the skilled assistance in this country and there are very few institutions and hospitals undertaking recognized course to train and develop skilled assistance for wider use. The aim of this programme is to train personnel to develop competent assistants to Anaesthesiologist. The course provides intensive theoretical and practical training with objectives mentioned below.

**Eligibility** : 10+2 or its equivalent with science subject (Physics, Chemistry, Biology) with minimum 45% marks

**Duration** : **Minimum** 4 years  
**Maximum** 6 years

**Fee Structure** : 20,000/- per annum

### Objectives

After going through this programme the student should be able to:

- in assisting the anesthetists in setting up the various requirements in the type of Anaesthesiology – local, regional or general.
- have the emergency crash cart set-up available, prepared and maintained all the time.
- maintain, troubleshoot and be prepared with the anesthesia machine all the time.
- understand the pharmacology of various drugs used in anesthesia including their side effects, toxicity, doses of administration, proper administration and proper utilization.
- know enough about infection control and self protection.
- care for the anaesthetized, unconscious, recovering patient and pickup warning signals clinically by observing the monitors and alert the Physician/ surgeon.
- provide ongoing care during the recovery phase at the recovery room from the technological point of view.
- know enough about ventilator management, setting, maintaining and weaning processes.
- interpret pulse oxymeter readings, perform blood gas analysis and interpret the same for consultation of experts.
- know all principles of safety of patients at every stage during transportation and in various positions.
- provide airway ventilation and cardio pulmonary resuscitation when necessary.

| Programme Structure  |  |
|----------------------|--|
| Year                 | Course Name  |
| 1 <sup>st</sup> Year | Communicative English                              |
|                      | Fundamentals of computers                          |
|                      | Basic Human Sciences                               |
|                      | Essential of Clinical Medicine                     |
|                      | Anaesthesia Equipment                              |
| 2 <sup>nd</sup> Year | Essential of Anaesthesiology                       |
|                      | ICU Management                                     |
|                      | CPR & Trauma Life Support                          |
|                      | Equipment care & Maintenance                       |
| 3 <sup>rd</sup> Year | Regional Anaesthesia                               |
|                      | Anaesthesia in Surgical Specialties                |
|                      | Anaesthesia Surgical Super Specialties             |
|                      | Pain palliative Care                               |
| 4 <sup>th</sup> Year | Critical Care Technology                           |
|                      | Biomedical Engineering (OT & Anaesthesia practice) |
|                      | Internship/project work                            |

## 6. DIPLOMA PROGRAMMES

### 6.1 Diploma in Medical Laboratory Technology (DMLT)

The objectives of this programme and general information refer Bachelor/B.Sc. in Medical Laboratory Technology Programme. The main subjects to be covered during the first and second year of this course are the same as for the Degree Course. Within completion of two years of the aforesaid course the candidate after undergoing requisite course module, diploma will be awarded and also have an

option to continue if desired, the degree course, within the requisite time schedule as mentioned in the degree course.

The Medical Laboratory Technology field has been a tool in the diagnosis and study of the various diseases for proper treatment. The knowledge in the field of Hematology, Microbiology, Bio-chemistry and General Pathology is of utmost important for any skilled technician. And therefore, in the rapidly growing area of scientific knowledge and skills, laboratory science is an important area of study for Medical Laboratory Technicians. The Laboratory Technology is a basic important and growing science in the health sector. As there is no council to accredit this training programme, there are number of training centres mushrooming everyday without any standard is a great threat to human beings. When improperly trained personnel's can not provide quality services and ultimately the society suffer without proper diagnostic inputs.

**Eligibility** : 10+2 or its equivalent with science subject (Physics, Chemistry, Biology) with minimum 45% marks  
Or  
10+2 with Medical Laboratory Technology (Vocational background) with minimum 45% marks

**Duration** : **Minimum** 2 years  
**Maximum** 4 years  
(6 month internship training programme)\*  
  
\* for those who will continue the bachelor degree course as mentioned in the syllabus of aforesaid course.

**Fee Structure** : 25,000/- per annum

## Objectives

After going through this programme the students shall be able to:-

- comprehend the normal disposition, clinically relevant interrelationship, functional anatomy and physiological process in the body in relation to pathological basis for the diseases.
- Identify the microscopic structure and correlate the findings with the diseases of the various structures of organs and tissues of the body.
- Correlate the structure with illustrations as a requisite for understanding the altered state in various, disease processes specially with respect to pathology and microbial infections and infestations.

## 6.2 Diploma in Optometry (DOPT)

Diploma in Optometry (DOPT) is a two-year programme started with the objective of producing trained ophthalmic personnel for rendering eye care services to the masses. The incidence of preventable

| Programme Structure  |   |
|----------------------|---|
| Year                 | Course Name                                       |
| 1 <sup>st</sup> Year | Basic of Laboratory Equipment and Basic Chemistry |
|                      | Basic Haematology                                 |
|                      | Blood Banking and Immuno Haematology              |
|                      | Clinical Pathology (Body Fluids) and Parasitology |
| 2 <sup>nd</sup> Year | Clinical Biochemistry                             |
|                      | Micro-Biology                                     |
|                      | Immunology  |
|                      | Histopathology and Cytology                       |



blindness in India is ever increasing due to non-availability of qualified eye care professionals. The qualified personnel can work with vision care hospital as a part of team with ophthalmologists and optometrist and contribute towards prevention of blindness.

**Eligibility** : 10+2 or its equivalent with science subject (Physics, Chemistry, Biology) with minimum 45% marks

**Duration** : **Minimum** 2 years  
**Maximum** 4 years

**Fee Structure** : 25,000/- Per annum

| Programme Structure  |                           |
|----------------------|---------------------------|
| Year                 | Course Name               |
| 1 <sup>st</sup> Year | Basic Human Sciences      |
|                      | Basic Ocular Sciences     |
|                      | Optometry Practices       |
|                      | Ophthalmic Investigations |
| 2 <sup>nd</sup> Year | Visual Optics             |
|                      | Dispensing Optics         |
|                      | Community Ophthalmology   |
|                      | Applied Optometry         |

### Objectives

The programme is being launched with broad objective of training the students in various ophthalmic techniques. After going through this programme the students shall be able to:

- assist eye specialists in specialized eye hospitals eye care centres as refractionists and theatre assistant.
- Perform eye examination and investigation pertaining to eye.
- maintain ophthalmic appliances and instruments
- assess ocular motility disorders and prescribe adequate treatment including eyeball exercises.

## 6.3 Diploma in Radio Imaging Technology (DRIT)

The objective of this diploma course is to create qualified technical staff acquiring prescribed techniques in the radio imaging technology which constitutes the routine screening procedures of Radio Imaging such as X-ray Technology, Ultrasound Technology, CT-Scanning and MRI. The basic principles on hand training and demonstration of techniques will be acquired with associated, Hospitals, Recognized and Registered with IGNOU, University.

**Eligibility** : 10+2 or its equivalent with science subject (Physics, Chemistry, Biology) with minimum 45% marks

**Duration** : **Minimum** 2 years  
**Maximum** 4 years

**Fee Structure** : 25,000/- per annum

| Programme Structure  |   |
|----------------------|---|
| Year                 | Course Name   |
| 1 <sup>st</sup> Year | Communicative English                                   |
|                      | Fundamentals of computers                               |
|                      | Basic Human Sciences                                    |
|                      | Basics of Radiological Physics                          |
|                      | Radiographic Imaging                                    |
| 2 <sup>nd</sup> Year | Basic Physics of Radiological Equipment                 |
|                      | Radiographic Technique for Routine Procedures           |
|                      | Care of Patients for Radiodiagnostic Procedures         |
|                      | Quality Assurance and Radiation Protection in Radiology |

## Objectives

After going through this programme the students shall be able to:

- learn practical experience in the field of X-rays of the human body.
- Learn basic training in MRI and CT scanning.
- Understand fundamentals of the subjects including Radiation Physics, relevant general Physics, Equipment Physics, Radiographic Photography, Anatomy, Physiology.
- Learn practical technology and to educate in all Radiographic Techniques & Positioning.
- Educate and practice Record keeping and quality assurance.

## 7. ONLINE POST GRADUATE CERTIFICATE PROGRAMMES

### 7.1 Online Post Graduate Certificate in Health Insurance (PGCHI)

Health Insurance is a system of assurance to meet the contingencies of health care expenses. The primary objective of Health Insurance is to provide protection against financial losses caused by unforeseen health problems and at the same time relieving anxiety and mental tension. Hence it can be appropriately called as Health care Insurance and required many professionals to meet huge demand of the insurance sector.

|                      |   |   |
|----------------------|---|---|
| <b>Eligibility</b>   | : | Bachelor's Degree in any discipline from any recognized University/Institutions |
| <b>Duration</b>      | : | Minimum 6 Months and maximum 2 years  |
| <b>Fee Structure</b> | : | 10,000/-  |

### 7.2 Online Post Graduate Certificate in Medical Informatics (PGCMI)

Medical Informatics is the intersection of information science, computer science, and health care. It deals with the resources, devices, and methods required optimizing the acquisition, storage, retrieval, and use of information in health and biomedicine. Health informatics tools include not only computers but also clinical guidelines, formal medical terminologies, and information and communication systems.

|                      |   |   |
|----------------------|---|---|
| <b>Eligibility</b>   | : | Bachelor's Degree in any discipline from any recognized University/Institutions |
| <b>Duration</b>      | : | Minimum 6 Months and maximum 2 years  |
| <b>Fee Structure</b> | : | 10,000/-  |

### 7.3 Online Post Graduate Certificate in Medical Laws (PGCML)

Medical law concerns the rights and duties of the medical profession and the rights of the patient. Three main areas within medical law are the law on confidentiality, negligence and other torts in relation to medical treatment and the criminal law in relation to medical practice and treatment. There are also a range of issues concerning ethics and medical practice which are increasingly coming before the courts.

|                      |   |
|----------------------|---|
| <b>Eligibility</b>   | : Bachelor's Degree in any discipline from any recognized University/Institutions |
| <b>Duration</b>      | : Minimum 6 Months and maximum 2 years  |
| <b>Fee Structure</b> | : 10,000/-  |

## 7.4 Online Post Graduate Certificate in Quality Management in Healthcare (PGCQM)

The advanced specialty certificate in bill prepares managers and health care professionals to plan, develop and implement successful continuous quality improvement/management programs in their organizations and health care regions. Graduates will enhance their health organizations ability to move into integrated delivery of quality health care services that are accountable to clients of the system, the government and the public.

|                      |   |
|----------------------|---|
| <b>Eligibility</b>   | : Bachelor's Degree in any discipline from any recognized University/Institutions |
| <b>Duration</b>      | : Minimum 6 Months and maximum 2 years  |
| <b>Fee Structure</b> | : 10,000/-  |

## 8. HOW TO APPLY

The Student Handbook and Prospectus can be obtained in person from the sale counter of University (Student Registration Division, Block 3, Room No. 1, IGNOU, Maidan Garhi, New Delhi – 110068) and from all Regional Centres and Study Centres on payment of Rs. 100/-

The Student Handbook & Prospectus can also be obtained by post from Registrar (SRD), IGNOU, Maidan Garhi, New Delhi – 110068 by sending a demand draft of Rs. 150/- in favour of IGNOU, payable at New Delhi. Student Handbook & Prospectus will be sent to such applicants.

The Student Handbook & Prospectus can also be downloaded from University website [www.ignou.ac.in](http://www.ignou.ac.in). The candidates downloading the Form from website are required to send their application to Centre for Paramedical Sciences, IGNOU, Maidan Garhi, New Delhi – 110068 along with a Demand Draft of Rs. 200/- (Rupees two hundred only) drawn in favour of IGNOU, payable at New Delhi.(i.e. Rs100/- for Prospectus plus Rs100/- for Registration)

## 9. MEDIUM OF INSTRUCTION

English

## 10. COMMENCEMENT OF THE COURSE

The Academic year for the Degree/Diploma Course shall commence from July of the year.

## 11. AGE

Minimum age 17 year as on 1<sup>st</sup> July 2010

- Note:
1. All the above Bachelor Degree & Diploma Programmes are full time face-to-face programmes.
  2. Post Graduate Certificate Programmes will be offered through online mode only.

## 12. UNIVERSITY RULES

**The University reserves the right to change the rules from time to time. However, latest rules will be applicable to all the students irrespective of the year of registration.**

### 12.1 Educational Qualifications Awarded by Private Institutions

Any educational qualification awarded by the Private Universities established under the provisions of the “*Chhattisgarh Niji Kshetra Vishwavidyalaya (Sathapane Aur Viniyaman), Adhiniyam, 2002*” are non-existent and cannot be made the basis of admission to higher studies with IGNOU.

### 12.2 Incomplete and Late Applications

Incomplete application forms/Re-registration forms, received after due date or having wrong options of courses or electives or false information, will be summarily rejected without any intimation to the learners. The learners are, therefore, advised to fill the relevant columns carefully and enclose the copies of all the required certificates duly attested by a Gazetted Officer. **The form is to be submitted to the Regional Director concerned ONLY on or before the due date.** The application form sent to other offices of the University will not be considered and the applicant will have no claim whatsoever on account of this.

### 12.3 Validity of Admission

Learners offered admission have to join on or before the due dates specified by the University. In case they want to seek admission for the next session, they have to apply afresh and go through the admission process again.

All other schedules viz. the submission of Examination Form, assignments and dates for examinations will remain as notified by the University from time to time.

### 12.4 Simultaneous Registration

Students who are already enrolled in a programme of one year or longer duration can also simultaneously register themselves for any certificate programme of 6 months duration. However, if there is any clash of dates of counselling or examination schedule between the two programmes taken, University will not be in a position to make adjustment.

### 12.5 Re-Registration

Learners are advised to **submit the Re-Registration forms only at the respective Regional Centre and nowhere else.** If any student sends the Registration/Re-Registration forms to wrong places and thereby misses the scheduled date and consequently a semester/year, he/she will have no claim on the University for regularisation.

#### Schedule for Re-Registration

|    | For July Session           | For January Session           | Late fee |
|----|----------------------------|-------------------------------|----------|
| 1. | 1st February to 31st March | 1st August to 1st October     | NIL      |
| 2  | 1st April to 30th April    | 1st October to 31st October   | 200.00   |
| 3  | 1st May to 31st May        | 1st November to 30th November | 500.00   |
| 4  | 1st June to 20th June      | 1st December to 20th December | 1000.00  |

## 12.6 Re-admission

The students who are not able to clear their programme within the maximum duration can take re-admission for additional period in continuation of the earlier period as under:

| Programmes                   | Duration | Re-admission Period |
|------------------------------|----------|---------------------|
| Certificates Programmes      | 6 Months | 6 months            |
| Diploma Programmes           | 1 Year   | 1 year              |
| Bachelor's Degree Programmes | 3 Years  | 2 years             |
| Master's Degree Programmes   | 2 Years  | 2 years             |

For re-admission the student has to make pro-rata fee for each incomplete course. The details of pro-rata fee and the Re-admission Form is available at the Regional Centres and also in the Website for the courses which they have not been able to complete. For further details, please see the website.

The students who fail to pay the prescribed full programme fee during the maximum duration of the Programmes shall have to pay full fee for the missed years in addition to pro-rata course fee for re-admission.

## 12.7 Reservation

The University provides reservation of seats for Scheduled Castes, Scheduled Tribes, non-creamy layer of OBC, War Widows, Kashmiri Migrants and Physically Handicapped learners, as per the Government of India rules, for admission to its various programmes.

## 12.8 Scholarships and Reimbursement of Fee

The learners belonging to reserved Categories, viz. Scheduled Castes, Scheduled Tribes and Physically Handicapped have to pay the full fee at the time of admission to the University along with other general category candidates. SC/ST learners have to collect and subsequently submit their scholarship forms to the respective State's Directorate of Social Welfare or Office of the Social Welfare Officer, through the concerned Regional Director of IGNOU for reimbursement of programme fee. Similarly, Physically Handicapped learners admitted to IGNOU Programmes are eligible for Government of India scholarships. They are advised to collect scholarship forms from the respective State Government Directorate of Social Welfare or Office of the Social Welfare Officer and submit the filled-in forms to them through the concerned Regional Director of IGNOU. Scholarship scheme of National Centre for Promotion of Employment of Disabled People (NCPEDP) for Post Graduate level programmes is applicable to the students of this University also. Such students are advised to apply to awarding authority.

## 12.9 Refund of Fee

Fee once paid will not be refunded under any circumstances. It is also not adjustable against any other programme of this University. However, in cases where University denies admission, the programme fee will be refunded after deduction of registration fee **through A/c Payee Cheque Only** by concerned Regional Centre.

## 12.10 Study Material and Assignments

The University sends study materials and assignments wherever prescribed to the students by registered post and if a student does not receive the same for any reason whatsoever, the University shall not be held responsible for that. **In case a student wants to have assignments, he can obtain a copy of**

**the same from the Study Centre or Regional Centre or may download it from the IGNOU website: [www.ignou.ac.in](http://www.ignou.ac.in).** In case of non-receipt of study material students are required to write to concerned Regional Centre, IGNOU.

### 12.11 Counselling and Examination Centre

All study centres, Programme study centres, special study centres are not Examination centres. Practical Examination need not necessarily be held at the centre where the learner has undergone counselling or practicals. Regular counselling sessions will be conducted at the learner support centres provided the number of learners for a particular course is equal to or more than 10. If the number is less than 10 then in place of regular counselling, intensive counselling sessions will be held which essentially means that 40% of the number of prescribed counselling sessions are to be conducted within a week's time.

### 12.12 Change/Correction of Address

There is a printed card for change/correction of address and change of Study Centre which is dispatched along with the study material. In case there is any correction/change in the address, the learners are advised to make use of Performa provided in the Programme Guide and send it to the Regional Director concerned who will forward the request after verifying the student's signature to SR Division, Maidan Garhi, New Delhi - 110068. **Requests received directly at SED, New Delhi will not be entertained. The form of change of address can also be downloaded from IGNOU Website [www.ignou.ac.in](http://www.ignou.ac.in).** Learners are advised not to write letters to any other officer in the University in this regard. Normally, it takes 4-6 weeks to affect the change. Therefore, the learners are advised to make their own arrangements to redirect the mail to the changed address during this period.

### 12.13 Change of Region/Study Centre

When a student wants transfer from one region/study centre to another region/study centre, he/she has to write to that effect to the Regional Centre from where he/she is seeking transfer with copies addressed to the Regional Centre where he/she would like be transferred to. Further, he/she has to obtain a certificate from the Coordinator of the Programme Study Centre from where he/she is seeking transfer regarding the number of assignments submitted. This is necessary, since Project work has to be completed at the Programme Study Centre, 'No Objection Certificate' is to be obtained from the concerned Regional Centre/ Programme Study Centre from where the student seeks transfer. The Regional Director from where the student is seeking the transfer, will transfer all the relevant records including details of fee payment, to the new Regional Centre under intimation to the Registrar, SE Division and the concerned student as well. Change of Programme Study Centre is not permitted until admissions are finalized. In case any student is keen for transfer from Army/Navy/Air Force Regional Centre to any other Regional Centre of the University during the cycle/session, he/she would have to pay the fee-share money to the Regional Centre. In case the learner seeks transfer at the beginning of the session/cycle the required programme course fee for the session/cycle shall be deposited at the Regional Centre. However, the transfer shall be subject to availability of seats wherever applicable.

### 12.14 Term-end Examination

The University conducts elimination twice a year in the month of **June and December** every year. Student after completing the minimum duration of the programme may appear in term-end examination after submitting the examination form within the prescribed date fulfilling the other eligibility conditions.



## 12.15 Official Transcripts

The University provides the facility of official transcripts on request made by the learners on plain paper addressed to Registrar (SED), IGNOU, Maidan Garhi, New Delhi–110 068. A fee of Rs.200/- per transcript payable through DD in favour of IGNOU is charged for this purpose. The students are required to pay Rs.400/- in case of request for sending transcript outside India.

## 12.16 Disputes on Admission and Other University Matters

The place of jurisdiction of filing of suit, if necessary, will be only New Delhi/Delhi.

## 12.17 Recognition

IGNOU Degrees/Diplomas/Certificates are recognized by all member Universities of Association of India Universities (AIU) and are at par with Degrees/Diplomas/Certificates of all Indian Universities/Institutions, as per UGC Circular letter no. F.1-52/2000(CPP-II) dated 5th May, 2004, AIU Circular No. EV/11(449/94/176915-177115 dated January 14, 1994 & AICTE Circular No. AICTE/Academic/MOU-DEC/2005 dated May 13, 2005. (See Annexure-I, II & III)

## PREVENTION OF MALPRACTICE/NOTICE FOR GENERAL PUBLIC

Students seeking admission to various academic programmes of Indira Gandhi National Open University are advised to directly contact IGNOU headquarters at New Delhi or Regional Centres of IGNOU or Programme Study Centres only. Students interacting with intermediaries shall do so at their own risk and cost. However, in case of any specific complaint regarding fraudulent institutions, fleecing students etc., please contact any of the following members of the Malpractices Prevention Committee:

- |                                       |                   |
|---------------------------------------|-------------------|
| 1. Prof. Manohar Lal, Director, SOCIS | (Tele: 2953 3426) |
| 2. Registrar/OSD, SRD                 | (Tele: 2953 2741) |
| 3. Registrar, SED                     | (Tele: 2953 5828) |
| 4. Director, RSD                      | (Tele: 2953 2118) |
| 5. Director, SSC                      | (Tele: 2953 5714) |
| 6. CPRO                               | (Tele: 2953 2321) |
| 7. Security Officer                   | (Tele: 2953 3237) |
| 8. Deputy Registrar, SRD              | (Tele: 2953 6215) |

Alternatively complaints may be faxed on 29536588 or 29532312.

**E-mail:** [ignouregistrar@hotmail.com](mailto:ignouregistrar@hotmail.com)

**Website:** <http://www.ignou.ac.in>

**Note:** Except the above mentioned complaints, no other queries will be entertained at the above phone numbers. As per directions of Hon'ble Supreme Court of India ragging is prohibited. If any incident of ragging comes to the notice of the authority the concerned student shall be given liberty to explain and if his explanation is not found satisfactory, the authority would expel him from the University.

## 13. IGNOU POLICY REGARDING SEXUAL HARASSMENT AT THE WORKPLACE

In compliance with the guidelines of the Supreme Court, IGNOU has adopted a policy that aims to prevent/prohibit/punish sexual harassment of women at the workplace. Academic/non-academic staff and students of this University come under its purview.

Information on this policy, rules and procedures can be accessed on the IGNOU website ([www.ignou.ac.in](http://www.ignou.ac.in)). Incidents of sexual harassment may be reported to the Regional Director of the Regional Centre you are attached to or to any of the persons below:

### Apex Committee Against Sexual Harassment (ACASH)

|   |                             |
|---|-----------------------------|
| Prof. Parvin Sinclair<br>Chairperson & PVC                                      | pk Sinclair@ignou.ac.in     |
| Ms. Neena Jain<br>EMPC  | neenajain@ignou.ac.in       |
| <b>Regional Services Division Committee against Sexual Harassment (RSDCASH)</b> |                             |
| Dr. Neeta Kapai<br>Chairperson & Dy. Director, Campus Placement Cell            | nkapai@ignou.ac.in          |
| Dr. C. K. Ghosh<br>Director, SSC  | ckghosh@ignou.ac.in         |
| Ms. Kailash Saluja<br>AR, SOL   | kailashsaluja@ignou.ac.in   |
| Ms. Surekha<br>AR, Library  | sur.mittimani@gmail.com     |
| <b>IGNOU Committee against Sexual Harassment (ICASH)</b>                        |                             |
| Prof. Rita Rani Paliwal<br>Chairperson & Prof. of Hindi, SOH                    | rrpaliwal@hotmail.com       |
| Dr. Silima Nanda<br>Director, ID  | snanda@ignou.ac.in          |
| Dr. Himadri Roy<br>Reader, SOGDS  | himadriroy@ignou.ac.in      |
| Dr. Malti Mathur<br>Reader, SOH   | malatiroy@ignou.ac.in       |
| Ms. Vidya Sonal<br>DR. Admin Div.   | vsonal@ignou.ac.in          |
| Mr. K. K. Kutty<br>DR. SED  | kkkutty@ignou.ac.in         |
| Ms. Bharti Kharbanda<br>SO, SOCIS   | bhartikharbanda@ignou.ac.in |
| Ms. Sadhna Malhotra<br>AR, IGNOU  | sadhnamalhotra@ignou.ac.in  |
| Ms. Kanika Singh<br>RTA, SOCE   | kanikasingh@ignou.ac.in     |

## PRE ADMISSION ENQUIRY ON ACADEMIC PROGRAMME

If you have any queries on academic aspects of the programme, please mail at [enquiry@ignou.ac.in](mailto:enquiry@ignou.ac.in).

### WHOM TO CONTACT FOR WHAT

|    |  |   |
|----|--|---|
| 1. | Identity Card, Fee Receipt, Bonafide Certificate, Migration, Certificate, Scholarship Forms                          | Concerned Regional Centre   |
| 2. | Non-receipt of study material and assignments  | Concerned Programme Study Centre  |
| 3. | Schedule/Information regarding Exam-form, Entrance Test, Date-sheet, IGNOU, Hall Ticket                              | Assistant Registrar (Exam-II), SE Division, Block-12, Room No. 2, Maidan Garhi, New Delhi-110068<br>E-mail : <a href="mailto:sgoswami@ignou.ac.in">sgoswami@ignou.ac.in</a> or<br>Ph. : 29536743, 29535924-32 / Extn. : 2202, 2209  |
| 4. | Result, Re-evaluation, Grade Card, Deputy Registrar Provisional Certificate, Early Declaration of Result, Transcript | Deputy Registrar (Exam-III), SE Division, IGNOU, Block-12, Room No. 1, IGNOU, Maidan Garhi, New Delhi-110068<br><a href="mailto:kramesh@ignou.ac.in">kramesh@ignou.ac.in</a> or<br>Ph.: 29536103, 29535924-32/<br>Extn. : 2201, 2211, 1316  |
| 5. | Non-reflection of Assignment Grades/Marks  | Asstt. Registrar, (Assignment) SE Division Block-3, Room No. 12, IGNOU, Maidan Garhi, New Delhi-110068<br><a href="mailto:assignments@ignou.ac.in">assignments@ignou.ac.in</a> or <a href="mailto:ornjha@ignou.ac.in">ornjha@ignou.ac.in</a><br>Ph. : 29535924 / Extn. : 1312, 1319, 1325 |
| 6. | Original Degree/Diploma/Verification of Degree/Diploma   | Dy. Registrar (Ex-I), SED Block-9, IGNOU, Maidan Garhi New Delhi – 110068<br><a href="mailto:opbangia@ignou.ac.in">opbangia@ignou.ac.in</a> , <a href="mailto:convocation@ignou.ac.in">convocation@ignou.ac.in</a><br>Ph. : 29535438, 29535924-32 / Extn.: 2224, 2213                     |
| 7. | Student Grievances (SED)   | Asstt. Registrar (Student Grievance) SED, Block-3, Room No. 13, IGNOU Maidan Garhi, New Delhi-110068<br><a href="mailto:sregrievance@ignou.ac.in">sregrievance@ignou.ac.in</a><br>Ph. : 29532294, 29535924 / Extn. : 1313   |
| 8. | Purchase of Audio/Video Tapes  | Marketing Unit, EMPC, IGNOU, Maidan Garhi, New Delhi – 110068   |
| 9. | Student Support Services and pre-admission Inquiry of various courses in IGNOU                                       | Regional Director, Student Service Centre, IGNOU, Maidan Garhi, New Delhi – 110068<br><a href="mailto:ssc@ignou.ac.in">ssc@ignou.ac.in</a><br>Telephone Nos.: 29535714, 29533869, 2953380<br>Fax: 29533129  |

**IGNOU admissions are made strictly on the basis of merit. Only those learners who satisfy the eligibility criteria fixed by the University will be admitted. Learners will not be admitted if they are not eligible as per the eligibility criteria. Therefore, the candidates should not be misled by the false promises of admission made by any private individuals or institution.**

## LIST OF PROGRAMME STUDY CENTRES

## BACHELOR/B.Sc. IN MEDICAL LABORATORY TECHNOLOGY (BMLT)

| S.No. | Address   | Contact Person & Details   |
|-------|---|--|
| 1     | Amala Cancer Hospital & Research Centre, Amalanagar P.O., Trichur Dist. Kerala 680 555              | Fr. Paul Achandy<br>Ph:91-487-2304000<br>Email:frpaulak@hotmail.com<br>amalacan@md3.vsnl.net.in, Amalacan2@gmail.com           |
| 2     | Bangalore Baptist Hospital<br>Bellary Road, Hebbal<br>Bangalore – 24<br>Karnataka                   | Dr Alexander Thomas<br>Ph: 91-80-23330321-4 Fax: 23437970<br>E-mail: baptisthospital@dataone.in<br>Baptisthospital73@gmail.com |
| 3     | C.S.I. Hospital<br>Post Bag No. 4, H.K.P. Road<br>Bangalore – 560 051                               | Dr Helen P Samuel<br>Ph: 22861103<br>E-mail: info@csihospitalblr.org   |
| 4     | CSI Kalyani Multi Specialty Hospital<br>No. 15, Radhakrishnan Salai, Chennai,<br>Tamil Nadu 600 004 | Dr Rajkumari Sunder<br>Ph: 28475101, 28470642, 28473306,<br>28476433   |
| 5     | Jubilee Mission Hospital &<br>Medical College, Trichur<br>Kerala 680 005                            | Fr Francis<br>Ph: 0487-2432200, 2420361<br>E-mail: trc_jbmission@sancharnet.in   |
| 6     | Lisie Medical and Educational Institutions<br>Ernakulam, Kochi, Kerala 682 018                      | Fr Mathew Muttamthotty<br>Ph: 0484-2401102<br>E-mail: contact@lisiehospital.org  |
| 7     | Little Flower Institute of Medical<br>Sciences & Research (LIMSAR)<br>Angamaly, Kerala 683 572      | Dr J.K. Mukkadan<br>Ph: 0484-2452547 Extn. 322<br>Office: 2454846, 2452546, 2458327<br>E-mail: lfmrcang@satyam.net.in          |
| 8     | Muthoot Medical Centre (P) Ltd<br>Ring Road, Pathanamthitta<br>Kerala 689 645                       | Mr Mathew Philip<br>Ph: 0468-2324000,<br>E-mail: muthootmc@sify.com  |
| 9     | MOSC College of Allied<br>Health Sciences<br>Kolenchery, Ernakulam Dist.<br>Kerala - 682 311        | Dr Sojan Ipe<br>Ph: 0484-3055555, 2762960, 2760251<br>E-mail: mmmhn@moscmm.org   |
| 10    | Pushpagiri Medical Society<br>Pushpagiri Medical College Hospital<br>Tiruvalla, Kerala – 689 101    | Fr Thomas Kodinattumkunel<br>Ph: 0469-2700755, Fax: 2701045, 2701044<br>E-mail : pms@pushpagiri.in                             |

| S.No. | Address  | Contact Person & Details   |
|-------|--|--|
| 11    | Samaritan Hospital<br>Pazhanganad, Kizhakambalam,<br>Alwaye, Kerala 683 562  | Sr Parmalatha<br>Ph: (0484) 2680511-16<br>E-mail: total-care@eth.net   |
| 12    | San Joe Hospital<br>Perumbavoor, Ernakulam Dist<br>Kerala 683542   | Sr Mathias<br>Ph: (0484)-2522251, 2522252<br>Fax: 0484- 2590712  |
| 13    | Nirmala Hospital<br>Marikunnu, P.O. Calicut,<br>Kerala - 673012  | Sr. Sapna<br>Ph: (0495) – 2730220, 2730211, 2730720<br>e-mail: nirmalahospital@sancharnet.in   |
| 14    | St. Joseph's Hospital<br>Dharmagiri, Kothamangalam<br>Kerala 686 691   | Sr Josefa<br>School of MLT, Ph: 0485-2862391, 2862007,<br>2861133, 2862651,<br>E-mail: stjosephhosp@vsnl.net   |
| 15    | Lourdes Hospital, Errakulam,<br>Kochi – 682012 Kerala  | Dr Somu Abraham (Principal)<br>School of Allied Health Sciences<br>Mobile: 09895049026   |
| 16    | St. Thomas Mission Hospital,<br>Pallickal P.O. Kattanam,<br>Alappuzha (Dist.) – 690503 Kerala                                    | Fr Varghese Philip (Administator)<br>Ph: 0479-2332023<br>e-mail: sunnyachan@hotmail.com  |
| 17    | Narayana Hrudayalaya Institute of<br>Medical Sciences<br>258/A, Bommasandra Industrial Area,<br>Anekal Taluk, Bangalore – 560099 | Dr. Murlidhar K, Director - Academics<br>Phone: 080-27836966, 080-27835000-018,<br>09980163108<br>e-mail: hrudayalaya@sify.com,<br>kanchirulestheworld@gmail.com |
| 18    | Rabindranath Tagore International<br>Institute of Cardiac Sciences<br>124, Mukundapur, E.M. Bypass,<br>Kolkata - 700099          | Dr. Emmanuel Rupert (MD)<br>Chief Medical Services<br>Phone: 033-24364000, 24363000<br>Extn. 2256, 09831256910<br>e-mail: erupert@gmail.com                      |

\* Subject to notification by IGNOU.

## BACHELOR/ B.Sc IN MEDICAL RECORD SCIENCE AND HEALTH INFORMATION TECHNOLOGY (BMRHIT)

### LIST OF PROPOSED PROGRAMME STUDY CENTRES \*

| S.No. | Address  | Contact Person & Details   |
|-------|--|--|
| 1     | Bangalore Baptist Hospital<br>Bellary Road, Hebbal<br>Bangalore - 24 Karnataka                                   | Dr Alexander Thomas<br>Ph: 91-80-23330321-4, Fax: 23437970<br>E-mail: baptisthospital@dataone.in<br>Baptisthospital73@gmail.com                          |
| 2     | Catherine Booth Hospital Nagercoil<br>Kanyakumari Dist.<br>Tamil Nadu 629 001                                    | Major S.P. Simon<br>Ph: 275516, 275517<br>E-mail: cbh_admin@rediffmail.com   |
| 3     | Century Institute of Health Sciences<br>(Century Hospital)<br>Mulakuzha, Chengannur, Kerala – 689 505            | Prof. Babu Zacharia<br>Ph: (0479) – 2469469<br>E-mail: ctsl@satyam.net.in  |
| 4     | C.S.I. Hospital<br>Post Bag No. 4, H.K.P. Road<br>Bangalore – 560 051 Karnataka                                  | Dr Helen P Samuel<br>Ph: 22861 103 (5 lines)<br>E-mail: info@csihospitalblr.org<br>csihospitalblr@vsnl.net   |
| 5     | CSI Hospital, Neyyoor Hospital<br>Kanyakumari Medical Mission<br>Neyyoor, K.K. Dist, Tamil Nadu 629 802          | Dr Saleen Joel<br>Ph: 04651-2222222<br>E-mail: csimkkm@yahoo.com   |
| 6     | Dr Somervell Memorial CSI<br>Medical College & Hospital<br>Karakonam, Thiruvananthapuram<br>Dt. Kerala – 695 504 | Dr. Bennet Abraham<br>Director<br>Ph: 0471-2250233   |
| 7     | CSI Holdsworth Memorial Hospital<br>P.B. NO. 38, Mysore 570 021<br>Karnataka                                     | Dr Reuben Prakash Jackayya<br>Ph: 91-0821-2446644, 2521650, 514266370, 71, 72, 73<br>E-mail: reubanjackayya@yahoo.com<br>hnh@airtelbroadband.in          |
| 8     | Jubilee Mission Hospital & Medical College<br>Trichur, Kerala 680 005  | Fr Francis<br>Ph: 0487-2432200, 2420361<br>E-mail: trc_jbmission@sancharnet.in   |
| 9     | Lakeshore Hospital & Research Centre Ltd<br>NH – 47 By-pass, Maradu<br>Nettoor P O, Kochi, Kerala – 682 304      | Dr Thomas Thachil<br>Ph: 91-484-2701032  |
| 10    | Little Flower Institute of Medical<br>Sciences & Research (LIMSAR)<br>Angamaly Kerala 683 572                    | Dr J.K. Mukkadan<br>Ph: 91-484-2452547 Extn. 322,<br>Office: 2454846, 2452546, Principal 2458327<br>Fax: 91-484-2452646<br>E-mail: lfmcang@satyam.net.in |
| 11    | Lourdes Hospital Ernakulam, Kochi<br>Kerala 682 012  | Dr Somu Abraham<br>Principal, School of Allied Health Science  |
| 12    | Madras Medical Mission<br>N0 4A, Dr J J Nagar<br>Mogappair, Chennai, Tamil Nadu - 600 050                        | Dr Philomena Mariadoss<br>Ph: 91-44-26561801, 26565961, 26565991<br>E-mail: mmmadmin@mmm.org.in  |
| 13    | MOSC College of Allied Health Sciences<br>Kolenchery, Ernakulam Dist.<br>Kerala - 682 311                        | Dr Sojan Ipe<br>Ph: 0484-3055555, 2762960, 2760251<br>E-mail: mmmhn@moscmm.org   |
| 14    | Padhar Hospital, Padhar P O, Dist: Betul,<br>Madhya Pradesh - 460005   | Mr Rajiv Choudhrie<br>Medical Superintendent<br>Ph: (07141) 263228, 263318, 263163<br>E-mail: rajivchoudhrie@gmail.com                                   |



| S.No. | Address   | Contact Person & Details  |
|-------|---|---|
| 15    | Pondicherry Institute of Medical Sciences<br>Kalapet, Pondicherry - 605 014   | Dr James<br>Ph: 091413-2656603, 2656271   |
| 16    | Pushpagiri Medical Society<br>Pushpagiri Medical College Hospital<br>Tiruvalla, Kerala – 689 101                                    | Fr Thomas Kodinattumkunel<br>Ph: 0091-0469-2700755, Fax: 2701045, 2701044<br>E-mail : pms@pushpagiri.in                 |
| 17    | Seventh Day Adventist Hospital<br>Bariatu Road, Ranchi, Jharkhand – 834 009   | Rev C Murmu<br>Ph: 0651-3293831, Fax: 0651-2542356<br>E-mail: ranchihospital@rediffmail.com                             |
| 18    | Schiffelin Institute of Health Research<br>and Leprosy Centre, SLR Sanatorium<br>PO, Karigiri, Vellore Dist,<br>Tamilnadu - 632 106 | Dr Mannam Ebenezer<br>Ph: (0416) 2274229, 27, 23<br>E-mail: directorate@karigiri.org                                    |
| 19    | St. Stephen's Hospital<br>Tis Hazari, Delhi – 110 054   | Dr. Sudhir Joseph<br>Ph: 011-23957977, 23958005, 23982978, 23983580<br>23983573-74, 29366021-27<br>E-mail: ssh@vsnl.com |
| 20    | Tiruvalla Medical Mission College Road,<br>Tiruvalla PO, Pathanamthitta Dist,<br>Kerala 689 101                                     | Dr P.C Cherian<br>Ph: 2630144, 2630145  |
| 21    | Gifford Memorial Hospital<br>Nuzvid P.O. Krishna Dt. -521202<br>Andhra Pradesh  | Vara P Jacob (Administrator)<br>E-mail: gmh_nzd@rediffmail.com  |
| 22    | Arogyavaram Medical Centre<br>Arogyavaram – 517330 Andhra Pradesh   | Dr B. Wesley (Director)<br>Ph: 08947-234334<br>E-mail: arogyavaram-spt@yahoo.com  |
| 23    | Apollo Hospitals,<br>Lingyadih Village, Off Seepat Road,<br>Bilaspur – 495 001  | Dr. Arvind Kumar Gupta<br>Phone: 07752 404999<br>e-mail: dr_arvindgupta1957@yahoo.co.in                                 |
| 24    | Apollo Speciality Hospitals,<br>Lake View Road, KK Nagar,<br>Madurai – 625 020  | Mr.Karunamoorthy<br>Phone: 0452 2580892<br>e-mail: karunamoorthy_hr@yahoo.com   |
| 25    | Apollo Gleneagles Hospital<br>58, Canal Circular Road<br>Kolkata – 700 054  | Ms.Sarita Chatterjee<br>Phone: 033 23203040<br>e-mail: saritachatterjee@yahoo.com                                       |
| 26    | Apollo Hospitals<br>154 / 11, Opp. I.I.M, Bannerghatta Road,<br>Bangalore-560 076   | Dr.Govindaiah Yatheesh<br>Phone: 080 26304361<br>e-mail: dryatheesh_g@apollohospitals.com                               |
| 27    | Apollo Hospitals<br>21, Grems Lane, Off Grems Road<br>Chennai-600 006   | Ms.Mahalakshmi<br>Phone: 044 26536966<br>e-mail: aihmas@gmail.com   |
| 28    | Apollo Hospitals<br>105, Jubilee Hills<br>Hyderabad -500 033  | Dr.Sonali Reddy<br>Phone: 040 2360 7777<br>e-mail: sonalireddy_p@apollohospitals.com                                    |
| 29    | Apollo BGS Hospitals<br>Adhichunchanagiri Road,<br>Kuvempunagar, Mysore – 570 023   | Dr.S.M.Ravindranath<br>Phone: 0821 2568888<br>e-mail: ravindranath_s@apollohospitals.com                                |
| 30    | Apollo Hospitals<br>13-1-3, Suryaopeta Main Road<br>Kakinada – 533 001 Andhra Pradesh   | Dr.C.Suryaprakasa Rao<br>Phone: 0884 2345700<br>e-mail: drsuryaprakasarao_c@apollohospitals.com                         |
| 31    | Indraprastha Apollo Hospitals<br>Sarita Vihar, Delhi – Mathura Road<br>New Delhi – 110 076  | Dr.(Col) RN Sharma<br>Phone: 011 29871718<br>e-mail: rnsharma@apollohospitals.com                                       |

\* Subject to notification by IGNOU.

## BACHELOR/B.Sc. IN OPTOMETRY & OPHTHALMIC TECHNOLOGY (BSCHOT)

### List of Proposed Study Centres\*

| S.No. | Address   | Contact Person & Details  |
|-------|---|---|
| 1     | Christian Medical College<br>Ophthalmology Department<br>Schell Campus, Arni Road, Vellore<br>Tamilnadu - 632 001 | Dr. Asha Mary Jesudhasan<br>Ph: 416-2232921, 2222115, 2281201, 5211201<br>Email: eye@cmcvellore.ac.in                               |
| 2     | CSI Hospital Kanyakumari Medical Mission<br>Neyyoor – 629 802, Kanyakumari District<br>Tamilnadu                  | Dr Saleen Joel<br>Ph: 04651-2222222<br>E-mail: csimkkm@yahoo.com  |
| 3     | Dr. Somervell Memorial CSI Medical College<br>and Hospital, Karakonam,<br>Trivandrum – 695 504, Kerala            | Dr. Bennet Abraham<br>Ph: 0471-2250233  |
| 4     | Garnett Memorial Eye Hospital<br>Bungalowmedu, Mettupalayam – 641 301<br>Coimbatore District, TN                  | Dr. Samuel P.John<br>04254-222674, 223127<br>Email: gmeh@sify.com   |
| 5     | Joseph Eye Hospital International Centre<br>for Eye Health Melapudur, Tiruchirappalli<br>Tamil Nadu – 620 001     | Dr. Nelson Jesudasan<br>Ph: 0431-2460622, 2462862<br>E-mail: jehtry@eth.net   |
| 6     | Jubilee Mission Hospital<br>P.B.No.737, Thrissur – 680005, Kerala   | Fr Francis<br>Ph: 0487-2432200, 2420361/ 2421650, 2420136<br>Email: trc-jbmission@sancharnet.in                                     |
| 7     | CSI Kalyani Multi-speciality Hospital<br>No.15, Dr.Radhakrishnan Salai, Chennai<br>Tamilnadu -600 004             | Dr.Rajakumari Sunder MD, DGO<br>Ph: 044-28475101, 28470642<br>28473306, 28476433  |
| 8     | Kothara Community Hospital<br>PO Paratwada, Amravati District<br>Maharashtra                                      | Dr.Shyamala Anand, M.S. (Oph.)<br>Ph: 07223-220118<br>Email: shyamalaanand@timindia.org   |
| 9     | Little Flower Institute of Medical Sciences<br>& Research (LIMSAR), Angamaly<br>Kerala 683 572                    | Dr J.K. Mukkadan<br>Ph: 91-484-2452547 Extn. 322,<br>2454846, 24525462458327, Fax: 91-484-2452646<br>E-mail: lfmrcang@satyam.net.in |
| 10    | St. Stephen's Hospital<br>Tis Hazari, New Delhi – 110 401   | Dr. Sudhir Joseph<br>Ph: 011-23957977, 23958005, 23982978, 23983580,<br>23983573-74, 29366021-27<br>E-mail: ssh@vsnl.com            |
| 11    | MOSC College of Allied Health Sciences<br>Kolencherry, Ernakulam Dist. Kerala-682311                              | Dr Sunil Thomas<br>Mobile: 098388913493   |
| 12    | Pushpagiri Medical College Hospital<br>Tiruvalla – 689101 Kerala  | Fr Thomas Kodinattum Junnel<br>Ph: 0469-2700755   |
| 13    | Metas Adventist College<br>P.O. Box No. Athwalines<br>Surat – 395001 Gujarat                                      | Dr M. S. Jeremiah<br>Ph: 0261-2667591-95  |
| 14    | Arogyavaram Medical Centre<br>Arogyavaram – 517330 Andhra Pradesh   | Dr B. Wesley (Director)<br>Ph: 08571-222228<br>E-mail: arogyavaram-spt@yahoo.com  |

| S.No. | Address  | Contact Person & Details  |
|-------|--|---|
| 15    | Dr Bejan Singh Eye Hospital<br>2/1-313C M. S. Road Vettoorimadam<br>Nagercoil, K.K. District Tamil Nadu - 629003   | Dr P.V. Thomas<br>Medical Director<br>E-mail: bejansingh@yahoo.com  |
| 16    | Nethra Eye Care Centre<br>Main Road, Irinjalakuda Trissur<br>Dist. – 680 121 Kerala  | Dr. P.V. Thomas<br>Ph: 0480-2822579<br>E-mail: info@nethraeyecare.com   |
| 17    | Eye Microsurgery and Laser Centre<br>International Complex, Trivalla – 689 101   | Dr. Amrita Verghese<br>Ph: 2605727, 2635645, 2605475<br>Mobile: 09249100692, 09847373395<br>E-mail: lasercentre@sify.com      |
| 18    | St. Thomas Mission Hospital<br>Pallickal P.O. Kattanam,<br>Alappuzha (Dist) – 690 503 Kerala   | Fr Varghese Philip (Administrator)<br>Ph: 0479-2332023<br>E-mail: sunnyachan@hotmail.com                                      |
| 19    | Global Hospital Institute of Ophthalmology<br>Village Karoli, Sirohi Road Opp. Modern<br>Insulators, Tehsil Abu Road<br>District Sirohi - 307510 (RAJASTHAN) | Dr. V. K. Sharma<br>Chief Clinical Services<br>Ph: 02974-228472, 228336 Fax: 02974-228670<br>E-mail: traumaghrcuabu@gmail.com |

\* Subject to notification by IGNOU.

## BACHELOR/B.Sc. IN RADIATION THERAPY TECHNOLOGY

### List of Proposed Study Centres\*

| S.No. | Address  | Contact Person & Details   |
|-------|--|--|
| 1     | Amala Cancer Hospital & Research Centre<br>Amalanagar P.O. Trichur<br>Dist. Kerala 680 555                                       | Fr Paul Achandy<br>Ph: 91-487-2304000<br>Email: frpaulak@hotmail.com<br>amalacan@md3.vsnl.net.in<br>amalacan2@gmail.com  |
| 2     | CSI Hospital<br>Neyyoor, K.K. Dist<br>Tamil Nadu 629 802   | Dr Saleen Joel<br>Ph: 04651-2222222<br>E-mail: csimkkm@yahoo.com   |
| 3     | Padhar Hospital<br>Padhar P O, Dist: Betul,<br>Madhya Pradesh - 460005   | Mr Rajiv Choudhrie<br>Ph: (07141) 263228, 263318, 263163<br>E-mail: rajivchoudhrie@gmail.com   |
| 4     | Narayana Hrudayalaya Institute of<br>Medical Sciences<br>258/A, Bommasandra Industrial Area,<br>Anekal Taluk, Bangalore – 560099 | Dr. Murlidhar K, Director - Academics<br>Phone: 080-27836966, 080-27835000-018,<br>09980163108<br>e-mail: hrudayalaya@sify.com,<br>kanchirulestheworld@gmail.com |
| 5     | Rabindranath Tagore International<br>Institute of Cardiac Sciences<br>124, Mukundapur, E.M. Bypass,<br>Kolkata - 700099          | Dr. Emmanuel Rupert (MD)<br>Chief Medical Services<br>Phone: 033-24364000, 24363000<br>Extn. 2256, 09831256910<br>e-mail: erupert@gmail.com                      |

\*Subject to notification by IGNOU.

## BACHELOR/B.Sc. IN MEDICAL IMAGING TECHNOLOGY

### List of Proposed Study Centres\*

| S.No. | Study Centre Address   | Contact Person & Details  |
|-------|--|---|
| 1     | Amala Cancer Hospital & Research Centre<br>Amalanagar P.O., Trichur Dist.<br>Kerala 680 555                                    | Fr Paul Achandy<br>Ph:91-487-2304000<br>Email:frpaulak@hotmail.com<br>amalacan@md3.vsnl.net.in,<br>Amalacan2@gmail.com          |
| 2     | Arogyavaram Medical Centre<br>Union Mission Tuberculosis Sanatorium<br>Arogyavaram, Chittoor Dist.<br>Andhra Pradesh - 517 330 | Dr B. Wesley<br>Ph: (Off) 08571-222228, (Res) 08571-222045<br>E-mail: csi.amc@yahoo.co.in                                       |
| 3     | Bangalore Baptist Hospital<br>Bellary Road, Hebbal<br>Bangalore - 24   | Dr Alexander Thomas<br>Ph: 91-80-23330321-4, Fax: 23437970<br>E-mail: baptisthospital@dataone.in<br>Baptisthospital73@gmail.com |
| 4     | Catherine Booth Hospital Nagercoil,<br>Tamil Nadu 629 001  | Major S.P. Simon<br>E-mail: cbh_admin@rediffmail.com  |
| 5     | C.S.I. Hospital, Post Bag No. 4,<br>H.K.P. Road, Bangalore – 560 051   | Dr Helen P Samuel<br>Ph: 22861103,<br>E-mail: info@csihospitalblr.org   |
| 6     | CSI Kalyani Multi Specialty Hospital<br>No. 15, Radhakrishnan Salai, Chennai<br>Tamil Nadu 600 004                             | Dr Rajkumari Sunder<br>Ph: 28475101, 28470642, 28473306, 28476433   |
| 7     | CSI Hospital<br>Neyyoor, K.K. Dist,<br>Tamil Nadu 629 802  | Dr Saleen Joel<br>Ph: 04651-2222222,<br>E-mail: csimkkm@yahoo.com   |
| 8     | Dr Jeyasekharan Hospital & Nursing Home,<br>K.P. Road, Nagercoil, Tamilnadu – 629 003  | Dr D. Devaprasath Jeyasekharan<br>Ph: 230019, 230020<br>E-mail: jeyasekharanmedicaltrust@ gmail.com                             |
| 9     | Holy Cross Hospital<br>Kottiyam, Kollam, Kerala 691 571  | Sr Fides Thottan<br>Ph: (0474) 2530121-4, 3041000, Fax: 0474 2530531,<br>E-mail: holycrossk@dataone.in                          |
| 10    | Jubilee Mission Hospital & Medical College<br>Trichur, Kerala 680 005  | Fr Francis<br>Ph: 0487-2432200, 2420361<br>E-mail: trc_jbmission@sancharnet.in  |
| 11    | MOSC College of Allied Health Sciences<br>Kolenchery, Ernakulam Dist.<br>Kerala - 682 311                                      | Dr Sojan Ipe<br>Ph: 0484-3055555, 2762960, 2760251<br>E-mail: mmmhn@moscmm.org  |
| 12    | Pushpagiri Medical College Hospital<br>Tiruvalla, Kerala – 689 101   | Fr Thomas Kodinattumkunnel<br>Ph:0091-0469-2700755, Fax: 2701045, 2701044<br>E-mail : pms@pushpagiri.in                         |
| 13    | Padhar Hospital<br>Padhar P O, Dist: Betul,<br>Madhya Pradesh - 460005   | Mr Rajiv Choudhrie<br>Ph: (07141) 263228, 263318, 263163<br>E-mail: rajivchoudhrie@gmail.com                                    |

| S.No. | Study Centre Address   | Contact Person & Details  |
|-------|--|---|
| 14    | Apollo Hospitals, Lingyadiah Village,<br>Off Seepat Road, Bilaspur – 495 001   | Dr. Arvind Kumar Gupta<br>Phone: 07752 404999<br>e-mail: dr_arvindgupta1957@yahoo.co.in   |
| 15    | Apollo Speciality Hospitals,<br>Lake View Road, KK Nagar,<br>Madurai – 625 020   | Mr. Karunamoorthy<br>Phone: 0452 2580892<br>e-mail: karunamoorthy_hr@yahoo.com  |
| 16    | Apollo Gleneagles Hospital<br>58, Canal Circular Road<br>Kolkata – 700 054   | Ms. Sarita Chatterjee<br>Phone: 033 23203040<br>e-mail: saritachatterjee@yahoo.com  |
| 17    | Apollo Hospitals International Ltd<br>Plot No. 1A, Bhat GIDC Estate,<br>Dist. Gandhinagar, Ahmedabad-382 428                     | Dr. Nikhil Lala<br>Phone: 079 66701800,<br>e-mail: lala@apolloahd.com   |
| 18    | Apollo Hospitals<br>154/11, Opp. I.I.M, Bannerghatta Road,<br>Bangalore-560 076  | Dr. Govindaiah Yatheesh<br>Phone: 080 26304361<br>e-mail: dryatheesh_g@apollohospitals.com  |
| 19    | Apollo Hospitals<br>21, Greaves Lane, Off Greaves Road<br>Chennai-600 006  | Ms. Mahalakshmi<br>Phone: 044 26536966<br>e-mail: aihmas@gmail.com  |
| 20    | Apollo Hospitals<br>105, Jubilee Hills<br>Hyderabad -500 033   | Dr. Sonali Reddy<br>Phone: 040 2360 7777<br>e-mail: sonalireddy_p@apollohospitals.com   |
| 21    | Apollo BGS Hospitals<br>Adhichunchanagiri Road, Kuvempunagar,<br>Mysore – 570 023  | Dr. S.M. Ravindranath<br>Phone: 0821 2568888<br>e-mail: ravindranath_s@apollohospitals.com  |
| 22    | SPS Apollo Hospitals<br>Sherpur Chowk, GT Road<br>Ludhiana – 141 003   | Dr. Geeta Chaudhary<br>Phone: 0161 5037706<br>e-mail: chaudhary_g@hotmail.com   |
| 23    | Apollo BSR Hospitals<br>Junwani Road, Smriti Nagar<br>Bhilai – 490 020, Chhattisgarh   | Dr. SM Sharma<br>Phone: 0788 4085131<br>e-mail: “med.supdt.”@apollobsr.com  |
| 24    | Apollo Hospitals<br>13-1-3, Suryapeta Main Road<br>Kakinada – 533 001 Andhra Pradesh   | Dr. C. Suryaprakasa Rao<br>Phone: 0884 2345700<br>e-mail: drsuryaprakasarao_c@apollohospitals.com   |
| 25    | Indraprastha Apollo Hospitals<br>Sarita Vihar Delhi – Mathura Road<br>New Delhi – 110 076  | Dr. (Col) RN Sharma<br>Phone: 011 29871718<br>e-mail: rnsharma@apollohospitals.com  |
| 26    | St. Stephen's Hospital<br>Tis Hazari, Delhi - 110054   | Dr. Sudhir Joseph (Director)<br>E-mail: ssh@vsnl.com  |
| 27    | Methodist Hospital<br>Jaisinghpura, Mathura – 281003 UP  | Ashvin M Singh (Asst. Director)<br>Ph: 0565-2530043 Fax: 0565-2530003   |
| 28    | Narayana Hrudayalaya Institute of<br>Medical Sciences<br>258/A, Bommasandra Industrial Area,<br>Anekal Taluk, Bangalore – 560099 | Dr. Murlidhar K, Director - Academics<br>Phone: 080-27836966, 080-27835000-018, 09980163108<br>e-mail: hrudayalaya@sify.com,<br>kanchirulestheworld@gmail.com |
| 29    | Rabindranath Tagore International<br>Institute of Cardiac Sciences<br>124, Mukundapur, E.M. Bypass,<br>Kolkata - 700099          | Dr. Emmanuel Rupert (MD), Chief Medical Services<br>Phone: 033-24364000, 24363000<br>Extn. 2256, 09831256910<br>e-mail: erupert@gmail.com                     |

\* Subject to notification by IGNOU.

## BACHELOR/ B.Sc. IN ANAESTHESIA & CRITICAL CARE TECHNOLOGY (BACT)

### List of Proposed Study Centres\*

| S.No. | Study Centre Address   | Contact Person & Details   |
|-------|--|--|
| 1     | Bangalore Baptist Hospital<br>Bellary Road, Hebbal<br>Bangalore - 24   | Dr Alexander Thomas<br>Ph: 91-80-23330321-4, Fax: 23437970<br>E-mail: baptisthospital@dataone.in<br>Baptisthospital73@gmail.com                  |
| 2     | Catherine Booth Hospital Nagercoil,<br>Kanyakumari Dist. Tamil Nadu 629 001                                    | Major S.P. Simon<br>Ph: 275516, 275517<br>E-mail: cbh_admin@rediffmail.com   |
| 3     | CSI Holdsworth Memorial Hospital<br>Mysore 570 021, Karanataka   | Dr Reuben Prakash Jackayya<br>Ph: 91-0821-2446644, 2521650, 514266370, 71, 72, 73,<br>E-mail: reubanjackayya@yahoo.com<br>hnh@airtelbroadband.in |
| 4     | Dr Jeyasekharan Hospital & Nursing Home<br>K.P. Road, Nagercoil, Tamilnadu – 629 003                           | Dr D. Devaprasath Jeyasekharan<br>Medical Superintendent<br>Ph: 04652-230019, 230020<br>E-mail: jeyasekharanmedicaltrust@gmail.com               |
| 5     | Jubilee Mission Hospital & Medical College<br>Trichur, Kerala 680 005  | Fr Francis<br>Ph: 0487-2432200, 2420361<br>E-mail: trc_jbmission@sancharnet.in   |
| 6     | Lakeshore Hospital & Research Centre Ltd,<br>NH – 47 By-pass, Maradu<br>Nettoor P O, Kochi<br>Kerala – 682 304 | Dr Thomas Thachil<br>Ph: 91-484-2701032  |
| 7     | Lisie Medical and Educational Institutions<br>Ernakulam, Kochi, Kerala 682 018                                 | Fr Mathew Muttamthotty<br>Ph: 0484-2401102,<br>E-mail: contact@lisiehospital.org   |
| 8     | Little Flower Institute of Medical Sciences<br>& Research (LIMSAR) Angamaly,<br>Kerala 683 572                 | Dr J.K. Mukkadan<br>Ph: 91-484-2452547 Extn. 322<br>Office: 2454846, 2452546, 2458327<br>Fax: 91-484-2452646,<br>E-mail: lfmrang@satyam.net.in   |
| 9     | Madras Medical Mission<br>N0 4A, Dr J J Nagar<br>Mogappair, Chennai, Tamil Nadu - 600 050                      | Dr Philomena Mariadoss<br>Ph: 91-44-26561801, 26565961, 26565991<br>E-mail: mmmadmin@mmm.org.in  |
| 10    | MOSC College of Allied Health Sciences<br>Kolenchery, Ernakulam Dist.<br>Kerala - 682 311                      | Dr Sojan Ipe<br>Ph: 0484-3055555, 2762960, 2760251<br>E-mail: mmmhn@moscmm.org   |
| 11    | Muthoot Medical Centre (P) Ltd<br>Ring Road, Pathanamthitta Kerala 689 645                                     | Mr Mathew Philip<br>Ph: 0468-231400 E-mail: muthootmc@sify.com   |
| 12    | Muthoot Medical Centre<br>Kozhenchery, Kerala 689 641  | Dr Samuel Thomas Ph: 0468-231400   |
| 13    | Paalana Institute of Medical Science<br>Palakkad, Kerala 678 701   | Ph: 0491-2520901   |



| S.No. | Study Centre Address   | Contact Person & Details   |
|-------|--|--|
| 14    | Pondicherry Institute of Medical Sciences<br>Kalapet, Pondicherry - 605 014                                  | Dr James<br>Ph: 091413-2656603, 2656271  |
| 15    | Pushpagiri Medical Society<br>Pushpagiri Medical College Hospital<br>Tiruvalla, Kerala – 689 101             | Fr Thomas Kodinattumkunel<br>Ph: 0091-0469-2700755<br>Fax: 2701045, 2701044, E-mail : pms@pushpagiri.in                |
| 16    | Metas Of Seventh Day Adventist<br>Post Box 24, Athwa Lines<br>Surat, Gujarat - 395001                        | Dr M.S. Jeremiah<br>Ph: (0261) 2667591-95<br>E-mail: jeremiahms@rediffmail.com   |
| 17    | St. Stephen's Hospital<br>Tis Hazari, Delhi – 110 054  | Dr. Sudhir Joseph<br>Ph: 011-23957977, 23958005, 23982978, 23983580,<br>23983573-74, 29366021-27, E-mail: ssh@vsnl.com |
| 18    | Tiruvalla Medical Mission College Road,<br>Tiruvalla PO Pathanamthitta Dist,<br>Kerala 689 101               | Dr P.C Cherian<br>Ph: 2630144, 2630145   |
| 19    | Apollo Hospitals, Lingyadhi Village,<br>Off Seepat Road, Bilaspur – 495 001                                  | Dr. Arvind Kumar Gupta<br>Phone: 07752 404999<br>e-mail: dr_arvindgupta1957@yahoo.co.in                                |
| 20    | Apollo Speciality Hospitals,<br>Lake View Road, KK Nagar,<br>Madurai – 625 020                               | Mr. Karunamoorthy<br>Phone: 0452 2580892<br>e-mail: karunamoorthy_hr@yahoo.com   |
| 21    | Apollo Gleneagles Hospital<br>58, Canal Circular Road, Kolkata – 700 054                                     | Ms. Sarita Chatterjee<br>Phone: 033 23203040<br>e-mail: saritachatterjee@yahoo.com                                     |
| 22    | Apollo Hospitals International Ltd<br>Plot No. 1A, Bhat GIDC Estate,<br>Dist. Gandhinagar, Ahmedabad-382 428 | Dr. Nikhil Lala<br>Phone: 079 66701800<br>e-mail: lala@apolloahd.com   |
| 23    | Apollo Hospitals<br>154 / 11, Opp. I.I.M, Bannerghatta Road,<br>Bangalore-560 076                            | Dr. Govindaiah Yatheesh<br>Phone: 080 26304361<br>e-mail: dryatheesh_g@apollohospitals.com                             |
| 24    | Apollo Hospitals<br>21, Greaves Lane, Off Greaves Road<br>Chennai-600 006                                    | Ms. Mahalakshmi<br>Phone: 044 26536966<br>e-mail: aihmas@gmail.com   |
| 25    | Apollo Hospitals<br>105, Jubilee Hills<br>Hyderabad -500 033   | Dr. Sonali Reddy<br>Phone: 040 2360 7777<br>e-mail: sonalireddy_p@apollohospitals.com                                  |
| 26    | Apollo BGS Hospitals<br>Adhichunchanagiri Road, Kuvempunagar,<br>Mysore – 570 023                            | Dr. S.M. Ravindranath<br>Phone: 0821 2568888<br>e-mail: ravindranath_s@apollohospitals.com                             |
| 27    | SPS Apollo Hospitals<br>Sherpur Chowk, GT Road<br>Ludhiana – 141 003   | Dr. Geeta Chaudhary<br>Phone: 0161 5037706<br>e-mail: chaudhary_g@hotmail.com  |
| 28    | ARAM Weavers' Hospital (Apollo Group)<br>PO – Irba, Ranchi – 835 238, Jharkhand                              | Dr. P.D. Sinha<br>Phone: 0651 2276041<br>e-mail: drpdsinha1@rediffmail.com   |

| S.No. | Study Centre Address   | Contact Person & Details  |
|-------|--|---|
| 29    | Apollo BSR Hospitals<br>Junwani Road, Smiriti Nagar<br>Bhilai – 490 020, Chhattisgarh  | Dr. S.M. Sharma<br>Phone: 0788 4085131<br>e-mail: “med.supdt.”@apollobsr.com  |
| 30    | Apollo Hospitals<br>13-1-3, Suryaraopeta Main Road<br>Kakinada – 533 001, Andhra Pradesh   | Dr. C. Suryaprakasa Rao<br>Phone: 0884 2345700<br>e-mail: drsuryaprakasarao_c@apollohhospitals.com  |
| 31    | Indraprastha Apollo Hospitals<br>Sarita Vihar, Delhi – Mathura Road<br>New Delhi – 110 076                                       | Dr.(Col) R.N. Sharma<br>Phone: 011 29871718<br>e-mail: rnsharma@apollohhospitals.com  |
| 32    | Narayana Hrudayalaya Institute of<br>Medical Sciences<br>258/A, Bommasandra Industrial Area,<br>Anekal Taluk, Bangalore – 560099 | Dr. Murlidhar K, Director - Academics<br>Phone: 080-27836966, 080-27835000-018, 09980163108<br>e-mail: hrudayalaya@sify.com,<br>kanchirulestheworld@gmail.com |
| 33    | Rabindranath Tagore International<br>Institute of Cardiac Sciences<br>124, Mukundapur, E.M. Bypass,<br>Kolkata - 700099          | Dr. Emmanuel Rupert (MD)<br>Chief Medical Services<br>Phone: 033-24364000, 24363000<br>Extn. 2256, 09831256910<br>e-mail: erupert@gmail.com                   |

\* Subject to notification by IGNOU.

## DIPLOMA IN MEDICAL LABORATORY TECHNOLOGY (DMLT)

### List of Proposed Study Centres\*

| S.No. | Study Centre Address  | Contact Person & Details  |
|-------|---|---|
| 1     | BSS EDUCATIONAL INSTITUTION<br>Sherli Marin Campus, Third Cross,<br>Arulananda Nagar, Thanjavur – 613007<br>Tamil Nadu. | Shri S.A.G. Moison<br>Director, Vocational Education,<br>B.S.S. Chennai-600045<br>Phone: 044-22382031, 044-22382041<br>email: info@bssve.in |
| 2     | BSS EDUCATIONAL INSTITUTION<br>Kayankulam, Alappuzha, Kerala  | Shri S.A.G. Moison, Director, Vocational Education,<br>B.S.S. Chennai-600045 Phone: 044-22382031, 22382041<br>email: info@bssve.in          |
| 3     | BSS EDUCATIONAL INSTITUTION<br>Near Private Bus Stand, Market Road,<br>Aluva, Ernakulam, Kerala                         | Shri S.A.G. Moison, Director, Vocational Education,<br>B.S.S. Chennai-600045 Phone: 044-22382031, 22382041<br>email: info@bssve.in          |
| 4     | BSS EDUCATIONAL INSTITUTION<br>5, Saint Carmel campus, Beach Road,<br>Cuddalore – 607 001 Tamil Nadu                    | Shri S.A.G. Moison, Director, Vocational Education,<br>B.S.S. Chennai-600045 Phone: 044-22382031, 22382041<br>email: info@bssve.in          |
| 5     | BSS EDUCATIONAL INSTITUTION<br>Co-operative College Building,<br>Library Road, Adimali. Idukki, Kerala                  | Shri S.A.G. Moison, Director, Vocational Education,<br>B.S.S. Chennai-600045 Phone: 044-22382031, 22382041<br>email: info@bssve.in          |
| 6     | BSS COMMUNITY COLLEGE<br>Ambika Complex, Opp. Govt. Women's<br>College, Pallikunnu, Kannur, Kerala                      | Shri S.A.G. Moison, Director, Vocational Education,<br>B.S.S. Chennai-600045 Phone: 044-22382031, 22382041<br>email: info@bssve.in          |
| 7     | BSS EDUCATIONAL INSTITUTION<br>Chirapura, Nileschwara, Kasargod, Kerala.  | Shri S.A.G. Moison, Director, Vocational Education,<br>B.S.S. Chennai-600045 Phone: 044-22382031, 22382041<br>email: info@bssve.in          |

| S.No. | Study Centre Address   | Contact Person & Details   |
|-------|--|--|
| 8     | BSS EDUCATIONAL INSTITUTION<br>Parasala, Thiruvananthapuram, Kerala  | Shri S.A.G. Moison, Director, Vocational Education,<br>B.S.S. Chennai-600045 Phone: 044-22382031, 22382041<br>email: info@bssve.in |
| 9     | BSS EDUCATIONAL INSTITUTION<br>37, Saint Carmel campus, Sri Nagar Colony<br>Kumbakonam – 612 001, Tamil Nadu | Shri S.A.G. Moison, Director, Vocational Education,<br>B.S.S. Chennai-600045 Phone: 044-22382031, 22382041<br>email: info@bssve.in |
| 10    | BSS EDUCATIONAL INSTITUTION<br>Kallara, Thiruvananthapuram, Kerala   | Shri S.A.G. Moison, Director, Vocational Education,<br>B.S.S. Chennai-600045 Phone: 044-22382031, 22382041<br>email: info@bssve.in |
| 11    | Apollo Hospitals, Lingyadiah Village,<br>Off Seepat Road, Bilaspur – 495 001                                 | Dr. Arvind Kumar Gupta<br>Phone: 07752 404999<br>e-mail: dr_arvindgupta1957@yahoo.co.in  |
| 12    | Apollo Speciality Hospitals,<br>Lake View Road, KK Nagar,<br>Madurai – 625 020                               | Mr. Karunamoorthy<br>Phone: 0452 2580892<br>e-mail: karunamoorthy_hr@yahoo.com   |
| 13    | Apollo Gleneagles Hospital<br>58, Canal Circular Road<br>Kolkata – 700 054                                   | Ms. Sarita Chatterjee<br>Phone: 033 23203040<br>e-mail: saritachatterjee@yahoo.com   |
| 14    | Apollo Hospitals International Ltd<br>Plot No. 1A, Bhat GIDC Estate,<br>Dist. Gandhinagar, Ahmedabad-382 428 | Dr. Nikhil Lala<br>Phone: 079 66701800<br>e-mail: lala@apolloahd.com   |
| 15    | Apollo Hospitals<br>154 / 11, Opp. I.I.M, Bannerghatta Road,<br>Bangalore-560 076                            | Dr. Govindaiah Yatheesh<br>Phone: 080 26304361<br>e-mail: dryatheesh_g@apollohospitals.com   |
| 16    | Apollo Hospitals<br>21, Greaves Lane, Off Greaves Road<br>Chennai-600 006                                    | Ms. Mahalakshmi<br>Phone: 044 26536966,<br>e-mail: aihmas@gmail.com  |
| 17    | Apollo Hospitals<br>105, Jubilee Hills Hyderabad -500 033  | Dr. Sonali Reddy<br>Phone: 040 2360 7777<br>e-mail: sonalireddy_p@apollohospitals.com  |
| 18    | Apollo BGS Hospitals<br>Adhichunchanagiri Road, Kuvempunagar,<br>Mysore – 570 023                            | Dr. S.M. Ravindranath<br>Phone: 0821 2568888<br>e-mail: ravindranath_s@apollohospitals.com   |
| 19    | SPS Apollo Hospitals<br>Sherpur Chowk, GT Road,<br>Ludhiana – 141 003  | Dr. Geeta Chaudhary<br>Phone: 0161 5037706,<br>e-mail: chaudhary_g@hotmail.com   |
| 20    | Apollo BSR Hospitals<br>Junwani Road, Smiriti Nagar<br>Bhilai – 490 020, Chhattisgarh                        | Dr. SM Sharma<br>Phone: 0788 4085131<br>e-mail: “med.supdt.”@apollobsr.com   |
| 21    | Apollo Hospitals<br>13-1-3, Suryapeta Main Road<br>Kakinada – 533 001<br>Andhra Pradesh                      | Dr. C. Suryaprakasa Rao<br>Phone: 0884 2345700<br>e-mail: drsuryaprakasarao_c@apollohospitals.com                                  |
| 22    | Indraprastha Apollo Hospitals<br>Sarita Vihar Delhi – Mathura Road<br>New Delhi – 110 076                    | Dr. (Col) RN Sharma<br>Phone: 011 29871718<br>e-mail: rnsharma@apollohospitals.com   |

\* Subject to notification by IGNOU.

## DIPLOMA IN OPTOMETRY (DOPT)

### List of Proposed Study Centres\*

| S.No. | Study Centre Address  | Contact Person & Details   |
|-------|---|--|
| 1     | Apollo Hospitals International Ltd<br>Plot No. 1A, Bhat GIDC Estate,<br>Dist. Gandhinagar, Ahmedabad-382 428            | Dr.Nikhil Lala<br>Phone: 079 66701800<br>e-mail: lala@apolloahd.com  |
| 2     | BSS EDUCATIONAL INSTITUTION<br>Sherli Marin Campus, Third Cross,<br>Arulananda Nagar, Thanjavur – 613007<br>Tamil Nadu. | Shri S.A.G. Moison, Director, Vocational Education,<br>B.S.S. Chennai-600045 Phone: 044-22382031, 22382041<br>email: info@bssve.in |
| 3     | BSS EDUCATIONAL INSTITUTION<br>Kayankulam, Alappuzha, Kerala  | Shri S.A.G. Moison, Director, Vocational Education,<br>B.S.S. Chennai-600045 Phone: 044-22382031, 22382041<br>email: info@bssve.in |
| 4     | BSS EDUCATIONAL INSTITUTION<br>Near Private Bus Stand, Market Road, Aluva,<br>Ernakulam, Kerala                         | Shri S.A.G. Moison, Director, Vocational Education,<br>B.S.S. Chennai-600045 Phone: 044-22382031, 22382041<br>email: info@bssve.in |
| 5     | BSS EDUCATIONAL INSTITUTION<br>5, Saint Carmel campus, Beach Road,<br>Cuddalore – 607 001 Tamil Nadu                    | Shri S.A.G. Moison, Director, Vocational Education,<br>B.S.S. Chennai-600045 Phone: 044-22382031, 22382041<br>email: info@bssve.in |
| 6     | BSS EDUCATIONAL INSTITUTION<br>Co-operative College Building, Library Road,<br>Adimali. Idukki, Kerala                  | Shri S.A.G. Moison, Director, Vocational Education,<br>B.S.S. Chennai-600045 Phone: 044-22382031, 22382041<br>email: info@bssve.in |
| 7     | BSS COMMUNITY COLLEGE<br>Ambika Complex, Opp.Govt.Women's College,<br>Pallikunnu, Kannur,Kerala                         | Shri S.A.G. Moison, Director, Vocational Education,<br>B.S.S. Chennai-600045 Phone: 044-22382031, 22382041<br>email: info@bssve.in |
| 8     | BSS EDUCATIONAL INSTITUTION<br>Chirapura, Nileschwara, Kasargod Kerala.   | Shri S.A.G. Moison, Director, Vocational Education,<br>B.S.S. Chennai-600045 Phone: 044-22382031, 22382041                         |
| 9     | BSS EDUCATIONAL INSTITUTION<br>Parasala, Thiruvananthapuram, Kerala   | Shri S.A.G. Moison, Director, Vocational Education,<br>B.S.S. Chennai-600045 Phone: 044-22382031, 22382041                         |
| 10    | BSS EDUCATIONAL INSTITUTION<br>Kallara, Thiruvananthapuram, Kerala  | Shri S.A.G. Moison, Director, Vocational Education,<br>B.S.S. Chennai-600045 Phone: 044-22382031, 22382041                         |
| 11    | BSS EDUCATIONAL INSTITUTION<br>37, Saint Carmel campus,<br>Sri Nagar Colony Kumbakonam – 612 001,<br>Tamil Nadu         | Shri S.A.G. Moison, Director, Vocational Education,<br>B.S.S. Chennai-600045 Phone: 044-22382031, 22382041<br>email: info@bssve.in |

\* Subject to notification by IGNOU.

## DIPLOMA IN RADIO IMAGING TECHNOLOGY (DRIT)

### List of Proposed Study Centres\*

| S.No. | Study Centre Address  | Contact Person & Details  |
|-------|---|---|
| 1     | BSS EDUCATIONAL INSTITUTION<br>Sherli Marin Campus, Third Cross,<br>Arulanda Nagar, Thanjavur-613007 TN         | Shri S.A.G. Moison, Director, Vocational Education<br>B.S.S. Chennai – 600045<br>Phone: 044-22382031/41 E-mail: info@bssve.in |
| 2     | BSS EDUCATIONAL INSTITUTION<br>Kayankulam, Alappuzha, Kerala  | Shri S.A.G. Moison, Director, Vocational Education<br>B.S.S. Chennai – 600045<br>Phone: 044-22382031/41 E-mail: info@bssve.in |
| 3     | BSS EDUCATIONAL INSTITUTION<br>Near Private Bus Stand, Market Road, Aluva,<br>Ernakulam, Kerala                 | Shri S.A.G. Moison, Director, Vocational Education<br>B.S.S. Chennai – 600045<br>Phone: 044-22382031/41 E-mail: info@bssve.in |
| 4     | BSS EDUCATIONAL INSTITUTION<br>5, Saint Carmel campus, Beach Road,<br>Cuddalore – 607 001 Tamil Nadu            | Shri S.A.G. Moison, Director, Vocational Education<br>B.S.S. Chennai – 600045<br>Phone: 044-22382031/41 E-mail: info@bssve.in |
| 5     | BSS EDUCATIONAL INSTITUTION<br>Co-operative College Building, Library Road,<br>Adimali. Idukki, Kerala          | Shri S.A.G. Moison, Director, Vocational Education<br>B.S.S. Chennai – 600045<br>Phone: 044-22382031/41 E-mail: info@bssve.in |
| 6     | BSS COMMUNITY COLLEGE<br>Ambika Complex, Opp.Govt.Women's College,<br>Pallikunnu, Kannur, Kerala                | Shri S.A.G. Moison, Director, Vocational Education<br>B.S.S. Chennai – 600045<br>Phone: 044-22382031/41 E-mail: info@bssve.in |
| 7     | BSS EDUCATIONAL INSTITUTION<br>Chirapura, Nileschwara, Kasargod, Kerala   | Shri S.A.G. Moison, Director, Vocational Education<br>B.S.S. Chennai – 600045<br>Phone: 044-22382031/41 E-mail: info@bssve.in |
| 8     | BSS EDUCATIONAL INSTITUTION<br>Parasala, Thiruvananthapuram, Kerala   | Shri S.A.G. Moison, Director, Vocational Education<br>B.S.S. Chennai – 600045<br>Phone: 044-22382031/41 E-mail: info@bssve.in |
| 9     | BSS EDUCATIONAL INSTITUTION<br>Kallara, Thiruvananthapuram, Kerala  | Shri S.A.G. Moison, Director, Vocational Education<br>B.S.S. Chennai – 600045<br>Phone: 044-22382031/41 E-mail: info@bssve.in |
| 10    | BSS EDUCATIONAL INSTITUTION<br>37, Saint Carmel campus,<br>Sri Nagar Colony Kumbakonam – 612 001,<br>Tamil Nadu | Shri S.A.G. Moison, Director, Vocational Education<br>B.S.S. Chennai – 600045<br>Phone: 044-22382031/41 E-mail: info@bssve.in |

\* Subject to notification by IGNOU.

## BACHELOR/B.SC IN OPTOMETRY & OPHTHALMIC TECHNOLOGY AND DIPLOMA IN OPTOMETRY

### List of IGNOU's Study Centres

| S.No. | Address   | Contact Person            |
|-------|---|---------------------------|
| 1     | Vivekananda Mission Ashram, Vivek Nagar,<br>P.O. Chaitanpu, Dist. Purba, Midnapore, W.B.  | Dr. (Ms.) N. Subhra Sill  |
| 2     | Sadguru Seva Centre Janki Kund,<br>Chitrakut – 210204 Distt. Satna, M.P.  | Dr. B. K. Jain            |
| 3     | Azwani's Hospital<br>115, Berasia Road, Bhopal – 462 018, M.P.  | Dr. Jagdish Prasad Tiwari |
| 4     | Sahai Hospital & Research Centre<br>Jaipur – 302 004, Rajasthan   | Dr. Anshu Sahai           |
| 5     | Khairabad Eye Hospital, Swaroop Nahar,<br>Kanpur – 208 002, U.P.  | Dr. Suresh Kumar Goel     |
| 6     | Malabar Eye Hospital & Research Centre<br>Near Eranhipalam Post Office<br>Eranhipalam, Calicut – 673 006, Kerala  | Dr. K. S. Chandrakanth    |
| 7     | Netra Jyoti Seva Mandiram Veerayatan,<br>Nalanda, Rajgir – 803 116, Bihar   | Dr. Sadhvi Chetna         |
| 8     | Muzaffarpur Eye Hospital<br>Juran Chapara Road No. 2<br>Muzaffarpur – 842 001, Bihar  | Dr. Rajesh Kumar          |
| 9     | Drasti Netralaya, Dahod, Gujrat   | Dr. Mehul A Shah          |
| 10    | St. Stephans Hospital, Tis Hazari, Delhi  | Dr. Krishna Vaitheeswaran |
| 11    | Dr. Shroff's Charity Eye Hospital<br>5027, Kedar Nath Road, Daryaganj, Delhi  | Mr. Prem Kumar Singh      |
| 12    | I-Care Hospital Noida   | Mrs. Yogeshwari Bansal    |
| 13    | Vittala International, Institute of Ophthalmology<br>2 <sup>nd</sup> Cross Road, 2 <sup>nd</sup> Main, 7 <sup>th</sup> Block,<br>BSK 3 <sup>rd</sup> Stage Hoskerekhalli, Bangalore – 560 085 | Dr. Raveendra C. R. Rao   |
| 14    | Sr. Sankaradeva Nethralaya, Beltola<br>Guwahati – 781 028, Assam  | Dr. Kasturi Bhattacharjee |
| 15    | Sri Raja Ram Memorial Eye Hospital Society<br>Ramlila Maidan, Banda, Lucknow  | Mr. Ashok Shivhare        |
| 16    | Grewal Eye Institute<br>School of Optometry, Chandigarh   | Ms. Anuja R. Singh        |
| 17    | LV Prasad Eye Institute<br>Patia, Bhuvneshwar - 751024 Orissa   | Dr. Sujata Das            |



**INDIRA GANDHI NATIONAL OPEN UNIVERSITY**  
**CODES AND ADDRESSES OF REGIONAL CENTERS AND RECOGNISED REGIONAL CENTRES**

| S.NO. | NAME OF RCS  | CODE | ADDRESS  | OPERATIONAL AREA  |
|-------|--------------|------|--|---|
| 1.    | AGARTALA     | 26   | REGIONAL DIRECTOR<br>IGNOU REGIONAL CENTRE<br>M.B.B. COLLEGE COMPOUND<br>P.O. AGARTALA COLLEGE<br><b>AGARTALA-799004 TRIPURA</b><br>0381-2516715 / 25162660381-2516714<br>rd_agartala@rediffmail.com<br>rcagartala@ignou.ac.in   | STATE OF TRIPURA  |
| 2.    | AHMEDABAD    | 09   | REGIONAL DIRECTOR<br>IGNOU REGIONAL CENTRE<br>OPP. NIRMA INSTT OF TECHNOLOGY<br>SARKHEJ-GANDHINAGAR HIGHWAY CHHARODI<br><b>AHMEDABAD - 382481 GUJARAT</b><br>02717-242975 02717-241579 02717-241580<br>rcignouahd@yahoo.com<br>rcahmedbad@ignou.ac.in  | STATE OF GUJARAT, UNION<br>TERRITORY OF DAMAN, DIU,<br>DADRA & NAGAR HAVELI   |
| 3.    | AIZWAL       | 19   | REGIONAL DIRECTOR<br>IGNOU REGIONAL CENTRE<br>LAL BULAIA BUILDING M.G. ROADKHATLA<br>(NEAR CENTRAL YMA OFF.)<br><b>AIZWAL-796001 MIZORAM</b><br>0389-2311693, 0389-2311692, 0389-2311789<br>rd_aizwal@rediffmail.com<br>rcaizawl@ignou.ac.in   | STATE OF MIZORAM  |
| 4.    | ALIGARH      | 47   | REGIONAL DIRECTOR<br>IGNOU REGIONAL CENTRE<br>3/310 MARRIS ROAD<br><b>ALIGARH-202001, UTTAR PRADESH</b><br>0571-2700120, 2701365<br>ignousrcaligarh@yahoo.com<br>rcaligarh@ignou.ac.in   | DISTRICT OF UTTAR PRADESH<br>ETAH, KASGANJ, FIROZABAD, RAMPUR,<br>ALIGARH, HATHRAS, BADAUN, AGRA<br>BULANDSAHAR, MORADABAD, MANPURI,<br>ETAWAH, MATHURA & J P NAGAR |
| 5.    | BANGALORE    | 13   | REGIONAL DIRECTOR<br>IGNOU REGIONAL CENTRE<br>NSSS KALYANA KENDRA 293, 39TH CROSS,<br>8TH BLOCK JAYANAGAR<br><b>BANGALORE - 560 070 KARNATAKA</b><br>080-26654747 / 26657376080-26639711<br>080-26644848<br>ignourcblr@gmail.com<br>rcbangalore@ignou.ac.in  | STATE OF KARNATAKA EXCEPT THE<br>DISTRICTS DHARWAD, BELGAM &<br>UTTARA KARNATAKA  |
| 6.    | BHOPAL       | 15   | REGIONAL DIRECTOR<br>IGNOU REGIONAL CENTRE<br>SANCHI COMPLEX, 3RD FLOOR<br>OPP. BOARD OF SECONDARY EDN.<br>SHIVAJI NAGAR<br><b>BHOPAL - 462 016, MADHYA PRADESH</b><br>0755-2578455, 0755-2578454 0755-2578452<br>0755-2578454<br>ignoubhopal@rediffmail.com<br>ignou_bhopal@yahoo.com<br>rcbhopal@ignou.ac.in | STATE OF MADHYA PRADESH EXCEPT<br>FOR DISTRICTS MENTIONED UNDER<br>REGIONAL CENTRE JABALPUR   |
| 7.    | BHUBANESHWAR | 21   | REGIONAL DIRECTOR<br>IGNOU REGIONAL CENTRE<br>C - 1, INSTITUTIONAL AREA<br><b>BHUBANESHWAR - 751 013 ORISSA</b><br>0674-2301348/2301250/2301352 0674-2300349<br>rcbhubaneswar@ignou.ac.in  | STATE OF ORISSA (EXCEPT THE<br>DISTRICTS MENTIONED UNDER RC<br>KORAPUT & GAJAPATI)  |

| S.NO | NAME OF RCS | CODE | ADDRESS   | OPERATIONAL AREA  |
|------|-------------|------|---|---|
| 8.   | CHANDIGARH  | 06   | REGIONAL DIRECTOR<br>IGNOU REGIONAL CENTRE<br>SCO-208, Sector-14, Panchkula-134109<br>Haryana-0172-2590208<br>ignouch@gmail.com, rcchandigarh@ignou.ac.in   | CHANDIGARH U.T., DISTRICT<br>RUPNAGAR, PATIALA, MOHALI AND<br>FATEHGARH SAHIB OF PUNJAB AND<br>DISTRICT UNA OF HIMACHAL PRADESH<br>AMBALA, PANCHKULA AND DISTRICT OF<br>HARYANA   |
| 9.   | CHENNAI     | 25   | REGIONAL DIRECTOR<br>IGNOU REGIONAL CENTRE<br>C.I.T. CAMPUS TARAMANI<br><b>CHENNAI - 600 113 TAMILNADU</b><br>044-22541919 / 22542727044-22542121<br>044-22542828<br>rgnldirector@yahoo.in<br>rcchennai@ignou.ac.in   | STATE OF TAMILNADU THE FOLLOWING<br>DISTRICTS AND UNION TERRITORY OF<br>PONDICHEERY, CHENNAI, KANCHIPURAM,<br>VELLORE, CHENGAIPT, CUDDALORE,<br>VILLUPPURAM, SALEM, NAMAKKAL,<br>PERAMBALU & TIRUVALLORE                                    |
| 10.  | COCHIN      | 14   | REGIONAL DIRECTOR<br>IGNOU REGIONAL CENTRE<br>KALOOR <b>COCHIN - 682 017 KERALA</b><br>0484-2340203, 2348189, 230484-2533021<br>0484-2533021, 23308910484-2340204<br>igrc14@vsnl.net<br>rccochin@ignou.ac.in  | STATE OF KERALA EXCLUDING<br>DISTRICTS MENTIONED UNDER RC<br>TRIVANDRUM   |
| 11.  | DARBHANGA   | 46   | REGIONAL DIRECTOR<br>IGNOU REGIONAL CENTRE<br>LALIT NARAYAN MITHLA UNIV. CMPS<br>KAMESHWARANAGAR, NEAR CENTRAL BANK<br><b>DARBHANGA-846004 BIHAR</b><br>06272-253719 06272-251833<br>srcdarbhanga@yahoo.com<br>antrpathi29@rediffmail.com<br>rcdarbhanga@ignou.ac.in      | STATE OF BIHAR COVERING DISTRICTS<br>OF PASCHIM CHAMPARAN, GOPALGANJ,<br>SIWAN, SARAN, PURBI CHAMPARAN,<br>SHEOHAR, MUZAFFARPUR, VAISHALI,<br>SITAMARHI, MADHUBANI, DARBHANGA,<br>SAMASTIPUR, BEGUSARAI, SUPAUL,<br>SAHARSA, KHAGARIA       |
| 12.  | DEHRADUN    | 31   | REGIONAL DIRECTOR<br>IGNOU REGIONAL CENTRE<br>NANOOR KHERA, TAPOVAN RAIPUR ROAD<br><b>DEHRADUN - 248 001 UTTARANCHAL</b><br>0135-2789180 0135-2789205 0135-2789190<br>dimrianilk2002@yahoo.co.in<br>rcdehradun@ignou.ac.in  | STATE OF UTTARANCHAL, DISTRICTS OF<br>SARANPUR, MUZAFFARNAGAR, BIJNOR,<br>DEHRADUN, HARIDUAR, UTTARKASHI,<br>SRINAGAR, RUDRAPRAYAG, KOTDWAR,<br>GOPIESHWAR, BOAGESHWAR,<br>PITHORGRAH, CHAMPAWAT, ALMORA,<br>NANITAL, UDHAMSINGNAGAR & PURI |
| 13.  | DELHI 1     | 07   | REGIONAL DIRECTOR(I/C)<br>IGNOU REGIONAL CENTRE<br>PLOT NO. J-2/1, BLOCK-B1<br>MOHAN COOPERATIVE INDUSTRIAL ESTATE,<br>MATHURA ROAD, <b>NEW DELHI 110 044</b><br>011-26990082, 26990083 Fax : 26990084<br>EMAIL: rcdelhi1@ignou.ac.in<br>Website: www.ignourcdelhi1.ac.in | SOUTH DELHI, WEST DELHI,<br>DISTRICT FARIDABAD OF HARYANA   |
| 14.  | DELHI 2     | 29   | REGIONAL DIRECTOR-2<br>IGNOU REGIONAL CENTRE-2<br>GANDHI SMRITI & DARSHAN SAMITI<br><b>RAJGHAT, NEW DELHI - 110 002</b><br>011-23392375 / 23392376 / 23392377<br>011-23392374011-23392373<br>ignourd2@gmail.com<br>rcdelhi2@ignou.ac.in                                   | NORTH-EAST DELHI, EAST DELHI,<br>NORTH DELHI & CENTRAL DELHI  |
| 15.  | DELHI 3     | 38   | REGIONAL DIRECTOR<br>IGNOU REGIONAL CENTRE<br>F-634-636, PALAM EXTN, RAMPHAL CHOWK,<br>NEAR SECTOR-7, DWARKA, NEW DELHI-45<br>011-25088939, 25088944, 25088983<br>rcdelhi3@ignou.ac.in  | WEST DELHI AND DISTRICT OF<br>GURGAON OF HARYANA, OPERATED<br>FROM RC DELHI -1  |
| 16.  | GANGTOK     | 24   | REGIONAL DIRECTOR (I/C)<br>IGNOU REGIONAL CENTRE<br>31A, NATIONAL HIGHWAY, 5TH MILE,<br>BELOW MANIPAL HOSPITAL,<br>TADONG GANGTOK-737102 (SIKKIM)<br>03592-270923, 270364, 212501<br>rd_gangtok@rediffmail.com<br>rcgangtok@ignou.ac.in                                   | STATE OF SIKKIM   |

| S.NO | NAME OF RCS | CODE | ADDRESS  | OPERATIONAL AREA  |
|------|-------------|------|--|---|
| 17.  | GUWAHATI    | 04   | REGIONAL DIRECTOR<br>IGNOU REGIONAL CENTRE<br>HOUSE NO 71,GMC ROAD CHRISTIAN BASTI<br><b>GUWAHATI-781003, ASSAM</b><br>0361-2662879<br>grcignou@sancharnet.in<br>rcguwahati@ignou.ac.in  | STATE OF ASSAM  |
| 18.  | HYDERABAD   | 01   | REGIONAL DIRECTOR<br>IGNOU REGIONAL CENTRE<br>PLOT NO 207,KAVURI HILLS PHASE II<br>NEAR MADHAPUR POLICE STATION<br>JUBILEE HILLS (P.O)<br><b>HYDERABAD - 500 033</b><br><b>ANDHRA PRADESH</b><br>040-40266470,40266471,402266478<br>040-40266479<br>hyd2_ignourch@sancharnet.in<br>rchyderabad@ignou.ac.in                       | STATE OF ANDHRA PRADESH EXCEPT<br>DISTRICTS COVERED UNDER RC<br>VIJAYAWADA  |
| 19.  | IMPHAL      | 17   | REGIONAL DIRECTOR<br>IGNOU REGIONAL CENTRE<br>ASHA JINA COMPLEX NORTH, AOC<br><b>IMPHAL – 795001 MANIPUR</b><br>0385- 2421190 ,24211910385-2421192<br>385-2421192<br>ignouimphal@rediffmail.com<br>rcimphal@ignou.ac.in ignouimp@man.nic.in  | STATE OF MANIPUR  |
| 20.  | ITANAGAR    | 03   | REGIONAL DIRECTOR<br>IGNOU REGIONAL CENTRE<br>'HORNHILL COMPLEX'C' SECTOR<br>(NEAR CENTRAL SCH.) NAHARLAGUN<br><b>ITANAGAR -791110 ARUNACHAL PRADESH</b><br>0360-2247536 / 22475380360-2247537<br>rd_itanagar@rediffmail.com<br>ignou_itanagar@yahoo.com<br>rd_itanagar@rediffmail.com   | STATE OF ARUNACHAL PRADESH  |
| 21.  | JABALPUR    | 41   | REGIONAL DIRECTOR<br>IGNOU REGIONAL CENTRE<br>2ND FLOOR, RAJSHEKHAR BHAVAN, RANI<br>DURGAVATI VISHVAVIDYALAYA CAMPUS,<br>PACHPEDHI, <b>JABALPUR - 482001</b><br><b>MADHYA PRADESH</b><br>0761-2609269,65335690761-2600411<br>0761-2609919<br>ignoujabalpur@hotmail.com<br>rcjabalpur@ignou.ac.in<br>website:www.ignoujabalpur.in | STATE OF MP COVERING DISTRICTS OF<br>JABALPUR, NARSIMHAPUR,<br>CHHINDWARA, SEONI, BALAGHAT,<br>MANDLA, DINDORI, SHAHDOL, UMARIA,<br>KATNI, SIDHI, SINGRAULI & ANUPPUR |
| 22.  | JAIPUR      | 23   | REGIONAL DIRECTOR<br>IGNOU REGIONAL CENTRE<br>70/79, SECTOR-7 PATEL MARG, MANSAROVAR<br><b>JAIPUR - 302 020 RAJASTHAN</b><br>0141-2785750 0141-2274292 0141-2784043<br>ignou-raj@.nic.in<br>rcjaipur@ignou.ac.in   | STATE OF RAJASTHAN  |
| 23.  | JAMMU       | 12   | REGIONAL DIRECTOR<br>IGNOU REGIONAL CENTRE<br>SPMR COLLEGE OF COMMERCE<br>CANAL ROAD,<br><b>JAMMU - 180 001 , JAMMU &amp; KASHMIR</b><br>0191-25465290191-25795720191-2546995<br>jammurc12@rediffmail.com<br>rcjammu@ignou.ac.in   | STATE OF JAMMU & KASHMIR<br>(JAMMU REGION)  |

| S.NO | NAME OF RCS | CODE | ADDRESS   | OPERATIONAL AREA  |
|------|-------------|------|---|---|
| 24.  | JORHAT      | 37   |   | OPERATED FROM RC GUWAHATI   |
| 25.  | KARNAL      | 10   | REGIONAL DIRECTOR<br>IGNOU REGIONAL CENTRE<br>OLD GOVT. COLLEGE CAMPUS<br>RAILWAY STATION ROAD,<br><b>KARNAL - 132 001, HARYANA</b><br>0184-2271514 0184-22600750184-2255738<br>ignourck10@bsnl.in<br>rckarnal@ignou.ac.in  | STATE OF HARYANA (EXCEPT THE DISTRICTS OF PANCHKULA AND AMBALA)   |
| 26.  | KHANNA      | 22   | REGIONAL DIRECTOR<br>IGNOU REGIONAL CENTRE<br>I.T.I. BUILDING BULEPUR<br>(DISTRICT LUDHIANA)<br><b>KHANNA – 141401 PUNJAB</b><br>01628- 229994/229993/237361/238284<br>ignoukhanna@yahoo.co.in<br>rckhanna@ignou.ac.in  | STATE OF PUNJAB (EXCEPT DISTRICTS RUPNAGAR,PATIALA,MOHALI AND FATEHGARH SAHIB )   |
| 27.  | KOHIMA      | 20   | REGIONAL DIRECTOR<br>IGNOU REGIONAL CENTRE<br>NEAR MOUNT HERMON SCHOOL<br>DON BOSCO HR. SEC. SCHOOL ROAD,<br>KENDOUZOV, KOHIMA-797001<br>0370-2260366, 2260147, 2260216<br>rd_kohima@rediffmail.com<br>rckohima@ignou.ac.in   | STATE OF NAGALAND   |
| 28.  | KOLKATA     | 28   | REGIONAL DIRECTOR<br>IGNOU REGIONAL CENTRE<br>BIKASH BHAWAN, 4TH FLOOR<br>NORTH BLOCK, SALT LAKE, BIDHAN NAGAR<br><b>KOLKATA - 700 091 WEST BENGAL</b><br>033-23349850 / 23592719/ 23589323<br>(RCL) 033-23347576<br>ignourd28@yahoo.com, rd28cal@rediffmail.com<br>rckolkata@ignou.ac.in | STATE OF WEST BENGAL (EXCEPT THE DISTRICTS MENTIONED AGAINST RC SILIGURI)   |
| 29.  | KORAPUT     | 44   | REGIONAL DIRECTOR<br>IGNOU REGIONAL CENTRE<br>DISTRICT AGRICULTURE OFFICE RD<br>BEHIND PANCHAYAT BHAVAN<br><b>KORAPUT – 764020 ORISSA</b><br>06852-252982 06852-251535<br>ignou_koraput@rediffmail.com<br>rckoraput@ignou.ac.in   | KORAPUT, NABARANGPUR, RAYAGADA, MALKANAGIRI, BALANGIR, SONEPUR, KALAHANDI, NUAPADA, BOUDH, PHULBANI (PART OF ORISSA) GAJAPATI, SRIKAKULAM (PART OF AP), DANTEWADA, BASTAR (PART OF CG)                  |
| 30.  | LUCKNOW     | 27   | REGIONAL DIRECTOR<br>IGNOU REGIONAL CENTRE<br>B-1/33, SECTOR - ALIGANJ<br><b>LUCKNOW - 226 024 UTTAR PRADESH</b><br>0522-2745114,09417966540522-2762410<br>(RCL/ 2364453 0522-2364889<br>ignoulko@sancharnet.in<br>rclucknow@ignou.ac.in  | STATE OF UTTAR PRADESH (EXCEPT THE DISTRICTS UNDER RC VARANASI,RC ALIGARH AND RC NOIDA)   |
| 31.  | MADURAI     | 43   | REGIONAL DIRECTOR<br>IGNOU REGIONAL CENTRE<br>CSI INSTITUTIONAL CAMPUS<br>TPK ROAD (NH -7) PAUMAALAI<br><b>MADURAI - 625004 TAMIL NADU</b><br>0452-2380733,2380387, 0452-2370588<br>ignoumadurai@yahoo.co.in, rcmadurai@ignou.ac.in   | FOLLOWING DISTRICTS OF TAMIL NADU COIMBATORE, NILGRIS, ERODE, KARUR, THANJAVUR, MADURAI, DINDIGUL, TENI, VIRUDUNAGAR, RAMANATHAPURAM, SIVAGANGA, PUDUKKUTTAI, THIRUPPUR TIRUNELVELI, TUTICORIN & TRICHI |

| S.NO | NAME OF RCS | CODE | ADDRESS  | OPERATIONAL AREA  |
|------|-------------|------|--|---|
| 32.  | MUMBAI      | 34   | REGIONAL DIRECTOR<br>IGNOU REGIONAL CENTRE<br>OM LEVA VIKAS NIKETAN, NANEPADA ROAD,<br>MULUND (E)<br><b>MUMBAI - 400081 MAHARASHTRA</b><br>022-25633159<br>ignourcmumbai@gmail.com<br>rcmumbai@ignou.ac.in   | FOUR DISTRICTS OF MAHARASHTRA :<br>MUMBAI,THANE,RAIGARH AND<br>RATNAGIRI.   |
| 33.  | NAGPUR      | 36   | REGIONAL DIRECTOR<br>IGNOU REGIONAL CENTRE<br>GYAN VATIKA,<br>14, HINDUSTAN COLONY,<br>AMARAVATI ROAD,<br><b>NAGPUR 440033 MAHARASHTRA</b><br>0712-2022000, 09657866936 (MOB)<br>rcnagpur@ignou.ac.in  | STATE OF MAHARASHTRA COVERING<br>DISTRICTS AMRAVATI, BULDHANA, AKOLA<br>WASHIM, HINGOLI, PARBHANI, NANDED,<br>YAVATMAL ,WARDHA, CHANDRAPUR,<br>NAGPUR, BHANDARA, GONDIA,<br>GADCHIROLI (14 DISTRICTS) |
| 34.  | NOIDA       | 39   | REGIONAL DIRECTOR<br>IGNOU REGIONAL CENTRE<br>rcnoida@ignou.ac.in<br>GANDHI SMRITI & DARSHAN SAMITI<br><b>RAJGHAT, NEW DELHI - 110 002</b><br>011-23392375 / 23392376 / 23392377<br>011-23392374011-23392373<br>ignourd2@gmail.com<br>rcdelhi2@ignou.ac.in | NOIDA, GREATER NOIDA, GHAZIABAD,<br>G.B.NAGAR, MEERUT & BAGPAT OF<br>UTTAR PRADESH OPERATED FROM<br>RC DELHI 2 NORTH-EAST DELHI, EAST<br>DELHI, NORTH DELHI & CENTRAL DELHI                           |
| 35.  | PANAJI      | 08   | REGIONAL DIRECTOR<br>IGNOU REGIONAL CENTRE<br>BEHIND CHODANKAR HOSPITAL, NEAR P&T<br>STAFF QUARTERS OF MAPUSA-<br>PANAJI ROAD, <b>POVORIM -403521 GOA</b><br>0-9444024242 MOB0832-2462315<br>msparthasarathy@yahoo.com                                     | STATE OF GOA & THREE ADJOINING<br>DISTRICTS OF KARNATAKA i.e<br>DHARWARD, BELGAUM, UTTARA<br>KANNAD & SINDHUDURG<br>(DISTRICTS OF MAHARASHTRA)  |
| 36.  | PATNA       | 05   | REGIONAL DIRECTOR<br>IGNOU REGIONAL CENTRE<br>2ND FLOOR, BISCOMAUN TOWER WEST<br>GANDHI MAIDAN,<br><b>PATNA - 800 001 BIHAR</b><br>0612-2221538/ 22215410612-2221539<br>rcpatna@gmail.com, rc05patna@gmail.com<br>ignourcpatna@gmail.com                   | STATE OF BIHAR EXCEPT FOR THE<br>DISTRICTS UNDER JURISDICTION<br>OF RC-DARBHANGA  |
| 37.  | PORT BLAIR  | 02   | REGIONAL DIRECTOR<br>IGNOU REGIONAL CENTRE<br>JNRM CAMPUS, <b>PORT BLAIR-744104</b><br><b>ANDAMAN &amp; NICOBAR ISLANDS</b><br>03192-242888,230111<br>rc_portblair@rediffmail.com<br>rcportblair@ignou.ac.in   | ANDAMAN & NICOBAR ISLANDS   |
| 38.  | PUNE        | 16   | REGIONAL DIRECTOR<br>IGNOU REGIONAL CENTRE<br>1ST FLOOR, MSFC BUILDING 270,<br>SENAPATI BAPAT ROAD,<br><b>PUNE - 411 016 MAHARASHTRA</b><br>020-256671867 020-25671864<br>ignourcpune42@vsnl.net<br>rcpune@ignou.ac.in                                     | STATE OF MAHARASHTRA NANDURBAR<br>DHULE, JALGAON, AURANGABAD, NASIK,<br>JALNA, AHMADNAGAR ,BID, PUNE,<br>OSMANABAD, SOLAPUR, SANGLI,<br>SATARA & KOLHAPUR (14 DISTRICTS)                              |
| 39.  | RAIPUR      | 35   | REGIONAL DIRECTOR<br>IGNOU REGIONAL CENTRE<br>REST HOUSE & E.M. OFFICE HALL<br>SECTOR – 1, SHANKAR NAGAR<br><b>RAIPUR – 492007 CHATTISGARH</b><br>0771-2428285 / 5056508 0771-2445839<br>0771-2445839<br>rrcignou@cg.nic.in,<br>rcraipur@ignou.ac.in       | STATE OF CHHATTISGARH EXCEPT<br>DISTRICTS OF DANTEWADA & BASTAR   |

| S.NO | NAME OF RCS | CODE | ADDRESS   | OPERATIONAL AREA  |
|------|-------------|------|---|---|
| 40.  | RAJKOT      | 42   | REGIONAL DIRECTOR<br>IGNOU REGIONAL CENTRE<br>SAURASHTRA UNIVERSITY CAMPUS<br><b>RAJKOT – 360005 GUJARAT</b><br>0281-2572988<br>subrcrajkot@yahoo.co.in<br>rcrajkot@ignou.ac.in<br>website:www.ignourajkot.org  | STATE OF GUJRAT COVERING THE<br>DISTRICTS OF RAJKOT,KACHCHH,<br>JAMNAGAR, PORBANDER, JUNAGADH,<br>AMRELI, BHAVNAGAR, SURENDRANAGAR<br>& DIN     |
| 41.  | RANCHI      | 32   | REGIONAL DIRECTOR<br>IGNOU REGIONAL CENTRE<br>457/A, ASHOK NAGAR,<br><b>RANCHI – 834022 JHARKHAND</b><br>0651-2244688,2244699<br>0651-22446770651-2244400<br>ignouranchi@yahoo.com<br>rdanchi@ignou.ac.in   | STATE OF JHARKHAND  |
| 42.  | SHILLONG    | 18   | REGIONAL DIRECTOR<br>IGNOU REGIONAL CENTRE<br>SUNNY LODGE NONGTHYMMAI<br>NON SHILLIANG<br><b>SHILLONG - 793 003 MEGHALAYA</b><br>0364-2521117 0364-2521271 0364-2521271<br>ignou18@sancharnet.in<br>rd_shillong@rediffmail.com                              | STATE OF MEGHALAYA  |
| 43.  | SHIMLA      | 11   | REGIONAL DIRECTOR<br>IGNOU REGIONAL CENTRE<br>CHAUHAN NIWAS BUILDING,KHALINI<br><b>SHIMLA - 171 002 HIMACHAL PRADESH</b><br>0177-2624613,2624611,2625843/ 2624612<br>0177-2624611<br>sml_ignoures@sancharnet.in<br>dbnegi@gmail.com<br>rcshimla@ignou.ac.in | STATE OF HIMACHAL PRADESH<br>(EXCEPT DISTIRT UNA)   |
| 44.  | SILIGURI    | 45   | REGIONAL DIRECTOR<br>IGNOU REGIONAL CENTRE<br>NETAJI MORE SUBHAS PALLY<br><b>SILIGURI – 734001 WEST BENGAL</b><br>0353-2526818 0353-2526819<br>ignourcsiliguri@yahoo.com<br>rcsiliguri@ignou.ac.in  | STATE OF WEST BENGAL COVERING<br>DISTRICTS OF JALPAIGURI, DARJILING,<br>KOCHBIHAR, UTTAR DINAJPUR,<br>DAKSHIN, DINAJPUR, MALDAH<br>(PART OF WB) |
| 45.  | SRINAGAR    | 30   | REGIONAL DIRECTOR<br>IGNOU REGIONAL CENTRE<br>MANTOO HOUSE, RAJ BAGH NEAR MASJID<br>AL-FAROOQ,<br><b>SRI NAGAR - 190 008 JAMMU &amp; KASHMIR</b><br>0194-2311251 0194-2311258 0194-2311259<br>ignousgr@hotmail.com<br>rcsrinagar@ignou.ac.in                | STATE OF JAMMU & KASHMIR<br>(SRINAGAR & LADAKH REGION)  |
| 46.  | TRIVANDRUM  | 40   | REGIONAL DIRECTOR<br>IGNOU REGIONAL CENTRE<br>MEPRAM MANSION, CHEKKALAMUKKU<br>SREEKARIYAM,<br><b>TRIVANDRUM -695017 KERALA</b><br>0944750581 (MOB)<br>ignourctrivandrum@gmail.com<br>rctrivandrum@ignou.ac.in  | KANYAKUMARI, DISTRICT OF TAMIL<br>NADU & THIRUVANANTHAPURAM,<br>KOLLAM & PATHANAMTHITTA<br>(DISTRICTS OF KERALA)                                |



| S.NO | NAME OF RCS   | CODE | ADDRESS   | OPERATIONAL AREA   |
|------|---------------|------|---|--|
| 47.  | VARANASI      | 48   | REGIONAL DIRECTOR<br>IGNOU REGIONAL CENTRE<br>GANDHI BHAWAN, B.H.U. CAMPUS<br><b>VARANASI-221005 UTTAR PRADESH</b><br>0542-2368022, 23686220522-2364893<br>0542-2317383<br>ignousrc.vns@gmail.com<br>rcvaranasi@ignou.ac.in                     | DISTRICTS OF AMBEDKAR NAGAR,<br>SANTKABIRNAGAR, MAHARAJGANJ,<br>JAUNPUR, BALLIA, AZAMGARH,<br>GORAKHPUR, DEORIA, KUSHINAGAR,<br>SANT RAVIDAS NAGAR, MIRZAPUR,<br>VARANASI, GHAZIPUR,<br>MAUNATHBHANJAN, CHANDAUL,<br>SONBHADRA |
| 48.  | VIJAYAWADA    | 33   | REGIONAL DIRECTOR<br>IGNOU REGIONAL CENTRE<br>1ST FLOOR, SKPVV, HINDU HIGH SCHOOL<br>KOTHAPETHA,<br><b>VIJAYAWADA 520 001 ANDHRA PRADESH</b><br>0866-256595 0866-2565253 0866-2565353<br>ignourcvijaywada@gmail.com<br>rcvijayawada@ignou.ac.in | STATE OF ANDHRA PRADESH COVERING<br>THE DISTRICTS OF VIZAINAGARAM,<br>VISAKHAPTNAM, EAST GODAVARI, WEST<br>GODAVARIKHAMMAM, KRISHNA,<br>GUNTUR, PRAKASHAM, NELLOR,<br>SRIKAKULAM AND CHITTOOR                                  |
| 49.  | RAGHUNATHGANJ | 50   | DR S RAJA RAO<br>REGIONAL DIRECTOR<br>IGNOU REGIONAL CENTRE<br>AMIYABALA BHAWAN<br>VILL SANYASIDANGA PO BARALA<br>PS RAGHUNATHGANJ<br>DIST MURSHIDABAD, WEST BENGAL<br>09434731514, 05222364889<br>srajarao@ignou.ac.in                         | DISTRICT MURSHIDABAD MALDA<br>AND BIRBHUM  |

### ARMY RECOGNIZED REGIONAL CENTRE

| S.NO | NAME OF RCS  | CODE | ADDRESS   | OPERATIONAL AREA     |
|------|--------------|------|---|----------------------|
| 1    | KOLKATA      | 51   | REGIONAL DIRECTOR<br>IGNOU ARMY RECOG. REG. CENTRE<br>COL. EDUCATION FORT WILLIAM HQ<br>EASTERN COMMAND,<br><b>KOLKATA - 700021</b><br><b>WEST BENGAL</b><br>033-22222668<br>rc51army_ec@yahoo.co.in    | EASTERN COMMAND AREA |
| 2    | CHANDIMANDIR | 52   | REGIONAL DIRECTOR<br>IGNOU ARMY RECOG. REG. CENTRE<br>COL. EDUCATION HQ WESTERN COMMAND<br><b>CHANDIMANDIR-134107</b><br><b>HARYANA</b><br>0172-2589423 (CIVIL) 0712-2589423<br>iaeprc52@rediffmail.com | WESTERN COMMAND AREA |
| 3    | LUCKNOW      | 53   | REGIONAL DIRECTOR<br>IGNOU ARMY RECOG. REG. CENTRE<br>BRIG-( EDN)IAEP, HQ CENTRAL COMMAND<br><b>LUCKNOW - 226002</b><br><b>UTTAR PRADESH</b><br>0522-2482968/2292670<br>iaeprcc53@yahoo.co.in           | CENTRAL COMMAND AREA |

|   |          |    |  |                       |
|---|----------|----|--|-----------------------|
| 4 | PUNE     | 54 | COL ARUN SARIN<br>REGIONAL DIRECTOR<br>IGNOU ARMY RECOG. REG. CENTRE<br>COL. EDUCATIONH Q SOUTHERN COMMAND<br><b>C/O 56 APO</b><br>020-26102668020-26102670                                | SOUTHERN COMMAND AREA |
| 5 | UDHAMPUR | 55 | REGIONAL DIRECTOR<br>IGNOU ARMY RECOG. REG. CENTRE<br>COL. EDUCATION, UTTAR KAMAN<br>MUKHYALAYA C/O 56APO, HQ NORTHERN<br>COMMAND,<br><b>UDHAMPUR, JAMMU &amp; KASHMIR</b><br>01992-242486 | NORTHERN COMMAND AREA |
| 6 | JAIPUR   | 56 | REGIONAL DIRECTOR<br>IGNOU ARMY RECOG. REG.CENTRE<br>EDUCATION BRANCH,<br><b>JAIPUR, RAJASTHAN</b><br>0141-2386 ETN 2668   | SOUTH WESTERN COMMAND |

### NAVY RECOGNIZED REGIONAL CENTRES

| S.NO | NAME OF RCS   | CODE | ADDRESS   | OPERATIONAL AREA          |
|------|---------------|------|---|---------------------------|
| 1    | NEW DELHI     | 71   | REGIONAL DIRECTOR (I/C)<br>IGNOU NAVY RECOG. REG. CENTRE<br>DIRECTORATE OF NAVAL EDUCATION<br>INTEGRATED HQS.MINISTRY OF DEF WEST<br>BLOCK.5,IIND FLR,WING-II, RK PURAM,<br><b>NEW DELHI - 110066 DELHI</b><br>011-26194686 ,26185299011-26105067<br>inepdelhi@rediffmail.com | NAVAL HQS                 |
| 2    | MUMBAI        | 72   | REGIONAL DIRECTOR<br>IGNOU NAVY RECOG. REG. CENTRE<br>HQ. WESTERN NAVAL COMMAND<br>SHAHID BHAGAT SINGH MARG<br><b>MUMBAI - 400023 MAHARASHTRA</b><br>022-22688245022-22665458<br>inepm@rediffmail.com   | HQ WESTERN NAVAL COMMAND  |
| 3    | VISAKHAPATNAM | 73   | REGIONAL DIRECTOR<br>IGNOU NAVY RECOG. REG. CENTRE<br>HQ EASTERN NAVAL COMMAND<br><b>VISAKHAPATNAM - 530014</b><br><b>ANDHRA PRADESH</b><br>0891-28122840891-2515834<br>inepu@hotmail.com   | HQ EASTERN NAVAL COMMAND  |
| 4    | KOCHI         | 74   | REGIONAL DIRECTOR<br>IGNOU NAVY RECOG. REG. CENTRE<br>NAVAL BASEHQ SOUTHERN NAVAL<br>COMMAND, <b>KOCHI - 682004 KERALA</b><br>0484-2662515,266221026610070484-2666194<br>inepk@rediffmail.com   | HQ SOUTHERN NAVAL COMMAND |

### ASSAM-RIFLES RECOGNIZED REGIONAL CENTRES

| S.NO | NAME OF RCS | CODE | ADDRESS   | OPERATIONAL AREA |
|------|-------------|------|---|------------------|
| 1    | SHILLONG    | 81   | REGIONAL DIRECTOR<br>IGNOU ASSAM-RIFLES RECOG. R.C.<br>DIRECTORATE GENERAL ASSAMRIFLES<br>(DGAR)LAITUMUKHRAH,<br><b>SHILLONG - 11 MEGHALAYA</b><br>0364-705530/ 7055640364-705564<br>hqdgar@hotmail.com | COMMAND AREA     |

## STATE CODES

| CODE | DESCRIPTION                            |
|------|--|
| 01   | Andhra Pradesh                         |
| 02   | Andaman & Nicobar Islands (UT)         |
| 03   | Arunachal Pradesh                      |
| 04   | Assam                                  |
| 05   | Bihar                                  |
| 06   | Chandigarh (UT)                        |
| 07   | Delhi                                  |
| 08   | Goa                                    |
| 09   | Gujarat                                |
| 10   | Haryana                                |
| 11   | Himachal Pradesh                       |
| 12   | Jammu & Kashmir                        |
| 13   | Karnataka                              |
| 14   | Kerala                                 |
| 15   | Madhya Pradesh                         |
| 16   | Maharashtra                            |
| 17   | Manipur                                |
| 18   | Meghalaya                              |
| 19   | Mizoram                                |
| 20   | Nagaland                               |
| 21   | Orissa                                 |
| 22   | Punjab                                 |
| 23   | Rajasthan                              |
| 24   | Sikkim                                 |
| 25   | Tamil Nadu                             |
| 26   | Tripura                                |
| 27   | Uttar Pradesh                          |
| 28   | West Bengal                            |
| 29   | Dadra & Nagar Haveli, Daman & Diu (UT) |
| 30   | Lakshadweep (UT)                       |
| 31   | Pondicherry (UT)                       |
| 33   | C/o 99 APO                             |
| 34   | Learners Abroad                        |
| 35   | Chattisgarh                            |
| 36   | Jharkhand                              |
| 37   | Uttaranchal                            |

## EDUCATIONAL QUALIFICATION CODE

| CODE       | DESCRIPTION   |
|------------|---|
| <b>001</b> | Matriculation/SSC   |
| <b>002</b> | 10+2 or Equivalent  |
| <b>003</b> | Diploma in Engineering  |
| <b>004</b> | Graduation in Engineering   |
| <b>005</b> | Graduation or Equivalent  |
| <b>006</b> | Post Graduation or Equivalent                                     |
| <b>007</b> | Doctoral or Equivalent  |
| <b>008</b> | BPP from IGNOU  |
| <b>009</b> | Bachelor of Library Information Science                           |
| <b>010</b> | Master of Library & Information Science                           |
| <b>011</b> | PG Diploma in Dietetics and Public Health Nutrition or equivalent |

## LIST OF BOARD CODES (FOR 10 +2)

| Sl. No. | Code of Board | Board (Abbr) | Year from which 10+2 in effect | Name of the Board  |
|---------|---------------|--------------|--------------------------------|--|
| 1.      | <b>0101</b>   | ABIE         | ALWAYS                         | Board of Intermediate Education, Andhra Pradesh                            |
| 2.      | <b>0401</b>   | AHSL         | 1986                           | Assam Higher Secondary Education Council                                   |
| 3.      | <b>0501</b>   | BIEC         | ALWAYS                         | Bihar Intermediate Education Council                                       |
| 4.      | <b>0701</b>   | CBSE         | 1979                           | Central Board of Secondary Education, New Delhi                            |
| 5.      | <b>0702</b>   | ICSE         | 1979                           | Council for the Indian School (Certificate Exam), New Delhi                |
| 6.      | <b>0703</b>   | NOS/NIOS     | 1991                           | National Institute of Open Schooling, Delhi<br>(Passed with five subjects) |
| 7.      | <b>0801</b>   | GBSE         | 1978                           | Goa, Daman & Diu Board of Sec. & Higher Sec. Ed.                           |
| 8.      | <b>0901</b>   | GSEB         | 1978                           | Gujarat Secondary Education Board  |
| 9.      | <b>1001</b>   | HBSE         | 1987                           | Haryana Board of School Education  |
| 10.     | <b>1101</b>   | HPBE         | 1988                           | Himachal Pradesh Board of School Education                                 |
| 11.     | <b>1201</b>   | JKSS         | 1980                           | J&K State Board of School Education (Summer)                               |
| 12.     | <b>1202</b>   | JKSW         | 1980                           | J&K State Board of School Education (Winter)                               |
| 13.     | <b>1301</b>   | KBPE         | 1971                           | Board of Pre-University Education, Karnataka                               |
| 14.     | <b>1401</b>   | KU           | 1966                           | University of Kerala   |
| 15.     | <b>1501</b>   | BSMP         | 1988-89                        | Board of Secondary Education, MP   |
| 16.     | <b>1601</b>   | MSBE         | 1978                           | Maharashtra State Board of Secondary Education<br>& Higher Secondary Board |
| 17.     | <b>1701</b>   | MBSE         | 1980                           | Board of Secondary Education, Manipur                                      |
| 18.     | <b>1901</b>   | MZSE         | 1980                           | Mizoram Board of Secondary Education                                       |
| 19.     | <b>2001</b>   | NBSE         | 1980                           | Nagaland Board of Secondary Education                                      |
| 20.     | <b>2101</b>   | CHSE         | 1980                           | Council of Higher Secondary Education, Orissa                              |
| 21.     | <b>2201</b>   | PSEB         | 1988                           | Punjab School Education Board  |
| 22.     | <b>2301</b>   | RBSE         | 1986                           | Rajasthan Board of Secondary Education                                     |
| 23.     | <b>2501</b>   | TNSB         | 1978                           | Board of Secondary & Higher Secondary Exam., Tamil Nadu                    |
| 24.     | <b>2601</b>   | TBSE         | —                              | Tripura Board of Secondary Education                                       |
| 25.     | <b>2701</b>   | BHSI         | ALWAYS                         | Board of High School & Intermediate Edu., U.P.                             |
| 26.     | <b>2802</b>   | WBSE         | 1978                           | West Bengal Council of Higher Secondary Education                          |
| 27.     | <b>3601</b>   | JAC          | 2006                           | Jharkhand Academic Council, Ranchi   |
| 28.     | <b>8888</b>   | DDDD         | —                              | A recognised three/two year Diploma/<br>Certificate after 10th Class       |
| 29.     | <b>9999</b>   | XXXX         | —                              | Not listed in this list.   |

| Sl. No. | Code of Board | Board (Abbr) | Year from Board(Abbr) which 10+2 vocational stream in effect | Name of the Board                    |
|---------|---------------|--------------|--|--------------------------------------|
| 1.      | <b>1901</b>   | MZSE         | 2001   | Mizoram Board of Secondary Education |

## BANKS AND BRANCHES DESIGNATED TO COLLECT THE FEE IN CASH FROM IGNOU STUDENT

### INDIAN BANK

- |  |  |
|--|--|
| <p><b>1. New Delhi</b><br/>106.&amp; 107 Aurbindo Place, Hauz Khas,<br/>New Delhi-110016<br/>011-26963543, 26562973.</p> <p>G-27, DDA Community Centre,<br/>Near Sonia Cinema, Vikas Puri,<br/>New Delhi-110018,<br/>011-2597250</p> <p>1336, Arya Samaj Road, Karol Bagh,<br/>New Delhi-110005<br/>011-25721486, 25739821</p> <p>D-1/1, Rana Partap Bagh,<br/>New Delhi-110007.<br/>011-27002540, 27231401</p> <p>33, Partap Nagar, Mayur Vihar, Phase-I,<br/>New Delhi-110092<br/>011-22750845, 22757391</p> | <p><b>7. Thiruvanthapuram</b><br/>P.B. No. 45, Indian Bank Towers,<br/>M.G. Road,<br/>Thiruvanthapuram, Kerala-695001<br/>Ph.: 0471-2461058, 2471378</p> |
| <p><b>2. Chennai</b><br/>41-42, First Main Road, Gandhi Nagar,<br/>Adyar, Chennai-600020<br/>Ph.: 044-24912616, 24413430</p>   | <p><b>8. Pondichery</b><br/>288, M.G. Road, Pondichery-605001<br/>Ph.: 0413-2336403, 2221299</p>   |
| <p><b>3. Hyderabad</b><br/>3-6-943/2A, 1st Floor,<br/>Narayanguda, Hyderabad,<br/>Andhra Pradesh-500029<br/>Ph.: 23224575, 23225373</p>  | <p><b>9. Ahmedabad</b><br/>P.B. No. 275, Mission Road, Bhandra,<br/>Ahemdabad-380001<br/>Ph.: 079-25506641, 25506583</p>                                 |
| <p><b>4. Pune</b><br/>495, Mantri Heights, Shaniwar Peth,<br/>Pune, Maharastra-411030<br/>Ph.: 020-24452673. 24450907</p>  | <p><b>10. Jaipur</b><br/>Mirza Ismail Road, Jaipur, Rajasthan-<br/>302001<br/>Ph.: 0141-2366603, 2368204</p>   |
| <p><b>5. Patna</b><br/>P.B. No. 627, Jhauganj, Patna City,<br/>Bihar-800008<br/>Ph.: 0612-2265814</p>  | <p><b>11. Chandigarh</b><br/>SCO 38-39, Madhya Marg, Sector 7C,<br/>Chandigarh-160019<br/>Ph.: 0172-2793225</p>  |
| <p><b>6. Karnal</b><br/>Guru Tegh Bahadur Market,<br/>G.T. Road, Karnal, Haryana-132001<br/>Ph.: 0184-2272139</p>  | <p><b>12. Mumbai</b><br/>11/12, Madhav Nagar, S V Road,<br/>Andheri (West), Mumbai, Maharashtra-<br/>400058<br/>Ph.: 022-26205900. 26205800</p>          |
|  | <p><b>13. Guwahati</b><br/>S.S. Road, Lakhotia, Guwahat, Kamrup<br/>Distt.,<br/>Assam-781001<br/>Ph.: 0361-2540529, 2548805</p>                          |
|  | <p><b>14. Lucknow</b><br/>1-2, Ashok Mart, Lucknow,<br/>Uttar Pradesh-462001<br/>Ph.: 0522-2280496, 2280098</p>  |
|  | <p><b>15. Bhopal</b><br/>473, Hamidia Road, Bhopal<br/>Madhya Pradesh- 462001<br/>Ph.: 0755-2730045</p>  |



- |   |  |
|---|--|
| <p><b>16. Shimla</b><br/>17, The Mall, Shimla,<br/>Himachal Pradesh-171001<br/>Ph.: 0177-2658133</p> <p><b>17. Kolkata</b><br/>P.B. No. 717,3/1, R.N. Mukharjee Road,<br/>Shree Ram Chambers, Koldata,<br/>West Bengal-700001<br/>Ph.: 033-22482597, 22484325</p> <p><b>18. Bhubneshwar</b><br/>32, Janpath, Ashok Nagar, Unit-II,<br/>Bhubneshwar,<br/>Khurda Distt., Orrissa-751009<br/>Ph.: 0674-2531645</p> <p><b>19. Bangalore City</b><br/>P.B. 9725, 10 K.G. Road, Bangalore<br/>Ph.: 080-22263162, 2223163,22263164</p> | <p><b>20. Khanna</b><br/>G T Road (Near Old Bus Stand),<br/>Khanna, Ludhiana<br/>District, Punjab-141401<br/>Tel: 01628-334817</p> <p><b>21. Shillong</b><br/>G. S. Road Burra Bazaar, Shillong,<br/>East Khasi Hills, Meghalaya 793002<br/>Tel: 0364-2243408</p> <p><b>22. Agartala</b><br/>Amulya Market, Mantribari Road,<br/>Agartala,<br/>West Tripura Dist, Tripura<br/>Tel:0381-2326642</p> <p><b>23. Siliguri</b><br/>Hillcart Road,<br/>Air View Moor Siliguri.</p> |
|---|--|

## IDBI BANK

- |   |  |
|---|--|
| <p><b>1. Ahmedabad</b><br/>Lal Bunglow. Off. C.G. Road,<br/>Ahmedabad-380006<br/>Ph.: 079-26431902/1296</p> <p>23-25, Ruda Square, Nr. Judges Bunglow,<br/>Bodakdev, Ahmedabad-380015<br/>Ph.: 079-26872345, 268730024</p> <p>Aishwarya Complex, Yash Kunj Society,<br/>Prabhat Chowk, Ghatlodia,<br/>Ahmedabad-380061<br/>Ph.: 079-27430337, 27430344</p> <p><b>2. Bangalore</b><br/>26/1 Sowbhagya Complex, 24th Mian,<br/>5th Phase, J.P. Nagar, Sarraki Lake,<br/>Bangalore-560078 :6595777, 26595800</p> <p>IDBI House, 58 Mission Road,<br/>Bangalore-560027</p> <p><b>3. Bhopal</b><br/>Plot No. 43, Opposite Rang Mahal,<br/>New Market, T. T. Nagar, Bhopal-<br/>462003</p> <p><b>4. Bhubaneshwar</b><br/>IDBI House, Janpath, Unit IX,<br/>Bhubaneshwar-751022<br/>Ph.: 044-2541695</p> | <p><b>5. Chennai</b><br/>P.M. Towers, 37, Greams Road,<br/>Chennai-600006<br/>Ph.: 044-28292371/72n3n4</p> <p>Soan Building, 37, C.P. Ramaswamy<br/>Road,<br/>Alwarpet, Chennai-600018<br/>Ph.: 044-24661204/7</p> <p>Nelson Towers, New No. 15,<br/>Nelson Manickkam, Road, Chennai-<br/>600029<br/>Ph.: 044-23745802-05</p> <p><b>6. Cochin</b><br/>Near Padma Theater, M.G. Road,<br/>Cochin-682035<br/>Ph.: 0484-2382519-21</p> <p><b>7. Dehradun</b><br/>59/4, Rajpur Road, Dehradun-248001,<br/>Utranchal Ph.: 0135-2744477/2741225-27</p> <p><b>8. Hyderabad</b><br/>Mahavir House, Basheerbagh Square,<br/>Hyderabad- 500029<br/>Ph.: 040-23260000, 23228517, 23222688</p> |
|---|--|

- Plot No.9, Near L. V. Prasad Eye,  
Hospital, J.R. House, Road No.2,  
Banjara Hills, Hyderabad-500034  
Ph.: 040-23548762n9i83
- 9. Jaipur**  
D24, Durlabh Niwas, C Scheme, Jaipur  
Ph.: 0141-2367929/30/379955
- 10. Kolkata**  
Siddha Point, Ground Floor,  
101 Park Street, Kolkata- 700016  
Ph.: 033-22175040/5003/5008  
  
Mookerjee House, 17 Brabourne Road,  
Kolkata- 700001  
Ph.: 033-22437964/65/66/67
- 11. Lucknow**  
15, Ashoka Marg, Lucknow-226001  
Ph.: 0522-2287104/105/287259
- 12. New Delhi**  
1/6 Sirifort Institutional Area,  
Khel Gaon Marg, New Delhi 110049  
Ph.: 011-26499681-85  
  
Surya Kiran Building, Ground Floor,  
19, K.G. Marg, New Delhi-110001  
Ph.: 011-23357800/01/02  
  
J-13/17, Rajouri Garden,  
New Delhi-110027  
Ph.: 011-25911478/82/83  
  
Plot No. 8m C D Block.  
Local Shopping Centre,  
Pitampura, Delhi-110034  
Ph.: 011,27314623, 27312625, 27315629  
  
IFCI Tower, 61, Nehru Place,  
P.B. No. 4499,  
New Delhi-11 0019  
Ph.: 011-6231169/3415
- Khasra No. 550, Vasant Kunj Road,  
Mahipalpur  
Ph.: 011-26787116, 26787118
- 13. Faridabad**  
Ground Floor, SCO-99,  
Sector-16, Faridabad  
Ph. : 0129-25225128/29,25225027
- 14. Ghaziabad**  
C-78, Raj Nagar District Centre,  
Raj Nagar,  
Ghaziabad-201001  
Ph.: 01220-24753000, 24755408/09
- 15. Gurgaon**  
Sikanderpur Brach, Mehrauli-  
Gurgaon Road,  
Sikanderpur, Gurgaon-122002  
Ph.: 0124-26357449 .
- 16. Patna**  
Kashi Palace Complex,  
Oak Bungalow Road,  
Opp. Heera Palace, Patna  
Ph.: 0612-2204141
- 17. Pune**  
Dynaneshwar Paduka Chowk,  
Fergusson College Road, Pune-411004  
Ph.: 020-25678585  
  
Plot No. 128, Ground Floor,  
Blue Hills Avenue, Kalyani Nagar,  
Nagar Road Yerawada, Pune-411 006  
Ph.: 020-6612036/37/38 .  
  
Rajas Apt, Plot No. 13,  
Abhimanshree Road,  
Off Baner Road, Aundh, Pune-411007  
Ph.: 020-25893535-36
- 18. Ranchi**  
Arjan Place, 5, Main Road, Ranchi-  
834001  
Ph.: 0651-2315984, 2315971, 2315980

## AXIS BANK

332 Centres & 578 branches across the country are authorised to collect the programme fee from the students through challan form.



*Annexure - 7*

**Challan Form**

**INDIRA GANDHI NATIONAL OPEN UNIVERSITY**

(For credit to the account of Indira Gandhi National Open University, New Delhi)

Control No.

Programme Code

Region Code

Bank & Branch Code

Computerised No.

(To be filled in by the Candidate)

(To be filled by the Bank)

Programme Name

Year :

Session: (January/July)

Semester :

Enrolment No. (if already allotted)

Programme Fee

Rs. \_\_\_\_\_

Late Fee

Rs. \_\_\_\_\_

Any other Fee

Rs. \_\_\_\_\_

Service Charges

Rs. \_\_\_\_\_

Total Rs.

Amount in words ( \_\_\_\_\_ )

Name and Address of the Student

(City)

(State)

(Pin Code)

Signature of Guardian/Student

**Instructions to the Depositor**

1. Two copies will be returned to the depositor out of which copy marked as "University's Copy" should be submitted to the Regional Centre along with Admission Application Form.

**PLEASE NOTE:**

1. The next pages comprise the admission application form.
2. Before you start filling in the form make sure that you have read the Sections 1-4 and the instructions for filling up the form very carefully.
3. Remember that making wrong entries in the application form will lead to rejection.
4. An electronic version of the Prospectus is also available on the internet at:  
**<http://www.ignou.ac.in>**

## APPLICATION FORM : INSTRUCTIONS AND CODES

### GUIDELINES FOR FILLING IN THE APPLICATION FORM

Some instructions for filling-up of application form are given below:

1. For Programme Code, refer to list of Paramedical/Allied Health Sciences Programmes of this Prospectus.
2. Leave it blank. University will allot the Enrolment No.
3. Codes of Regional Centres and Recognised Regional Centres are given of this prospectus. You have to write the code of that Regional Centre where your Study Centre falls. List of Study Centres will be provided separately by the concerned Regional Centres.
4. For Study Centre Code refer to list of Study Centres of this Prospectus.
5. For State Code, refer to Annexure 3.
6. Please fill the relevant code for medium of instruction in the boxes provided. For example if you are choosing Hindi medium then write B2 as shown below

|   |   |
|---|---|
| B | 2 |
|---|---|

7. (a) and (b) if you are already registered or have done a credit programme with IGNOU, please write the relevant code in the boxes if A1 then write the Enroll No. & Programme Code.
8. Please follow the rule of Date/Month/Year e.g. 5th June 1976 should be written as:

|   |   |   |   |   |   |   |   |
|---|---|---|---|---|---|---|---|
| 0 | 5 | 0 | 6 | 1 | 9 | 7 | 6 |
|---|---|---|---|---|---|---|---|

9. 9-17 write the relevant code in the appropriate Box. For example, if you are male, put (A1) in box against Sl. No. 10.
18. If your name is VIRENDER KUMAR HASIZA, then write as following in the boxes provided for

|   |   |   |   |   |   |   |   |  |   |   |   |   |   |  |   |   |   |   |   |   |  |  |  |  |  |  |
|---|---|---|---|---|---|---|---|--|---|---|---|---|---|--|---|---|---|---|---|---|--|--|--|--|--|--|
| V | I | R | E | N | D | E | R |  | K | U | M | A | R |  | H | A | S | I | Z | A |  |  |  |  |  |  |
|---|---|---|---|---|---|---|---|--|---|---|---|---|---|--|---|---|---|---|---|---|--|--|--|--|--|--|

19. Please write your Father's/Husband's/Mother's name. If the name is KEDAR NATH HASIZA, then write it as follows :

|   |   |   |   |   |  |   |   |   |   |  |   |   |   |   |   |   |  |  |  |  |  |  |  |  |  |  |
|---|---|---|---|---|--|---|---|---|---|--|---|---|---|---|---|---|--|--|--|--|--|--|--|--|--|--|
| K | E | D | A | R |  | N | A | T | H |  | H | A | S | I | Z | A |  |  |  |  |  |  |  |  |  |  |
|---|---|---|---|---|--|---|---|---|---|--|---|---|---|---|---|---|--|--|--|--|--|--|--|--|--|--|

20. For (a) and (b), write the relevant code in the box. If A1, then fill the column 20(b) also.
21. Employment status, write the relevant code in the box.
22. Furnish the details of scholarship, if any received by you.
23. Note that
  - (a) Qualification code is in three digits e.g. 001, 002, 003, 004, 005 and 006. You have to write only highest qualification code, refer to Annexure 4.
  - (b) Write your main subjects in short form.
  - (c) Fill in the year of passing.
  - (d) Write division - 01, 02 or 03. If you have simply passed the examination without containing any of three Divisions, write 04.
  - (e) Write down aggregate percentage obtained by you at the highest level of your qualification and round off to the nearest integer (i.e. 61.3 should be of 61 and 65.7 should be of 66) while filling in the form.
  - (f) Fill the Board Code which the list is given, refer to Annexure 5.

24. You have to pay registration fee of Rs. 100/- along with this Application Form. If the form is downloaded from website, you have to pay additional Rs. 100/-. Make a draft in favour of IGNOU payable at the city where your Regional Centre is situated, and fill the relevant columns.
25. The Programme fee can also be remitted in cash in the branches of Indian Bank or IDBI Bank. The List of Branches which are authorised for fee collection is given in Annex-V. For this, Rs. 5/- (Five only) is chargeable from the students per single transaction in cash while depositing the fees with the Indian Bank or IDBI Bank.
26. Fill in your address for correspondence where you would like to receive your study material and all other correspondence. Do not give post box no. as address. Leave a box blank between each unit of address like house No. street name, P.O. etc. The address given by a student must be in India otherwise the Registration will be invalid.
27. Write down your landline telephone No.
28. Mobile No. (if any).
29. E-mail Address (if any).

### CHECKLIST

Before sending the filled in application form to the Centre for Paramedical Sciences, IGNOU, Maidan Garhi, New Delhi-68, please check whether you have:

check whether you have :

- a) Affixed your Photograph.
- b) Enclosed the following attested certificates,
  - i) Certificates in support of your educational qualifications
  - ii) Experience certificate wherever required.
  - iii) Category certificate for SC/ST/PH/OBC (non-creamy layer) Minority candidates.
  - iv) Age certificate wherever required.
  - v) Student Card duly filled in along with photograph.
  - vi) Acknowledgement Card duly affixed with the postage stamp for Rs 6/-.

**LAST DATE FOR SUBMISSION OF APPLICATION FORM  
31st JULY, 2010**

**All the filled-in Application Forms  
have to be submitted at  
CENTRE FOR PARAMEDICAL SCIENCES,  
IGNOU, MAIDAN GARHI, NEW DELHI - 110068**





# INDIRA GANDHI NATIONAL OPEN UNIVERSITY

## APPLICATION FORM FOR PARAMEDICAL/ALLIED HEALTH SCIENCES PROGRAMMES

(JULY SESSION)

Application Number

Control Number

PHOTOGRAPH

Affix  
your latest  
passport size  
photograph  
(4 cm x 5 cm)  
duly attested

Signature of Candidate

|   |                   |  |   |   |                                       |
|---|-------------------|--|---|---|---------------------------------------|
| 1. Programme Code   |                   | 2. Enrolment No.<br>(For office use only)  |   |   |                                       |
| 3. Regional Centre Code   |                   | 4. Study Centre Code   |   |   |                                       |
| 5. State Code   |                   | 6. Medium Code<br>(Write their level code in the box)<br>A1 English<br>B2 Hindi<br>C3 Others<br>If other please specify  |   |   |                                       |
| 7a. Are you already registered with IGNOU<br>(Write the relevant code in the box)<br>A1 Yes<br>B2 No                                  |                   | 7b. If yes write the Enrol. No. & Program Code in the boxes below:<br>Enrolment No.<br>Programme Code  |   |   |                                       |
| 8. Date of Birth<br>Date Month Year   |                   | 9. Nationality<br>A1 Indian<br>B2 Others   |   |   |                                       |
| 10. Sex<br>(Write the relevant code in the box)<br>A1 Male<br>B2 Female   |                   | 11. Category<br>(Write the relevant code in the box)<br>A1 - GEN B2 - SC C3 - ST D4 - OBC<br>(In case of OBC student, Please also indicate code either)<br>D4 - A or D4 - B<br>(i) Creamy Layer - D4-A<br>(ii) Non-Creamy Layer D4-B     |   |   |                                       |
| 12. Territory Code<br>(Write the relevant code in the box)<br>A1 Urban<br>B2 Rural<br>C3 Tribal                                       |                   | 13. Marital Status (Write the relevant code in the box)<br>A1 Married<br>B2 Unmarried  |   |   |                                       |
| 14. Religion<br>A1 Hindu<br>B2 Muslim<br>C3 Christian<br>D4 Sikh<br>E5 Jain<br>F6 Buddhist<br>G7 Parsi<br>H8 Jews<br>I9 Others        |                   | 15. Whether Minority<br>(Write the relevant code in the box)<br>A1 Yes<br>B2 No  |   |   |                                       |
| 16. Social Status<br>(Write the relevant code in the box)<br>A1 Ex-serviceman<br>B2 War widow<br>C3 Not applicable                    |                   | 17. Whether Kashmiri Migrant<br>(Write the relevant code in the box)<br>A1 Yes<br>B2 No  |   |   |                                       |
| 18. Name of the Candidate (Leave one box empty between First Name, Middle Name and Surname)   |                   |  |   |   |                                       |
| 19. Father's/Husband's Name/Mother's Name (Strick out whichever is not applicable)  |                   |  |   |   |                                       |
| 20(a) Whether a person with disability<br>(Write the relevant code in the box)<br>A1 Yes<br>B2 No                                     |                   | 20(b) If a person with disability (nature of disability)<br>(Write the relevant code in the box)<br>A1 Speech and Hearing Impairment<br>B2 Locomotor Impairment<br>C3 Visual impairment<br>D4 Low Vision<br>E5 Any other, Please specify |   |   |                                       |
| 21. Employment Status<br>(Write the relevant code in the box)<br>A1 Unemployed<br>B2 IGNOU Employee<br>C3 Employed<br>D4 KVS Employee |                   |  |   |   |                                       |
| 22. Details of Scholarship being received if any:<br>(a) Annual Scholarship Amount  |                   | (b) Deptt. Offering Scholarship<br>(Write the relevant code in the box)<br>A1 Govt. Deptt.<br>B2 Other   |   |   |                                       |
| (c) Family Income (yearly)  |                   | (d) Below Poverty Line<br>A1 Yes<br>B2 No  |   |   |                                       |
| 23. Relevant Qualifications: (Which makes you eligible for the programme)   |                   |  |   |   |                                       |
| (a) Qualification<br>Code   | (b) Main Subjects | (c) Year of passing<br>(Last 2 Digits only)  | (d) Division<br>(01, 02, 03 or 04) for pass | (e) % of marks<br>(Do not use Decimals) | (f) Board Code<br>(Wherever required) |
| 24. Details of Fees<br>(with the relevant code in box)<br>B2 Cash Challan of Bank<br>B3 Bank Draft                                    |                   | 25. Amount<br>(Add Rs. 200/- in case of Late fee)<br>DD/Challan No.<br>DD/Challan Date   |   |   |                                       |
| Bank Name :   |                   |  |   |   |                                       |

26. **Address for Correspondence** (Do not give Post Box No. Leave a blank between each unit of address like House No., Street Name, P.O., etc.)

[illegible]

City

[illegible]

District

[illegible]

State

[illegible]

Pin Code

|  |  |  |  |  |  |
|--|--|--|--|--|--|
|  |  |  |  |  |  |
|--|--|--|--|--|--|

27. Landline Telephone Number (if any) with STD Code  
 STD Code Telephone No.

[illegible]

28. Mobile Number (if any)

[illegible]

29. **E-mail address/ID** (if any)

[illegible]

## DECLARATION BY APPLICANT

I hereby declare that I have read and understood the conditions of eligibility for the programme for which I seek admission. I fulfil the minimum eligibility criteria and I have provided necessary information in this regard. In the event of any information being found incorrect or misleading, my candidature shall be liable to cancellation by the University at any time and I shall not be entitled to refund of any fee paid by me to the University. Further, I have carefully studied the rules of the University as printed in the Prospectus and I accept them and shall not raise any dispute in future over the same rules.

Date \_\_\_\_\_

|  |  |
|--|--|
|  |  |
|--|--|

|  |  |
|--|--|
|  |  |
|--|--|

|  |  |  |  |
|--|--|--|--|
|  |  |  |  |
|--|--|--|--|

\_\_\_\_\_

Signature of Candidate

## CHECKLIST

**Tick the relevant boxes**

**Affix photograph and enclose the following attested copies.**

- |                          |       |  |
|--------------------------|-------|--|
| <input type="checkbox"/> | (i)   | Demand Draft/Challan Form for Programme fee/fee for 1st Year/1st Semester.                 |
| <input type="checkbox"/> | (ii)  | Certificates in support of your educational qualification(s).                              |
| <input type="checkbox"/> | (iii) | Experience Certificate wherever required.  |
| <input type="checkbox"/> | (iv)  | Category Certificate for SC/ST/PH/Kashmiri Migrant/War Widow candidates wherever required. |
| <input type="checkbox"/> | (v)   | Age Certificate wherever required.   |
| <input type="checkbox"/> | (vi)  | Student Card duly filed in along with photograph.  |
| <input type="checkbox"/> | (vii) | Acknowledgement Card duly stamped.   |

## CATEGORY CERTIFICATE (I)

(i) SC/ST Candidates

This is to certify that Mr./Ms./Mrs. \_\_\_\_\_ son/daughter/wife of Shri \_\_\_\_\_ of Village \_\_\_\_\_ Town \_\_\_\_\_ Distt. \_\_\_\_\_ State/U.T. \_\_\_\_\_ belongs to \_\_\_\_\_ Caste which is recognised as Scheduled Caste/Scheduled Tribe under the Constitution (Scheduled Caste Part C States) Order 1951 read with the SC/ST list (Modification Order, 1956)

Mr./Ms./Mrs. \_\_\_\_\_ and his/her family reside in Village/Town \_\_\_\_\_ District \_\_\_\_\_ State U.T. \_\_\_\_\_.

(Signature of Tehsildar/Commissioner/District Magistrate)

Place : \_\_\_\_\_ Signature : \_\_\_\_\_

Date : \_\_\_\_\_ Seal/Samp \_\_\_\_\_

## CATEGORY CERTIFICATE (II)

(ii) OBC candidates (only non-cremy layer)

This is to certify that Mr./Ms./Mrs. \_\_\_\_\_ son/daughter/wife of Shri \_\_\_\_\_ of Village \_\_\_\_\_ Town \_\_\_\_\_ Distt. \_\_\_\_\_ State/U.T. \_\_\_\_\_ belongs to \_\_\_\_\_ Caste who are eligible for availing the benefits as per central list of 5 to 13 Cs/OBC as per Resolution No. 12011/68/93-DCC(C) of Ministry of Social Justice & empowerment as modified from time to time by that Ministry based on the advice of the National Commission for Backward Classes. (NCBC).

Mr./Ms./Mrs. \_\_\_\_\_ and his/her family reside in Village/Town \_\_\_\_\_ District \_\_\_\_\_ State U.T. \_\_\_\_\_.

(Signature of Tehsildar/Commissioner/District Magistrate)

Place : \_\_\_\_\_ Signature : \_\_\_\_\_

Date : \_\_\_\_\_ Seal/Samp \_\_\_\_\_

## AFFIDAVIT BY THE STUDENT

I, \_\_\_\_\_ (full name of the student with admission/registration/enrolment number) s/o d/o Mr./Mrs./Ms. \_\_\_\_\_ having been admitted to \_\_\_\_\_ (name of the institution), have received a copy of the UGC Regulations on Curbing the Menace of Ragging in Higher Educational Institutions, 2009, (hereinafter called the “Regulations”) carefully read and fully understand the provisions contained in the said Regulations.

2. I have, in particular, perused clause 3 of the Regulations and am aware as to what constitutes ragging.
3. I have also, in particular, perused clause 7 and clause 9.1 of the Regulations and am fully aware of the penal and administrative action that is liable to be taken against me in case I am found guilty of or abetting ragging, actively or passively, or being part of a conspiracy to promote ragging.
4. I hereby solemnly aver and undertake that
  - a) I will not indulge in any behaviour or act that may be constituted as ragging under clause 3 of the Regulations.
  - b) I will not participate in or abet or propagate through any act of commission or omission that may be constituted as ragging under clause 3 of the Regulations.
5. I hereby affirm that, if found guilty of ragging, I am liable for punishment according to clause 9.1 of the Regulations, without prejudice to any other criminal action that may be taken against me under any penal law or any law for the time being in force.
6. I hereby declare that I have not been expelled or debarred from admission in any institution in the country on account of being found guilty of, abetting or being part of a conspiracy to promote, ragging and further affirm that, in case the declaration is found to be untrue, I am aware that my admission is liable to be cancelled.

Declared this \_\_\_\_\_ day of \_\_\_\_\_ month of \_\_\_\_\_ year.

\_\_\_\_\_  
Signature of deponent

Name :

### VERIFICATION

Verified that the contents of this affidavit are true to the best of my knowledge and no part of the affidavit is false and nothing has been concealed or misstated therein.

Verified at \_\_\_\_\_ (place) this the \_\_\_\_\_ (day) of \_\_\_\_\_ (month), \_\_\_\_\_ (year).

\_\_\_\_\_  
Signature of deponent

Solemnly affirmed and signed in my presence on this the \_\_\_\_\_ (day) of \_\_\_\_\_ (month), \_\_\_\_\_ (year) after reading the contents of this affidavit.

OATH COMMISSIONER



## AFFIDAVIT BY PARENT/GUARDIAN

I, Mr./Mrs./Ms. \_\_\_\_\_ (full name of parent/guardian/father/mother/guardian of, \_\_\_\_\_ (full name of student with admission/registration/enrolment number), having been admitted to \_\_\_\_\_ (name of the institution), have received a copy of the UGC Regulations on Curbing the Menace of Ragging in Higher Educational Institutions, 2009, (hereinafter called the "Regulations") carefully read and fully understand the provisions contained in the said Regulations.

2. I have, in particular, perused clause 3 of the Regulations and am aware as to what constitutes ragging.
3. I have also, in particular, perused clause 7 and clause 9.1 of the Regulations and am fully aware of the penal and administrative action that is liable to be taken against me in case I am found guilty of or abetting ragging, actively or passively, or being part of a conspiracy to promote ragging.
4. I hereby solemnly aver and undertake that
  - a) I will not indulge in any behaviour or act that may be constituted as ragging under clause 3 of the Regulations.
  - b) I will not participate in or abet or propagate through any act of commission or omission that may be constituted as ragging under clause 3 of the Regulations.
5. I hereby affirm that, if found guilty of ragging, I am liable for punishment according to clause 9.1 of the Regulations, without prejudice to any other criminal action that may be taken against me under any penal law or any law for the time being in force.
6. I hereby declare that I have not been expelled or debarred from admission in any institution in the country on account of being found guilty of, abetting or being part of a conspiracy to promote, ragging and further affirm that, in case the declaration is found to be untrue, I am aware that my admission is liable to be cancelled.

Declared this \_\_\_\_\_ day of \_\_\_\_\_ month of \_\_\_\_\_ year.

\_\_\_\_\_  
Signature of deponent

Name :  
Address :  
Telephone/Mobile No. :

### VERIFICATION

Verified that the contents of this affidavit are true to the best of my knowledge and no part of the affidavit is false and nothing has been concealed or misstated therein.

Verified at \_\_\_\_\_ (place) this the \_\_\_\_\_ (day) of \_\_\_\_\_ (month), \_\_\_\_\_ (year).

\_\_\_\_\_  
Signature of deponent

Solemnly affirmed and signed in my presence on this the \_\_\_\_\_ (day) of \_\_\_\_\_ (month), \_\_\_\_\_ (year) after reading the contents of this affidavit.

OATH COMMISSIONER



## INSTRUCTIONS

1. This card should be produced on demand at the Study Centre and Examination Centre or any other Establishment of IGNOU to use its facilities.
2. The facilities would be available only relating to the course or courses for which the student is actually registered.
3. Duplicate Identity Card will be issued by the Regional Director, on payment of Rs. 100/- by way of Demand Draft only in favour of IGNOU payable at the city where Regional Centre is located.
4. Loss of Identity Card is to be reported immediately to the nearest Police Station.
5. Identity Card is to be submitted to the issuing authority after completion of the said programme.



## STUDENT CARD

(FOR USE OF IGNOU FACILITIES ONLY)

## Indira Gandhi National Open University

### ACKNOWLEDGEMENT CARD

*Dear Student,*

*Thank you for joining IGNOU Programme. We acknowledge the receipt of your application form. Please mention Enrolment Number and course applied for in all your future correspondence with the University.*

#### To be filled in by the Student

Course Applied for : .....

DD/Challan No. : .....

DD/Challan Date : .....

Amount : .....

DD Drawn on : .....

#### For Office Use Only

Your Enrolment Number is

Enrolment No. \_\_\_\_\_

Name of the Programme \_\_\_\_\_

Name \_\_\_\_\_

Father's/Husband's/Mother's Name \_\_\_\_\_

Address (in Capital Letters) \_\_\_\_\_

Pin Code \_\_\_\_\_

Full Signature of the Candidate \_\_\_\_\_

**PASTE**

LATEST PHOTOGRAPH TO  
BE PASTED WHICH WILL  
BE  
ATTESTED BY  
UNIVERSITY OFFICERS

ATTESTED BY  
REGIONAL DIRECTOR \_\_\_\_\_  
INDIRA GANDHI NATIONAL OPEN UNIVERSITY

**Please mention your full postal address at the space allocated**

Affix  
Postage  
stamp for  
Rs 6/-

To

\_\_\_\_\_  
\_\_\_\_\_  
\_\_\_\_\_

CITY: \_\_\_\_\_

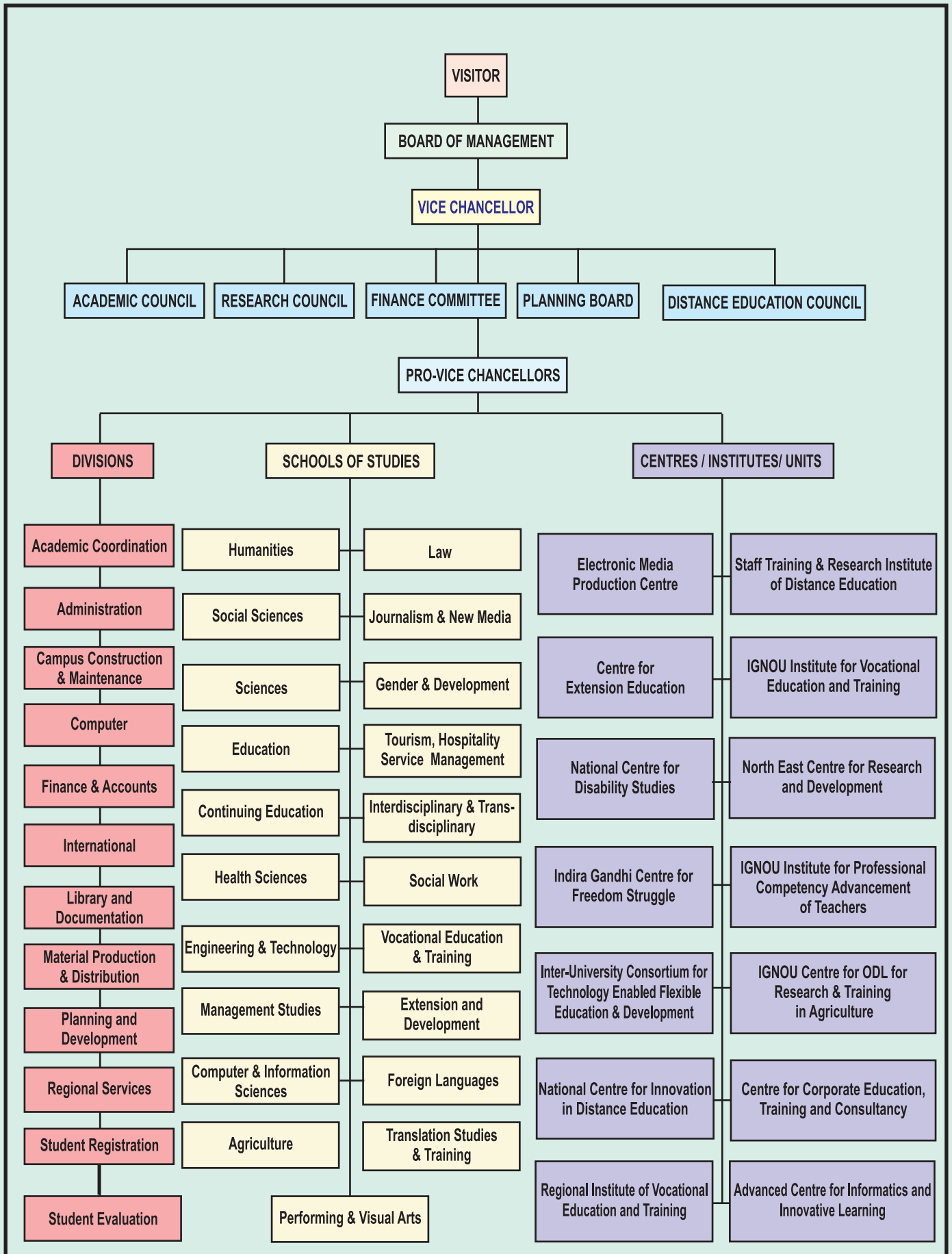
STATE: \_\_\_\_\_

From  
The Regional Director,  
IGNOU Regional Centre

PIN:

|  |  |  |  |  |  |
|--|--|--|--|--|--|
|  |  |  |  |  |  |
|--|--|--|--|--|--|

# ORGANISATIONAL STRUCTURE OF IGNOU





CELEBRATING 25 YEARS  
1985 - 2010

# BECOMING THE PEOPLE'S UNIVERSITY



Starting with 4,000 students in 1985,  
IGNOU has evolved into the world's largest, most diverse  
and inclusive institution, with 2.5 million students



**Indira Gandhi National Open University**  
Maidan Garhi, New Delhi-110 068