

Post Basic B. Sc. Nursing

Student Handbook and Prospectus 2015



**School of Health Sciences
Indira Gandhi National Open University
New Delhi-110068**

IMPORTANT DATES

- | | | |
|----|---|----------------------------|
| 1. | Last date of submission of filled in Entrance Test form | As per advertisement |
| 2. | Tentative date of Entrance test (OPENNET IV) | As per advertisement |
| 3. | Tentative date of declaration of result | October /November 2014 |
| 4. | Tentative date of counseling | December 2014/January 2015 |
| 5. | Final admission | January 2015 |
| 6. | Check IGNOU website www.ignou.ac.in regularly for admission/counselling related information to avoid any delay. Also check website for additional study centre codes. | |

IMPORTANT POINTS TO REMEMBER

1. Applications in the prescribed form complete in all respects should reach the Registrar, Student Evaluation Division, IGNOU, Maidan Garhi, New Delhi – 68 on or before 15th July, 2014 by registered post/speed post.
2. The university will not be responsible for any delay or loss of the application form in the postal transit.
3. The application form received after the last date (i.e. after 15th July, 2014) shall not be accepted in any circumstances.
4. Application forms, which are incomplete in any respect, will be summarily rejected and no correspondence will be entertained in this regard.
5. No alteration/change shall be allowed to be made in the Application Form after it has been submitted to the University.
6. The candidates shall comply with all the instructions while filling the application form. Overwriting, cutting, erasing in the application form may lead to rejection of application form and thus, should be avoided. Any error arising on this account shall be the responsibility of the candidates.
7. No TA/DA is admissible for appearing in the OPENNET and later for counseling.
8. All the correspondence with the candidate will be done only through e-mails and IGNOU website i.e. www.ignou.ac.in therefore ensure that your e-mail is functional and written correctly and legibly in the application form.
9. Experience will be calculated / counted only from the date of registration of RNRM. If RM certificate is obtained after RN certificate, experience will be counted only from the date of registration as RM.
10. In male candidates the experience will be counted after RN. However, the candidates must have completed the INC approved course in lieu of midwifery before submitting the application.
11. In case any candidate has furnished any false information and document or is found to have withheld any information intentionally or unintentionally (By mistake) while submitting his/her application/during counseling, his/her candidature/result/admission will be cancelled and any fee, if deposited will be forfeited
12. Your Ranking in the entrance test is based on merit, experience, GNM Marks, Date of Birth and Caste Category. If any information related to these parameters provided by you in the application form is found to be incorrect (do not match with your original documents) your application/admission at any point of time will be rejected without any further communication.
13. After final admission, for further guidance, candidates have to report to concerned Regional Centre where Programme Study Centre is located.
14. The experience before RN/RM registration will not be considered for admission to post basic BSc Nursing Programme.
15. The OBC certificate of non-creamy layer should not be more than three years old from the date of issuance till the last date of submission of application form.
16. Admission will be confirmed only after the verification of original certificates during counselling and receipt of fee.
17. If you fail to produce any original documents listed at 3.8.2 (page 16) during counselling, your admission will be cancelled without any further clarification.

Post Basic B.Sc. Nursing

**Student Handbook
and
Prospectus
2015**

Last date of Submission of Exam Form – 15th July, 2014



School of Health Sciences
Indira Gandhi National Open University
Maidan Garhi, New Delhi 110 068

RECOGNITION

IGNOU is a CENTRAL UNIVERSITY established by an Act of Parliament in 1985 (Act No. 50 of 1985). IGNOU Degrees/ Diplomas/ Certificates are recognised by all the member institutions of the Association of Indian Universities (AIU) and are at par with Degrees/ Diplomas/Certificates of all Indian Universities/Deemed Universities/ Institutions.

An electronic version of the Prospectus and Application Form is also available on the IGNOU website: <http://www.ignou.ac.in>

Prepared by: **Prof. Pity Koul**, Programme Coordinator, BSC. Nursing, SOHS, IGNOU.

May, 2014

© *Indira Gandhi National Open University, 2014*

All rights reserved. No part of this work may be reproduced in any form, by mimeograph or any other means, without permission in writing from the Indira Gandhi National Open University.

Further information about the School of Health Sciences and the Indira Gandhi National Open University courses may be obtained from the University's office at Maidan Garhi, New Delhi-110 068, India or its website <http://www.ignou.ac.in>

Printed and published on behalf of the Indira Gandhi National Open University, New Delhi, by **Prof. T.K. Jena, Director**, School of Health Sciences, IGNOU, New Delhi.

Print Production : Shri T.R. Manoj, Assistant Registrar (P), School of Health Sciences, IGNOU, New Delhi-110068

Laser Typeset by : Graphic Printers, Mayur Vihar, Phase-I, Delhi.

Printed at : Akashdeep Printers, 20-Ansari Road, Daryaganj, New Delhi-110002

**Price : ₹ 1000.00 by cash at the counter
₹ 1050.00 by registered post**

Contents

1.	The University	5
1.1	Introduction	5
1.2	Prominent Features	5
1.3	Important Achievements	5
1.4	The Schools of Studies & Centres	6
1.5	Academic Programmes	7
1.6	Course Preparation	7
1.7	Credit System	8
1.8	Support Services	8
1.9	Programme Delivery	8
2.	School of Health Sciences	11
3.	Post Basic B.Sc. Nursing	12
3.1	Academic Session	14
3.2	Admission	14
3.3	Eligibility	15
3.4	Age of Admission	15
3.5	Duration of the Programme	15
3.6	Medium of Instruction	15
3.7	Number of Seats	15
3.8	Admission/Selection Procedure	15
3.9	Programme Fees	17
3.10	Programme Delivery	17
4.	University Rules	18
4.1	Educational Qualifications Awarded by Private Institutions	18
4.2	Validity of Degree for Admission	18
4.3	Incomplete and Late Applications	18
4.4	Validity of Admission	18
4.5	Re-admission	18
4.6	Reservation	19
4.7	Scholarships and Reimbursement of Fee	19
4.8	Refund of Fee	19
4.9	Study Material and Assignments	19
4.10	Simultaneous Registration	19
4.11	Change/Correction of Address and Study Centres	19
4.12	Change of Category	20
4.13	Correction/Change of Name/Surname of Learner	20
4.14	Disputes on Admission and other University Matters	20
4.15	Term-End examinations	20
4.16	Early Declaration of Result	22
4.17	Re-evaluation of Term-End Examination	22
4.18	Obtaining Photocopy of Answer Script	22
4.19	Official Transcripts	22
4.20	Duplicate Grade Card	22
4.21	Improvement of Marks	22
4.22	Recognition	23
	Appendices I to XXV	27-98

1. THE UNIVERSITY

1.1 Introduction

The Indira Gandhi National Open University was established by an Act of Parliament in 1985 to achieve the following objectives:

- democratising higher education by taking it to the doorsteps of the learners
- providing access to high quality education to all those who seek it irrespective of age, region, religion and gender
- offering need-based academic programmes by giving professional and vocational orientation to the courses
- promoting and developing distance education in India
- setting and maintaining standards in distance education in the country as an apex body.

1.2 Prominent Features

- Indira Gandhi National Open University has certain unique features such as:
- International Jurisdiction
- Flexible admission rules.
- Individualized study—flexibility in terms of place, pace and duration of study.
- Use of latest information and communication technologies.
- Nationwide student support services network.
- Cost-effective programmes.
- Modular approach to programmes.
- Resource sharing, collaborations and networking with conventional Universities, Open Universities and other Institutions/Organizations.
- Socially and academically relevant programmes based on students needs analysis. Convergence of open and conventional education systems.

1.3 Important Achievements

- IGNOU is the First University in India to Launch Convergence as well as Community College Scheme.
- Emergence of IGNOU as the largest Open University in the World.
- Recognition as Centre of Excellence in Distance Education by the Commonwealth of Learning (1993).

- Award of Excellence for Distance Education Materials by Commonwealth of Learning (1999).
- Launch of a series of 24 hour Educational Channels 'Gyan Darshan'. IGNOU is the nodal agency for these channels and regular transmissions are done from the studio at EMPC, IGNOU.
- Student enrolment has doubled in four years from 1.5 million to over 3 million.
- UNESCO declared IGNOU as the largest institution of higher learning in the world in 2010.
- On spot delivery of study material to students.
- Largest network of learning support system.
- Declaration of Term-end result within 45 days.

1.4 The Schools of Studies and Centres

With a view to develop interdisciplinary studies, the University operates through its Schools of Studies. Each School is headed by a Director who arranges to plan, supervise, develop and organise its academic programmes and courses in coordination with the School staff and different academic, administrative and service wings of the University. The emphasis is on providing a wide choice of courses at different levels. The following Schools of Studies currently are in operation:

- School of Humanities (SOH)
- School of Social Sciences (SOSS)
- School of Sciences (SOS)
- School of Education (SOE)
- School of Continuing Education (SOCE)
- School of Engineering and Technology (SOET)
- School of Management Studies (SOMS)
- School of Health Sciences (SOHS)
- School of Computer and Information Sciences (SOCIS)
- School of Agriculture (SOA)
- School of Law (SOL)
- School of Journalism and New Media Studies (SOJNMS)
- School of Gender and Development Studies (SOGDS)
- School of Tourism and Hospitality Service Management (SOTHSM)

- School of Interdisciplinary and Trans-disciplinary Studies (SOITS)
- School of Social Work (SOSW)
- School of Vocational Education and Training (SOVET)
- School of Extension and Development Studies (SOEDS)
- School of Foreign Languages (SOFL)
- School of Translation Studies and Training (SOTST)
- School of Performing and Visual Arts (SOPVA)

Some of the other Centres and Units which in coordination with the academic, administrative and service wings have developed very useful and educative courses/programmes, are as follows.

- National Centre for Disability Studies (NCDS)
- National Centre for Innovations in Distance Education (NCIDE)

1.5 Academic Programmes

The University offers both short-term and long-term programmes leading to Certificates, Diplomas, Undergraduate Degrees, Postgraduate Degrees and Doctoral Degrees, which are conventional as well as innovative. Most of these programmes have been developed after an initial survey of the demand for such programmes. These are launched with a view to fulfil the learner's needs for :

- Certification
- Improvement of skills
- Acquisition of professional qualifications
- Continuing education and professional development at work place
- Self-enrichment
- Diversification and updation of knowledge and
- Empowerment

1.6 Course Preparation

Learning material is specially prepared by teams of experts drawn from different Universities and specialized Institutions in the area as well as by in-house faculty. This material is scrutinized by the content experts, supervised by the instructors/unit designers and edited by the language experts at IGNOU before they are finally sent for printing. Similarly, audio and video programmes are produced in consultation with the course writers, in-house faculty and producers. The material is previewed and reviewed by the faculty as well as outside media experts and edited/modified, wherever necessary, before they are finally despatched to the Programme Study Centres and Telecast through Gyan Darshan.

1.7 Credit System

The University follows the 'Credit System' for most of its programmes. Each credit in our system is equivalent to 30 hours of student study comprising all learning activities (i.e. reading and comprehending the print material, listening to audio, watching video, attending counselling sessions, teleconference and writing assignment responses). Thus, a 4-credit course involves 120 hours of study. This helps the learner to know the academic effort he/she has to put in, to successfully complete a course. Completion of an academic programme (Degree or Diploma) requires successful completion of the assignments, practicals projects and the term-end examination of each course in a programme.

1.8 Support Services

In order to provide individualised support to its learners, the University has a large number of Study Centres, spread throughout the country. These Study Centres are coordinated by 60 Regional Centres and Recognised Regional Centres. At the Study Centres, the learners interact with the Academic Counsellors and other learners, refer to books in the Library, watch/listen to video/audio programmes and interact with the Coordinator on administrative and academic matters. The list of Regional and Study Centres is given in this handbook. Support services are also provided through Work Centres, Programme Study Centres, Skill Development Centres and Special Study Centres.

1.9 Programme Delivery

The methodology of instruction in this University is different from that of the conventional Universities. The open university system is more learner-oriented and the learner is an active participant in the pedagogical (teaching and learning) process. Most of the instructions are imparted through distance education methodology and face-to-face mode as per the requirement.

The University follows a multimedia approach for instruction, which comprises:

- a) **Self Instructional Written Material:** The printed study material (written in self instructional style) for both theory and practical components of the programmes is supplied to the learners for every course (on an average 1 block per credit). A block which comes in the form of a booklet usually comprises 3 to 5 units.
- b) **Audio-Visual Material Aids:** The learning package contains audio and video cassettes which have been produced by the University for better clarification and enhancement of understanding of the course material given to the learner. A video programme is normally of 25-30 minutes duration. The video cassettes are screened at the study centres during specific sessions which are duly notified for the benefit of the learners.

The video programmes are telecasted on National Network of Doordarshan and Gyan Darshan. All Gyan Vani stations are broadcasting curriculum based audio programmes. Some of the selected stations of All India Radio are also broadcasting the audio programmes. Learners can confirm the dates for the programmes from their study centres. The information is also provided through the National Newspapers, IGNOU Newsletters sent to the learners periodically and university website.

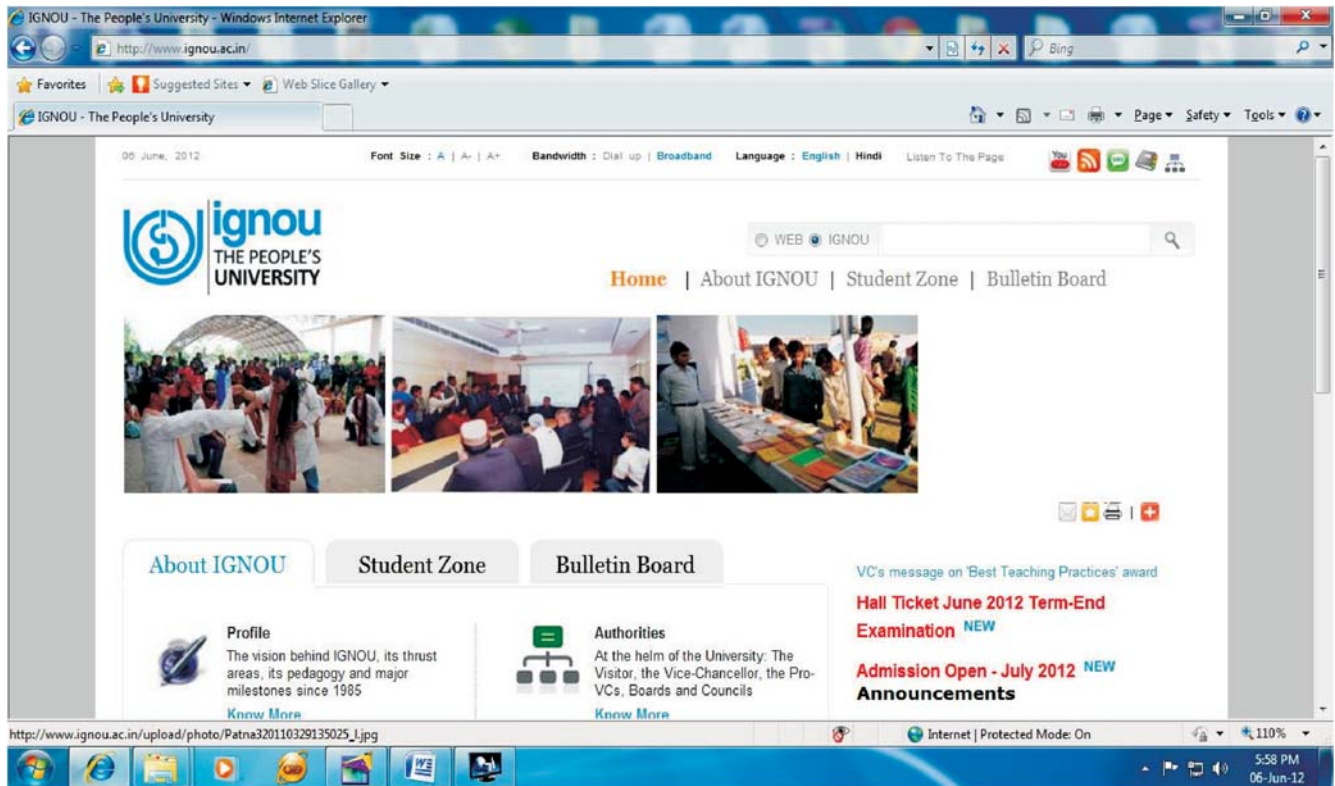
- c) **Counselling Sessions:** Normally Counselling sessions for theory are held as per schedule drawn by the Programme Study Centres. These are mostly held outside the regular working hours of the host institutions where the study centres are located. 75% attendance is compulsory in Post Basic B.Sc. Nursing Programme.

- d) **Teleconferences:** Live sessions are conducted via satellite through interactive Gyan Darshan Channel as well as simultaneously telecasted on Edusat channel from the University studios at Electronic Media Processing Centre (EMPC), the schedule of which is made available at the Programme Study Centres.
- e) **Practicals/Project Work:** Some Programme have practical components also. Practical are held at designated institutions for which schedule is provided by the Programme Study Centres 90% attendance for practicals is compulsory which are conducted in the specialized fields in hospitals and community under the supervision of Academic Counsellors/ Clinical Supervisors.

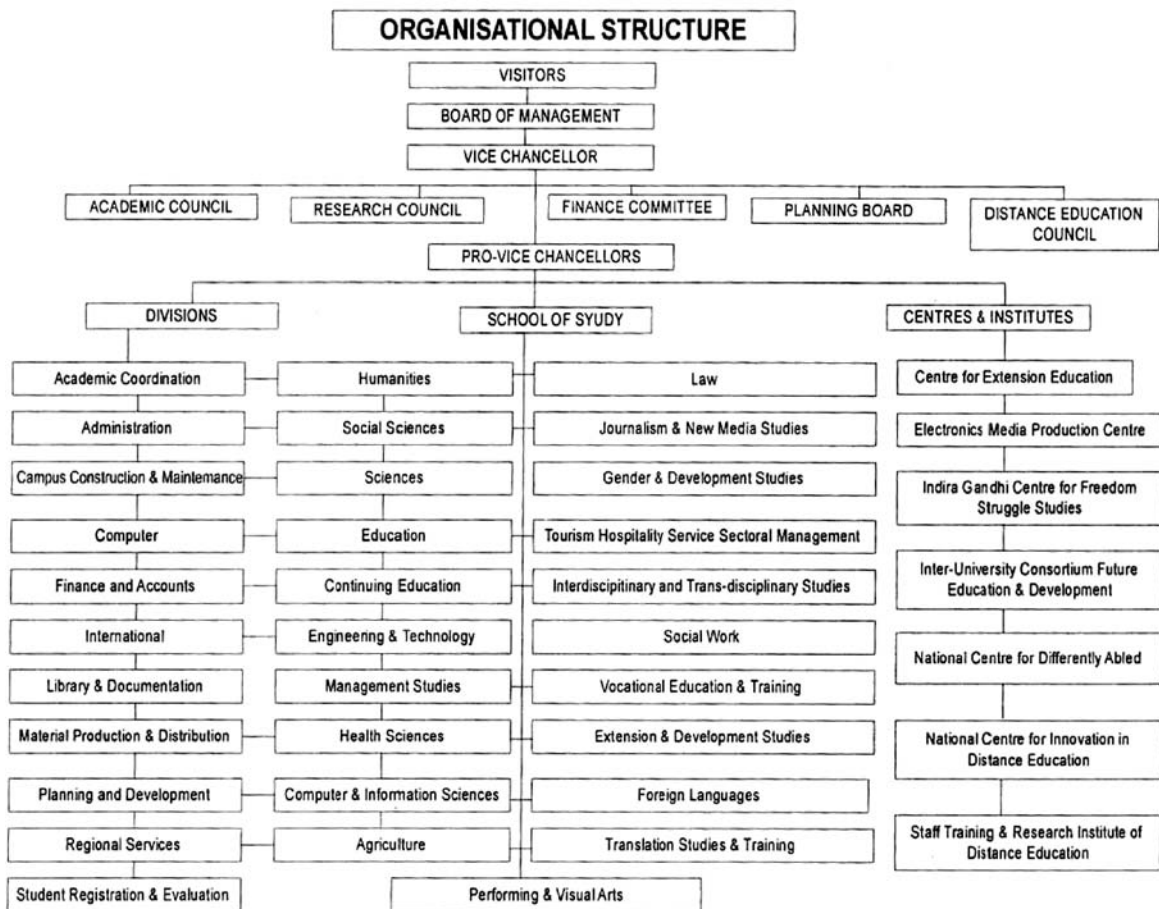
IGNOU Website

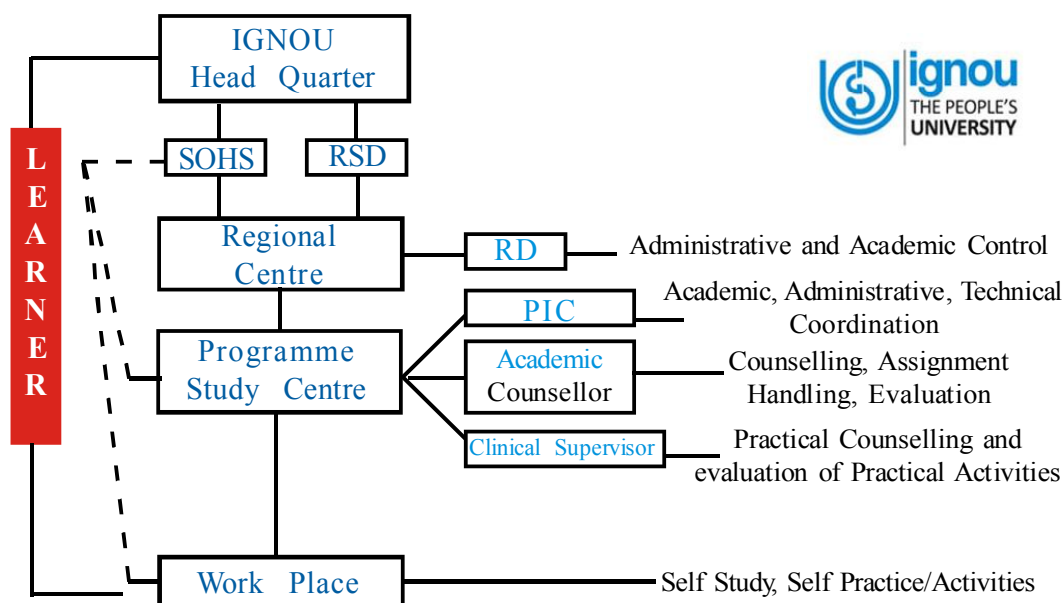
At Website: <http://ignou.ac.in>, the following useful information is available:

- Details of programmes on offer.
- Downloadable prospectus/application forms of various programmes.
- Address checking.
- Material despatch details.
- Assignment of current years.
- Term-end examination date-sheet.
- Catalogue of audio/video programme.
- Hall ticket details.
- Result and Grade Card of your term-end examinations.
- Previous years question papers.
- An update on the latest happenings at the University.
- Programme schedules of Gyan Darshan, Gyan Vani and EDUSAT.
- List of study centres and regional centres.



Web page of IGNOU Website





Infrastructure for Implementation

2. SCHOOL OF HEALTH SCIENCES

The School of Health Sciences (SOHS) was set up with the objective of augmenting educational avenues and for providing in-service training for medical, nursing, paramedical and allied personnel through the distance education mode.

The School is pioneer in developing competency-based programmes in various disciplines of Health Sciences. Innovative approach in Nursing and Medical programmes include hands-on training which is provided through diversified approach of a network of colleges and district level hospitals. The programmes in nursing and health sciences are being developed so as to revolutionize career opportunities available to nursing and medical personnels.

To achieve this, the School is collaborating and exchanging ideas with various national and international organizations like World Health Organization (WHO), United Nations Children's Fund (UNICEF), Ministry of Health and Family Welfare (MoHFW), Dental Council of India (DCI), Voluntary Organizations like Narayana Hrudayalaya, Trained Nurses Association of India (TNAI), INC, Nepal Nursing Council and Partner Institute at DOHA.

Ongoing Programmes

Doctoral Degree

Doctor of Philosophy in Nursing (PhD(N))

Post Doctoral Certificate in Dialysis Medicine (PDCDM)

Bachelor's Degree

Bachelor of Science in Post Basic BSc Nursingh(BScN(PB))

PG and Advance Diploma

Post-Graduate Diploma in Maternal and Child Health (PGDMCH)

Post-Graduate Diploma in Hospital and Health Management (PGDHHM)

Post-Graduate Diploma in Geriatric Medicine (PGDGM)

Post-Graduate Diploma in HIV Medicine (PGDHIVM)

Diploma in Critical Care Nursing (DCCN)

Diploma in Nursing Administration (DNA)

Certificate

Certificate in Maternal and Child Health Nursing (CMCHN)

Certificate in Newborn and Infant Nursing (CNIN)

Certificate in Home Based Health Care (CHBHC)

Certificate in Health Care Waste Management (CHCWM)

3. POST BASIC B.SC. NURSING

The preparation and launching of Post Basic B.Sc. Nursing degree programme has been agreed upon by IGNOU, at the request of Indian Nursing Council. The need for this was felt as the current pace of providing higher education to working nurses is very slow due to shortage of Colleges of Nursing and paucity of seats available in each. As per the New National Policy of Education, the emphasis is on the need for making higher education available within the reach of all. Launching of Post Basic B.Sc. Nursing Programme through Open University will meet its objectives. Further, it will also contribute towards the growth of nursing profession, promote Nation's idea of accelerating women's education and uplifting the expanded and extended role of the nursing personnel. The development of this programme has been undertaken with the involvement of nursing experts, scientists and educationists from related disciplines all over the country.

Programme Objectives

The main objectives of the programme are as follows:

- Provide opportunity to a large segment of in-service nurses to upgrade their knowledge and skills to respond to the changing health needs of the society.
- Motivate nurses to maintain clinical competence to provide quality care.
- Develop teaching, administration and research skills.
- Promote personal and professional growth for better opportunities.

Programme Structure

The University follows the credit system for its various Degree programmes. Each credit amounts to 30 hours of study comprising all learning activities. Thus a four credit course involves 120 study hours and an eight credit course involves 240 study hours. To complete the Post Basic B.Sc. Nursing Programme successfully, student will have to earn 108 credits over a period of 3 to 5 years depending on her/his convenience.

The Post Basic Bachelor of Science in Nursing is a three year Degree programme. This course has two major components: theory and practicals. It is divided into 22 courses; 11 theory and 11 practical.

1) Theory Courses	:	40 Credits
First Year	:	18
Second Year	:	10
Third Year	:	12

2) Practical Courses	:	68 Credits
First Year	:	18
Second Year	:	26
Third Year	:	24

All the courses are compulsory for the students who want to obtain Post Basic B.Sc. Nursing Degree.

One Credit is 30 Student's Study hours.

List of Theory Courses

Year	Title	Course Code	Credits	No. of Blocks	No of Assignments	Counselling Sessions (Hours)	Self Study (Hours)
1st Year	Nursing Foundation	BNS- 101	4	4	2	24	96
	Applied Sciences	BNS-102	4	5	2	15	105
	Maternal Nursing	BNS-103	2	2	1	12	48
	Communicative English	BNS-104	4	4	2	12	108
	Behavioural Sciences	BNS-105	4	4	2	24	96
	Total		18	19	9	87	453
2nd Year	Medical Surgical Nursing	BNS-106	4	4	2	24	96
	Paediatric Nursing	BNS-107	2	3	1	12	48
	Mental Health Nursing	BNS-108	2	4	2	24	96
	Total		10	11	5	60	240
3rd Year	Community Health Nursing	BNS-109	4	4	2	24	96
	Nursing Administration	BNS-110	4	4	2	24	96
	Nursing Education and Reserch	BNS-111	4	4	2	24	96
	Total		12	12	6	72	288
	Grand Total		40	42	20	219	981

Total Hours of Theory and Self Study: 219+981=1200

List of Practical Courses

Year	Title	Course Code	Credits	No. of Blocks	Practical Contact Sessions (Hours)	Self Study Activities (Hours)
1st Year	Nursing Foundation	BNSL-101	4	1	60	60
	Applied Sciences	BNSL-102	4	4	112	08
	Maternal Nursing	BNSL-103	8	4	120	120
	Behavioural Sciences	BNSL-105	2	1	30	30
	Total			18	11	322
2nd Year	Medical Surgical Nursing	BNSL-106	10	2	150	150
	Paediatric Nursing	BNSL-107	8	2	120	120
	Mental Health Nursing	BNSL-108	8	2	120	120
	Total			26	6	390
3rd Year	Community Health Nursing	BNSL-109	8	2	120	120
	Nursing Administration	BNSL-110	6	2	90	90
	Nursing Education and Reserch	BNSL-111	8	2	120	120
	Computer in Nursing	BNSL-112	2	2	30	30
	Total			24	8	360
Grand Total			68	24	1072	968

Total Hours of Self Activities and Practical Contact Sessions : 968+1072=2040

The practical contact sessions will be held in hospital and community in respective area under the supervision of clinical teachers/Academic Counsellors.

Note : One credits is 30 study hours.

3.1 Academic Session

The Programme commences from January of every year.

3.2 Admission

The admission will be made once a year for in-service nurses. The applications should be submitted on prescribed form so as to reach IGNOU before the due date. The application form can also be downloaded from the IGNOU website www.ignou.ac.in.

3.3 Eligibility

In-service Nurses that is Registered Nurses and Registered Midwives (RNRM) having 10+2 with three years, Diploma in General Nursing and Midwifery (GNM) with minimum of two years experience in the profession. (For male nurses who have not done midwifery in the GNM programme should have a certificate in any of the Nursing courses of 6-9 months, duration prescribed by the Indian Nursing Council in lieu of midwifery).

OR

In-service Nurses (RNRM) having 10th class (Matriculation) or its equivalent with three year, Diploma in General Nursing and Midwifery (GNM) with minimum of five years experience in the profession. (For males nurses who have not done midwifery in the GNM programme should have a certificate in any of the nursing courses of 6-9 month, duration prescribed by the Indian Nursing Council in lieu of midwifery).

3.4 Age of Admission:-There is no maximum age limit.

3.5 Duration of Programme

The minimum duration of the programme is three years. However, the students are given a maximum period of five years to complete the programme from the date of registration. After which the student have to apply for readmission paying the prorata fee for each incomplete course of theory.

3.6 Medium of Instruction

English

3.7 Number of Seats

The number of seats as approved by INC for admission to IGNOU Post Basic B.Sc. Nursing students varies from PSC to PSC. The approved list of Programme Study Centres for Post Basic B.Sc. Nursing along with PSCs Code and RCs Code and number of seats is given given in Appendix VI. The list includes active PSCs where Post Basic BSc Nursing students will be admitted. The number of Programme Study Centres may be added as and when more PSCs are inspected and approved by INC. The final list of PSCs for admission to Post Basic B.Sc. Nursing January, 2015 session will be displayed in the IGNOU website by the end of October, 2014.

3.8 Admission/Selection Procedure

Admission for Post Basic B.Sc. Nursing Programme for January, 2015 session will be done on the basis of merit decided through an entrance test.

3.8.1 Entrance Test

- Entrance test will be conducted on scheduled date as decided by the university, in the centres indentified all over the country.
- Entrance test will comprise 120 multiple choice questions (bearing one mark each) drawn from various subjects taught in GNM. Sample of questions asked in the entrance examination is provided in Appendix-X.
- The candidates will be provided OMR Sheet for marking the response. A sample of OMR sheet is attached at appendix XA.
- Duration of test will be two and a half hours.

3.8.2 Declaration of result and counselling

- Result of entrance examination will be declared tentatively in mid of October/November 2014, which will be uploaded in the IGNOU website www.ignou.ac.in. Information about next step of admission process will also be communicated simultaneously.
- Candidates will be required to submit self attested copy of the following certificates at the time of counselling/ Admission and also bring original copies of all the documents for verification during counseling:
 - Certificate of date of birth
 - 10+2 pass certificate
 - RNRM Registration Certificate
 - Experience Certificate/s
 - GNM Mark sheet
 - NOC from the organization of working
 - Category Certificate Indicating reservation status for SC/ST/Non Creamy layer of OBC /PH/Kashmiri Migrant/War Widow etc
- The admission will be made strictly on the basis of merit from the list of eligible candidates in each category after verification of the documents. The reservation policy will be followed as per Government of India rules.

3.8.3 Selection Procedure

- The merit list **for admission to Post Basic B.Sc. Nursing January, 2015 session** will be prepared on the basis of marks obtained in the OPENNET – IV and will be displayed in the website within one week of the declaration of result.
- In case of two or more candidates obtain equal marks in the OPENNET – IV (Entrance Test), the inter-se ranking of such candidates shall be determined on the basis of the following criteria for tie break.
 - a. **Length of relevant experience** : Experience will be counted from the date of registration as RNRM upto the last date of receipt of application form as mentioned in the advertisement. In case of Female candidates who have registered as RN & RM separately, the experience will be counted from the date of RM registration. However, in male candidates, it will be calculated from the date of RN registration upto the last date of receipt of the application form subject to the completion of the INC recognized course in lieu of midwifery before applying for the entrance test.
 - b. **Over all percentage of marks secured in GNM examination** : If, the tie does not get resolved, aggregate marks of GNM in all the three years will be considered for calculating the percentage/merit.
 - c. **Date of Birth**: If the tie between the candidates still does not get resolved, date of birth will be considered. Candidates born earlier will have higher rank than those born later.
 - d. **Draw of Lot**: If there will be a tie even after applying all the above criteria, then rank will be decided through a draw of lot.

NOTE: The OBC certificate of non creamy layer should not be more than three years old from the date of issuance till the last date of submission of application form. The duration of experience, percentage of marks and the date of birth are being used for tie break, Information about all these three parameters mentioned in application form should match with the information available in the documents provided by you. In case, it does not match, the application form will be rejected.

Important points to be noted:

- **The candidates who are offered admission are required to deposit the programme fee. Admission will be confirmed only after verification of original documents and receipt of admission Fee. The fee once deposited will not be refunded.**
- **Students must mention their email ID and mobile phone number in the application form. Otherwise it will be their responsibility to collect updated information related to counseling. IGNOU will not be responsible for nonreceipt of information in time.**
- **All the communication with candidates will be made only through the email ID opennet4@ignou.ac.in and IGNOU website. Therefore, you should ensure that your email ID is functional, written correctly and legibly.**
- **Programme Study Centre once allotted will not be changed.**

3.9 Programme Fees

Programme Fee — ₹ 15,000/- per annum which is subject to change from time to time.

Candidate seeking admission to Post Basic B.Sc. Nursing Programme are advised not to pay the fees along with the filled-in application form. They will get a separate communication about their admission and for payment of programme fee.

The programme fee should be paid only by Demand Draft drawn in the favour of IGNOU. **On the back of Demand Draft write your name, address and telephone number to ensure proper credit to your account.** The details regarding deposition of programme fee will be informed during notification for counselling.

3.10 Programme Delivery

The programme is implemented through a network of Programme Study Centres (PSCs) all over the country. These PSCs are located in recognized colleges of nursing by INC and State Nursing Council.

Face-to-face Academic Counselling is conducted at PSC by Academic Counsellors and Practicals are supervised by Academic Counsellors attached to the PSC in the clinical area and community field (Academic Counsellors and Clinical Supervisors are teachers who teach in Colleges of Nursing). In addition to theory, students also carry on self-activities at their workplace and maintain records as given in practical blocks.

For the practical hands on training the students will be posted in the hospital and community field attached with a Programme Study Centre. A maximum of 30 students will be attached to a programme study centre. The students are required to undergo compulsory contact sessions. Theory Counselling and Practical Sessions are held 8 hours per day. **Supervised activities needs to be completed under the supervision of clinical supervisors whereas self activities are carried out at work place of the student.**

There are 52 days (409 hours) of theory counselling and practical contact sessions in the first year to be conducted at colleges of nursing, hospital and community under supervision. However, 84 days (671 hours) student would require to do the self study and self activities as per guidelines which will be part of continuous evaluation. There are 56 days (450 hours) of theory counselling and practical contact sessions in the second year to be conducted at colleges of nursing, hospitals and community under supervision. However, 79 days (630 hours) student would require to do the self study and self activities as per guidelines which will be part of continuous evaluation.

There are 54 days (432 hours) of theory counselling and practical contact sessions in the third year to be conducted at colleges of nursing, hospitals and community under supervision. However, 81 days (648 hours) student would require to do the self study and self activities as per guidelines which will be part of continuous evaluation. The spells for practicals are given in Appendix VII, VIII and IX.

4. UNIVERSITY RULES

The University reserves the right to change the rules from time to time. However, latest rules will be applicable to all the students irrespective of the year of their registration.

4.1 Educational Qualifications Awarded By Private Institutions

Any educational qualification awarded by the Private Universities established under the provisions of the “*Chhattisgarh Niji Kshetra Vishwavidyalaya (Sathapana a Aur Viniyam), Adhiniyam, 2002*” are non-existent and cannot be considered for admission any of programme in IGNOU.

4.2 Validity of Degree for Admission

- 4.2.1 Master’s Degree awarded without a first degree is not recognised for purposes of admission to IGNOU’s Academic Programmes.
- 4.2.2 Similarly degrees acquired from an off campus centre of private universities outside the territorial jurisdiction of the concerned state is also not recognized for purposes of admission to IGNOU’s academic programmes unless it has specific approval of the distance education council.

4.3 Incomplete and Late Applications

Incomplete Application Form(s)/Re-registration Form(s), received after due date or having wrong options of courses or electives or false information, will be summarily rejected without any intimation to the learners. The learners are, therefore, advised to fill up the relevant columns carefully and enclosed copies of all the required certificates duly attested by a Gazetted Officer. The Admission Form duly completed along with its enclosures is to be submitted to the Regional Director concerned ONLY on or before the due date. The application form sent to other offices of the University will not be considered and the applicant will have no claim, whatsoever, on account of this.

4.4 Validity of Admission

Learners offered admission have to join on or before the due dates specified by the University. In case they want to seek admission for the next session, they will have to apply afresh and go through the admission process again.

4.5 Re-admission

The students who are not able to clear their programme within the maximum duration can take re-admission for additional period in continuation of the earlier period as under:

Programme	Duration Period	Readmission Period
Certificate Programme	6 Months	6 Months
Diploma Prog. with one yr. duration	1 year	1 year
Bachelor’s Degree Programme	3 years	2 years
Master’s Degree Programme	2 years	2 years

For re-admission the student has to make pro-rata fee for each incomplete course. The details of pro-rata fee and the Re-admission Form is available at the Regional Centres and also in the Website for the courses which they have not been able to complete. For further details, please see the website. The students who fail to pay the prescribed full programme fee during the maximum duration of the Programmes shall have to pay full fee for the missed years in addition to pro-rata course fee for re-admission.

4.6 Reservation

The University provides reservation of seats for Scheduled Castes, Scheduled Tribes, non-creamy layer of OBC, War Widows, Kashmiri Migrants and Physically Handicapped learners, as per the Government of India rules, for admission to its various programmes. However, submission of forged certificate under any category shall lead not only cancellation of admission but also be legally implicated as per Govt. of India rules. Format attached at Appedix XIX and XX.

4.7 Scholarships and Reimbursement of Fee

The learners belonging to reserved Categories, viz. Scheduled Castes, Scheduled Tribes and Physically Handicapped have to pay the full fee at the time of admission to the University along with other general category candidates.

The learners belonging to above categories admitted to IGNOU Programme(s) are eligible for Government of India Scholarships. They are advised to collect Scholarship from the Directorate of Social Welfare or from the Office of the Social Welfare Officer, of their State, fill it up and submit the duly completed Scholarship Form to the Regional Director at the Regional Centre (where he/she stand admitted/registered for the programme, he/she applied for admission) for necessary certification by the Regional Director. After the above certification, the Scholarship Form be collected from the Regional Centre and re-submitted at the office of the Social Welfare Officer or Directorate of Social Welfare in their State, as the case may be, for scholarship or reimbursement of Programme Fee Scholarship scheme of National Centre for Promotion of Employment of Disabled People (NCPEDP) for Post Graduate level programmes is applicable to the students of this University also. Such students are advised to apply to awarding authority directly.

4.8 Refund of Fee

Fee once paid will not be refunded under any circumstances. It is also not adjustable against any other pogramme of this University. However in cases where University denies admission, the programme fee will be refunded after deduction of registration fee through A/c Payee Cheque Only.

4.9 Study Material and Assignments

The University sends study materials and assignments, wherever prescribed, to the students through Regional Centres or by registered post and if a student does not receive the same for any reason whatsoever, the University shall not be held responsible for that. In case a student wants to have assignments, she can obtain a copy of the same from the Study Centre or Regional Centre or may download it from the IGNOU website www.ignou.ac.in. In case non-receipt of study material students are required to write to concerned Regional Centre of IGNOU.

4.10 Simultaneous Registration

Students who are already enrolled in a programme of one year or longer duration can also simultaneously register themselves for any certificate programme of 6 months duration. However, if there is any clash of dates of counselling or examination schedule between the two programmes taken, University will not be in a position to make adjustment.

Simultaneously pursuing two academic Progammes either from the same University, or one from the Open University (under ODL mode) and the other from Conventional University (regular or face-toface mode) is not permitted, as of now, except add-on courses.

4.11 Change/Correction of Address and Study Centres

There is a printed card for change/correction of address and change of study centre which is dispatched along

with the study material. In case there is any correction/change in the address, the learners are advised to make use of proforma provided in the Programme Guide and send it to the Regional Director concerned who will forward the request after verifying the student's signature to SR Division, Maidan Garhi, New Delhi-110 068. Requests received directly at SRD, New Delhi will not be entertained. The form for change of address can also be downloaded from IGNOU website: www.ignou.ac.in. Learners are advised not to write letters to any other officer in the University in this regard. Normally, it takes 4-6 weeks to effect the change. Therefore, the learners are advised to make their own arrangements to redirect the mail to the changed address during this period. In case a change of Study Centre is desired, the learners are advised to fill the proforma and address it to the Regional Centre concerned. Since counselling facilities are not available for all Programmes at all the centres. Learners are advised to make sure that counselling facilities are available, for the subject he/she has chosen, at the new centre opted for. Change of Address and Study Centre are not permitted until admissions are finalized. Similarly, change of Study Centre is not permissible in programmes where practical components are involved.

4.12 Change of Category

please note that any request for change of category code shall not be entertained by the University specially for the programmes with entrance based after the scheduled examination.

4.13 Correction/Change of Name/Surname of Learner

4.13.1 Spelling mistakes, if any, committed at the time of data entry stage will be rectified at the Regional Centre and corrected data transmitted to Student Registration Division for updating in the database. However, Learners are expected to write their correct name (as indicated in the High School Certificate) in the Admission Form. In case any change in the name (other than the one mentioned in his/her High School Certificate), then it is mandatory for the prospective learners to furnish legal evidence of having changed his/ her name/ surname while submitting the admission form.

4.13.2 For **Change of Name/Surname**, after confirmation of admission, the learners are required to submit the following documents at the **Regional Centre**, for onward transmission to Registrar, SRD:

- i) Original copy of Notification in a daily newspaper notifying the change of name;
- ii) Affidavit, in original, on non-judicial stamp paper of the appropriate value sworn in before 1st Class Magistrate specifying the change in name.
- iii) Marriage card/Marriage Certificate in case of women candidates for change in surname.
- iv) Gazette Notification, in original, reflecting the change of name/surname.
- v) Demand Draft of ₹ 400/- drawn in favour of IGNOU Payable at New Delhi.

4.13.3 Request for correction and/ or change of Name/ Surname will be entertained only before completion of the programme.

4.14 Disputes on Admission and Other University Matters

The place of jurisdiction of filing of suit, if necessary, will be only at New Delhi/Delhi.

4.15 Term-End Examination

The learners can appear in the June as well as December Term-End Examination, after completion of minimum one year programme.

The University conducts Term-End Examination twice a year in the month of June and December every year. Students will be permitted to appear in Term-end Examination subject to the condition that registration for the courses in which they wish to appear is valid. Maximum time to pursue the programme is not elapsed

and they have also submitted the required number of assignment(s), if any, in those courses by the due date. **Post Basic B.Sc. Nursing Programme students can appear in TEE after one year of enrolment, completing of assignments and practical is a prerequisite for TEE including session.**

Examination Fee

Examination fee of ₹ 60/- per course (subject to any change) is required to be paid through Bank Draft in favour of IGNOU payable at the city of Regional Centre where the exam form is submitted. The examination forms are available at all the Study Centres and Regional Centres. Student can also download examination form from IGNOU website www.ignou.ac.in. Students can also submit on-line examination form as per guidelines through IGNOU website at www.ignou.ac.in.

Before submission of the examination form, a certificate from the coordinator (PIC) Programme Study Centre shall be obtained by the student in respect of submission of assignments for the course he/she wants to appear in the Term-End-Examination, without which the examination form will not be accepted.

Examination Centre

A student is required to fill the exam centre code in the examination form. For the purpose you are advised to go through the list of programme study centres available in the Student Handbook and Prospectus. In case any student wish to take examination at a particular centre, the code of the chosen centre be filled up as examination centre code. However, examination centre chosen by a student if is not activated, the University will allot another examination centre under the same Region.

Date of Submission of Examination Forms

JUNE, TEE	DECEMBER, TEE	LATE FEE	WHERE TO SUBMIT THE FORM
1 st March to 31 st March	1 st Sept to 30 th Sept	NIL	Only at the concerned Regional Centre under which your examination centre falls
1 st April to 20 th April	1 st Oct to 20 th Oct.	₹ 300/-	
21 st April to 30 th April	21 st Oct to 31 st Oct.	₹ 500/-	
1 st May to 15 th May	1 st Nov to 15 th Nov	₹ 1000/-	The exam centre will be the Regional Centre City

To avoid discrepancies in filling-up examination form/hardship in appearing in the term-end examination students are advised to :

- remain in touch with your Programme Study Centre/Regional Centre/Student Evaluation Division for change in schedule of submission of examination form fee if any;
- Although all efforts are made to declare the result in time, there will be no binding on the University to declare the results of the last examination before commencement of next examination. You are, therefore, advised to fill up the examination form without necessarily waiting for the result and get it cancelled at a later date if so required.
- fill-up all the particulars carefully and properly in the examination form to avoid rejection/delay in processing of the form;
- retain proof of mailing/submission of examination form till you receive examination hall ticket;

Issue of Examination Hall Ticket

University issues Examination Hall Ticket to the student's atleast two weeks before the commencement of Term-end Examination the same could also be downloaded from the University's website: www.ignou.ac.in. In case any student fails to receive the Examination Hall Ticket within one week before the commencement of the examination the students can download the hall ticket from the website and approach the exam centre for appearing in the exam. Always carry your id with you.

4.16 Early Declaration of result

The student can apply for early declaration of Term-End-Examination result with a fee of Rs. 700/- per course. **The application** for early declaration of result shall **be entertained** only if the **student has been selected for any post or** applied for further studies. The student must compulsorily submit documentary evidence (proof) in support of the reason for early declaration of result to the concerned Evaluation Centre whose details are available on the University website.

Early Declaration is permissible in Term-End-Examination only. This facility is not applicable for Lab/Practical courses, Project, Assignment, Workshop, seminar etc. based courses. The Application for Early Declaration of result shall be entertained for final year only. Format attached at Appendix XIV.

4.17 Re-evaluation of Term-End-Examination

After the declaration of result, if the students are not satisfied with the marks awarded, they can request the University to re-evaluate their Answer Scripts on payment of Rs. 500/- per course. The request for re-evaluation by the student must be made within one month from the date of declaration of result to the concern Evaluation Centre in the prescribed format along-with the fee of Rs. 500/- per course in the form of Demand Draft in favour of IGNOU payable at the city where submitting die Re-evaluation form. Format attached at Appendix XV.

4.18 Obtaining Photocopy of Answer Scripts

After the declaration of result if the students are not satisfied with the marks awarded, they can request the University for obtaining Photocopy of Answer Scripts on payment of Rs. 100/- per course. The request for obtaining Photocopy of Answer Scripts by the student must be made within 45 days from the date of declaration of result to the concern Evaluation Centre in the prescribed format along-with the fee of Rs, 100/- per course in the form of Demand Draft in favour of IGNOU payable at the city where submitting the Photocopy form. Format attached at Appendix XIII.

4.19 Official Transcripts

The University provides the facility of official transcripts on request made by the learners on plain paper addressed to Registrar, Student Evaluation Division (SED), Block-12, IGNOU, Maidan Garhi, New Delhi-110 068. A fee of Rs.200/- per transcript payable through DD in favour of IGNOU is charged for this purpose. In case of request for sending transcript outside India, the students are required to pay **Rs.400/- or \$100**. Format attached at Appendix XVII.

4.20 Duplicate Grade Card

The learner can apply for obtaining duplicate Grade Card in case of lost/misplaced/damaged by paying through Demand Draft of Rs. 150/- in favour of IGNOU payable at “New Delhi”. Format attached at Appendix XVIII.

4.21 Improvement of Marks

The improvement of marks/grades is applicable only for the Bachelor's/Master's Degree Programmes, who have completed the programme. The eligibility is as under: -

- The students of Bachelor's/Master's Degree Programmes who fall short of 2% marks to secure 2nd and 1st division,
- The students of Master's Degree Programmes only, who fall short of 2% marks to secure overall 55% marks.

Under the Provision of improvement, a maximum of 25% of the maximum credits required for successful completion of a programme shall be permitted. The improvement is permissible only in theory papers. No improvement is

permissible in Practicals/Lab courses, Projects, Workshops and Assignments etc. Only one opportunity will be given to improve the marks/grade.

Students wishing to improve the marks will have to apply within six months from the date of issue of final statement of marks/grade card to them on payment of Rs. 500/- per course in the form of demand draft favouring IGNOU payable at New Delhi, subject to the condition that their registration for the programme/course being applied for improvement, is valid till the next term-end examination in which they wish to appear for improvement. Format attached at Appendix XVI.

4.22 Recognition

IGNOU Degrees/Diplomas/Certificates are recognized by all member universities of the Association of Indian Universities (AIU) and are at par with Degrees/Diplomas/Certificates of all Indian Universities/Institutions, as per UGC Circular letter no. 1-8/92(CPP) dated February 1992 & UGC circular D.O. No. F,1-25/03(CPP-II) dated 28th July 1993, F.1-52/2000(CPP-II) dated 5th May, 2004, AIU Circular No. EV/11(449/94/176915-177115 dated January 14, 1994 (See Appendix-I, II, III & IV).

PREVENTION OF MALPRACTICE/NOTICE FOR GENERAL PUBLIC

Students seeking admission to various academic programmes of Indira Gandhi National Open University are advised to directly contact IGNOU headquarters at New Delhi or Regional Centres of IGNOU only. Students interacting with intermediaries shall do so at their own risk and cost.

However, in case of any specific complaint regarding fraudulent institutions, fleecing students etc., please contact any of the following members of the Malpractices Prevention Committee:

1. Director, Research Unit (Tele: 2953 4336)
2. Director, SSC (Tele: 2953 5714)
3. Director, RSD (Tele: 2953 2118)
- 4 Registrar (SRD) (Tele: 2953 2741)
3. Registrar (SED) (Tele: 2953 5828)
4. Registrar, MPDD (Tele: 2953 4521)
5. Deputy Registrar, F&A (Tele: 2953 4934)
6. Deputy Registrar (SRD) (Tele: 2957 1112)

Alternatively complaints may be faxed on 29536588, 29532312.

Email : ignouregistrar@ignou.ac.in

Website: <http://www.ignou.ac.in>

Note : Except the above mentioned complaints, no other queries will be entertained at the above phone numbers.

As per directions of Hon'ble Supreme Court of India ragging is prohibited. If any incident of ragging comes to the notice of the authority, the concerned student shall be given liberty to explain and if her/his explanation is found not satisfactory, authority would expel her/him from the University.

PRE-ADMISSION ENQUIRY

If you have any queries on academic aspects of the programme please contact:

Programme Coordinator

Prof. (Dr.) Pity Koul

Professor, SOHS

Indira Gandhi National Open University

Maidan Garhi New Delhi - 110068 e-mail : pkoul@ignou.ac.in

If you have any query regarding admission procedures please write to Regional Director of your region.

IGNOU admissions are made strictly on the basis of merit. Only those learners who satisfy the eligibility criteria fixed by the University will be admitted. Learners will not be admitted if they are not eligible as per the eligibility criteria. Therefore, the candidates should not be misled by the false promises of admission made by any private individuals or institution.

WHOM TO CONTACT FOR WHAT

1. Identity Card, Fee Receipt, Bonafide Certificate, Migration, Certificate, Scholarship Forms, change of name, correction of name/address	Concerned Regional Centre
2. Non-receipt of study material and assignments	Concerned Regional Centre
3. Change of Elective/Medium/ opting of left over electives/ Deletion of excess credits	Concerned Regional Centre
4. Schedule/Information regarding Exam-form, Entrance Test, Date-sheet, Hall Ticket	Assistant Registrar (Exam.II), SED, Block-12, IGNOU, Room No. 2, Maidan Garhi, New Delhi-110068 E-mail : sgoswami@ignou.ac.in or Ph. :29536743, 29535924-32 / Extn. : 2202, 2209
5. Result, Re-evaluation result, Grade Card, Provisional Certificate, Early Declaration of Result, Transcript, etc.	Deputy Registrar (Exam-III), SED, IGNOU, Block-12, Room No. 1, IGNOU, Maidan Garhi, New Delhi-110068 npsingh@ignou.ac.in or Ph. :29536103, 29571000/ Extn. : 2208, 2210,2211,2212
6. Non-reflection of Assignment Grades/Marks	Asstt. Registrar, (Assignment) SED, Block-3, Room No. 12, IGNOU, Maidan Garhi, New Delhi-110068 assignments@ignou.ac.in or rnjha@ignou.ac.in Ph. : 29535924 / Extn. : 1312, 1319, 1325
7. Status of Project Reports of all programmes	Ph. : 011-5129532294 Ext. 1313/1320/1321 Email : projects@ignou.ac.in
8. Original Degree/Diploma/Verification of Degree/Diploma	Deputy Registrar (Exam.I), SED, , Block 9, IGNOU, Maidan Garhi, New Delhi - 110068. Ph. : 29535438, 29535924-32/ Extn. : 2224, 2213
9. Re-admission and Credit Transfer	Student Registration Division, Block No. 3, Maidan Garhi, New Delhi-110068
10. Student Grievances (SED)	Asstt. Registrar (Student Grievance) SED, Block-3, Room No. 13, IGNOU Maidan Garhi, New Delhi-110068 sedgrievance@ignou.ac.in Ph. : 29532294, 29535924 / Extn. : 1313
11. Purchase of Audio/Video Tapes	Marketing Unit, EMPC, IGNOU, Maidan Garhi, New Delhi - 110068
12. Academic Content	Programme Coordinator Director of the School concerned
13. Approval of a Project Synopsis	Project Co-ordinator in the Concerned School
14. Submission of Project Reports Except BCA & MCA	Asstt.Registrar(Projects), SED, Block-12, Telephone Nos.: 29535924-32 Extn. : 2216
15. Student Support Services and Student Grievances, pre-admission Inquiry of various courses in IGNOU	Director, Student Service Centre, IGNOU, Maidan Garhi, New Delhi - 110068 ssc@ignou.ac.in Telephone Nos.: 29535714, 29533869, 2953380 Fax: 29533129

Appendices

UNIVERSITY GRANTS COMMISSION
BAHAUDR SHAH ZAFAR MARG
NEW DELHI-110 002

No.F.1-8/92(CPP)

February, 1992

The Vice-Chancellors/Director's
of all the Indian Universities/
Deemed Universities/Institutions
of National Importance.

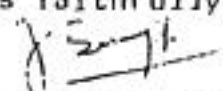
* Sub: Recognition of Degrees/Diplomas awarded by
Indira Gandhi National Open University, New Delhi.

Sir,

~~I am directed to say that~~ Indira Gandhi National
Open University, New Delhi has been established by
Sub-Section (2) of Section (1) of the IGNOU Act, 1985
(50 of 1985) vide notification No.F.13-12/85-Dusk(U)
dated 19.9.1985 issued by the Government of India,
Ministry of Human Resource Development (Department of
Education), New Delhi and is competent to award its
own degrees/Diplomas.

The Certificates, diplomas and degrees awarded by
Indira Gandhi National Open University are to be
treated equivalent to the corresponding awards of the
Universities in the country.

Yours faithfully,


(Gurcharan Singh)
Under Secretary



एन सी ई आर
विश्वविद्यालय अनुदान आयोग
बाहुगल नगर भवन
नई दिल्ली-110 002

GRANT'S UNGRANTS
UNIVERSITY GRANTS COMMISSION
BAHADURSHAH ZAFAR MARG
NEW DELHI-110 002

R.P. Gangurde
Additional Secretary
Tel.No.3319659

D.O.No.F.1-26/03(CPP-11)

July, 1993

Dear Vice Chancellor,

28 JUL 1993

As you are aware, the Open Universities have been established in the country by an Act of Parliament or State Legislature in accordance with the provisions contained in Section 2(f) of University Grants Commission Act, 1956. These universities are, therefore, empowered to award degrees in terms of Section 22 (1) of the UGC Act, 1956.

It has been brought to the notice of the Commission that the students who have done their M.A. from open universities are debarred by universities from registration for Ph.D. studies. This is most unfair in view of the importance attached to the Open University and distance learning in National Policy on Education, 1986. The Programme of Action-02 also aims at promoting the mobility of students among open universities and among the traditional universities. This can be made possible only when there is a workable understanding between open universities and traditional universities for recognition of each other's degrees on reciprocal basis. A Memorandum of Understanding has already been signed between University of Pondicherry and Indira Gandhi National Open University which provides for recognition of each other's degrees and diplomas as well as transfer of credits for courses successfully completed by students between the two universities. The other universities may also make similar arrangements so that the mobility of students from Open University stream to traditional universities is ensured without any difficulty.

I hope that your university will make necessary efforts in this direction and let the Commission know the progress.

With regards,

Yours sincerely,

R.P. Gangurde

(R.P. Gangurde)

23236351, 23232701, 23237721, 23234116
23234733, 23232117, 23234734, 23239437



ज्ञान-विज्ञान सिद्धयते

विश्वविद्यालय अनुदान आयोग
बहादुरशाह जफर मार्ग
नई दिल्ली- 110 002
UNIVERSITY GRANTS COMMISSION
BAHADURSHAH ZAFAR MARG
NEW DELHI-110 002

F1-52/2000(CPP-II)

April, 2004

5 MAY 2004

The Registrar
Indira Gandhi National Open University
Maidan Garhi
New Delhi - 110 068

Subject: Recognition of Degrees awarded by Open Universities.

Sir/Madam,

There are a number of open Universities in the country offering various degrees/diploma through the mode of non-formal education. The Open Universities have been established in the country by an Act of Parliament or State Legislature in accordance with the provisions contained in Section 2(f) of University Grants Commission Act, 1956. These universities are, therefore, empowered to award degrees in terms of Section 22(1) of the UGC Act, 1956.

A circular was earlier issued vide UGC letter N.F.1-8/92(CPP) dated February, 1992 mentioning that the Certificate, Diplomas and Degrees awarded by Indira Gandhi National Open University are to be treated equivalent to the corresponding awards of the Universities in the country.

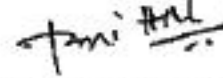
Attention is further invited to UGC circular No.F1-25/93(CPP-II) dated 28th July, 1993 (copy enclosed) for recognition of degrees and diplomas as well as transfer of credit for courses successfully completed by students between the two types of universities so that the mobility of students from Open University stream to traditional Universities is ensured without any difficulty.

The UGC has specified the nomenclature of degrees under Section 22(3) of the UGC Act, 1956 to ensure mandatory requirements viz. minimum essential academic inputs required for awarding such degrees. A copy of Gazette Notification regarding specification of degrees issued vide No.1-52/97(CPP-II) dated 31st January 2004 is enclosed. The details are also given in UGC Web site: www.ugc.ac.in

Contd...../-

May, I therefore request you to treat the Degrees /Diploma /Certificates awarded by the Open Universities in conformity with the UGC notification on Specification of Degrees as equivalent to the corresponding awards of the traditional Universities in the country.

Yours faithfully,



(Dr.[Mrs.]Pankaj Mittal)
Joint Secretary

Encl : As above

Copy to: -

1. The Secretary. Government of India, Ministry of Human Resource Development, Department of Secondary Education and Higher Education, Shastri Bhavan, New Delhi-110001.
2. The Secretary, All India Council for Technical Education, I.G. Sports Complex, Indraprastha Estate, New Delhi-110002.
3. The Secretary, Association of Indian Universities (AIU), 16 Comrade Inderjit Gupta Marg (Kotla Marg), New Delhi-110002.
4. The Secretary, National Council for Teacher Education, I.G. Stadium, I.P. Estate, New Delhi-110002.
5. The Director of Distance Education Council, IGNOU Campus, Maidan Garhi, New Delhi-110068.
6. The Vice-chancellor Indira Gandhi National Open University, Maidan Garhi, New Delhi-110068
7. The Vice-chancellor Dr. B.R. Ambedkar Open University, Road No.46, Jubilee Hills, Hyderabad-500033(Andhra Pradesh)
8. The Vice-chancellor Nalanda Open University, West Gandhi Maidan, Patna-800001(Bihar)
9. The Vice-chancellor Dr. Babasahab Ambedkar Open University, Shahibaug, Ahmedabad-380003(Gujarat)
10. The Vice-chancellor Karnataka State Open University, Manasagangotri, Mysore-570006(Karnataka)
11. The Vice-chancellor Yashwant Rao Chavan Maharashtra Open University, Nashik-422222(Maharashtra)
12. The Vice-chancellor, Kota Open University (Vardhaman Mahaveer Open University), Kota-324010(Rajasthan).
13. The Vice-chancellor Netaji Subhash Open University, Kolkata - 700020 (West Bengal)
14. The Vice-Chancellor, Madhya Pradesh Bhoj(Open) University, Bhopal-462016 (M.P.)



(V.K. Jaiswal)
Under Secretary



ASSOCIATION OF INDIAN UNIVERSITIES
AIU HOUSE, 16 KOTLA MARG, NEW DELHI-110 002

Phones : 3312305, 3313390
3310059, 3312429

Gram : ASINGU
Telex : 31 66180 AIU IN
Fax : 011-3315105
No. EV/II(449)/94/176915-177115
January 14, 1994

The Registrar(s)

Member Universities.

Subject : Recognition of Degrees/Diplomas of Open Universities

Dear Sir,

The Standing Committee at its 237th meeting held at Utkal University and the 68th Annual Session of the AIU and in December, 1993 at the University of Delhi have decided in principle that the Degrees of the Open Universities be recognized in terms of the flowing resolutions:

"Resolved that the examinations of one University should be recognized by another on reciprocal basis, provided that the entrance qualification, duration of course and the general standard of attainment are similar to those prescribed by the recognized university."

"Further resolved that in case of Degrees awarded by Open Universities, the conditions regarding entrance qualifications and duration of the course be relaxed provided that the general standard of attainment are similar to those prescribed by the recognized university."

The decision is brought to the notice of the Universities for favour of appropriate action in the matter. The additional information, if required in this behalf, may kindly be obtained from the Registrar of the Universities direct.

Thanking You,

Your faithfully,

Sd/-
(K.C.KALRA)
Joint Secretary

REGION-WISE LIST OF STUDY CENTRES

SL. NO.	REGIONAL CENTRE	CODE OF STUDY CENTRE & CATEGORY	PLACE OF STUDY	ADDRESS OF THE IGNOU STUDY CENTRE
1	AGARTALA RC Code : 26	2601	AGARTALA	COORDINATOR IGNOU STUDY CENTRE TRIPURA UNIVERSITY UNIVERSITY CAMPUS AGARTALA TRIPURA-799004
2	AHMEDABAD RC Code : 09	0901	AHMEDABAD	COORDINATOR IGNOU STUDY CENTRE L.D. ARTS COLLEGE NAVRANGPURA AHMEDABAD GUJARAT-380009
3	AHMEDABAD	0902	VADODARA	COORDINATOR IGNOU STUDY CENTRE M.S. UNIVERSITY GENERAL EDUCATION BUILDING VADODARA GUJARAT-390002
4	AHMEDABAD	0905	SURAT	COORDINATOR IGNOU STUDY CENTRE MTB ARTS COLLEGE SURAT GUJARAT-395001
5	AHMEDABAD	0909	MEHSANA	COORDINATOR IGNOU STUDY CENTRE NEW PROGRESSIVE EDUCATION TRUST ABOVE HOMEOPATHY COLLEGE MEHSANA GUJARAT-384002
6	AHMEDABAD	0910	ANAND	COORDINATOR IGNOU STUDY CENTRE SARDAR PATEL UNIVERSITY UNIVERSITY HEALTH CENTRE VALLABH VIDYANAGAR ANAND GUJARAT-388120
7	AHMEDABAD	0911	GANDHINAGAR	COORDINATOR IGNOU STUDY CENTRE SAMARPAN ARTS & COMMERCE COLLEGE GANDHINAGAR GUJARAT

REGION-WISE LIST OF STUDY CENTRES

SL. NO.	REGIONAL CENTRE	CODE OF STUDY CENTRE & CATEGORY	PLACE OF STUDY	ADDRESS OF THE IGNOU STUDY CENTRE
8	AHMEDABAD	0913	BHARUCH	COORDINATOR IGNOU STUDY CENTRE ANJUMAN-E-TALIME-IDARA COURT ROAD OPPOSITE TREASURY BHARUCH GUJARAT-392001
9	AHMEDABAD	0920	AHMEDABAD	COORDINATOR IGNOU STUDY CENTRE L.J. COMMERCE COLLEGE VASTRAPUR AHMEDABAD GUJARAT-380015
10	AHMEDABAD	0922 R	ANKLESHWAR	COORDINATOR IGNOU RECOG. STUDY CENTRE ANKLESHWAR IND. DEV. SOCIETY PLOT NO. 910 GIDC ESTATE ANKLESHWAR GUJARAT-390002
11	AHMEDABAD	2901	DAMAN & DIU	COORDINATOR IGNOU STUDY CENTRE DAMAN GOVERNMENT ARTS COLLEGE DAMAN & DIU DAMAN & DIU-396210
12	AHMEDABAD	09132 D	SABARMATI	COORDINATOR IGNOU SPCL STUDY CENTRE CENTRAL PRISON SABARMATI AHMEDABAD GUJARAT-380027
13	ALIGARH RC Code : 47	2702	AGRA	COORDINATOR IGNOU STUDY CENTRE ST. JOHN'S COLLEGE AGRA FORT, AGRA UTTAR PRADESH-282002
14	ALIGARH	2713	ALIGARH	COORDINATOR IGNOU STUDY CENTRE ALIGARH MUSLIM UNIVERSITY ALIGARH UTTAR PRADESH-202002
15	ALIGARH	2714	MORADABAD	COORDINATOR IGNOU STUDY CENTRE HINDU COLLEGE STATION ROAD MORADABAD

REGION-WISE LIST OF STUDY CENTRES

SL. NO.	REGIONAL CENTRE	CODE OF STUDY CENTRE & CATEGORY	PLACE OF STUDY	ADDRESS OF THE IGNOU STUDY CENTRE
16	ALIGARH	2764	MATHURA	UTTAR PRADESH-244001 COORDINATOR IGNOU STUDY CENTRE BABU SHIVNATH AGRAWAL COLLEGE MATHURA UTTAR PRADESH-281004
17	BANGALORE RC Code : 13	1301	BANGALORE	COORDINATOR IGNOU STUDY CENTRE BES COLLEGE OF ARTS & SCIENCE IV 'T' BLOCK JAYANAGAR BANGALORE KARNATAKA-560011
18	BANGALORE	1302	MANGALORE	COORDINATOR IGNOU STUDY CENTRE ST. ALOYSIUS COLLEGE KODIALBAIL MANGALORE KARNATAKA-575003
19	BANGALORE	1305	MYSORE	COORDINATOR IGNOU STUDY CENTRE VIDYAVARDHAKA LAW COLLEGE SHESHADRI IYER ROAD MYSORE KARNATAKA-570021
20	BANGALORE	1309	BANGALORE	COORDINATOR IGNOU STUDY CENTRE AL-AMEEN ARTS SCI. & COM. COL. HOSUR ROAD NEAR LAL BAGH MAIN GATE BANGALORE KARNATAKA-560002
21	BANGALORE	1311	DEVANGERE	COORDINATOR IGNOU STUDY CENTRE BAPUJI INSTT. OF ENGG & TECH. SHAMANUR ROAD DAVANGERE KARNATAKA-577004
22	BANGALORE	1314	BANGALORE	COORDINATOR IGNOU STUDY CENTRE BANGALORE INSTT. OF TECHNOLOGY K.R. ROAD V.V. PURAM BANGALORE KARNATAKA-560004

REGION-WISE LIST OF STUDY CENTRES

SL. NO.	REGIONAL CENTRE	CODE OF STUDY CENTRE & CATEGORY	PLACE OF STUDY	ADDRESS OF THE IGNOU STUDY CENTRE
23	BANGALORE	1319	TUMKUR	COORDINATOR IGNOU STUDY CENTRE SRI SIDDARTHA INSTT. OF TECH TUMKUR KARNATAKA-572105
24	BANGALORE	1320	BANGALORE	COORDINATOR IGNOU STUDY CENTRE GOVERNMENT SCIENCE COLLEGE NRUPATHUNGA ROAD BANGALORE KARNATAKA-560001
25	BANGALORE	1344 R	BANGALORE	COORDINATOR IGNOU STUDY CENTRE CMR INSTT. OF MNGMT.STUDIES 2079, 2ND CROSS, 3RD BLOCK HENNR BNSWLI LAYOUT, KALYANGR BANGALORE KARNATAKA
26	BANGALORE	1388 P	BANGALORE	PROG I/C IGNOU PROG STUDY CENTRE ICFAI BUSINESS SCHOOL SRINIVASA INDUSTRIAL ESTATE KANAKAPURA ROAD BANGALORE KARNATAKA-560062
27	BANGALORE	13129	BANGALORE	COORDINATOR IGNOU STUDY CENTRE SURANA COLLEGE CENTRE FOR PG STUDIES 17 TUMKUR MYSORE RING RD KENGERI SATELLITE TOWN BANGALORE, KARNATAKA
28	BHAGALPUR RC Code : 82	0505	BHAGALPUR	COORDINATOR IGNOU STUDY CENTRE MARWARI COLLEGE (T.M. BHAGALPUR UNIVERSITY) BHAGALPUR BIHAR-812007
29	BHOPAL RC Code : 15	1501	BHOPAL	COORDINATOR IGNOU STUDY CENTRE MOTILAL VIGYAN MAHAVIDYALAYA BHOPAL MADHYA PRADESH-462008
30	BHOPAL	1504	GWALIOR	COORDINATOR IGNOU STUDY CENTRE JIWAJI UNIVERSITY GWALIOR

REGION-WISE LIST OF STUDY CENTRES

SL. NO.	REGIONAL CENTRE	CODE OF STUDY CENTRE & CATEGORY	PLACE OF STUDY	ADDRESS OF THE IGNOU STUDY CENTRE
31	BHOPAL	1506	INDORE	MADHYA PRADESH-474011 COORDINATOR IGNOU STUDY CENTRE HOLKAR SCIENCE COLLEGE INDORE MADHYA PRADESH-452001
32	BHOPAL	1516	UJJAIN	COORDINATOR IGNOU STUDY CENTRE VIKRAM UNIVERSITY UJJAIN MADHYA PRADESH-456010
33	BHOPAL	1519	RAJGARH	COORDINATOR IGNOU STUDY CENTRE GOVERNMENT BOYS PG COLLEGE RAJGARH MADHYA PRADESH-465661
34	BHOPAL	15219	INDORE	COORDINATOR IGNOU STUDY CENTRE INDIAN INSTITUTE OF MANAGEMENT PRABANDH SHIKHAR RAU-PITHMPUR ROAD INDORE-MP-453556
35	BHUBANESHWAR RC Code : 21	2101	BHUBANESHWAR	COORDINATOR IGNOU STUDY CENTRE KALINGA INSTT OF INDL. TECH PATIA BHUBANESHWAR ORISSA-751024
36	BHUBANESHWAR	2103	ROURKELA	COORDINATOR IGNOU STUDY CENTRE GOVERNMENT COLLEGE ROURKELA ORISSA-796004
37	BHUBANESHWAR	2104	BERHAMPUR	COORDINATOR IGNOU STUDY CENTRE KHALIKOTE COLLEGE GANJAM BERHAMPUR ORISSA-760001
38	BHUBANESHWAR	2106	BALASORE	COORDINATOR IGNOU STUDY CENTRE FAKIR MOHAN COLLEGE BALASORE, ORISSA-756001

REGION-WISE LIST OF STUDY CENTRES

SL. NO.	REGIONAL CENTRE	CODE OF STUDY CENTRE & CATEGORY	PLACE OF STUDY	ADDRESS OF THE IGNOU STUDY CENTRE
39	BHUBANESHWAR	2108	SAMBALPUR	COORDINATOR IGNOU STUDY CENTRE GANGADHAR MEHER COLLEGE SAMBALPUR ORISSA-768004
40	BHUBANESHWAR	2191	CUTTACK	COORDINATOR IGNOU STUDY CENTRE BOSE SCHOOL OF ENGINEERING GOVT. OF ORISSA POLYTECHNIC AT-JOBRA, PO SCB MED.COLL. DT. CUTTACK ORISSA-753007
41	BIJAPUR RC Code : 85	1304	GULBARGA	COORDINATOR IGNOU STUDY CENTRE GULBARGA UNIVERSITY GULBARGA UNIVERSITY CAMPUS GULBARGA KARNATAKA-585106
42	BIJAPUR	1310	BELLARY	COORDINATOR IGNOU STUDY CENTRE VEERA SAIVA COLLEGE CANTONMENT BELLARY KARNATAKA-583101
43	BIJAPUR	13113	BELLARY	COORDINATOR IGNOU STUDY CENTRE O P JINDAL CENTRE OPP TO POLICE QUARTERS VIDYANAGAR PO, TORNAGAIU BELLARY KARNATAKA-583275
44	CHANDIGARH RC Code : 06	0601	CHANDIGARH	COORDINATOR IGNOU STUDY CENTRE PUNJAB UNIVERSITY DEPT. OF CORESSPONDENCE COURSE CHANDIGARH CHANDIGARH-160017
45	CHANDIGARH	0602	CHANDIGARH	COORDINATOR IGNOU STUDY CENTRE DAV COLLEGE SECTOR 10 CHANDIGARH CHANDIGARH-160011

REGION-WISE LIST OF STUDY CENTRES

SL. NO.	REGIONAL CENTRE	CODE OF STUDY CENTRE & CATEGORY	PLACE OF STUDY	ADDRESS OF THE IGNOU STUDY CENTRE
46	CHANDIGARH	1036	AMBALA	COORDINATOR IGNOU STUDY CENTRE M.D.S.D. GIRLS COLLEGE AMBALA CITY HARYANA-134002
47	CHANDIGARH	2203	PATIALA	COORDINATOR IGNOU STUDY CENTRE PUNJABI UNIVERSITY ARTS BLOCK - III TOP FLOOR PATIALA PUNJAB-147002
48	CHENNAI RC Code : 25	2501	CHENNAI	COORDINATOR IGNOU STUDY CENTRE DDGD VAISHNAVA COLLEGE 445, E.V.R. PERIYAR HIGH ROAD ARUMBAKKAM CHENNAI TAMILNADU-600106
49	CHENNAI	2506	SALEM	COORDINATOR IGNOU STUDY CENTRE THYAGARAJAR POLYTECHNIC P B NO. 523, SALEM TAMILNADU-636005
50	CHENNAI	2532	THIRUVELLORE	COORDINATOR IGNOU STUDY CENTRE JAYA COLLEGE OF ARTS & SCIENCE MTH ROAD TIRUNINRAVUR THIRUVELLORE TAMILNADU-602024
51	CHENNAI	2534	HOSUR	COORDINATOR IGNOU STUDY CENTRE ER. PERUMAL MANIMEKALAI P'NIC KRISHNAGIRI HIGHWAYS KONERIPALLI, HOSUR TAMILNADU-635117
52	CHENNAI	2543 D	NAMAKKAL	COORDINATOR IGNOU SPL STUDY CENTRE-SC/ST C.R.S.T.C., 4/38, DR. SANKARAN ROAD GANDHI NAGAR NAMAKKAL TAMILNADU-637001 04286-229272

REGION-WISE LIST OF STUDY CENTRES

SL. NO.	REGIONAL CENTRE	CODE OF STUDY CENTRE & CATEGORY	PLACE OF STUDY	ADDRESS OF THE IGNOU STUDY CENTRE
53	CHENNAI	2564	TIRUCHENGODE	COORDINATOR IGNOU STUDY CENTRE K.S. RANGASAMY COLLEGE OF TECH KSR KALVI NAGAR THOKKAVADI POST (NAMAKKAL DT.) THIRUCHENGODE TAMILNADU-637209
54	CHENNAI	2570	PERAMBALUR	COORDINATOR IGNOU STUDY CENTRE THANTHAI HANS ROEVER COLLEGE PERAMBALUR TAMILNADU-621212
55	CHENNAI	2593	VELLORE	COORDINATOR IGNOU STUDY CENTRE VOORHEES COLLEGE OFFICERS LINE, VELLORE TAMILNADU-632001
56	CHENNAI	3101	PONDICHERRY	COORDINATOR IGNOU STUDY CENTRE ACADEMIC STAFF COLLEGE CENTRAL UNIVERSITY LAWSPET, PUDUCHERRY PUDUCHERY-605008
57	CHENNAI	25160	CHENNAI	COORDINATOR IGNOU STUDY CENTRE SHRI S S S JAIN COLLEGE(WOMEN) NO 3 MADLEY ROAD T NAGAR, CHENNAI TAMILNADU-600017
58	CHENNAI	25180 P	CHENNAI	PROG I/C IGNOU PROG STUDY CENTRE ICFAI BUSINESS SCHOOL HARINI TOWERS,NO7 CONRAN SMITH ROAD,GOPALAPURAM ROYAPETTAH CHENNAI TAMILNADU-600086
59	COCHIN RC Code : 14	1402	COCHIN	COORDINATOR IGNOU STUDY CENTRE SACRED HEART COLLEGE THEVARA, COCHIN KERALA-682013
60	COCHIN	1407	TRICHUR	COORDINATOR IGNOU STUDY CENTRE SREE KERALA VERMA COLLEGE TRICHUR KERALA-680001

REGION-WISE LIST OF STUDY CENTRES

SL. NO.	REGIONAL CENTRE	CODE OF STUDY CENTRE & CATEGORY	PLACE OF STUDY	ADDRESS OF THE IGNOU STUDY CENTRE
61	COCHIN	1435 D	ALLEPPEY	COORDINATOR IGNOU SPL STUDY CENTRE-RA IMPERIAL COLLEGE MICHEL JUNCTION MAVELIKKARA, ALLEPPEY KERALA
62	COCHIN	14156	PALAKKAD	COORDINATOR IGNOU STUDY CENTRE PALGHAT MANAGEMENT ASSOCIATION MANAGEMENT HOUSE 066 NH 47 MARUTHARODE PALAKKAD KERALA-678007
63	COCHIN	14157	KOCHI	COORDINATOR IGNOU SPL STUDY CENTRE R.M.A.S 3RD FLOOR GCDA SHOPPIN COMPLEX MARINE DRIVE, KOCHI KERALA-682031
64	COCHIN	14165 D	THRIKKAKARA	COORDINATOR IGNOU SPCL STUDY CENTRE BHARATA MATA COLLEGE THRIKKAKARA P.O. COCHIN KERALA-682021
65	COCHIN	14166	COCHIN	COORDINATOR IGNOU STUDY CENTRE THE COCHIN COLLEGE COCHIN-682002
66	DARBHANGA RC Code : 46	0504	MUZAFFARPUR	COORDINATOR IGNOU STUDY CENTRE BRA BIHAR UNIVERSITY LIBRARY CAMPUS MUZAFFARPUR BIHAR-842001
67	DARBHANGA	0557	MADHUBANI	COORDINATOR IGNOU STUDY CENTRE RAMKRISHNA COLLEGE MADHUBANI BIHAR-847211
68	DEHRADUN RC Code : 31	2705	DEHRADUN	COORDINATOR IGNOU STUDY CENTRE D.A.V. PG COLLEGE D A V COLLEGE ROAD DEHRADUN UTTRANCHAL-248001

REGION-WISE LIST OF STUDY CENTRES

SL. NO.	REGIONAL CENTRE	CODE OF STUDY CENTRE & CATEGORY	PLACE OF STUDY	ADDRESS OF THE IGNOU STUDY CENTRE
69	DEHRADUN	2711	HALDWANI	COORDINATOR IGNOU STUDY CENTRE MB GOVERNMENT PG COLLEGE HALDWANI UTTRANCHAL-263141
70	DEHRADUN	2717	ALMORA	COORDINATOR IGNOU STUDY CENTRE KUMAON UNIVERSITY ALMORA UTTRANCHAL-263601
71	DEHRADUN	2749	MUZAFFARNAGAR	COORDINATOR IGNOU STUDY CENTRE S.D. COLLEGE BHOPA ROAD MUZAFFAR NAGAR UTTAR PRADESH-251001
72	DEHRADUN	3702	SAHARANPUR	COORDINATOR IGNOU STUDY CENTRE MAHARAJ SINGH COLLEGE SAHARANPUR UTTAR PRADESH-247001
73	DEHRADUN	3715	PANTNAGAR	COORDINATOR IGNOU STUDY CENTRE G B PANT UNIVERSITY AGRICULTURE & TECHNOLOGY PANTNAGAR DIST U.S.NAGAR UTTARKHAND-263145
74	DEHRADUN	47002	NAJIBABAD	COORDINATOR IGNOU STUDY CENTRE SAHU JAIN P G COLLEGE NAJIBAD UTTAR PRADESH-246763
75	DELHI 1 RC Code : 07	0706	DELHI	COORDINATOR IGNOU STUDY CENTRE SCH OF AVIATION SCIENCE & TECH DELHI FLYING CLUB LIMITED SAFDARJUNG AIRPORT NEW DELHI-110003
76	DELHI 1	0713	DELHI	COORDINATOR IGNOU STUDY CENTRE JESUS & MARY COLLEGE UNIVERSITY OF DELHI CHANAKYAPURI NEW DELHI-110021

REGION-WISE LIST OF STUDY CENTRES

SL. NO.	REGIONAL CENTRE	CODE OF STUDY CENTRE & CATEGORY	PLACE OF STUDY	ADDRESS OF THE IGNOU STUDY CENTRE
77	DELHI 1	0747	DELHI	COORDINATOR IGNOU STUDY CENTRE ALLIANCE EDUCARE & RES PVT LTD C/O LAXMAN PUBLIC SCHOOL HAUZ KHAZ ENCLAVE, HAUZ KHAZ NEW DELHI-110016
78	DELHI 1	0757	DELHI	COORDINATOR IGNOU STUDY CENTRE AMITY INSTITUTE OF EDUCATION AMITY CAMPUS, 44 M-BLOCK SAKET NEW DELHI-110017
79	DELHI 1	1007	FARIDABAD	COORDINATOR IGNOU STUDY CENTRE PT. J.L. NEHRU GOVT. COLLEGE SECTOR - 16A FARIDABAD HARYANA-121001
80	DELHI 1	1042	FARIDABAD	COORDINATOR IGNOU STUDY CENTRE GOVT COLLEGE FOR WOMEN SECTOR 16-17, FARIDABAD HARYANA
81	DELHI 1	07103	DELHI	COORDINATOR IGNOU STUDY CENTRE COLLEGE OF VOCATIONAL STUDIES SHEIKH SARAI, PHASE II NEW DELHI-110017
82	DELHI 1	07153	DELHI	COORDINATOR IGNOU STUDY CENTRE MODI ACADEMIC INTERNATIONAL INSITUTE, 24-A LAJPAT NAGAR IV RING ROAD NEW DELHI-110024
83	DELHI 2 RC Code : 29	0712	DELHI	COORDINATOR IGNOU STUDY CENTRE VIVEKANAND MAHILA COLLEGE VIVEK VIHAR NEW DELHI-110032
84	DELHI 2	0731	DELHI	COORDINATOR IGNOU STUDY CENTRE PC TRAINING INSTITUTE PCTI HOUSE, UU-11 NORTH PITAMPURA NEW DELHI-110034

REGION-WISE LIST OF STUDY CENTRES

SL. NO.	REGIONAL CENTRE	CODE OF STUDY CENTRE & CATEGORY	PLACE OF STUDY	ADDRESS OF THE IGNOU STUDY CENTRE
85	DELHI 2	0769	DELHI	COORDINATOR IGNOU STUDY CENTRE SHYAM LAL COLLEGE G.T. ROAD, SHAHDARA DELHI-110032
86	DELHI 2	0772	DELHI	COORDINATOR IGNOU STUDY CENTRE ACHARYA INST OF PROF. STUDIES 2647, HUDSON LANE NORTH CAMPUS DELHI-110009
87	DELHI 2	0776 P	DELHI	PROG. I/C IGNOU PROG. STUDY CENTRE UNIV. INSTT OF COMPUTERS & TEC 'A' BLOCK, UPS CAMPUS PREET VIHAR NEW DELHI-110092
88	DELHI 2	0784	ROHINI	COORDINATOR IGNOU STUDY CENTRE BITCOM SERVICES (P) LTD. PLOT NOT 366,3RD FLOOR KOHAT ENCLAVE DELHI-110034
89	DELHI 2	29010	DELHI	COORDINATOR IGNOU STUDY CENTRE TECNIA INSTITUE, 5 PSP MADHUBAN CHOWK ROHINI DELHI-110085
90	DELHI 2	29020	DELHI	COORDINATOR IGNOU STUDY CENTRE VIVEKANANDA INST.PROF.STUDIES (VIPS) G-1-12 G T KARNAL ROAD NEW AZADPUR METRO STATION NEW DELHI-110033
91	DELHI 2	29032	DELHI	COORDINATOR IGNOU STUDY CENTRE JAGANNATH INSTITUTE OF MANAGEMENTY SCIENCES PLOT NO 2 COMMUNITY CENTRE SECTOR 3 ROHINI NEW DELHI-110058
92	DELHI 2	29038	PATPARGANJ	COORDINATOR IGNOU STUDY CENTRE GOVINDAM BUSINESS SCHOOL 514, INDUSTRIAL ESTATE PATPARGANJ DELHI-110092

REGION-WISE LIST OF STUDY CENTRES

SL. NO.	REGIONAL CENTRE	CODE OF STUDY CENTRE & CATEGORY	PLACE OF STUDY	ADDRESS OF THE IGNOU STUDY CENTRE
93	DELHI 3 RC Code: 38	0701	DELHI	COORDINATOR IGNOU STUDY CENTRE SHYAMA PRASAD MUKHERJEE COLL. FOR WOMEN, PUNJABI BAGH (WEST) NEW DELHI-110026
94	DELHI 3	0709	DELHI	COORDINATOR IGNOU STUDY CENTRE RAMLAL ANAND COLLEGE BENITO JUAREZ ROAD NEW DELHI-110021
95	DELHI 3	0719	DELHI	COORDINATOR IGNOU STUDY CENTRE TIHAR CENTRAL JAIL NO. 3, TIHAR JAIL HARI NAGAR (ONLY FOR INMATES) NEW DELHI-110064
96	DELHI 3	0737	DELHI	COORDINATOR IGNOU STUDY CENTRE ATMA RAM SANATAN DHARMA COLLEG UNIVERSITY OF DELHI DHAULA KHAN NEW DELHI-110021
97	DELHI 3	0762	DELHI	COORDINATOR IGNOU STUDY CENTRE MAHARAJA SURAJMAL INSTITUTE C - 4, JANAKPURI NEW DELHI-110058
98	DELHI 3	1006	GURGAON	COORDINATOR IGNOU STUDY CENTRE DRONACHARYA GOVERNMENT COLLEGE GURGAON HARYANA-122001
99	DELHI 3	1045	GURGAON	COORDINATOR IGNOU STUDY CENTRE GOVT GIRLS COLLEGE SECTOR 14, GURGAON HARYANA
100	DELHI 3	07109	DELHI	COORDINATOR IGNOU STUDY CENTRE INSTITUTE OF PUBLIC HEALTH & HYGIENE,RZ A-44, MAHIPALPUR DELHI-110037

REGION-WISE LIST OF STUDY CENTRES

SL. NO.	REGIONAL CENTRE	CODE OF STUDY CENTRE & CATEGORY	PLACE OF STUDY	ADDRESS OF THE IGNOU STUDY CENTRE
101	DELHI 3	07111	DELHI	COORDINATOR IGNOU STUDY CENTRE DOT COM ACADEMIA N R CONVENT SCHOOL PREMISES NANGLOI NILOTHI MAIN NANGLOI NAJAFGARH ROAD NEW DELHI-110041
102	DELHI 3	07127 D	DELHI	COORDINATOR IGNOU SPL STUDY CENTRE INST. OF VOCATIONAL STUDIES C/O BASWA INTERNATIONAL SCHOOL SETCOR 23 DWARKA NEW DELHI-110075
103	DELHI 3	38015 D	GURGAON	COORDINATOR IGNOU SPL STUDY CENTRE (IN) DISTRICT JAIL BHONDSI, GURGAON HARYANA-122002
104	GUWAHATI RC Code : 04	0401	GUWAHATI	COORDINATOR IGNOU STUDY CENTRE GUWAHATI UNIVERSITY GUWAHATI ASSAM-781014
105	GUWAHATI	0404	BONGAIGAON	COORDINATOR IGNOU STUDY CENTRE BIRJHORA MAHAVIDYALAYA BONGAIGAON ASSAM-783380
106	HYDERABAD RC Code: 01	0101	HYDERABAD	COORDINATOR IGNOU STUDY CENTRE PMR DEGREE COLLEGE CHINTALAKUNTA CHECK POST L.B. NAGAR, HYDERABAD ANDHRA PRADESH-500074
107	HYDERABAD	0105	WARANGAL	COORDINATOR IGNOU STUDY CENTRE LAL BAHADUR COLLEGE WARANGAL ANDHRA PRADESH-506007
108	HYDERABAD	01131	HYDERABAD	COORDINATOR IGNOU STUDY CENTRE AURORA'S BUSINESS SCHOOL 6-3-456/18 & 19 DWARAKPURI COLONY NEAR NIMS PUNJAGUTTA, HYDERABAD ANDHRA PRADESH-500082

REGION-WISE LIST OF STUDY CENTRES

SL. NO.	REGIONAL CENTRE	CODE OF STUDY CENTRE & CATEGORY	PLACE OF STUDY	ADDRESS OF THE IGNOU STUDY CENTRE
109	IMPHAL RC Code : 17	1701	IMPHAL	COORDINATOR IGNOU STUDY CENTRE MANIPUR UNIVERSITY UNIVERSITY CAMPUS CANCHIPUR, IMPHAL MANIPUR-795003
110	IMPHAL	1723 P	IMPHAL	PROG I/C IGNOU PROG STUDY CENTRE INSITUTION FOR TRADITIONAL ARTS & CULTURE KHURAI SAJOR LEIKAI IMPHAL EAST PO LAMLONG BAZAR 795010
111	IMPHAL	1724 P	MOIRANG	PROG I/C IGNOU PROG STUDY CENTRE PANTHOIBI THANG TA & JAGOI SINDAM SHANGLN MOIRANG KHUNOU PO MOIRANG MOIRANG BISHNUPUR DIST. MANIPUR-795133
112	IMPHAL	1725 P	PHOIJING	PROG I/C IGNOU PROG STUDY CENTRE PUBLIC THEATER ARTISTES ASSO. PHOIJING PO& PS NAMBOL BISHNUPUR DIST MANIPUR-795134
113	ITANAGAR RC Code : 03	0301	ITANAGAR	COORDINATOR IGNOU STUDY CENTRE D.N.GOVERNMENT COLLEGE ITANAGAR ITANAGAR ARUNACHAL PRADESH-791113
114	JABALPUR RC Code : 41	1502	JABALPUR	COORDINATOR IGNOU STUDY CENTRE RANI DURGAWATI UNIVERSITY JABALPUR MADHYA PRADESH-482001
115	JABALPUR	1515	CHHINDWARA	COORDINATOR IGNOU STUDY CENTRE DANIELSON DEGREE COLLEGE CHHINDWARA MADHYA PRADESH-480001
116	JABALPUR	41015 D	TILHARI	COORDINATOR IGNOU SPL STUDY CENTRE (M) XAIVER INST. OF MANAGEMENT 4TH MILE MANDALA ROAD TILHARI, JABALPUR MADHYA PRADESH-482021

REGION-WISE LIST OF STUDY CENTRES

SL. NO.	REGIONAL CENTRE	CODE OF STUDY CENTRE & CATEGORY	PLACE OF STUDY	ADDRESS OF THE IGNOU STUDY CENTRE
117	JABALPUR	41017 D	SINGRAULI	COORDINATOR IGNOU SPCL STUDY CENTRE SINGRAULI IST OF TEC EDU(SITE) CIRCUIT HOUSE ROAD SINGRAULI MADHYA PRADESH-486889
118	JAIPUR RC Code : 23	2303	KOTA	COORDINATOR IGNOU STUDY CENTRE KOTA ENGINEERING COLLEGE RAWAT BHATA ROAD KOTA RAJASTHAN-324010
119	JAIPUR	2306	AJMER	COORDINATOR IGNOU STUDY CENTRE GOVT COLLEGE AJMER RAJASTHAN-305001
120	JAIPUR	2308	ALWAR	COORDINATOR IGNOU STUDY CENTRE RAJRISHI COLLEGE ALWAR RAJASTHAN-301001
121	JAIPUR	2312	LAKSHMANGARH	COORDINATOR IGNOU STUDY CENTRE SHRI BHAGWANDAS TODI PG COLLEG (SIKAR), LAKSHMANGARH RAJASTHAN-332311
122	JAIPUR	2320 D	JAIPUR	COORDINATOR IGNOU SPL STUDY CENTRE-RA INDIA INT. INSTT. OF MGT. SECTOR-12, MAHAVEER MARG MANSAROVAR, JAIPUR RAJASTHAN-302020
123	JAIPUR	2322 D	HANUMANGARH	COORDINATOR IGNOU SPL. STUDY CENTRE-RA NEHRU MEMORIAL LAW COLLEGE HANUMANGARH TOWN HANUMANGARH RAJASTHAN-335513
124	JAIPUR	2328 D	NAWALGARH	COORDINATOR IGNOU SPL. STUDY CENTRE-RA SETH G.B. PODAR COLLEGE RAMBILAS PODAR ROAD NAWALGARH RAJASTHAN-333042

REGION-WISE LIST OF STUDY CENTRES

SL. NO.	REGIONAL CENTRE	CODE OF STUDY CENTRE & CATEGORY	PLACE OF STUDY	ADDRESS OF THE IGNOU STUDY CENTRE
125	JAIPUR	2347 P	JAIPUR	PROG. I/C IGNOU PROG. STUDY CENTRE OMEGA COMPUTERE EDN. INSTITUTE C-115, SAVITRI PATH BAPU NAGAR, JAIPUR RAJASTHAN
126	JAIPUR	23102 D	JAIPUR	MR YOGESH KUMAR JAKHAR COORDINATOR IGNOU SPL STUDY CENTRE VIVEKANANDA INST.PROF.STUDIES VIPS, 178 ANAND NAGAR SIRSI ROAD KHATIPURA JAIPUR RAJASTHAN 0141-3122675 vipsjaipur.178@gmail.com,
127	JAIPUR	23104 P	JAIPUR	PROG I/C IGNOU PROG STUDY CENTER SANGEET ASHRAM 1-A 98 SHIVSHAKTI COLONY SHASTRI NAGAR, JAIPUR RAJASTHAN-302016
128	JAMMU RC Code : 12	1201	JAMMU	COORDINATOR IGNOU STUDY CENTRE UNIVERSITY OF JAMMU JAMMU TAWI J & K-180001
129	JAMMU	1206	KATHUA	COORDINATOR IGNOU STUDY CENTRE GOVERNMENT DEGREE COLLEGE DEPARTMENT OF GEOGRAPHY KATHUA, J & K
130	JAMMU	1207	RAJOURI	COORDINATOR IGNOU STUDY CENTRE GOVERNMENT DEGREE COLLEGE RAJOURI, J & K-185131
131	JAMMU	1208	POONCH	COORDINATOR IGNOU STUDY CENTRE GOVERNMENT DEGREE COLLEGE POONCH, J & K
132	JAMMU	1250	UDHAMPUR	COORDINATOR IGNOU STUDY CENTRE GOVT. DEGREE COLLEGE (BOYS) UDHAMPUR, J & K

REGION-WISE LIST OF STUDY CENTRES

SL. NO.	REGIONAL CENTRE	CODE OF STUDY CENTRE & CATEGORY	PLACE OF STUDY	ADDRESS OF THE IGNOU STUDY CENTRE
133	JODHPUR RC Code : 88	2302	UDAIPUR	COORDINATOR IGNOU STUDY CENTRE VIDYA BHAWAN RURAL INSTITUTE BADGAON ROAD, UDAIPUR RAJASTHAN-313004
134	JODHPUR	2304	JODHPUR	COORDINATOR IGNOU STUDY CENTRE ONKARMAL SOMANI COLLEGE OF COM JODHPUR RAJASTHAN-342008
135	JODHPUR	2305	BIKANER	COORDINATOR IGNOU STUDY CENTRE BJS RAMPURIA JAIN COLLEGE J N VYAS NAGAR, BIKANER RAJASTHAN-334003
136	JODHPUR	2321 D	JODHPUR	COORDINATOR IGNOU SPL STUDY CENTRE-W AB MEMORIAL SECONDARY SCHOOL E-43, SHASTRI NAGAR, JODHPUR RAJASTHAN-342003
137	JODHPUR	2370	PRATAPGARH	COORDINATOR IGNOU STUDY CENTRE GOVT PG COLLEGE DIST PRATAPGARH RAJASTHAN
138	JORHAT RC Code : 37	0407	DIBRUGARH	COORDINATOR IGNOU STUDY CENTRE DIBRUGARH UNIVERSITY DEPT. OF APPLIED GEOLOGY DIBRUGARH ASSAM-786004
139	JORHAT	0410	JORHAT	COORDINATOR IGNOU STUDY CENTRE C.K.B. COMMERCE COLLEGE JORHAT ASSAM-785001
140	JORHAT	0413	NORTH LAKHIMPUR	COORDINATOR IGNOU STUDY CENTRE LAKHIMPUR COMMERCE COLLEGE NORTH LAKHIMPUR ASSAM-787001
141	JORHAT	0455	GUWAHATI	COORDINATOR IGNOU STUDY CENTRE DARRANG COLLEGE TEZPUR DISTRICT SONITPUR, ASSAM-784001

REGION-WISE LIST OF STUDY CENTRES

SL. NO.	REGIONAL CENTRE	CODE OF STUDY CENTRE & CATEGORY	PLACE OF STUDY	ADDRESS OF THE IGNOU STUDY CENTRE
142	KARNAL RC Code : 10	1002	SONEPAT	COORDINATOR IGNOU STUDY CENTRE HINDU COLLEGE, SONEPAT HARYANA-131001
143	KARNAL	1005	ROHTAK	COORDINATOR IGNOU STUDY CENTRE CHOTU RAM COLLEGE OF EDUCATION ROHTAK HARYANA-124001
144	KARNAL	1009	HISSAR	COORDINATOR IGNOU STUDY CENTRE GOVERNMENT P.G. COLLEGE HISSAR HARYANA-125001
145	KARNAL	1059	PANIPAT	COORDINATOR IGNOU STUDY CENTRE I B POST GRADUATE COLLEGE G T RAOD, PANIPAT HARYANA-132103
146	KHANNA RC Code : 22	2204	BHATINDA	COORDINATOR IGNOU STUDY CENTRE MGDAV COLLEGE BHILWADA ROAD, BHATINDA PUNJAB-151001
147	KHANNA	2205	AMRITSAR	COORDINATOR IGNOU STUDY CENTRE DAV COLLEGE OF EDUCATION AMRITSAR PUNJAB-143001
148	KHANNA	2206	LUDHIANA	COORDINATOR IGNOU STUDY CENTRE GURU NANAK GIRLS COLLEGE MODEL TOWN, LUDHIANA PUNJAB-141008
149	KHANNA	2210 D	LUDHIANA	COORDINATOR IGNOU SPL STUDY CENTRE (M) EVEREST PUBLIC SR. SEC. SCHOO MOTI NAGAR, LUDHIANA PUNJAB
150	KHANNA	2211	KHANNA	COORDINATOR IGNOU STUDY CENTRE A.S. COLLEGE SAMRALA ROAD KHANNA, LUDHIANA PUNJAB-141402

REGION-WISE LIST OF STUDY CENTRES

SL. NO.	REGIONAL CENTRE	CODE OF STUDY CENTRE & CATEGORY	PLACE OF STUDY	ADDRESS OF THE IGNOU STUDY CENTRE
151	KHANNA	2212	JALANDHAR CITY	COORDINATOR IGNOU STUDY CENTRE DOBA COLLEGE TANDA ROAD JALANDHAR CITY PUNJAB
152	KHANNA	2225	MANSA	COORDINATOR IGNOU STUDY CENTRE NEHRU MEMORIAL GOVT. COLLEGE MANSA, DT. MANSA PUNJAB-151505
153	KOHIMA RC Code : 20	2001	KOHIMA	COORDINATOR IGNOU STUDY CENTRE MODERN COLLEGE DZUVURU AREA POST BOX - 405 KOHIMA NAGALAND-797001
154	KOLKATA RC Code : 28	2801	KOLKATA	COORDINATOR IGNOU STUDY CENTRE ISHWAR CHANDRA PATHABHAVAN 299 ACHARYA PRAFULA CHANDRA RD KOLKATA WEST BENGAL-700009
155	KOLKATA	2802	KOLKATA	COORDINATOR IGNOU STUDY CENTRE ST. XAVIER'S COLLEGE 30 PARK STREET, KOLKATA WEST BENGAL-700016
156	KOLKATA	2803	KANCHRAPARA	COORDINATOR IGNOU STUDY CENTRE RAILWAY TECHNICAL SCHOOL KANCHRAPARA 24 PARGANAS (N) WEST BENGAL-743145
157	KOLKATA	2804	KOLKATA	COORDINATOR IGNOU STUDY CENTRE ASWINI DATTA MEMORIAL COLLEGE 94/2, PARK CIRCUS KOLKATA WEST BENGAL-700017
158	KOLKATA	2814	KOLKATA	COORDINATOR IGNOU STUDY CENTRE DINABANDHU ANDREWS COLLEGE GARIA P.O., KOLKATA WEST BENGAL-700084

REGION-WISE LIST OF STUDY CENTRES

SL. NO.	REGIONAL CENTRE	CODE OF STUDY CENTRE & CATEGORY	PLACE OF STUDY	ADDRESS OF THE IGNOU STUDY CENTRE
159	KOLKATA	2841	KOLKATA	COORDINATOR IGNOU STUDY CENTRE THE INDIAN INST OF PSYCHOMETRY EVERGREEN PLAZA, II TO V FLOOR 117, BARRACKPORE TRUNK ROAD KOLKATA WEST BENGAL-700035
160	KOLKATA	2854 D	DURGAPUR	COORDINATOR IGNOU SPL. STUDY CENTRE DURGAPUR SOCIETY OF MGT.SCIENC DR. ZAKIR HUSSAIN AVENUE BIDHANNAGAR, DURGAPUR WEST BENGAL-713206
161	KOLKATA	2863	HALDIA	COORDINATOR IGNOU STUDY CENTRE INDIAN CNTR FOR ADV.OF RES.EDU ICARE COMPLEX, PO HATIBERIA HALDIA DISTT. PURBA MEDINIPUR WEST BENGAL-721657
162	KOLKATA	28125 P	JADAVPUR	PROG I/C IGNOU PROG STUDY CENTRE DIVINE INSPIRATION 149 REGENT ESTATE LAYELKA JADAVPUR KOLKATA WEST BENGAL
163	KOLKATA	28126 P	BENTINCK STREET	PROG I/C IGNOU PROG STUDY CENTRE PRAFULLA KANAN DESHAPRIYA VIDYAMANDIR (H.S) KRISHNAPUR V I P ROAD,KESTOPUR KOLKATA WEST BENGAL-700101
164	KORAPUT RC Code : 44	44004 P	BASTAR	PROG I/C IGNOU PROG STUDY CENTRE CHRIST COLLEGE JAGDALPUR, DISTT BASTAR CHHATTISGARH-494001
165	KORAPUT	44023	SUNABEDA	COORDINATOR IGNOU STUDY CENTRE AERONAUTICS COLLEGE SUNABEDA, KORAPUT ODISHA-763002

REGION-WISE LIST OF STUDY CENTRES

SL. NO.	REGIONAL CENTRE	CODE OF STUDY CENTRE & CATEGORY	PLACE OF STUDY	ADDRESS OF THE IGNOU STUDY CENTRE
166	LUCKNOW RC Code : 27	2701	LUCKNOW	COORDINATOR IGNOU STUDY CENTRE JAI NARAIN DEGREE COLLEGE LUCKNOW UTTAR PRADESH-226001
167	LUCKNOW	2704	BAREILLY	COORDINATOR IGNOU STUDY CENTRE BAREILLY COLLEGE P O BOX NO 15, BAREILLY UTTAR PRADESH-243005
168	LUCKNOW	2706	KANPUR	COORDINATOR IGNOU STUDY CENTRE P.P.N. COLLEGE 96/12, MG MARG, KANPUR UTTAR PRADESH-208001
169	LUCKNOW	2712	JHANSI	COORDINATOR IGNOU STUDY CENTRE BIPIN BIHARI PG COLLEGE JHANSI UTTAR PRADESH-284001
170	LUCKNOW	2720	LUCKNOW	COORDINATOR IGNOU STUDY CENTRE LUCKNOW CHRISTIAN COLLEGE DEPTT. OF CHEMISTRY LUCKNOW UTTAR PRADESH-226018
171	LUCKNOW	2724	MANAKAPUR	COORDINATOR IGNOU STUDY CENTRE INDIA TELEPHONES INDIA LTD. E.S.S. PROJECT MANAKAPUR UTTAR PRADESH-271308
172	LUCKNOW	2742 R	RAIBARELI	COORDINATOR IGNOU RECOG STUDY CENTRE NTPC LIMITED UNCHAHAR, RAIBARELI UTTAR PRADESH-229406
173	LUCKNOW	2767	BANDA	COORDINATOR IGNOU STUDY CENTRE JAWAHAR LAL NEHRU (PG) COLLEGE BANDA UTTAR PRADESH-210001

REGION-WISE LIST OF STUDY CENTRES

SL. NO.	REGIONAL CENTRE	CODE OF STUDY CENTRE & CATEGORY	PLACE OF STUDY	ADDRESS OF THE IGNOU STUDY CENTRE
174	MADURAI RC Code : 43	2502	COIMBATORE	COORDINATOR IGNOU STUDY CENTRE G.R.D. COLLEGE OF ARTS & SCI. AVANASHI ROAD CIVIL AERODROME POST COIMBATORE TAMILNADU-641014
175	MADURAI	2503	MADURAI	COORDINATOR IGNOU STUDY CENTRE THIYAGARAJAR COLLEGE POST BOX NO 107 139-140 KAMARAJAR SALAI MADURAI TAMILNADU-625002
176	MADURAI	2504	TIRUCHIRAPALLY	COORDINATOR IGNOU STUDY CENTRE BISHOP HEBER COLLEGE P O BOX 615, TIRUCHIRAPALLY TAMILNADU-620017
177	MADURAI	2551	POLLACHI	COORDINATOR IGNOU STUDY CENTRE SREE RAMU COLL OF ARTS & SCI. ALIYAR ROAD POLLACHI, DISTT.COIMBATORE TAMILNADU-642007
178	MADURAI	43002 P	COIMBATORE	PROG I/C IGNOU PROG STUDY CENTRE SARDAR VALLABHBHAI PATEL INSTITUTE OF TEXTILE MANAGEMENT P.B.NO 1633,NO1483,AVANASHI RD PEELAMEDU,COIMBATORE TAMILNADU-641004
179	MADURAI	43015	MADURAI	COORDINATOR IGNOU MODEL STUDY CENTRE IGNOU REGIONAL CENTRE C S I INSTITUTIONAL CAMPUS PASUMALAI, MADURAI TAMILNADU-625004
180	MUMBAI RC Code : 49	1601	MUMBAI	COORDINATOR IGNOU STUDY CENTRE KJS COLLEGE OF EDUCATION T & R VIDYANAGAR, VIDYA VIHAR GHATKOPAR (E), MUMBAI MAHARASHTRA-400077

REGION-WISE LIST OF STUDY CENTRES

SL. NO.	REGIONAL CENTRE	CODE OF STUDY CENTRE & CATEGORY	PLACE OF STUDY	ADDRESS OF THE IGNOU STUDY CENTRE
181	MUMBAI	1603	MUMBAI	COORDINATOR IGNOU STUDY CENTRE SATHAYE COLLEGE DIXIT ROAD VILE PARLE (E), MUMBAI MAHARASHTRA-400057
182	MUMBAI	1604	MUMBAI	COORDINATOR IGNOU STUDY CENTRE KET'S VG VAZE COLLEGE MITHAGAR ROAD MILAND (E), MUMBAI MAHARASHTRA-400081
183	MUMBAI	1615 R	TARAPUR	COORDINATOR IGNOU RECOG STUDY CENTRE SHRI G.A. LOKSEVA NIDHI P/17, MIDC, TARAPUR MAHARASHTRA-401506
184	MUMBAI	1629 R	VASIND	COORDINATOR IGNOU RECOG STUDY CENTRE JINDAL IRON AND STEEL CO. LTD. VASIND VILLAGE SHAHPUR TALUK THANE DISTRICT MAHARASHTRA-421604
185	MUMBAI	1632	MUMBAI	COORDINATOR IGNOU STUDY CENTRE MAHATMA EDUCATION SOCIETY COMPOSITE COLLEGE CAMPUS, PLOT # 10, SECTOR 16, PODI # 2 NEW PANVEL MAHARASHTRA-410206
186	NAGPUR RC Code : 36	1607	NAGPUR	COORDINATOR IGNOU STUDY CENTRE NAGPUR UNIVERSITY GURU NANAK BHAWAN, NAGPUR MAHARASHTRA-440001
187	NAGPUR	1609	AMRAVATI	COORDINATOR IGNOU STUDY CENTRE AMRAVATI UNIVERSITY TAPOVAN CAMPUS, AMRAVATI MAHARASHTRA-444602
188	NAGPUR	1613	NANDED	COORDINATOR IGNOU STUDY CENTRE PRATIBA NIKETAN MAHA VIDYALAYA PANDAGHAT ROAD VAZIRABAD, NANDED MAHARASHTRA-431610

REGION-WISE LIST OF STUDY CENTRES

SL. NO.	REGIONAL CENTRE	CODE OF STUDY CENTRE & CATEGORY	PLACE OF STUDY	ADDRESS OF THE IGNOU STUDY CENTRE
189	NAGPUR	1614	CHANDRAPUR	COORDINATOR IGNOU STUDY CENTRE CHANDRAPUR ENGINEERING COLLEGE BABUPETH, CHANDRAPUR MAHARASHTRA-442403
190	NAGPUR	36029	NAGPUR	COORDINATOR IGNOU STUDY CENTRE DR PANJABRAO DESHMUKH INST. OF MANAGEMENT TECH.& RESH(PDIMTR) DHANWAATE NATIONAL COLLEGE CONGRESS NAGAR NAGPUR MAHARASHTRA-400012
191	NAGPUR	36035	AKOLA	COORDINATOR IGNOU STUDY CENTRE SHANKARLAL KHANDELWAL COLLEGE (ARTS,COMMERCE & SCIENCE) GODBOLE PLOT DABKI ROAD DIST AKOLA MAHARASHTRA-444002
192	NAGPUR	36038	GONDIA	COORDINATOR IGNOU STUDY CENTRE DHOTE BANDHU SCIENCE COLLEGE KUDWA ROAD, GONDIA MAHARASHTRA-441614
193	NOIDA RC Code : 39	2707	MODI NAGAR	COORDINATOR IGNOU STUDY CENTRE M.M.P.G. COLLEGE MODI NAGAR, GHAZIABAD UTTAR PRADESH-201204
194	NOIDA	2718	GHAZIABAD	COORDINATOR IGNOU STUDY CENTRE M.M.H. COLLEGE, GHAZIABAD UTTAR PRADESH-201001
195	NOIDA	2728	MEERUT	COORDINATOR IGNOU STUDY CENTRE MEERUT COLLEGE, MEERUT UTTAR PRADESH-250001
196	NOIDA	2730 R	GHAZIABAD	COORDINATOR IGNOU RECOG. STUDY CENTRE N.T.P.C., VIDYUT NAGAR GAUTAM BUDH NAGAR GHAZIABAD UTTAR PRADESH-201001

REGION-WISE LIST OF STUDY CENTRES

SL. NO.	REGIONAL CENTRE	CODE OF STUDY CENTRE & CATEGORY	PLACE OF STUDY	ADDRESS OF THE IGNOU STUDY CENTRE
197	NOIDA	2738	BULANDSHAHR	COORDINATOR IGNOU STUDY CENTRE I.P. (POST GRADUTATE) COLLEGE BULANDSHAHR UTTAR PRADESH-203001
198	NOIDA	2739	NOIDA	COORDINATOR IGNOU STUDY CENTRE GOVERNMENT P.G. COLLEGE SECTOR - 39, NOIDA UTTAR PRADESH-201303
199	NOIDA	2761	HAPUR	COORDINATOR IGNOU STUDY CENTRE S.S.V. (P.G.) COLLEGE, HAPUR DISTT. GHAZIABAD UTTAR PRADESH
200	NOIDA	2798	BARAUT	COORDINATOR IGNOU STUDY CENTRE J.V. POST GRADUATE COLLEGE BARAUT, BAGHPAT UTTAR PRADESH-250611
201	NOIDA	2799	MEERUT	COORDINATOR IGNOU STUDY CENTRE D.N. POST GRADUATE COLLEGE MEERUT UTTAR PRADESH-250005
202	NOIDA	07107	DELHI	COORDINATOR IGNOU STUDY CENTRE MAHARAJA AGRASEN COLLEGE VASUNDARA ENCLAVE NEAR CHILLA SPORTS COMPLEX DELHI-110096
203	NOIDA	39007	DUHAI (GHAZIABAD)	COORDINATOR IGNOU STUDY CENTRE MODERN INST.FOR TECH.& MANG. NH-58 DUHAI DELHI-MEERUT ROAD DISTT. GHAZIABAD UTTAR PRADESH-201206
204	NOIDA	39010	MEERUT	COORDINATOR IGNOU STUDY CENTRE NANAKCHAND ANGLO SANSKRIT COLLEGE (NASC) E K RAOD, DISTT MEERUT UTTAR PRADESH

REGION-WISE LIST OF STUDY CENTRES

SL. NO.	REGIONAL CENTRE	CODE OF STUDY CENTRE & CATEGORY	PLACE OF STUDY	ADDRESS OF THE IGNOU STUDY CENTRE
205	NOIDA	39014 D	MEERUT	COORDINATOR IGNOU SPL STUDY CENTRE (W) RAGHUNATH GIRLS (P.G.) COLLEGE WESTERN KUTCHERY ROAD, MEERUT UTTAR PRADESH-250001
206	PANAJI RC Code : 08	0801	COMBA	COORDINATOR IGNOU STUDY CENTRE SH. DAMODAR COLL. OF COM & ECO P.B. NO. 347, TANSOR, COMBA GOA-MARGAON GOA-403601
207	PANAJI	1303	DHARWAD	COORDINATOR IGNOU STUDY CENTRE J.S.S. COLLEGE VIDYAGIRI, DHARWAD KARNATAKA-580004
208	PANAJI	1312	KARWAR	COORDINATOR IGNOU STUDY CENTRE BGVS ARTS, COMMERCE & SCI COLL SADASHIVGAD, KARWAR KARNATAKA-581301
209	PANAJI	08015	BELGAUM	COORDINATOR IGNOU STUDY CENTRE KLS GOGTE INST.OF TECH. UDYAMBAG, BELGAUM KARNATAKA-590008
210	PANAJI	08017	HONAVAR	COORDINATOR IGNOU STUDY CENTRE SDM DEGREE COLLEGE OF ARTS & SCI. COMMERCE & BUSINESS ADMN. PRABHAT NAGAR, HONAVAR KARNATAKA-581334
211	PATNA RC Code : 05	0501	PATNA	COORDINATOR IGNOU STUDY CENTRE VANIYA MAHAVIDYALAYA PATNA COLLEGE CAMPUS PATNA, BIHAR-800005
212	PUNE RC Code : 16	1602	PUNE	COORDINATOR IGNOU STUDY CENTRE SYMBIOSIS INTERNATL. CUL & CEN SENAPATI BAPAT ROAD, PUNE MAHARASHTRA-411004

REGION-WISE LIST OF STUDY CENTRES

SL. NO.	REGIONAL CENTRE	CODE OF STUDY CENTRE & CATEGORY	PLACE OF STUDY	ADDRESS OF THE IGNOU STUDY CENTRE
213	PUNE	1605	SATARA	COORDINATOR IGNOU STUDY CENTRE D.G. DEGREE COLL. OF COMMERCE LECTURER IN ECONOMICS, SATARA MAHARASHTRA-415001
214	PUNE	1606	KOLHAPUR	COORDINATOR IGNOU STUDY CENTRE C.S. CENTRAL INST OF BUSINESS ECONOMICS & RESEARCH UNIVERSITY ROAD, KOLHAPUR MAHARASHTRA-416004
215	PUNE	1608	NASIK	COORDINATOR IGNOU STUDY CENTRE KTHM COLLEGE GANGAPUR ROAD SHIVAJI NAGAR, NASIK MAHARASHTRA-422002
216	PUNE	1610	AURANGABAD	COORDINATOR IGNOU STUDY CENTRE VIVEKANAND ARTS & SDS COM. COL SAMRAT NAGAR, AURANGABAD MAHARASHTRA-431001
217	PUNE	1611	JALGAON	COORDINATOR IGNOU STUDY CENTRE NORTH MAHARASHTRA UNIVERSITY BLOCK NO. 125, ADMN. BLDG. P.B. NO. 80, JALGAON MAHARASHTRA-425001
218	PUNE	16129	PUNE	COORDINATOR IGNOU STUDY CENTRE VIDYA PRATISHTHAN'S INST. OF INFORMATION TECHNOLOGY (VT) VIDHYANAGARI BHIGWAN ROAD BARAMATI PUNE MAHARASHTRA-413133
219	PUNE	16134	NIGDI PRADHIKARAN	COORDINATOR IGNOU STUDY CENTRE SB PATIL INSTT OF MANAGEMENT AKURDI, NIGDI PRADHIKARAN PUNE-411044
220	RAIPUR RC Code : 35	1503	DURG	COORDINATOR IGNOU STUDY CENTRE GOVT. ARTS & SCI. COLLEGE, DURG CHHATTISGARH-491002

REGION-WISE LIST OF STUDY CENTRES

SL. NO.	REGIONAL CENTRE	CODE OF STUDY CENTRE & CATEGORY	PLACE OF STUDY	ADDRESS OF THE IGNOU STUDY CENTRE
221	RAIPUR	1505	BILASPUR	COORDINATOR IGNOU STUDY CENTRE GOVT E RAGHAVENDRA RAO P G COLLEGE SEEPAT ROAD, BILASPUR CHHATTISGARH-495001
222	RAIPUR	1510	RAIPUR	COORDINATOR IGNOU STUDY CENTRE PT. RAVI SHANKAR SHUKLA UNIV. ARTS BLOCK EXTN. (RIGHT WING) RAIPUR CHHATTISGARH-492010
223	RAIPUR	1517 R	KORBA	COORDINATOR IGNOU RECOG. STUDY CENTRE N.T.P.C. TRAINING CENTRE EMPLOYEE DEVELOPMENT CENTRE JAMNIPALI PO, KORBA CHHATTISGARH-495450
224	RAIPUR	3504	DHAMTARI	COORDINATOR IGNOU STUDY CENTRE GOVT POST GRADUATE COLLEGE DHAMTARI CHHATTISGARH-493773
225	RAIPUR	3507	CHAMPA	COORDINATOR IGNOU STUDY CENTRE GOVERNMENT DEGREE COLLEGE CHAMPA CHHATTISGARH-495671
226	RAIPUR	3510	RAJNADGAON	COORDINATOR IGNOU STUDY CENTRE GOVT. DIGVIJAYA COLLEGE RAJNANDGAON CHATTISGARH-491441
227	RAIPUR	3514	KORBA	COORDINATOR IGNOU STUDY CENTRE GOVT. P.G. COLLEGE RAJGAMAR ROAD, KORBA CHHATTISGARH
228	RAJKOT RC Code : 42	0923	ADIPUR	COORDINATOR IGNOU STUDY CENTRE TOLANI COMMERCE COLLEGE P.B. N. 27, (KUTCH), ADIPUR GUJARAT-370205

REGION-WISE LIST OF STUDY CENTRES

SL. NO.	REGIONAL CENTRE	CODE OF STUDY CENTRE & CATEGORY	PLACE OF STUDY	ADDRESS OF THE IGNOU STUDY CENTRE
229	RAJKOT	42011	RAJKOT	COORDINATOR IGNOU STUDY CENTRE SHRI SUNSHINE EDUCATIONALTRUST GROUP OF INSTITUTIONS MOTIA MAVA BEHIND RANGOLI PARK KALAWAD ROAD RAJKOT GUJARAT-360005
230	RAJKOT	42012	RAJKOT	COORDINATOR IGNOU STUDY CENTRE SAURASHTRA UNIVERSITY DEPT OF ELECTRONICS RAJKOT-360005
231	RANCHI RC Code : 32	0502	JAMSHEDPUR	COORDINATOR IGNOU STUDY CENTRE JAMSHEDPUR COOPERATIVE COLLEGE JAMSHEDPUR JHARKHAND
232	RANCHI	0503	DHANBAD	COORDINATOR IGNOU STUDY CENTRE P.K. ROY MEMORIAL COLLEGE SERAIIDHELA, DHANBAD JHARKHAND-826001
233	RANCHI	0507	BOKARO	COORDINATOR IGNOU STUDY CENTRE EDN. & RESEARCH TRUST (NIPM) NEW ADMN. BUILDING III/B SCHOOL BOKARO STEEL CITY BOKARO, JHARKHAND-827006
234	RANCHI	0514 R	RANCHI	COORDINATOR IGNOU RECOG STUDY CENTRE INDIAN INSTT. OF COAL MGT. KANKE, RANCHI JHARKHAND-834006
235	RANCHI	0528	HAZARIBAGH	COORDINATOR IGNOU STUDY CENTRE ST. COLUMBA'S COLLEGE P.O. COLLEGE MORE HAZARIBAGH JHARKHAND-825301
236	RANCHI	32002 D	RANCHI	COORDINATOR IGNOU SPL STUDY CENTRE JHARKHAND EDUCATION CENTRE 202 C ROAD NO 1 VIDHAYALAYA MARG ASHOK NAGAR RANCHI, JHARKHAND-834002

REGION-WISE LIST OF STUDY CENTRES

SL. NO.	REGIONAL CENTRE	CODE OF STUDY CENTRE & CATEGORY	PLACE OF STUDY	ADDRESS OF THE IGNOU STUDY CENTRE
237	RANCHI	32024	JAMSHEDPUR	COORDINATOR IGNOU STUDY CENTRE KARIM CITY COLLEGE PO. SAKCHI, JAMSHEDPUR EAST SINGHBHUM JHARKHAND-831001
238	SHILLONG RC Code : 18	1801	SHILLONG	COORDINATOR IGNOU STUDY CENTRE NORTH EASTERN HILL UNIVERSITY BIJNI COMPLEX LAITUMKHRAH, SHILLONG MEGHALAYA-793003
239	SHIMLA RC Code : 11	1102	MANDI	COORDINATOR IGNOU STUDY CENTRE GOVERNMENT P.G. COLLEGE MANDI HIMACHAL PRADESH-175001
240	SHIMLA	1103	SOLAN	COORDINATOR IGNOU STUDY CENTRE GOVERNMENT DEGREE COLLEGE SOLAN HIMACHAL PRADESH-173212
241	SHIMLA	1104	HAMIRPUR	COORDINATOR IGNOU STUDY CENTRE GOVERNMENT DEGREE COLLEGE HAMIRPUR HIMACHAL PRADESH-177005
242	SHIMLA	1105	DHARAMSHALA	COORDINATOR IGNOU STUDY CENTRE GOVERNMENT DEGREE COLLEGE DEPT. OF CHEMISTRY DHARAMSHALA HIMACHAL PRADESH-177005
243	SHIMLA	1106	CHAMBA	COORDINATOR IGNOU STUDY CENTRE GOVERNMENT DEGREE COLLEGE CHAMBA HIMACHAL PRADESH-176310
244	SHIMLA	1108	NAHAN	COORDINATOR IGNOU STUDY CENTRE GOVERNMENT DEGREE COLLEGE NAHAN HIMACHAL PRADESH-173001

REGION-WISE LIST OF STUDY CENTRES

SL. NO.	REGIONAL CENTRE	CODE OF STUDY CENTRE & CATEGORY	PLACE OF STUDY	ADDRESS OF THE IGNOU STUDY CENTRE
245	SHIMLA	1109	UNA	COORDINATOR IGNOU STUDY CENTRE GOVERNMENT PG COLLEGE UNA HIMACHAL PRADESH-174303
246	SHIMLA	1113	BILASPUR	COORDINATOR IGNOU STUDY CENTRE GOVT. P.G. COLLEGE BILASPUR HIMACHAL PRADESH-174001
247	SHIMLA	1114 P	SHIMLA	PROG. I/C IGNOU PROG. STUDY CENTRE H.P. UNIVERSITY ACADEMIC STAFF COLLEGE, IV FLR LIBRARY BLD, SUMMER HILL SHIMLA HIMACHAL PRADESH-171005
248	SILIGURI RC Code : 45	2805	SILIGURI	COORDINATOR IGNOU STUDY CENTRE ADARSH MAHAVIDYALAYA SEVOKE ROAD, SILIGURI WEST BENGAL-734401
249	SILIGURI	45019	KALIMPONG	COORDINATOR IGNOU STUDY CENTRE KALIMPONG GOVT. COLLEGE P.O. KALIMPONG DISTT. DARJEELING WEST BENGAL-734301
250	SRINAGAR RC Code : 30	1202	SRINAGAR	COORDINATOR IGNOU STUDY CENTRE GOVT. AMAR SINGH COLLEGE GOGJI BAGH SRI NAGAR, J & K-190008
251	SRINAGAR	1209	SRINAGAR	COORDINATOR IGNOU STUDY CENTRE SHRI PRATAP SINGH COLLEGE MAULANA AZAD ROAD SRI NAGAR, J & K-190001
252	SRINAGAR	1236	BARAMULLA	COORDINATOR IGNOU STUDY CENTRE GOVT. DEGREE COLLEGE (BOYS) KHOJABAGH, TEHSIL BARAMULLA BARAMULLA, J & K-193101

REGION-WISE LIST OF STUDY CENTRES

SL. NO.	REGIONAL CENTRE	CODE OF STUDY CENTRE & CATEGORY	PLACE OF STUDY	ADDRESS OF THE IGNOU STUDY CENTRE
253	TRIVANDRUM RC Code : 40	1413	KOLLAM	COORDINATOR IGNOU STUDY CENTRE SREE NARAYANA COLLEGE KOLLAM KERALA-691001
254	TRIVANDRUM	1464	TRIVANDRUM	COORDINATOR IGNOU STUDY CENTRE C ACHYUTHA MENON STUDY CENTRE & LIBRARY, POOJAPPURA THIRUVANANTHAPURAM KERALA-695012
255	TRIVANDRUM	1473	TRIVANDRUM	COORDINATOR IGNOU STUDY CENTRE BIAR SAMSKRITHI BHAWAN GPO LANE THIRUVANANTHAPURAM KERALA-695001
256	TRIVANDRUM	2507	TUTICORIN	COORDINATOR IGNOU STUDY CENTRE V.O.C. COLLEGE PALAYAMKOTAI ROAD TUTICORIN TAMILNADU-628008
257	TRIVANDRUM	2511	NAGERCOIL	COORDINATOR IGNOU STUDY CENTRE S.T. HINDU COLLEGE, NAGERCOIL TAMILNADU-629002
258	TRIVANDRUM	2545	THIRUNELVELI	COORDINATOR IGNOU STUDY CENTRE SADAKATHULLAH APPA COLLEGE RAHMATH NAGAR THIRUNELVELI TAMILNADU-627011
259	VARANASI RC Code : 48	2703	ALLAHABAD	COORDINATOR IGNOU STUDY CENTRE ALLAHABAD DEGREE COLLEGE 15, KYADGANJ, ALLAHABAD UTTAR PRADESH-211003
260	VARANASI	2708	VARANASI	COORDINATOR IGNOU STUDY CENTRE UDAI PRATAP PG COLLEGE VARANASI UTTAR PRADESH-221002

REGION-WISE LIST OF STUDY CENTRES

SL. NO.	REGIONAL CENTRE	CODE OF STUDY CENTRE & CATEGORY	PLACE OF STUDY	ADDRESS OF THE IGNOU STUDY CENTRE
261	VARANASI	2709	GORAKHPUR	COORDINATOR IGNOU STUDY CENTRE GORAKHPUR UNIVERSITY DEPARTMENT OF PHYSICS GORAKHPUR UTTAR PRADESH-273009
262	VARANASI	2710	SULTANPUR	COORDINATOR IGNOU STUDY CENTRE KAMALA INSTT. OF PHY & SO SCI SULTANPUR UTTAR PRADESH-228118
263	VARANASI	2722 R	SHAKTINAGAR	COORDINATOR IGNOU RECOG STUDY CENTRE N.T.P.C., SHAKTINAGAR UTTAR PRADESH-231222
264	VARANASI	2723 R	AZAMGARH	COORDINATOR IGNOU RECOG STUDY CENTRE CHILDREN COLLEGE A I C C E D S, C/O CHILDREN COLLEGE AZAMGARH UTTAR PRADESH-276001
265	VARANASI	2745	JAUNPUR	COORDINATOR IGNOU STUDY CENTRE VBS PURVANCHAL UNIVERSITY SHAHGANJ ROAD, JAUNPUR UTTAR PRADESH-222002
266	VARANASI	27109	VARANASI	COORDINATOR IGNOU STUDY CENTRE DEPARTMENT OF EDUCATION BANARAS HINDU UNIVERSITY KAMACHHA, VARANASI UTTAR PRADESH-221005
267	VARANASI	48012	VARANASI	COORDINATOR IGNOU STUDY CENTRE MICROTEK COLLEGE OF MANAGEMENT & TECHNOLOGY C-27-279 A-2 MALDAHIYA VARANASI UTTAR PRADESH-
268	VARANASI	48028	CIVIL COURT ROAD	COORDINATOR IGNOU REGULAR STUDY CENTRE ST. ANDREW'S COLLEGE CIVIL COURT ROAD, GORAKHPUR UTTAR PRADESH-273001

REGION-WISE LIST OF STUDY CENTRES

SL. NO.	REGIONAL CENTRE	CODE OF STUDY CENTRE & CATEGORY	PLACE OF STUDY	ADDRESS OF THE IGNOU STUDY CENTRE
269	VATAKARA RC Code : 83	1403	CALICUT	COORDINATOR IGNOU STUDY CENTRE JDT ISLAM, MARI KUNNU P.O. CALICUT KERALA-673012
270	VIJAYAWADA RC Code : 33	0102	NELLORE	COORDINATOR IGNOU STUDY CENTRE V.R. COLLEGE, NELLORE ANDHRA PRADESH-524001
271	VIJAYAWADA	0103	VIJAYAWADA	COORDINATOR IGNOU STUDY CENTRE KBN COLLEGE KOTHAPETA, VIJAYAWADA ANDHRA PRADESH-520001
272	VIJAYAWADA	0104	GUNTUR	COORDINATOR IGNOU STUDY CENTRE TJPS COLLEGE RING ROAD, GUNTUR ANDHRA PRADESH-522006
273	VIJAYAWADA	0106	ANANTAPUR	COORDINATOR IGNOU STUDY CENTRE SHRI SAIBABA NAT. DEGREE COLL. ANANTAPUR ANDHRA PRADESH-515001
274	VIJAYAWADA	0148	KHAMMAM	COORDINATOR IGNOU STUDY CENTRE KAVITHA MEMORIAL DEG. COLLEGE N.S.T. ROAD, KHAMMAN ANDHRA PRADESH-507002
275	VIJAYAWADA	33022	KANDUKUR (PRAKASAM)	COORDINATOR IGNOU STUDY CENTRE TRR GOVT DEGREE COLLEGE KANDUKUR, PRAKASAM DIST. ANDHRA PRADESH
276	VIJAYAWADA	33023	KOTHAGUDEM	COORDINATOR IGNOU REGULAR STUDY CENTRE S.R. GOVT. ARTS & SC. COLLEGE LAKSHMI DEVIPPALLY KOTHAGUDEM KHAMMAM DIST. ANDHRA PRADESH

REGION-WISE LIST OF STUDY CENTRES

SL. NO.	REGIONAL CENTRE	CODE OF STUDY CENTRE & CATEGORY	PLACE OF STUDY	ADDRESS OF THE IGNOU STUDY CENTRE
277	VISAKHAPATNAM RC Code : 84	0109	VISAKHAPATNAM	COORDINATOR IGNOU STUDY CENTRE DR. L. BULLAYA COLLEGE VISAKHAPATNAM ANDHRA PRADESH-530013
278	VISAKHAPATNAM	0110	KAKINADA	COORDINATOR IGNOU STUDY CENTRE IDEAL COLLEGE OF ARTS & SCI. KAKINADA ANDHRA PRADESH-533004
279	VISAKHAPATNAM	33015	BHIMAVARAM	COORDINATOR IGNOU STUDY CENTRE PG COURSES & RESEARCH CENTRE DNR COLLEGE, BHIMAVARAM DIST WEST GODAVARI ANDHRA PRADESH-534202
280	VISAKHAPATNAM	33018	VIZIANAGARAM	COORDINATOR IGNOU STUDY CENTRE MAHARAJAH'S PG COLLEGE VIZIANAGARAM ANDHRA PRADESH
281	VISAKHAPATNAM	84002	RAJAHMUNDRY	COORDINATOR IGNOU STUDY CENTRE GOVERNMENT COLLEGE(AUTONOMOUS) RAJAHMUNDRY EAST GODAVARI DISTRICT ANDHRA PRADESH-533105

Additional Regional Centres with Code and Address

Sl. No.	Regional Centres, Code No and No. of Learner Supported Centres	Address of the Regional Centres, Telephone, Fax and E-mail	List of Jurisdiction
1.	Aizwal RC CODE: 19 NO. OF LSC: 41	Regional Director, IGNOU Regional Centre Lal Bulaia Building, M.G. Road, Aizwal - 796 001, khatla, (near central YMCA Off), Mizoram 0389-2311693 / 2311692 0389-2311789; rcaizwal@ignou.ac.in	State of Mizoram (District: Aizwal, Lunglei, Kolasib, Mamit, Serchhip, Saiha, Champhai, Lawngtlai)
2.	Deoghar RC CODE: 87 NO. OF LSC: 12	Regional Director IGNOU Regional Centre, A S College, Deoghar Deoghar, Jharkhand 814142 06432-34448; rcodeoghar@ignou.ac.in	State of Jharkhand covering (Districts Kodagu, Mandya, Mysore, Udipi), Deoghar, Godda, Sahibganj, pakur, Dumka, Jamtara & Giridih)
3.	Gangtok RC CODE: 24 NO. OF LSC: 14	Regional Director, IGNOU Regional Centre Gairigaon Tadong, PO Shumbuk House, Gantok - 737 102, Sikkim 0359-2270923, 0359-2212501 regangtok@ignou.ac.in	State of Sikkim (District: East Sikkim, West Sikkim, North Sikkim South Sikkim)
4.	PortBlair	Regional Director (i/c), IGNOU Regional Centre JNRM Campus, Port Blair - 744 104 Andaman & Nicobar Islands 03192-242888, 03192-230111 rcportblair@ignou.ac.in	Andaman & Nicobar Islands [U.T.] (District: North & Middle Andaman, South Andaman, Nicobar)
5.	Raghunathganj	Regional Director, IGNOU Regional Centre Bagan Bari, Near Dena Bank Fultala Raghunathganj Dt. Murshidabad West Bengal-742 225 03483-271555, 03483-271666 rcraghunathganj@ignou.ac.in	State of West Bengal (District: Murshidabad, Birbhum, Malda)
6.	Saharsa	Regional Director, IGNOU Regional Centre C/o MLC College, Saharsa, Saharsa Bihar 582201; 06478-219014, 06478-219015 06478-219018; rcsaharsa@ignou.ac.in	State of Bihar covering (Districts Khagariya, Saharsa, Supaul, Madhepura, Katihar, Arariya, Kishanganj & Purnia)

Please check IGNOU website for details of regional centre and study centres with codes to be used for filling application form.

**LIST OF PROGRAMME STUDY CENTRES FOR
POST BASIC B.Sc. NURSING,
PSC AND RC CODE
(Inspected and approved by INC)**

Sl.No.	PSC Code	Name & Address	RC Code	No. of Seats
1	0113	College Of Nursing, Nizam's Institute of Medical sciences, Hyderabad- 500 082	01	30
2	0183	Govt College Of Nursing, King George Hospital Campus, Maharani Peta, Visakhapatnam- 530002 Andhra Pradesh	84	30
3	0426	Regional College Of Nursing, P O, Indrapur, Guwahati-781032	04	30
4	0723	R A K College Of Nursing, , Lajpat Nagar, New Delhi 110024	07	30
5	0901	College Of Nursing, New Civil Hospital Campus, Asarwa, Ahmedabad- 380016	09	30
6	1263	Bibi Halima College Of Nursing & Medical Technology , All J & K Muslim Wakf Board, Zero Bridge, Srinagar -190010	30	20
7	1326	K L E S Institute Of Nursing Sciences, Nehru Nagar, , Belgaum-590010, Karnataka	08	30
8	1621	Institute Of Nursing Education, Sir J J Group Of Hosp Compound, Byculla, Mumbai-400 008 Maharashtra	49	30
9	1661	Temi Grant Institute Of Nursing Education, Ruby Hall,Clinical Grant Medical Foundation 13 , Tadiwala Road, Pune-411001	16	20
10	2137	College Of Nursing, , M K C G, Medical College Campus, Behrampur, Ganjam-760004	21	30
11	2209	Christian Medical College & Hospital, College Of Nursing, Ludhiana-141 008, Punjab	22	30
12	2316	Govt College Of Nursing, J L N Marg, , Jaipur-302 004	23	30
13	2740	College of Nursing, Kanpur-214879 UP	27	30
14	2876	Shova Rani Nursing College IF, Raja S.C. Mullick Road Jadavpur, Kolkata - 700032	28	30
15	2851P	College of Nursing, SSKM Hospital, Kolkatta	28	30
16	29006P	Ahilya Bai College of Nursing, Delhi – 110001	29	25
17	1917	RIPAN, College of Nursing, Mizoram, Aizawl	19	15
18	33009	St. Anne College of Nursing, Nizam's Vijaywada, Andhra Pradesh-520001	33	30
19	1346P	Narayana Hrudayala College of Nursing, Bangalore	13	30

The number of PSC will be added as and when more PSCs are inspected and approved by INC.

Post Basic B. Sc. Nursing
Number of Counselling and Practical Hours & Days
1st Year Courses

		1st year				Sept. – Oct.					
		May – June		Spell I		Spell II					
Hours		Theory	Practical	Theory	Practical	Theory	Practical				
BNS 101 BNS L 101	24	60	8 sessions – 16 hrs	2 days	40 hrs	5 days	4 sessions – 8 hrs	8	1 day	20 hrs	2½ days
BNS 102 BNSL 102	14	118	4 sessions – 8 hrs Micro 1 B Phy. 1 B N&D 1 B	1 day	56 hrs	7 days 3½ days (micro) 3½ days (Biophy)	3 sessions – hrs Micro Block 2 Biochemistry 1	6	1 day	56 hrs BC N & D	7 days
BNS 103 BNSL 103	12	120	4 sessions – 8 hrs	1 day	64 hrs	8 days	2 sessions – 4 hrs	-	1½ day	56 hrs	7 days
BNS 104	12	-	6 sessions – 12 hrs	1½ day	-	-	-	-	-	-	-
BNS 105 BNSL 105	24	30	6 sessions – 12 hrs Gen Psycho Sociology	2 days	30 hrs	3 days	6 sessions – 12 hrs Edu. Psychology Sociology	12	2 days	-	16½ days

Theory = 7½ + 4½ = 12 days

Practical = 23 days + 16½ = 39 ½ days

Nursing Teacher's Days

Theory = 4½ days

Practical = 22 days

BC – Biochemistry
N & D – Nutrition and Dietetics

Regional Centre/Programme Study Centre will inform schedule of Theory and Practical Classes

2 nd Year										
May – June					Sept. – Oct.					
Spell I					Spell II					
Hours		Theory		Practical		Theory		Practical		
Courses	Theory (hours)	Practical (hours)	8 sessions = 16 hrs	2 days	80 hrs	10 days	4 sessions = 8 hrs	1 day	50 hrs	6 days
BNS 106 BNSL 106	24	150	8 sessions = 16 hrs	2 days	80 hrs	10 days	4 sessions = 8 hrs	1 day	50 hrs	6 days
BNS 107 BNSL 107	12	120	4 sessions = 8 hrs	1 day	80 hrs	10 days	2 sessions = 4 hrs	1½ day	40 hrs	5 days
BNS 108 BNSL 108	24	120	8 sessions = 16 hrs	2 days	80 hrs	10 days	4 sessions = 8 hrs	1 day	40 hrs	5 days
				5 days		30 days		2½ days		16 days

Theory = 7½ days

Practical = 46 days

Regional Centre/Programme Study Centre will inform schedule of Theory and Practical Classes

3 rd Year										
May – June					Sept. – Oct.					
Spell I					Spell II					
Courses	Hours		Theory		Practical		Theory		Practical	
	Theory (hours)	Practical (hours)	8 sessions – 16 hrs	2 days	80 hrs	10 days	4 sessions – 8 hrs	1 day	40 hrs	5 days
BNS 109	24	120	8 sessions – 16 hrs	2 days	80 hrs	10 days	4 sessions – 8 hrs	1 day	40 hrs	5 days
BNS 110	24	90	8 sessions – 16 hrs	2 days	64 hrs	8 days	4 sessions – 8 hrs	1 day	26 hrs	3 days
BNS 111	24	120	8 sessions – 16 hrs	2 days	80 hrs	10 days	4 sessions – 8 hrs	1 day	40 hrs	5 days
BNSL 112		60 hrs		6 days	40 hrs	5 days			20 hrs	2½ days
						33 days		3 days		15½ days

Nursing Teachers

Theory 6 + 3 = 9 days

Practical 15 + 11 + 15 = 41 days

Computer Practical - 7½ days

Regional Centre/Programme Study Centre will inform schedule of Theory and Practical Classes

Place tick mark (✓) against the most appropriate answer given under each statement. You will be given OMR Sheet to write the responses/answers to questions asked separately.

- 1) Sociology can be defined as:
 - I. Systematic Study of human society
 - II. Study of Psychology of human being
 - III. Study of human events correlated in time
 - IV. Study of man and his culture developed in past
- 2) Pregnant women feels tingling, numbness and pain in the thumb and finger during:
 - I. Neuritis
 - II. Carpal tunnel syndrome
 - III. Korsakoff's syndrome
 - IV. Down's syndrome
- 3) The most effective position for a women in labour with cord prolapsed is:
 - I. Sims
 - II. Lithotomy
 - III. Knee chest
 - IV. Fowlers'
- 4) The treatment of choice for rheumatoid arthritis is;
 - I. Penicillin
 - II. Erythromycin
 - III. Indomethicine
 - IV. Paraffin dip
- 5) Non bilious projectile vomiting is characteristic feature of :
 - I. Hirschprung's disease
 - II. Congenital hypertrophic Pyloric stenosis.
 - III. Intussusception
 - IV. Anorectal malformation

- 6) Intense elation accompanied by an attitude of grandeur is referred as:
- I. Euphoria
 - II. Elation
 - III. Exhalation
 - IV. Ecstasy
- 7) All of the following are positive signs of pregnancy **except**:
- I. Fetal heart sound are heard
 - II. Fetal parts are palpable
 - III. Fetal movements are palpable
 - IV. Breast changes are observed
- 8) Functional nursing refer to;
- I. team centered nursing
 - II. completion of routine tasks
 - III. concerned with specific nursing routines
 - IV. patient centered care
- 9) BCG Vaccine protect against:
- I. Beri-Beri
 - II. Rubella
 - III. Tuberculosis
 - IV. Whooping cough
- 10) Purposes of research are all **except**:
- I. Evaluation
 - II. Description
 - III. Exploration
 - IV. Prediction

How to fill up the information on the OMR Response Sheet (Examination Answer Sheet)

1. Write your complete enrolment no. in 9 digits. This should correspond to the enrolment number indicated by you on the OMR Response Sheet. Also write your correct name, address with pin code in the space provided. Put your signatures on the OMR Response Sheet with date. Ensure that the Invigilator in your examination hall also puts his signatures with date on the OMR Response Sheet at the space provided.
2. On the OMR Response Sheet student's particulars are to be filled in by pen. However use HB pencil for writing the Enrolment No. and Examination Centre Code as well as for blackening the circle bearing the correct answer number against the serial number of the question.
3. Do not make any stray remarks on this sheet.
4. Write correct information in numerical digit in Enrolment No. and Examination Centre Code Columns. The corresponding circle should be dark enough and should be filled in completely.
5. Each question is followed by four probable answers which are numbered 1, 2, 3 and 4. You should select and show only one answer to each question considered by you as the most appropriate or the correct answer. Select the most appropriate answer. Then by using HB pencil, blacken the circle bearing the correct answer number against the serial number of the question. If you find that answer to any question is none of the four alternatives given under the question, you should darken the circle with '0'.
6. If you wish to change your answer, ERASE completely the already darkened circle by using a good quality eraser and then blacken the circle bearing your revised answer number. If incorrect answer is not erased completely, smudges will be left on the erased circle and the question will be read as having two answers and will be ignored for giving any credit.
7. No credit will be given if more than one answer is given for one question. Therefore, you should select the most appropriate answer.
8. You should not spend too much time on any one question. If you find any particular question difficult, leave it and go to the next. If you have time left after answering all the questions, you may go back to the unanswered ones. There is no negative marking for wrong answers.

इन्दिरा गांधी राष्ट्रीय मुक्त विश्वविद्यालय
ओ.एम.आर. परीक्षा उत्तर पृष्ठ



Indira Gandhi National Open University
OMR RESPONSE SHEET

B	SHEET NUMBER
<p>निम्नलिखित विवरण केवल स्याही से भरें</p> <p>Course Particulars / पाठ्यक्रम विवरण Programme / कार्यक्रम Course Name / पाठ्यक्रम नाम</p> <p>Student's Particulars / विद्यार्थी विवरण Enrolment No. / अनुक्रमांक संख्या Name / नाम Address / पता City / शहर Pin Code / पिन कोड</p>	<p>Fill up the following particulars with ink only</p> <p>परीक्षा पत्र भरने से पहले कृपया निम्नलिखित निर्देशों को अवश्य पढ़ लें। प्रश्नोत्तर चिन्ह इस प्रकार बनायें <input type="checkbox"/> न कि <input type="checkbox"/> [x] [✓] [∨] <input type="checkbox"/> [•]</p> <p>Please read relevant instructions given below carefully before completing this form.</p> <p>Make like <input type="checkbox"/> Not like <input type="checkbox"/> [x] [✓] [∨] <input type="checkbox"/> [•]</p> <p>Candidate's Signature / विद्यार्थी के हस्ताक्षर</p> <p>Signature of Invigilator / अनुवीक्षक के हस्ताक्षर</p> <p>Date / दिनांक</p>

चिन्हित करने के लिए निर्देश

- उत्तर पृष्ठ को भरते समय केवल एच.बी. पेंसिल का प्रयोग करें।
- उत्तर पृष्ठ को मोड़ना/फाड़ना नहीं चाहिए।
- केवल निर्धारित कालम में ही उत्तर चिन्हित करें। यदि कोई गलत कालम चिन्हित हो गया हो तो रबड़ से अच्छी तरह मिटाकर सही कालम को भरें।
- पाठ्यक्रम का सही कोड प्रयोग करें। (प्रवेश परीक्षा परीक्षार्थियों के लिए पाठ्यक्रम कोड भरने की आवश्यकता नहीं है)।
- पाठ्यक्रम कोड इस प्रकार है।
- प्रवेश परीक्षार्थियों के लिए कार्यक्रम कोड इस प्रकार है।

INSTRUCTIONS FOR MARKING

- Use only H.B. Pencil for marking responses.
- Do not mutilate/tear this response sheet.
- Mark your answer in proper column. Erase clearly and completely to change any wrong marking, if any.
- Use correct course Code (Entrance Test Candidates need not fill up Course Code).
- Course Codes are given below.
- Programme Codes for Entrance Test Candidates are given below.

Course Code	PMT	PSS	PCO	CIC1	CIC2	CIC3	CIC4	CIC5
Computer Code	1111	1112	1113	2221	2222	2223	2224	2225

Programme Code	OPENMAT	B.ED.
Computer Code	555	666

- प्रत्येक प्रश्न के चार विकल्प दिये जाते हैं और उनमें से एक उत्तर विकल्प सही है जिसे आप उपयुक्त कालम में चिन्हित करें और काले किये गये घांटी की संख्या को ऊपर बने कालम में लिखें। यदि आप समझते हैं कि दिए गये प्रश्न में कोई भी विकल्प सही नहीं है तो उसका उत्तर "0" कालम में चिन्हित करें।
- अपना अनुक्रमांक, कार्यक्रम कोड (केवल प्रवेश परीक्षार्थियों के लिये), परीक्षा केन्द्र कोड, पाठ्यक्रम कोड, माह एवं वर्ष चिन्हित करने के लिए निम्नलिखित उदाहरण का अनुकरण करें।

- Four choices are given for a question, out of which one option is correct. Mark the correct answer in the relevant column and also write your answer choice in numeral in the rectangle above. If you find that none of the options given in a question is correct mark in column "0".
- Please follow the examples given below to mark your Enrolment Number, Programme Code (For Entrance Test Candidates only), Exam Centre Code, Course Code, Month and Year.

Enrolment Numbr अनुक्रमांक								
1	4	5	7	8	6	1	5	9
[0]	[0]	[0]	[0]	[0]	[0]	[0]	[0]	[0]
<input type="checkbox"/>	[1]	[1]	[1]	[1]	[1]	<input type="checkbox"/>	[1]	[1]
[2]	[2]	[2]	[2]	[2]	[2]	[2]	[2]	[2]
[3]	[3]	[3]	[3]	[3]	[3]	[3]	[3]	[3]
[4]	<input type="checkbox"/>	[4]	[4]	[4]	[4]	[4]	[4]	[4]
[5]	[5]	<input type="checkbox"/>	[5]	[5]	[5]	[5]	<input type="checkbox"/>	[5]
[6]	[6]	[6]	[6]	[6]	<input type="checkbox"/>	[6]	[6]	[6]
[7]	[7]	[7]	<input type="checkbox"/>	[7]	[7]	[7]	[7]	[7]
[8]	[8]	[8]	[8]	<input type="checkbox"/>	[8]	[8]	[8]	[8]
[9]	[9]	[9]	[9]	[9]	[9]	[9]	<input type="checkbox"/>	[9]

Course Code पाठ्यक्रम कोड			
1	1	1	2
[0]	[0]	[0]	[0]
<input type="checkbox"/>	[1]	<input type="checkbox"/>	[1]
[2]	[2]	[2]	<input type="checkbox"/>
[3]	[3]	[3]	[3]
[4]	[4]	[4]	[4]
[5]	[5]	[5]	[5]
[6]	[6]	[6]	[6]
[7]	[7]	[7]	[7]
[8]	[8]	[8]	[8]
[9]	[9]	[9]	[9]

Examination Centre Code परीक्षा केन्द्र कोड			
1	2	4	6
[0]	[0]	[0]	[0]
<input type="checkbox"/>	[1]	[1]	[1]
[2]	<input type="checkbox"/>	[2]	[2]
[3]	[3]	[3]	[3]
[4]	[4]	<input type="checkbox"/>	[4]
[5]	[5]	[5]	[5]
[6]	[6]	[6]	<input type="checkbox"/>
[7]	[7]	[7]	[7]
[8]	[8]	[8]	[8]
[9]	[9]	[9]	[9]

Programme Code कार्यक्रम कोड		
5	5	5
[0]	[0]	[0]
[1]	[1]	[1]
[2]	[2]	[2]
[3]	[3]	[3]
[4]	[4]	[4]
<input type="checkbox"/>	<input type="checkbox"/>	<input type="checkbox"/>
[6]	[6]	[6]
[7]	[7]	[7]
[8]	[8]	[8]
[9]	[9]	[9]

Month माह	
0	3
<input type="checkbox"/>	[0]
[1]	[1]
[2]	[2]
[3]	<input type="checkbox"/>
[4]	[4]
[5]	[5]
[6]	[6]
[7]	[7]
[8]	[8]
[9]	[9]

Year वर्ष			
2	0	0	0
[0]	<input type="checkbox"/>	<input type="checkbox"/>	<input type="checkbox"/>
[1]	[1]	[1]	[1]
[2]	[2]	[2]	[2]
[3]	[3]	[3]	[3]
[4]	[4]	[4]	[4]
[5]	[5]	[5]	[5]
[6]	[6]	[6]	[6]
[7]	[7]	[7]	[7]
[8]	[8]	[8]	[8]
[9]	[9]	[9]	[9]

कृपया जानिये कि उपर्युक्त अंक और कोड केवल उदाहरण के लिए हैं। आप अपना विवरण ठीक प्रकार लिखिये।
PLEASE NOTE THAT THE NUMBERS AND CODES GIVEN IN THE RESPECTIVE FIELDS ARE ONLY EXAMPLES.

MARK YOUR ANSWERS WITH H.B. PENCIL ONLY

A

(For Entrance Test Candidates Only)

Enrolment Numbr अनुक्रमांक									Course Code पाठ्यक्रम कोड				Examination Centre Code परीक्षा केन्द्र कोड				Programme Code पाठ्यक्रम कोड			Month माह		Year वर्ष			
1	4	5	7	8	6	1	5	9	1	1	1	2	1	2	4	6	5	5	5	0	3	2	0	0	0
[0]	[0]	[0]	[0]	[0]	[0]	[0]	[0]	[0]	[0]	[0]	[0]	[0]	[0]	[0]	[0]	[0]	[0]	[0]	[0]	[0]	[0]	[0]	[0]	[0]	[0]
[1]	[1]	[1]	[1]	[1]	[1]	[1]	[1]	[1]	[1]	[1]	[1]	[1]	[1]	[1]	[1]	[1]	[1]	[1]	[1]	[1]	[1]	[1]	[1]	[1]	[1]
[2]	[2]	[2]	[2]	[2]	[2]	[2]	[2]	[2]	[2]	[2]	[2]	[2]	[2]	[2]	[2]	[2]	[2]	[2]	[2]	[2]	[2]	[2]	[2]	[2]	[2]
[3]	[3]	[3]	[3]	[3]	[3]	[3]	[3]	[3]	[3]	[3]	[3]	[3]	[3]	[3]	[3]	[3]	[3]	[3]	[3]	[3]	[3]	[3]	[3]	[3]	[3]
[4]	[4]	[4]	[4]	[4]	[4]	[4]	[4]	[4]	[4]	[4]	[4]	[4]	[4]	[4]	[4]	[4]	[4]	[4]	[4]	[4]	[4]	[4]	[4]	[4]	[4]
[5]	[5]	[5]	[5]	[5]	[5]	[5]	[5]	[5]	[5]	[5]	[5]	[5]	[5]	[5]	[5]	[5]	[5]	[5]	[5]	[5]	[5]	[5]	[5]	[5]	[5]
[6]	[6]	[6]	[6]	[6]	[6]	[6]	[6]	[6]	[6]	[6]	[6]	[6]	[6]	[6]	[6]	[6]	[6]	[6]	[6]	[6]	[6]	[6]	[6]	[6]	[6]
[7]	[7]	[7]	[7]	[7]	[7]	[7]	[7]	[7]	[7]	[7]	[7]	[7]	[7]	[7]	[7]	[7]	[7]	[7]	[7]	[7]	[7]	[7]	[7]	[7]	[7]
[8]	[8]	[8]	[8]	[8]	[8]	[8]	[8]	[8]	[8]	[8]	[8]	[8]	[8]	[8]	[8]	[8]	[8]	[8]	[8]	[8]	[8]	[8]	[8]	[8]	[8]
[9]	[9]	[9]	[9]	[9]	[9]	[9]	[9]	[9]	[9]	[9]	[9]	[9]	[9]	[9]	[9]	[9]	[9]	[9]	[9]	[9]	[9]	[9]	[9]	[9]	[9]

1	2	3	4	5	6	7	8	9	10	11	12	13	14	15	16	17	18	19	20	21	22	23	24	25	26	27	28	29	30	31	32	33	34	35
[0]	[0]	[0]	[0]	[0]	[0]	[0]	[0]	[0]	[0]	[0]	[0]	[0]	[0]	[0]	[0]	[0]	[0]	[0]	[0]	[0]	[0]	[0]	[0]	[0]	[0]	[0]	[0]	[0]	[0]	[0]	[0]	[0]	[0]	[0]
[1]	[1]	[1]	[1]	[1]	[1]	[1]	[1]	[1]	[1]	[1]	[1]	[1]	[1]	[1]	[1]	[1]	[1]	[1]	[1]	[1]	[1]	[1]	[1]	[1]	[1]	[1]	[1]	[1]	[1]	[1]	[1]	[1]	[1]	[1]
[2]	[2]	[2]	[2]	[2]	[2]	[2]	[2]	[2]	[2]	[2]	[2]	[2]	[2]	[2]	[2]	[2]	[2]	[2]	[2]	[2]	[2]	[2]	[2]	[2]	[2]	[2]	[2]	[2]	[2]	[2]	[2]	[2]	[2]	[2]
[3]	[3]	[3]	[3]	[3]	[3]	[3]	[3]	[3]	[3]	[3]	[3]	[3]	[3]	[3]	[3]	[3]	[3]	[3]	[3]	[3]	[3]	[3]	[3]	[3]	[3]	[3]	[3]	[3]	[3]	[3]	[3]	[3]	[3]	[3]
[4]	[4]	[4]	[4]	[4]	[4]	[4]	[4]	[4]	[4]	[4]	[4]	[4]	[4]	[4]	[4]	[4]	[4]	[4]	[4]	[4]	[4]	[4]	[4]	[4]	[4]	[4]	[4]	[4]	[4]	[4]	[4]	[4]	[4]	[4]
36	37	38	39	40	41	42	43	44	45	46	47	48	49	50	51	52	53	54	55	56	57	58	59	60	61	62	63	64	65	66	67	68	69	70
[0]	[0]	[0]	[0]	[0]	[0]	[0]	[0]	[0]	[0]	[0]	[0]	[0]	[0]	[0]	[0]	[0]	[0]	[0]	[0]	[0]	[0]	[0]	[0]	[0]	[0]	[0]	[0]	[0]	[0]	[0]	[0]	[0]	[0]	
[1]	[1]	[1]	[1]	[1]	[1]	[1]	[1]	[1]	[1]	[1]	[1]	[1]	[1]	[1]	[1]	[1]	[1]	[1]	[1]	[1]	[1]	[1]	[1]	[1]	[1]	[1]	[1]	[1]	[1]	[1]	[1]	[1]	[1]	
[2]	[2]	[2]	[2]	[2]	[2]	[2]	[2]	[2]	[2]	[2]	[2]	[2]	[2]	[2]	[2]	[2]	[2]	[2]	[2]	[2]	[2]	[2]	[2]	[2]	[2]	[2]	[2]	[2]	[2]	[2]	[2]	[2]	[2]	
[3]	[3]	[3]	[3]	[3]	[3]	[3]	[3]	[3]	[3]	[3]	[3]	[3]	[3]	[3]	[3]	[3]	[3]	[3]	[3]	[3]	[3]	[3]	[3]	[3]	[3]	[3]	[3]	[3]	[3]	[3]	[3]	[3]	[3]	
[4]	[4]	[4]	[4]	[4]	[4]	[4]	[4]	[4]	[4]	[4]	[4]	[4]	[4]	[4]	[4]	[4]	[4]	[4]	[4]	[4]	[4]	[4]	[4]	[4]	[4]	[4]	[4]	[4]	[4]	[4]	[4]	[4]	[4]	
71	72	73	74	75	76	77	78	79	80	81	82	83	84	85	86	87	88	89	90	91	92	93	94	95	96	97	98	99	100	101	102	103	104	105
[0]	[0]	[0]	[0]	[0]	[0]	[0]	[0]	[0]	[0]	[0]	[0]	[0]	[0]	[0]	[0]	[0]	[0]	[0]	[0]	[0]	[0]	[0]	[0]	[0]	[0]	[0]	[0]	[0]	[0]	[0]	[0]	[0]	[0]	
[1]	[1]	[1]	[1]	[1]	[1]	[1]	[1]	[1]	[1]	[1]	[1]	[1]	[1]	[1]	[1]	[1]	[1]	[1]	[1]	[1]	[1]	[1]	[1]	[1]	[1]	[1]	[1]	[1]	[1]	[1]	[1]	[1]	[1]	
[2]	[2]	[2]	[2]	[2]	[2]	[2]	[2]	[2]	[2]	[2]	[2]	[2]	[2]	[2]	[2]	[2]	[2]	[2]	[2]	[2]	[2]	[2]	[2]	[2]	[2]	[2]	[2]	[2]	[2]	[2]	[2]	[2]	[2]	
[3]	[3]	[3]	[3]	[3]	[3]	[3]	[3]	[3]	[3]	[3]	[3]	[3]	[3]	[3]	[3]	[3]	[3]	[3]	[3]	[3]	[3]	[3]	[3]	[3]	[3]	[3]	[3]	[3]	[3]	[3]	[3]	[3]	[3]	
[4]	[4]	[4]	[4]	[4]	[4]	[4]	[4]	[4]	[4]	[4]	[4]	[4]	[4]	[4]	[4]	[4]	[4]	[4]	[4]	[4]	[4]	[4]	[4]	[4]	[4]	[4]	[4]	[4]	[4]	[4]	[4]	[4]	[4]	

LIST OF STATE CODES

State Code	
Code	Description
01.	Andhra Pradesh
02.	Anadaman & Nicobar Islands (UT)
03.	Arunachal Pradesh
04.	Assam
05.	Bihar
06.	Chandigarh (UT)
07.	Delhi
08.	Goa
09.	Gujarat
10.	Haryana
11.	Himachal Pradesh
12.	Jammu & Kashmir
13.	Karnataka
14.	Kerala
15.	Madhya Pradesh
16.	Maharashtra
17.	Manipur
18.	Meghalaya
19.	Mizoram
20.	Nagaland
21.	Orissa
22.	Punjab
23.	Rajasthan
24.	Sikkim
25.	Tamil Nadu
26.	Tripura
27.	Uttar Pradesh
28.	West Bengal
29.	Dadra & Nagar Haveli, Daman & Diu (UT)
30.	Lakshadweep (UT)
31.	Pandicherry (UT)
32.	C/o 56 APO
33.	C/o 99 APO
34.	Learners Abroad
35.	Chattisgarh
36.	Jharkhand
37.	Uttarakhand
Educational Qualification Code	
Code	Description
000	Below Matriculation, SSC/No Formal Education
001	Matriculation/SSC
002	10+2 or equivalent
003	Diploma in Engineering
004	Graduation in Engineering
005	Graduation or Equivalent
006	Post Graduation or Equivalent
007	Doctoral or Equivalent
008	BPP from IGNOU
009	Bachelor of Library Information Science
010	Master of Library & Information Science
011	PG Diploma in Dietetics and Public Health Nutrition or Equivalent

LIST OF BOARD CODES (FOR 10+2)

Sl. No.	Code of Board	Board (Abbr)	Year from which 10+2 in effect	Name of the Board
1.	0101	ABIE	ALWAYS	Board of Intermediate Education, Andhra Pradesh
2.	0401	AHSL	1986	Assam Higher Secondary Education Council
3.	0501	BIEC	ALWAYS	Bihar Intermediate Education Council
4.	0701	CBSE	1979	Central Board of Secondary Education, New Delhi
5.	0702	ICSE	1979	Council for the Indian School (Certificate Exam), New Delhi
6.	0703	NOS/NIOS	1991	National Institute of Open Schooling, Delhi (Passed with five subjects)
7.	0801	GBSE	1978	Goa, Daman & Diu Board of Sec. & Higher Sec. Ed.
8.	0901	GSEB	1978	Gujarat Secondary Education Board
9.	1001	HBSE	1987	Haryana Board of School Education
10.	1101	HPBE	1988	Himachal Pradesh Board of School Education
11.	1201	JKSS	1980	J&K State Board of School Education (Summer)
12.	1202	JKSW	1980	J&K State Board of School Education (Winter)
13.	1301	KBPE	1971	Board of Pre-University Education, Karnataka
14.	1401	KU	1966	University of Kerala
15.	1501	BSMP	1988-89	Board of Secondary Education, MP
16.	1601	MSBE	1978	Maharashtra State Board of Secondary Education & Higher Secondary Board
17.	1701	MBSE	1980	Board of Secondary Education, Manipur
18.	1901	MZSE	1980	Mizoram Board of Secondary Education
19.	2001	NBSE	1980	Nagaland Board of Secondary Education
20.	2101	CHSE	1980	Council of Higher Secondary Education, Orissa
21.	2201	PSEB	1988	Punjab School Education Board
22.	2301	RBSE	1986	Rajasthan Board of Secondary Education
23.	2501	TNSB	1978	Board of Secondary & Higher Secondary Exam., Tamil Nadu
24.	2601	TBSE	-	Tripura Board of Secondary Education
25.	2701	BHSI	ALWAYS	Board of High School & Intermediate Edu., U.P.
26.	2802	WBSE	1978	West Bengal Council of Higher Secondary Education
27.	3601	JAC	2006	Jharkhand Academic Council, Ranchi
28.	8888	DDDD	-	A recognised three/two year Diploma/Certificate after 10th Class
29.	9999	XXXX	-	Not listed in this list

Sl. No.	Code of Board	Board (Abbr)	Year from which 10+2 vocational stream in effect	Name of the Board
1.	1901	MZSE	2001	Mizoram Board of Secondary Education



INDIRAGANDHINATIONALOPEN UNIVERSITY
MAIDAN GARHI, NEW DELHI-110068

APPLICATION FORM FOR OBTAINING PHOTOCOPY OF THE ANSWER SCRIPT

(Rules & Regulations are mentioned on the reverse side of this form. Please go through them carefully before filling up the form).

1. Name:

2. Programme: Enrolment No:

3. Address:

.....

..... Pin Code

4. Contact No

5. Detail of the course(s), for which photocopy of the answer script(s) is/are required:

(a) Term-end examination: June/December

(b) Exam Centre Code:

(c) Exam Centre Address:

.....

.....

(d) Course(s):

6. Fee details:-

(The fee for this purpose is Rs. 100/- per course, which is to be paid through demand draft drawn in favour of IGNOU & payable at the City of Evaluation Centre)

No. of Course(s):..... × ₹ 100/- = Total Amount:

Demand Draft No.: Date

Issuing Bank:

7. Self attested photocopy of the Identity Card : Attached/Not attached
 issued by the University

UNDERTAKING

I hereby undertake that the answer script(s), for which photocopy(ies), applied for, belongs to me. For this purpose, I am enclosing self attested photocopy of my Identity Card issued by the University. In case, my statement is found false, the University may take action against me as deemed fit.

Date:

Signature:

Place:

Name:

P.T.O.

RULES & REGULATIONS FOR OBTAINING PHOTOCOPY OF THE ANSWER SCRIPT

1. The fee for photocopy of answer script shall be Rs. 100/- (Rupees One Hundred only) per course. Fee should be paid in the form of Demand Draft drawn in favour of IGNOU and payable at the city of the evaluation centre.
2. Application form without self attested photocopy of the Identity Card of the student will not be entertained.
3. Student's application form for photocopy(ies) of the answer script(s) shall reach the Concerned Evaluation Centre (as mentioned below in the last Para) along with the prescribed fee within 45 days from the date of declaration of results i.e., the date on which the result are placed on the IGNOU website.
4. The students, who find that any portion of the answer was not evaluated or any totaling error is noticed, may point out the same and submit their representation alongwith a copy of the answer script supplied to them within 15 days. No other query regarding evaluation of answer script shall be entertained.
5. The students, who intend to apply for photocopy(ies) of the answer script(s) may simultaneously apply for re-evaluation, if they so desire. The last date for submission of application for re-evaluation will not be extended to facilitate them to point out discrepancy in the evaluation.
6. Application form duly filled-in may be sent to the following address except CPE* & DPE* programmes:

Sl. No.	Address of Evaluation Centre	Jurisdiction of Evaluation Centre
1.	Dy. Registrar, Evaluation Centre Block-5, IGNOU, Maidan Garhi New Delhi - 110068	All Examination Centres within Delhi-1, Delhi-2, Delhi-3, All Schools and Division at Hqs.
2.	Dy. Registrar, Evaluation Centre Periyar Thidal No. 50 EVK Sampath Road Vepery, Chennai-600 007	All Examination Centres in Chennai, Hyderabad Port Blair, Vijayawada, Trivandrum, Cochin, Bangalore, Madurai, Panaji, Nagpur and Sub-RC Vatakara
3.	Dy. Registrar, Evaluation Centre IGNOU Regional Centre 2nd Floor, Biscomaun Tower W. Gandhi Maidan Patna-800 001	All Examination Centres in Patna, Raipur, Bhuvneshwar, Koraput, Siliguri and Raghunathganj
4.	Dy. Registrar, Evaluation Centre IGNOU Regional Centre B-1/33, Sector-H, Aliganj Lucknow - 226 024	All Examination Centres in Lucknow, Varanasi, Aligarh, Dehradun, Noida, Karnal, Chandigarh, Khanna, Shimla, Jammu and Srinagar
5.	Dy. Registrar, Evaluation Centre IGNOU Regional Centre	All Examination Centres in Lucknow, Varanasi, Aligarh, Dehradun, Noida, Karnal, Chandigarh, Khanna, Shimla, Jammu and Srinagar
6.	Dy. Registrar, Evaluation Centre IGNOU Regional Centre 1st Floor, MSFC Building 270, Senapati Bapat Road Pune-411 016	All Examination Centres in Guwahati, Itanagar, Imphal, Shillong, Agartala, Gangtok, Kohima and Aizawl
7.	Dy. Registrar IGNOU Regional Evaluation Centre "Mangolik", H/H-19/1, Bagupara PO-Aswinin Nagar, VIP Road Baguiati, Kolkata - 700 159	All Examination Centres in Kolkata, Darbhanga and Ranchi

* For the photocopy(ies) of the answer script(s) of CPE & DPE programmes, the application form may be sent to the Regional Centre concerned.



**INDIRA GANDHI NATIONAL OPEN UNIVERSITY
STUDENT EVALUATION DIVISION**

**APPLICATION FORM FOR EARLY DECLARATION OF RESULT OF TERM-END
EXAMINATION**

(Rules & regulations are mentioned on the reverse side of this form. Please go through them carefully before filling up the form).

1. Name :
2. Programme: Enrolment No:
3. Address:
-
- Pin

4. Reason for early declaration of result:
-
- (enclose a copy of the documentary evidence specifying the reason for early declaration)

5. Courses(s) detail for early evaluation:-

S. No.	Course Code	Date of Examination
1.	_____	_____
2.	_____	_____
3.	_____	_____
4.	_____	_____

6. Exam. Centre details, from where you have to appear/appeared at Term-end Examination:-

Exam. Centre Code: Address of Exam. Centre: _____

7. **Fee detail:**

(The fee for early declaration of result is Rs. 700/- per course, which is to be paid through demand draft drawn in favour of 'IGNOU' & payable at the City of Evaluation Centre)

No. of Course(s): × ₹ 700/- = Total Amount:

Demand Draft No.: Date:

Issuing Bank:

Date:.....

(Signature of the student)

P.T.O.

RULES & REGULATIONS FOR EARLY DECLARATION OF RESULTS

1. Request for early declaration of results will be entertained for final semester/year or maximum of 4 backlog courses only, subject to the following conditions:-
 - i) The student has been selected for higher study/employment and statement of marks/grade card is required to be produced to the institute by a particular date, which is before the prescribed dates of declaration of the University's results.
 - ii) The student has completed all the other prescribed components except the term-end examination of the courses, for which early evaluation has been sought.
2. Application for early declaration, for the reasons such as to apply for recruitment/higher study/post and promotion purpose etc. will not be entertained.
3. Application without enclosing documentary evidence specifying the reason for early declaration will not be entertained.
4. Application form must reach at the following address before the date of the examination for the course (s) for which early evaluation is sought:-

Sl.No.	Address of Evaluation Centre	Jurisdiction of Evaluation Centre
1.	Dy. Registrar Evaluation Centre Block-5, IGNOU, Maidan Garhi New Delhi-110068	All Examination Centres within Delhi-1, Delhi-2, Delhi-3, All Schools and Divisions at Hqs.
2.	Dy. Registrar Evaluation Centre, Periyar Thidal No.50, EVK Sampath Road Veperiy Chennai – 600 007	All Examination Centres in Chennai, Hyderabad, Port Blair, Vijayawada, Trivandrum, Cochin, Bangalore, Madurai, Panaji, Nagpur and Sub-RC Vatakara.
3.	Dy. Registrar Evaluation Centre IGNOU Regional Centre 2 nd Floor, Biscomaun Tower W. Gandhi Maidan, Patna -800 001	All Examination Centres in Patna, Raipur, Bhuvneshwar, Koraput, Siliguri and Raghunathganj.
4.	Dy. Registrar Evaluation Centre, IGNOU Regional Centre, B-1/33, Sector-H, Aliganj Lucknow – 226 024	All Examination Centres in Lucknow, Varanasi, Aligarh, Dehradun, Noida, Karnal, Chandigarh, Khanna, Shimla, Jammu and Srinagar,
5.	Dy. Registrar Evaluation Centre, IGNOU Regional Centre, 1 st Floor, MSFC Building 270, Senapati Bapat Road, Pune-411016	All Examination Centres in Pune, Ahmedabad, Bhopal, Jabalpur, Jaipur, Rajkot and Mumbai.
6.	Dy. Registrar Evaluation Centre, IGNOU Regional Centre, H/No.71, GMC Road Christian Basti, Guwahati – 781 005	All Examination Centres in Guwahati, Itanagar, Imphal, Shilong, Agartala, Gangtok, Kohima and Aizwal.
7.	Dy. Registrar Evaluation Centre “Mangolik” H/H-19/1, Baguipara PO- Aswini Nagar, VIP Road Baguiati, Kolkata-700091.	All Examination Centres in Kolkata, Darbhanga and Ranchi.

**INDIRA GANDHI NATIONAL OPEN UNIVERSITY
 MAIDAN GARHI, NEW DELHI-110068**

APPLICATION FORM FOR RE-EVALUATION OF ANSWER SCRIPT

1. Name :

2. Programme : Enrolment No.

3. Address:.....

..... PIN:

4. Month and Year of the Exam :

5. Examination Centre Code :

6. Address of Examination Centre:

.....

7. Courses, in which Re-evaluation is sought	COURSE CODE	MARKS/ GRADE OBTAINED
.....
.....
.....
.....
.....

8. **Fee detail:**
 (The fee for Re-evaluation of answer script is ₹ 500/- per course, which is to be paid through demand draft drawn in favour of 'IGNOU' & payable at the City of Evaluation Centre)

No. of Course(s): × ₹ 500/- = Total Amount:

Demand Draft No. Date:

Issuing Bank:

Date:

Signature of the student
(P.T.O)

RULES & REGULATION FOR RE-EVALUATION OF ANSWER SCRIPTS

- 1) The request for re-evaluation by the student must be made within one month of declaration of his/ her results.
- 2) The date of declaration of result will be calculated from the date on which the result(s) are placed on the IGNOU website.
- 3) After re-evaluation, the better of the two scores of original marks/grade and marks/grade after re-evaluation will be considered.
- 4) The revised marks/grade after re-evaluation shall be communicated to the student on receipt of re-evaluation result and result of re-evaluation will also made available on the IGNOU website at www.ignou.ac.in. The minimum time required for re-evaluation shall be 30 days from the date of receipt of application.
- 5) Re-evaluation is permissible in TEE only and not in the Project/Dissertation Practicals/Lab courses, Workshops, Assignments & Seminar etc.
- 6) On the top of the envelope containing the prescribed application form,
Please mention ‘**APPLICATION FORM FOR RE-EVALUATION OF ANSWER SCRIPTS**’
- 7) The application form duly filled-in may be sent to the following address except CPE* &DPE* programmes.
- 8) **Application form must reach within the prescribed dates at the following address:**

Sl.No.	Address of Evaluation Centre	Jurisdiction of Evaluation Centre
1.	Dy. Registrar Evaluation Centre Block-5, IGNOU, Maidan Garhi New Delhi-110068	All Examination Centres within Delhi-1, Delhi-2, Delhi-3, All Schools and Divisions at Hqs.
2.	Dy. Registrar Evaluation Centre, Periyar Thidal No.50, EVK Sampath Road Vepery Chennai – 600 007	All Examination Centres in Chennai, Hyderabad, Port Blair, Vijayawada, Trivandrum, Cochin, Bangalore, Madurai, Panaji, Nagpur and Sub-RC Vatakara.
3.	Dy. Registrar Evaluation Centre IGNOU Regional Centre 2 nd Floor, Biscomaun Tower W. Gandhi Maidan, Patna -800 00	All Examination Centres in Patna, Raipur, Bhuvneshwar, Koraput, Siliguri and Raghunathganj.
4.	Dy. Registrar Evaluation Centre, IGNOU Regional Centre, B-1/33, Sector-H, Aliganj Lucknow – 226 024	All Examination Centres in Lucknow, Varanasi, Aligarh, Dehradun, Noida, Karnal, Chandigarh, Khanna, Shimla, Jammu and Srinagar,
5.	Dy. Registrar Evaluation Centre, IGNOU Regional Centre, 1 st Floor, MSFC Building 270, Senapati Bapat Road, Pune-411016	All Examination Centres in Pune, Ahmedabad, Bhopal, Jabalpur, Jaipur, Rajkot and Mumbai.
6.	Dy. Registrar Evaluation Centre, IGNOU Regional Centre, H/No.71, GMC Road Christian Basti, Guwahati – 781 005	All Examination Centres in Guwahati, Itanagar, Imphal, Shilong, Agartala, Gangtok, Kohima and Aizwal.
7.	Dy. Registrar Evaluation Centre “Mangolik” H/H- 19/1, Baguipara Baguiati P.O- Aswininagar, VIP Road, Kolkata -700159	All Examination Centres in Kolkata, Darbhanga and Ranchi.

* For the photocopy(ies) of the answer script(s) of CPE & DPE programmes, the application form may be sent to the Regional Centre concerned.



**INDIRA GANDHI NATIONAL OPEN UNIVERSITY
STUDENT EVALUATION DIVISION**

APPLICATION FORM FOR IMPROVEMENT IN DIVISION/CLASS

(Rules & regulations are mentioned on the reverse side of this form. Please go through them carefully before filling up the form).

Prescribed dates for submission of form: 1st to 30th April for June Term-end Exam.

1st to 31st October for December Term- end Exam.

1. Name:

2. Programme: Enrolment No:

3. Address:

.....

..... Pin

--	--	--	--	--	--

4. Term-end examination, in which programme completed June and December

Total marks/Overall point grade obtained Percentage obtained

.....

(Please enclosed photocopy of the statement of marks/grades card)

5. Courses(s), in which improvement is sought:

	COURSE CODE	COURSE CODE
--	-------------	-------------

1. _____ 4. _____

2. _____ 5. _____

3. _____

6. **Fee details:**

(The fee for Improvement in Division/Class is Rs. 500/- per course, which is to be paid through demand draft drawn in favour of IGNOU & payable at New Delhi)

No. of Course(s): X ₹ 500/- = Total Amount:

Demand Draft No.: Date:

Issuing Bank:

7. Term-end examination, in which you wish to appear:- June/December

8. Examination centre details, where you wish to appear in term-end examination:-

Exam. Centre Code..... City/Town

.....

UNDERTAKING

I hereby undertake that I shall abide by the rules & regulations prescribed by the University for improvement in Division/Class

Date:.....

Signature.....

Place:

Name:

RULES & REGULATION FOR IMPROVEMENT IN DIVISION/CLASS

1. The improvement of marks/grades is applicable only for the Bachelor's/Master's Degree Programmes, who have completed the programme. The eligibility is as under:-
 - a) The students of Bachelor's/Master's Degree Programmes who fall short of 2% marks to secure 2nd and 1st division.
 - b) The students of Master's Degree Programmes only, who fall short of 2% marks to secure overall 55% marks.
2. Only one opportunity will be given to improve the marks/grade.
3. The improvement is permissible only in theory papers. No improvement is permissible in Practicals/Lab courses, Projects, Workshops and Assignments etc.
4. Under the Provision of improvement, a maximum of 25% of the maximum credits required for successful completion of a programme shall be permitted.
5. Students wishing to improve the marks will have to apply within six months from the date of issue of final statement of marks/grade card to them, subject to the condition that their registration for the programme/course being applied for improvement, is valid till the next term-end examination in which they wish to appear for improvement.
6. No student will be permitted to improve if maximum duration to complete the programme, including the re-admission period, has expired.
7. After appearing in the examination for improvement, better of the two examinations, i.e. marks/grade already awarded and the marks/grade secured in the improvement examination will be considered.
8. In case of improvement, the month and year of completion of the programme will be changed to the Term-end examination, in which students appeared for improvement.
9. Students will be permitted for improvement of marks/grades provided the examination for the particular course, in which they wish to improve, is being conducted by the University at that time.
10. On the top of the envelope containing the prescribed application form, **Please mention "APPLICATION FORM FOR IMPROVEMENT IN DIVISION/CLASS.**
11. Application form must reach within the prescribed dates at the following address:-

**The Registrar,
Student Evaluation Division,
Indira Gandhi National Open University,
Maidan Garhi,
New Delhi-110068**

INDIRA GANDHI NATIONAL OPEN UNIVERSITY
STUDENT EVALUATION DIVISION
APPLICATION FORM FOR ISSUE OF OFFICIAL TRANSCRIPT

1. Name:
2. Programme: Enrolment No:

--	--	--	--	--	--	--	--	--	--
3. Address:
.....
..... Pin

--	--	--	--	--	--
4. Purpose for which:
transcript is required
5. **Fee detail:**
Fee for the official transcript:-
Rs. 200/- per transcript, if to be sent to the student/institute in India.
Rs. 400/- or US\$1000 per transcript, if required to be sent to the Institute outside India by the University.
(The requisite fee is required to be paid through demand draft drawn in favour of 'IGNOU' & payable at 'New Delhi')

No. of transcript(s): × Rs. 200/ Rs. 400/- or US\$100 = Total Amount: Rs..... Required

Demand Draft No.: Date:

Issuing Bank:

6. Whether the transcripts to be mailed by the University: Yes/No (please tick)
7. Name & Address of the University/Institute/Employer (In capital letters) to whom transcript is required to be sent (attached a separate list, if required)
.....
.....
.....

Date:.....

(Signature of the student)

The filled in form with the requisite fee is to be sent to:-

**The Registrar,
Student Evaluation Division,
Indira Gandhi National Open University,
Maidan Garhi,
New Delhi-110068.**

Note: The students are required to enclose same number of legible photocopies of both sides of the statement of marks/grade card issued to them, as the number of transcripts required.



INDIRA GANDHI NATIONAL OPEN UNIVERSITY
Maidan Garhi, New Delhi-110 068

APPLICATION FORM FOR OBTAINING DUPLICATE GRADE CARD/ MARKSHEET

Name

Enrolment No.

--	--	--	--	--	--	--	--	--	--

Address

.....

.....

.....

.....

Pin

--	--	--	--	--	--

Programme

Month and Year of the Exam.

Centre from where appeared at
 last examination

Bank Draft / IPO No. Dated

for ₹ 150/- in favour of IGNOU, New Delhi

.....
 Signature

Phone :

Date :

Note : Fee for duplicate grade card ₹150/-. The duplicate grade card/mark sheet will be sent by Registered post.

The filled in form with the requisite fee is to be sent to :

The Registrar (Student Evaluation Division)
 Indira Gandhi National Open University
 Maidan Garhi,
 New Delhi-110 068

**FORM OF CASTE CERTIFICATE TO BE SENT BY THE CANDIDATE BELONGING TO SC/ST
CATEGORIES ALONG WITH APPLICATION FORM
FORM OF CASTE/TRIBE CERTIFICATE**

This is to certify that Shri/Shrimathi*/Kumari*.....Son/daughter* of
of village/town*.....in District/ Division*.....of the State/Union
Territory*.....belongs to the..... Caste/Tribe* which is recognized as a Scheduled
Caste Scheduled Tribe* Under:

The Constitution (Scheduled Castes) Order, 1950.

*The Constitution (Scheduled Tribes) Order, 1950.

*The Constitution (Scheduled Castes) (Union Territories) Order, 1951.

*The Constitution (Scheduled Tribes) (Union Territories) Order, 1951.

(As amended by the Scheduled Castes and Schedules Tribes Lists (Modification Order) 1956, the Bombay Reorganization Act, 1960, the Punjab Reorganization Act, 1966, the State of Himachal Pradesh Act, 1970, the North- Eastern Areas (Reorganization) Act, 1971 and the Scheduled Castes and Schedules Tribes Orders (Amendment) Act, 1976.)

*The Constitution (Jammu and Kashmir) Scheduled Castes Order, 1956;

*The Constitution (Andaman and Nicobar Islands) Scheduled Tribes Order, 1959, as amended by the Scheduled
Castes and Scheduled Tribes Orders (Amendment) Act, 1976;

*The constitution (Dadra and Nagar Haveli) Scheduled Castes Order, 1962;

*The Constitution (Dadra and Nagar Haveli) Scheduled Tribes Order, 1962;

*The Constitution (Pondicherry) Scheduled Castes Order, 1964;

*The Constitution (Uttar Pradesh, Scheduled Tribes Order, 1967;

*The Constitution (Goa, Daman and Diu) Scheduled Castes Order, 1968;

*The Constitution (Goa, Daman and Diu) Scheduled Tribes Order, 1968;

*The Constitution (Nagaland) Scheduled Tribes Order, 1970; *The Constitution (Sikkim) Scheduled Castes Order,

1978; *The Constitution (Sikkim) Scheduled Tribes Order, 1978; *The Constitution (Jammu and Kashmir) Scheduled
Tribes Order, 1989. *The Constitution (Scheduled Castes) Order (Amendment) Act, 1990. *The Constitution (Scheduled
Tribes) Order Amendment Act, 1991. *The Constitution (Scheduled Tribes) Order Second Amendment Act, 1991.

2. **This certificate is issued on the basis of the Scheduled Castes/Scheduled Tribes Certificate issued to Shri/
Shrimathi*.....father/mother* of Shri/Shrimathi/Kumari*.....of village/
town*.....in District/Division*.....of the State/Union Territory*.....who belong
to the Caste/Tribe* which is recognized as a Scheduled Caste/Scheduled Tribe* in the State/Union
Territory*.....issued by thedated.....

3. Shri/Shrimathi*/Kumari*.....and /or* his/her* family ordinarily reside(s) in village/
town*.....ofDistrict/Division* of the State/Union Territory* of
.....

District Magistrate

Deputy Commissioner, etc.

Dated:

SEAL _____

* Strike out whichever is not applicable

Note:- The term "Ordinarily resides" used here will have the same meaning as in Section 20 of the Representation of the
Peoples Act, 1950.

* Please delete the words which are not applicable.

** Applicable in the case of SCs, STs persons who have migrated from one State/UT (Employment News 9/92

**FORM OF CASTE CERTIFICATE TO BE SENT BY THE CANDIDATE BELONGING TO OBC
(NON CREAMY LAYER) CATEGORIES ALONG WITH
APPLICATION FORM**

This is to certify that, son/daughter of....., of village..... District/
Division..... in the State..... belongs to the..... community which is recognized as a Backward
Class in under following resolutions of Government of India, Ministry of Welfare*(i) Resolution No.12011/68/93-BCC (C), dated
the 10th September, 1993, published in the Gazette of India,

Extraordinary, Part-I, Section I, No. 186, dated the 13th September, 1993,

* (ii) Resolution No.12011/9/94-BCC, dated the 19th October, 1994, published in the Gazette of India, Extraordinary,
Part-I, Section I, No.163, dated the 20th October, 1994.

* (iii) Resolution No.12011/7/95-BCC, dated the 24th May, 1995, published in the Gazette of India, Extraordinary,
Part-I, Section I, No.88, dated the 25th May, 1995.

* (iv) Resolution No.12011/44/96-BCC, dated the 6th December, 1996, published in the Gazette of India, Extraordinary,
Part-I, Section I, No.210, dated the 11th December, 1996.

* (v) Resolution No. 12011/96/94-BCC dated 9/03/96.

* (vi) Resolution No. 12011/13/97-BCC dated 03/12/97.

* (vii) Resolution No. 12011/99/94-BCC dated 11/12/97.

* (viii) Resolution No. 12011/68/98-BCC dated 27/12/99.

* (ix) Resolution No. 12011/88/98-BCC dated 06/12/99 published in the Gazette of India Extraordinary Part I
Section I No. 270 dated 06/12/99.

* (x) Resolution No. 12011/36/99-BCC dated 04/04/2000 published in the Gazette of India Extraordinary Part I
Section I No. 71 dated 04/04/2000.

* (xi) Resolution No. 12011/44/99-BCC dated 21/09/2000 published in the Gazette of India Extraordinary Part I
Section I No. 210 dated 21/09/2000.

* (xii) Resolution No. 12015/9/2000-BCC dated 06/09/2001.

* (xiii) Resolution No. 12011/1/2001-BCC dated 19/06/2003.

* (xiv) Resolution No. 12011/4/2002-BCC dated 13/01/2004.

* (xv) Resolution No. 12011/9/2004-BCC dated 16/01/2006 published in the Gazette of India Extraordinary Part I
Section I No. 210 dated 16/01/2006.

* Shri..... and/or his/her family ordinarily reside(s) in the..... District/Division of
the..... State. This is also to certify that he/she does not belong to the persons/sections(Creamy Layer)
mentioned in Column 3 of the Schedule to the Government of India, Department of Personnel and Training, O.M. No.36012/
22/93-Estt.(SCT), dated 8-9-1993 which is modified vide OM No. 36033/3/ 3004 Estt. (Res) dated 09/03/2004.

District Magistrate

Deputy Commissioner, etc.

Dated:

SEAL _____

*Strike out whichever is not applicable

N.B.—

(a) The above certificate should not be more than 3 years old from the date of issuance till the time of submission of application
form

(b) The term 'Ordinarily' used here will have the same meaning as in Section 20 of the Representation of the People's Act, 1950.

(c) The authorities competent to issue caste certificates are indicated below:

(i) District Magistrate/Additional Magistrate/Collector/Deputy Commissioner/Additional Deputy Commissioner/ Deputy
Collector/First Class Stipendiary Magistrate/Sub-Divisional Magistrate/Taluka Magistrate/Executive Magistrate/Extra
Assistant Commissioner (not below the rank of First Class Stipendiary Magistrate).

(ii) Chief Presidency Magistrate/Additional Chief Presidency Magistrate/Presidency Magistrate. (iii)Revenue Officer not
below the rank of Tehsildar; and (iv)Sub-Divisional Officer of the area where the candidate and/or his family resides

NOTE: IF THE CERTIFICATE FURNISHED BY OBC CANDIDATES(NON-CREAMY LAYER) FOUND TO BE FAKE AT LATER
STAGE, ADMISSION WILL BE CANCELLED WITH NO REFUND OF FEE AND DISCIPLINARY PROCEEDINGS WILL BE
INITIATED BY THE UNIVERSITY.

Serial No.	
------------	--

Control No.

INSTRUCTIONS

1. Please submit your exam form at the concerned Regional Centre under which your examination centre falls.
2. Write in CAPITAL LETTERS only within the box without touching the lines as shown in the sample below.

0	1	2	3	4	5	6	7	8	9	A	B	C	D	E	F	G	H	I	J	K	L	M	N	O	P	Q	R	S	T	U	V	W	X	Y	Z
---	---	---	---	---	---	---	---	---	---	---	---	---	---	---	---	---	---	---	---	---	---	---	---	---	---	---	---	---	---	---	---	---	---	---	---

--

Programme Code		Regional Centre Code		Study Centre Code	
----------------	--	----------------------	--	-------------------	--

Enrolment No.		Exam Centre Code (Where you wish to appear in Exam)	
---------------	--	--	--

Name of the Candidate: (Leave one box empty between First Name, Middle Name and Surname)

--

Address for Correspondence (Do not give Post Box No. Leave box blank between each unit of address like House No., Street Name, PO, etc.)

--

--

City

--

District

--

State

--

Pin Code

--

MOBILE NO.

--

COURSE OPTION:

Course codes for which appearing for the first time OR failed in the earlier TEEs including Practical Courses for BCA, MCA, BIT / ADIT / PGDLAN / BLIS Programmes **FEE @ ₹ 60/- PER COURSE (Demand draft in favour of IGNOU and payable at Regional Centre under which your exam centre falls.)**

S.No.	Course Code	S.No.	Course Code
1.		9.	
2.		10.	
3.		11.	
4.		12.	
5.		13.	
6.		14.	
7.		15.	
8.		16.	

FEE DETAILS (Please write your Name & Enrolment No. at the back of the Draft)

Total No. of Course		Total Amount
Theory Courses	× ₹ 60	
Practical Courses	× ₹ 60	
Late Fee		
TOTAL		

1. Draft No.	
--------------	--

Amount	
--------	--

2. Draft No.	
--------------	--

Amount	
--------	--

Date	/ /
------	-----

Issuing Branch	
----------------	--

Payable at: (Regional Centre under which your exam centre falls)	
--	--

SIGNATURE OF THE STUDENT

(within the Box only) 

--

ISSUING BANK

--

Dates for Submission of Exam Forms

FOR JUNE TEE	LATE FEE	FOR DEC TEE	LATE FEE	SUBMISSION OF EXAM FORM
1 March to 31 March	NIL	1 Sept. to 30 Sept.	NIL	ONLY AT THE CONCERNED REGIONAL CENTRE UNDER WHICH YOUR EXAMINATION CENTRE FALLS
1 April to 20 April	₹ 300/-	1 Oct. to 20 Oct.	₹ 300/-	
21 April to 30 April	₹ 500/-	21 Oct. to 31 Oct.	₹ 500/-	
1 May to 15 May	₹ 1000/-	1 Nov. to 15 Nov.	₹ 1000/-	

***Exam for these students will be conducted at Regional Centre city only.**

Before submitting the examination form please ensure that:

- The required number of assignments as applicable for the course(s) filled in the examination form have been submitted.
- The authentication certificate is duly signed by the Coordinator/Incharge of your Study Centre/PSC/PI...etc.
- Registration for the course(s) is valid and not time-barred.
- **Examination fee Rs. 60/- per course has been remitted and the relevant proof enclosed.**
- In case examination fee is submitted through demand draft please ensure that the **demand draft is made in favour of IGNOU and payable at the city of the Regional Centre where you are submitting your examination form.**
- The enrolment number, programme code, course code are correctly filled in the examination form. **In case of non-compliance of any of the above conditions candidature for appearing in the Term-end Examination will not be considered and no Hall Ticket will be issued.**

PLEASE NOTE :

Examination fee per course is - **Rs. 60/- (Examination fee once paid will not be refunded/adjusted in any case)**
 Examination form to be submitted at - **Regional Centre under which your examination centre falls**
 Demand draft to be made in favour of - **IGNOU and payable at the city where submitting the exam form**

INSTRUCTIONS FOR FILLING UP THE EXAMINATION FORM

1. Please fill in the course(s) only for which the assignments have been submitted by you within the scheduled time. No Hall Ticket will be issued in case the assignments for the course(s) have not been submitted.
2. Please write correct course code(s) as indicated in your Programme Guide, failing which the course(s) will not be included in Hall Ticket for taking examination (For example ECO-01/MS-02).
3. In case wrong/invalid course code is mentioned in examination form, the course will not be included in the Hall Ticket and the examination fee paid will not be refunded.
4. Examination form should be submitted only once for each Term-end Examination.
5. Please send the examination form by Registered/Speed Post and retain the proof of its mailing till you receive the Hall Ticket.
6. Term-end Examination result is also available on the University website (www.ignou.ac.in). Please see the result status before filling examination form.
7. It is advised to enclose/forward only the Examination Fee along with this form. Any other fee (registration/re-registration) forwarded with this form will result in rejection of the examination form.
8. Examination form received without examination fee or late fee (if applicable) will similarly be rejected.
9. Students of BA/B.Com./BCA/BTS Programme can take examination for courses up to 48 credits and those of Management Programme can take examination for a maximum of 8 courses at a time.
10. Normally the Study Centre is the Examination Centre. In case you wish to take examination at a particular centre the code of your chosen centre be filled up as Examination Centre Code. However, if Examination Centre chosen by you is not activated you will be allotted another Examination Centre under the same Region.
11. **In case you fail to receive Examination Intimation Slip/Hall Ticket one week before the commencement of examination you may visit our website (www.ignou.ac.in) and download the Hall Ticket and report at the Examination Centre with your Identity Card.**
12. Change of Examination Centre, once allotted, is not permissible under any circumstances.
13. No student will be allowed two Exam Centres for a TEE.

DECLARATION

I hereby declare that I have read and understood the instructions given above. I also affirm that I have submitted all the required number of assignments as applicable for the course(s) filled in the examination form and my registration for the course(s) is valid and not time barred. If any of my statements is found to be untrue, I will have no claim for taking examination. I undertake that I shall abide by the rules and regulations of the University.

Date _____

(Signature of the student)

Phone No. (R) _____ Mobile No. _____ Email Id _____

Phone No. (O) _____ (with STD code)

**AUTHENTICATION BY CO-ORDINATOR/INCHARGE OF
 STUDY CENTRE/PROGRAMME STUDY CENTRE/PARTNER INSTITUTION/
 COMMUNITY COLLEGE**

It is to certify that the student has submitted all the assignment(s) for the course(s) filled in the examination form.

Centre Code _____

(Signature & Stamp of Co-ordinator/Incharge)

Date _____

AFFIDAVIT BY THE STUDENT

(TO BE SUBMITTED ALONG WITH APPLICATION FORM AT THE TIME OF COUNSELING)

I, _____ (full name of the student with admission/ registration/enrolment number) s/o d/o Mr./Mrs./Ms. _____ having been admitted to _____ (name of the institution), have received a copy of the UGC Regulations on Curbing the Menace of Ragging in Higher Educational Institutions, 2009, (hereinafter called the “Regulations”) carefully read and fully understand the provisions contained in the said Regulations.

2. I have, in particular, perused clause 3 of the Regulations and am aware as to what constitutes ragging.

3. I have also, in particular, perused clause 7 and clause 9.1 of the Regulations and am fully aware of the penal and administrative action that is liable to be taken against me in case I am found guilty of or abetting ragging, actively or passively, or being part of a conspiracy to promote ragging.

4. I hereby solemnly aver and undertake that

a) I will not indulge in any behaviour or act that may be constituted as ragging under clause 3 of the Regulations.

b) I will not participate in or abet or propagate through any act of commission or omission that may be constituted as ragging under clause 3 of the Regulations.

5. I hereby affirm that, if found guilty of ragging, I am liable for punishment according to clause 9.1 of the Regulations, without prejudice to any other criminal action that may be taken against me under any penal law or any law for the time being in force.

6. I hereby declare that I have not been expelled or debarred from admission in any institution in the country on account of being found guilty of, abetting or being part of a conspiracy to promote, ragging and further affirm that, in case the declaration is found to be untrue, I am aware that my admission is liable to be cancelled. Declared this _____ day of _____ month of _____ year.

Signature of deponent

Name : _____
Address: _____
Tel./Mobile No. _____

VERIFICATION

Verified that the contents of this affidavit are true to the best of my knowledge and no part of the affidavit is false and nothing has been concealed or misstated therein.

Verified at _____ (place) this the _____ (day) of _____ (month), _____ (year).

Signature of deponent

Solemnly affirmed and signed in my presence on this the _____ (day) of _____ (month), _____ (year) after reading the contents of this affidavit.

OATH COMMISSIONER

AFFIDAVIT BY PARENT/GUARDIAN

(TO BE SUBMITTED ALONG WITH APPLICATION FORM AT THE TIME OF COUNSELING)

I, Mr./Mrs./Ms. _____ (full name of parent/guardian/father/mother/guardian of, _____ (full name of student with admission/registration/enrolment number), having been admitted to _____ (name of the institution), have received a copy of the UGC Regulations on Curbing the Menace of Ragging in Higher Educational Institutions, 2009, (hereinafter called the “Regulations”) carefully read and fully understand the provisions contained in the said Regulations.

2. I have, in particular, perused clause 3 of the Regulations and am aware as to what constitutes ragging.
3. I have also, in particular, perused clause 7 and clause 9.1 of the Regulations and am fully aware of the penal and administrative action that is liable to be taken against me in case I am found guilty of or abetting ragging, actively or passively, or being part of a conspiracy to promote ragging.
4. I hereby solemnly aver and undertake that
 - a) I will not indulge in any behaviour or act that may be constituted as ragging under clause 3 of the Regulations.
 - b) I will not participate in or abet or propagate through any act of commission or omission that may be constituted as ragging under clause 3 of the Regulations.
5. I hereby affirm that, if found guilty of ragging, I am liable for punishment according to clause 9.1 of the Regulations, without prejudice to any other criminal action that may be taken against me under any penal law or any law for the time being in force.
6. I hereby declare that I have not been expelled or debarred from admission in any institution in the country on account of being found guilty of, abetting or being part of a conspiracy to promote, ragging and further affirm that, in case the declaration is found to be untrue, I am aware that my admission is liable to be cancelled.

Declared this _____ day of _____ month of _____ year.

Signature of deponent

Name :

Address :

Telephone/Mobile No. :

VERIFICATION

Verified that the contents of this affidavit are true to the best of my knowledge and no part of the affidavit is false and nothing has been concealed or misstated therein.

Verified at _____ (place) this the _____ (day) of _____ (month), _____ (year).

Signature of deponent

Solemnly affirmed and signed in my presence on this the _____ (day) of _____ (month), _____ (year) after reading the contents of this affidavit.

IGNOU POLICY REGARDING SEXUAL HARASSMENT AT THE WORKPLACE

In compliance with the guidelines of the Supreme Court, IGNOU has adopted a policy that aims to prevent/prohibit/punish sexual harassment of women at the workplace. Academic/non-academic staff and students of this University come under its purview.

Information on this policy, rules and procedures can be accessed on the IGNOU website (www.ignou.ac.in). Incidents of sexual harassment may be reported to the Regional Director of the Regional Centre you are attached to or to any of the persons below:

Apex Committee Against Sexual Harassment (ACASH)

Prof. Anu Aneja Chairperson, SOGDS	011-29571614 Chairperson	anuaneja@ignou.ac.in
Dr. Zeba Khan, DD, EMPC	011-29573394	zkhan@ignou.ac.in
Ms. Kalyani Menon Sen, Feminist Activist		kmenonsen@gmail.com
Prof. Parvin Sinclair Director (NCERT)	011-26519154	

IGNOU Committee against Sexual Harassment (ICASH)

Prof. Srilatha Chairperson, SOMS	011-29573009	srilatha@ignou.ac.in
Prof. Malati Mathur Professor, SOH	011-29572783	malati_mathur@ignou.ac.in
Ms. Poonam Bhushan Associate Professor, SOE	011-29572934	pbhushan@ignou.ac.in
Prof. Dolly Mathew Professor, SOSS	011-29572728	umamedury@ignou.ac.in
Ms. Santosh Gogia, AR, SOEDS	011-29571666	sgogia@ignou.ac.in
Ms. Rajni A. Jeet, AR, CU	011-29571518	rajnijeet@ignou.ac.in
Mr. Praveen Kr. Sharma SPA, SOPVA	011-29571651	parveenkumarsharma@ignou.ac.in
Ms. Neelam Rawat, SO, Admn.	011-29571422	neelamrawat@ignou.ac.in
Ms. Sandhya, RTA, SOSS	9312731589	sandhyachopra@hotmail.com
Ms. Chitra Mudgal (Writer, Novelist)		
Ms. Kamla Vishvanathan, Jagori NGO	9810341103	

Regional Services Division Committee against Sexual Harassment (RSDCASH)

	011-29534034	ashakhar@ignou.ac.in
Dr. Neeta Kapai Dy. Director, RSD	011-29572108	nkapai@ignou.ac.in
Ms. Seema Chandok Dy. Librarian, Library Div.	011-29571909	seemachandok@ignou.ac.in
Ms. Sharda, JAT, Gen. Admn.	011-29571418	
Ms. Mridula Tandon, Sakshi NGO		

Guidelines for filling up the application form for the Post Basic B.Sc. Nursing January, 2015 session.

1. Name of the Programme Applied: Post Basic B.Sc. Nursing.
2. Programme Code : B S C N (PB)
3. At Sl. No. 3 For Exam Centre Code: Please use **Study Centre Code given in Appendix V (Also check Ignou Website)**
4. Regional Centre Code: Select from Appendix – V i.e. the state/city where you want to take exam. **(Also see ignou.ac.in)**
5. At Sl. No. 5, Programme Study Centre Code (PSC) : Leave it blank
6. In case of medium of study please fill code A1 for English, B2 for Hindi and C3 for other language.
7. State Code: Select from Appendix – XI
8. At S.No. 8 write A1 for yes and B2 for not registered. Fill it only if you have enrolled in any other programme of IGNOU.
9. At S. No. 9 write Name of the Candidate as mentioned in class X/XII mark-sheet or equivalent certificate.
10. AT S. No. 10 write Name of the Father/Mother/Husband. Please write S/o or D/o for Father/Mother's Name and W/o for Husband's Name.
11. At S. No.11 write House No. in at (a) Street Name at (b) Locality / Mohalla in (c) Tehsil/District in (d) City in (e) Pin code at (f) State at (g).
12. At S. No. 12 write landline no. at (a) email ID at (b) and mobile no. at (c). (Phone no. and e mail is mandatory write clearly, correctly and legibly).
13. At S.No13 write date of birth,date ,month ,year correctly
14. Please write A1 for Indian and B2 for others. (Please specify the particular country, if you fill B2).
15. At S. No. 15 please write A1 for Male, B2 for Female and C3 for Others.
16. At S. No. 16 please write A1 for General, B2 for SC, C3 for ST, D4A for OBC (Creamy) D4B for OBC (Non-Creamy) and E for minority.
17. At S.No. 17 please write A1 for urban area, B2 for Rural area and C3 for Tribal area.
18. At. S. No. 18 for Marital Status: Please write A1 for married and B2 for unmarried.
19. At S. No. 19 for Religion: Please write A1 for Hindu, B2 for Muslim, C3 for Christian, D4 for Sikh, E5 for Jain, F6 for Buddhist, G7 for Parsi, H8 for Jews and I9 for other religion.
20. At S.No. 20 for Social Status: Please write A1 for Ex-Serviceman and B2 for War Widows C3 for Not Applicable
21. Whether Kashmiri Migrant: Please write A1 for Yes and B2 for No. (Government of India rule will be followed for this category)
22. Employment Status: Please write A1 for unemployed, B2 for IGNOU regular Employee, C3 for Employed and D4 for KVS employee.
23. At Sl. No. 23, fill up as applicable.
24. At S. No. 24 for Disability at a. Please write A1 for Yes and B2 for No.
b. kindly provide details of disability: Please write A1 for Speech and Hearing Impairment, B2 for Locomotor Impairment, C3 for Visual Impairment, D4 for Low Vision and E5 for any other, please specify if you fill E5.
25. At S.No. 25 for Educational Qualification: At a. Please write code A1 for 10th and B2 for 12th
At b. write main subjects of 10th/12th
At c. write year of passing
26. At S.No. 26(a) write the year of completion of State Board/Concil Examination/GNM Examination and write percentage of marks obtained in Aggregate for all the years of GNM in relevant colums against each. (Fill it correctly). Since percentage of marks is required for tie break aggregate percentage will be considered only.
At S. No. 26 (b), write year of passing GN and percentage of marks obtained in GN if applicable in relevant box.
At S.No. 26 (c), write the year of passing midwifery and percentage of marks in midwifery if applicable in relevant box.
At S.No. 26 (d), write name of registration council
At S.No. 26 (e), write year of registration as RN and registration no. of RN in relevant box.
At S.No. 26 (f), write year of registration as RM and registration no. of RM in relevant box.
27. At S.No. 27 write total marks obtained in each year, total maximum marks and percentage of marks in relevant column.
28. At S.No. 28 write the S. No. and name of course done in lieu of midwifery. Write the name of the council and period (from and to in relevant box).
29. At S.No. 29 write the name of organisation, designation, date of service and length of experience in the relevant box.
30. At S.No. 30 Details of remittance: a. Please write code A1 for cash challan and B2 for Demand draft.

INSTRUCTIONS					APPLICATION NO.																																																																																																																																																																																		
1. Please read the instructions in the information brochure before filling up the form. 2. Please use Black/Blue Ball Point Pen in boxes using English CAPITAL LETTERS or English numerals. 3. Do not make any stray marks on this sheet. 4. Do not staple, pin, wrinkle scribble, tear or wet this sheet. 5. Write in CAPITAL LETTERS only within box. Leave blank between words as shown in the example below. 6. Apply only if you have completed 2 years of experience after RNRM Registration from State Nursing Council upto the last date of submission of Application) 7. Apply if you are in service.	<table border="1" style="width:100%; height: 20px; border-collapse: collapse;"> <tr> <td style="width: 16.6%;"> </td><td style="width: 16.6%;"> </td><td style="width: 16.6%;"> </td><td style="width: 16.6%;"> </td><td style="width: 16.6%;"> </td><td style="width: 16.6%;"> </td><td style="width: 16.6%;"> </td><td style="width: 16.6%;"> </td><td style="width: 16.6%;"> </td><td style="width: 16.6%;"> </td><td style="width: 16.6%;"> </td><td style="width: 16.6%;"> </td><td style="width: 16.6%;"> </td><td style="width: 16.6%;"> </td><td style="width: 16.6%;"> </td><td style="width: 16.6%;"> </td><td style="width: 16.6%;"> </td><td style="width: 16.6%;"> </td><td style="width: 16.6%;"> </td> </tr> </table>																																																																																																																																																																																						
<table border="1" style="width:100%; border-collapse: collapse;"> <tr> <td style="width: 16.6%;">A</td><td style="width: 16.6%;">B</td><td style="width: 16.6%;">C</td><td style="width: 16.6%;">D</td><td style="width: 16.6%;">E</td><td style="width: 16.6%;">F</td><td style="width: 16.6%;">G</td><td style="width: 16.6%;"> </td><td style="width: 16.6%;">I</td><td style="width: 16.6%;">J</td><td style="width: 16.6%;">K</td><td style="width: 16.6%;">L</td><td style="width: 16.6%;"> </td><td style="width: 16.6%;">N</td><td style="width: 16.6%;">O</td><td style="width: 16.6%;">P</td><td style="width: 16.6%;">Q</td><td style="width: 16.6%;">R</td><td style="width: 16.6%;">S</td><td style="width: 16.6%;">T</td><td style="width: 16.6%;">U</td><td style="width: 16.6%;">V</td><td style="width: 16.6%;"> </td><td style="width: 16.6%;">X</td><td style="width: 16.6%;">Y</td><td style="width: 16.6%;">Z</td><td style="width: 16.6%;">0</td><td style="width: 16.6%;">1</td><td style="width: 16.6%;">2</td><td style="width: 16.6%;">3</td><td style="width: 16.6%;">4</td><td style="width: 16.6%;">5</td><td style="width: 16.6%;">6</td><td style="width: 16.6%;">7</td><td style="width: 16.6%;">8</td><td style="width: 16.6%;">9</td> </tr> </table>	A	B	C	D	E	F	G		I	J	K	L		N	O	P	Q	R	S	T	U	V		X	Y	Z	0	1	2	3	4	5	6	7	8	9	<table border="1" style="width:100%; border-collapse: collapse;"> <tr> <td style="width: 70%; padding: 5px;"> 1. Name of the Programme Applied: Post Basic B.Sc. Nursing </td> <td rowspan="5" style="width: 30%; text-align: center; vertical-align: middle; padding: 5px;"> PHOTOGRAPH Affix your latest passport size photograph (4 cm x 5 cm) duly attested by you </td> </tr> <tr> <td style="padding: 5px;"> 2. Programme Code: B S C N P B </td> </tr> <tr> <td style="padding: 5px;"> 3. Exam Centre Code: </td> </tr> <tr> <td style="padding: 5px;"> 4. Regional Centre Code: </td> </tr> <tr> <td style="padding: 5px;"> 5. Study Centre Code: </td> </tr> <tr> <td style="padding: 5px;"> 6. Medium of Study A1 English B2 Hindi C3 Others </td> </tr> <tr> <td style="padding: 5px;"> 7. State Code: </td> <td style="padding: 5px;"> <table border="1" style="width:100%; height: 20px; border-collapse: collapse;"> <tr> <td style="width: 100%;"> </td> </tr> </table> </td> </tr> <tr> <td style="padding: 5px;"> 8. a. Are your registered with (Ignou) (Please write relevant code in the box) A1 - Yes B2 - No </td> <td style="padding: 5px;"> If yes, Programme Code: Enrolment No. : </td> </tr> <tr> <td colspan="2" style="padding: 5px;"> <table border="1" style="width:100%; border-collapse: collapse;"> <tr> <td style="width: 70%; padding: 5px;"> 9. Name of the Candidate: (as in class X/XII mark sheet or equivalent certificate) </td> <td style="padding: 5px;"> <table border="1" style="width:100%; height: 20px; border-collapse: collapse;"> <tr><td style="width: 100%;"> </td></tr> <tr><td style="width: 100%;"> </td></tr> </table> </td> </tr> <tr> <td style="padding: 5px;"> 10. Father/Mother/Husband Name : (Please write S/o or D/o for Father/Mother's Name and W/o for Husband's Name) </td> <td style="padding: 5px;"> <table border="1" style="width:100%; height: 20px; border-collapse: collapse;"> <tr><td style="width: 100%;"> </td></tr> <tr><td style="width: 100%;"> </td></tr> </table> </td> </tr> </table> </td> </tr> <tr> <td colspan="6" style="padding: 5px;"> 11. Address for Correspondence : (Please do not give POST-BOX Number. Use Capital Letters and give space between words) </td> </tr> <tr> <td style="padding: 5px;">a) House No. :</td> <td style="padding: 5px;"></td> <td style="padding: 5px;">b) Street Name :</td> <td colspan="3" style="padding: 5px;"></td> </tr> <tr> <td style="padding: 5px;">c) Locality/Mohalla:</td> <td colspan="5" style="padding: 5px;"></td> </tr> <tr> <td style="padding: 5px;">d) Tehsil/District:</td> <td colspan="5" style="padding: 5px;"></td> </tr> <tr> <td style="padding: 5px;">e) City :</td> <td style="padding: 5px;"></td> <td style="padding: 5px;">f) Pin Code:</td> <td colspan="3" style="padding: 5px;"></td> </tr> <tr> <td style="padding: 5px;">g) State:</td> <td colspan="5" style="padding: 5px;"></td> </tr> <tr> <td style="padding: 5px;">12. Contact Details: a) Landline No.</td> <td style="padding: 5px;"> </td> <td style="padding: 5px;">Fax, if any:</td> <td colspan="3" style="padding: 5px;"></td> </tr> <tr> <td colspan="2" style="padding: 5px;"> b) e-mail ID: </td> <td colspan="4" style="padding: 5px;"> c) Mobile No.: </td> </tr> <tr> <td style="padding: 5px;">13. Date of Birth: Date</td> <td style="padding: 5px;"> /</td> <td style="padding: 5px;">Month</td> <td style="padding: 5px;"> /</td> <td style="padding: 5px;">Year</td> <td style="padding: 5px;"> </td> </tr> <tr> <td colspan="2" style="padding: 5px;">15. Gender (Pls. write relevant code in the box)</td> <td style="padding: 5px;">A1 - Male</td> <td style="padding: 5px;"></td> <td style="padding: 5px;">B2 - Female</td> <td style="padding: 5px;"></td> </tr> <tr> <td colspan="2" style="padding: 5px;">16. Category (Pls. write relevant code in the box)</td> <td style="padding: 5px;">A1 - General</td> <td colspan="3" style="padding: 5px;"></td> </tr> <tr> <td colspan="2" style="padding: 5px;">17. Area (Pls. write relevant code in the box)</td> <td style="padding: 5px;">A1 - Urban</td> <td colspan="3" style="padding: 5px;"></td> </tr> <tr> <td colspan="2" style="padding: 5px;">18. Marital Status (Pls. write relevant code in the box)</td> <td style="padding: 5px;">A1 - Married</td> <td colspan="3" style="padding: 5px;"></td> </tr> <tr> <td colspan="2" style="padding: 5px;">19. Religion (Pls. write relevant code in the box)</td> <td style="padding: 5px;">A1 - Hindu</td> <td style="padding: 5px;">D4 Sikh</td> <td style="padding: 5px;">G7 Parsi</td> <td style="padding: 5px;"></td> </tr> <tr> <td colspan="2" style="padding: 5px;">20. Social Status (Pls. write relevant code in the box)</td> <td style="padding: 5px;">A1 - Ex-Serviceman</td> <td colspan="3" style="padding: 5px;"></td> </tr> <tr> <td colspan="2" style="padding: 5px;">21. Whether Kashmiri Migrant (Pls. write relevant code in the box)</td> <td style="padding: 5px;">A1 - Yes</td> <td colspan="3" style="padding: 5px;"></td> </tr> <tr> <td colspan="2" style="padding: 5px;">22. Employment Status (Pls. write relevant code in the box)</td> <td style="padding: 5px;">A1 - Unemployed</td> <td colspan="3" style="padding: 5px;"></td> </tr> <tr> <td colspan="2" style="padding: 5px;"></td> <td style="padding: 5px;">B2 - IGNOU regular employee</td> <td colspan="3" style="padding: 5px;"></td> </tr> <tr> <td colspan="2" style="padding: 5px;"></td> <td style="padding: 5px;">C3 - Employed</td> <td colspan="3" style="padding: 5px;"></td> </tr> <tr> <td colspan="2" style="padding: 5px;"></td> <td style="padding: 5px;">D4 - KVS employee</td> <td colspan="3" style="padding: 5px;"></td> </tr> </table>					1. Name of the Programme Applied: Post Basic B.Sc. Nursing	PHOTOGRAPH Affix your latest passport size photograph (4 cm x 5 cm) duly attested by you	2. Programme Code: B S C N P B	3. Exam Centre Code: 	4. Regional Centre Code: 	5. Study Centre Code: 	6. Medium of Study A1 English B2 Hindi C3 Others	7. State Code: 	<table border="1" style="width:100%; height: 20px; border-collapse: collapse;"> <tr> <td style="width: 100%;"> </td> </tr> </table>		8. a. Are your registered with (Ignou) (Please write relevant code in the box) A1 - Yes B2 - No	If yes, Programme Code: Enrolment No. : 	<table border="1" style="width:100%; border-collapse: collapse;"> <tr> <td style="width: 70%; padding: 5px;"> 9. Name of the Candidate: (as in class X/XII mark sheet or equivalent certificate) </td> <td style="padding: 5px;"> <table border="1" style="width:100%; height: 20px; border-collapse: collapse;"> <tr><td style="width: 100%;"> </td></tr> <tr><td style="width: 100%;"> </td></tr> </table> </td> </tr> <tr> <td style="padding: 5px;"> 10. Father/Mother/Husband Name : (Please write S/o or D/o for Father/Mother's Name and W/o for Husband's Name) </td> <td style="padding: 5px;"> <table border="1" style="width:100%; height: 20px; border-collapse: collapse;"> <tr><td style="width: 100%;"> </td></tr> <tr><td style="width: 100%;"> </td></tr> </table> </td> </tr> </table>		9. Name of the Candidate: (as in class X/XII mark sheet or equivalent certificate)	<table border="1" style="width:100%; height: 20px; border-collapse: collapse;"> <tr><td style="width: 100%;"> </td></tr> <tr><td style="width: 100%;"> </td></tr> </table>			10. Father/Mother/Husband Name : (Please write S/o or D/o for Father/Mother's Name and W/o for Husband's Name)	<table border="1" style="width:100%; height: 20px; border-collapse: collapse;"> <tr><td style="width: 100%;"> </td></tr> <tr><td style="width: 100%;"> </td></tr> </table>			11. Address for Correspondence : (Please do not give POST-BOX Number. Use Capital Letters and give space between words)						a) House No. :		b) Street Name :				c) Locality/Mohalla:						d) Tehsil/District:						e) City :		f) Pin Code:				g) State:						12. Contact Details: a) Landline No.	 	Fax, if any:				b) e-mail ID: 		c) Mobile No.: 				13. Date of Birth: Date	 /	Month	 /	Year	 	15. Gender (Pls. write relevant code in the box)		A1 - Male		B2 - Female		16. Category (Pls. write relevant code in the box)		A1 - General				17. Area (Pls. write relevant code in the box)		A1 - Urban				18. Marital Status (Pls. write relevant code in the box)		A1 - Married				19. Religion (Pls. write relevant code in the box)		A1 - Hindu	D4 Sikh	G7 Parsi		20. Social Status (Pls. write relevant code in the box)		A1 - Ex-Serviceman				21. Whether Kashmiri Migrant (Pls. write relevant code in the box)		A1 - Yes				22. Employment Status (Pls. write relevant code in the box)		A1 - Unemployed						B2 - IGNOU regular employee						C3 - Employed						D4 - KVS employee			
A	B	C	D	E	F	G		I	J	K	L		N	O	P	Q	R	S	T	U	V		X	Y	Z	0	1	2	3	4	5	6	7	8	9																																																																																																																																																				
1. Name of the Programme Applied: Post Basic B.Sc. Nursing	PHOTOGRAPH Affix your latest passport size photograph (4 cm x 5 cm) duly attested by you																																																																																																																																																																																						
2. Programme Code: B S C N P B																																																																																																																																																																																							
3. Exam Centre Code: 																																																																																																																																																																																							
4. Regional Centre Code: 																																																																																																																																																																																							
5. Study Centre Code: 																																																																																																																																																																																							
6. Medium of Study A1 English B2 Hindi C3 Others																																																																																																																																																																																							
7. State Code: 	<table border="1" style="width:100%; height: 20px; border-collapse: collapse;"> <tr> <td style="width: 100%;"> </td> </tr> </table>																																																																																																																																																																																						
8. a. Are your registered with (Ignou) (Please write relevant code in the box) A1 - Yes B2 - No	If yes, Programme Code: Enrolment No. : 																																																																																																																																																																																						
<table border="1" style="width:100%; border-collapse: collapse;"> <tr> <td style="width: 70%; padding: 5px;"> 9. Name of the Candidate: (as in class X/XII mark sheet or equivalent certificate) </td> <td style="padding: 5px;"> <table border="1" style="width:100%; height: 20px; border-collapse: collapse;"> <tr><td style="width: 100%;"> </td></tr> <tr><td style="width: 100%;"> </td></tr> </table> </td> </tr> <tr> <td style="padding: 5px;"> 10. Father/Mother/Husband Name : (Please write S/o or D/o for Father/Mother's Name and W/o for Husband's Name) </td> <td style="padding: 5px;"> <table border="1" style="width:100%; height: 20px; border-collapse: collapse;"> <tr><td style="width: 100%;"> </td></tr> <tr><td style="width: 100%;"> </td></tr> </table> </td> </tr> </table>		9. Name of the Candidate: (as in class X/XII mark sheet or equivalent certificate)	<table border="1" style="width:100%; height: 20px; border-collapse: collapse;"> <tr><td style="width: 100%;"> </td></tr> <tr><td style="width: 100%;"> </td></tr> </table>			10. Father/Mother/Husband Name : (Please write S/o or D/o for Father/Mother's Name and W/o for Husband's Name)	<table border="1" style="width:100%; height: 20px; border-collapse: collapse;"> <tr><td style="width: 100%;"> </td></tr> <tr><td style="width: 100%;"> </td></tr> </table>																																																																																																																																																																																
9. Name of the Candidate: (as in class X/XII mark sheet or equivalent certificate)	<table border="1" style="width:100%; height: 20px; border-collapse: collapse;"> <tr><td style="width: 100%;"> </td></tr> <tr><td style="width: 100%;"> </td></tr> </table>																																																																																																																																																																																						
10. Father/Mother/Husband Name : (Please write S/o or D/o for Father/Mother's Name and W/o for Husband's Name)	<table border="1" style="width:100%; height: 20px; border-collapse: collapse;"> <tr><td style="width: 100%;"> </td></tr> <tr><td style="width: 100%;"> </td></tr> </table>																																																																																																																																																																																						
11. Address for Correspondence : (Please do not give POST-BOX Number. Use Capital Letters and give space between words)																																																																																																																																																																																							
a) House No. :		b) Street Name :																																																																																																																																																																																					
c) Locality/Mohalla:																																																																																																																																																																																							
d) Tehsil/District:																																																																																																																																																																																							
e) City :		f) Pin Code:																																																																																																																																																																																					
g) State:																																																																																																																																																																																							
12. Contact Details: a) Landline No.	 	Fax, if any:																																																																																																																																																																																					
b) e-mail ID: 		c) Mobile No.: 																																																																																																																																																																																					
13. Date of Birth: Date	 /	Month	 /	Year	 																																																																																																																																																																																		
15. Gender (Pls. write relevant code in the box)		A1 - Male		B2 - Female																																																																																																																																																																																			
16. Category (Pls. write relevant code in the box)		A1 - General																																																																																																																																																																																					
17. Area (Pls. write relevant code in the box)		A1 - Urban																																																																																																																																																																																					
18. Marital Status (Pls. write relevant code in the box)		A1 - Married																																																																																																																																																																																					
19. Religion (Pls. write relevant code in the box)		A1 - Hindu	D4 Sikh	G7 Parsi																																																																																																																																																																																			
20. Social Status (Pls. write relevant code in the box)		A1 - Ex-Serviceman																																																																																																																																																																																					
21. Whether Kashmiri Migrant (Pls. write relevant code in the box)		A1 - Yes																																																																																																																																																																																					
22. Employment Status (Pls. write relevant code in the box)		A1 - Unemployed																																																																																																																																																																																					
		B2 - IGNOU regular employee																																																																																																																																																																																					
		C3 - Employed																																																																																																																																																																																					
		D4 - KVS employee																																																																																																																																																																																					

23. Details of Scholarship being received, if any

a) Annual Scholarship Amount b) Deptt. offering Scholarship: c) Family Income (annual) d) Below Poverty Line e) Jain Inmates

Rs. A1 Government B2 Other Rs. A1 Yes B2 No A1 Yes B2 No

24. a) Whether a Person with Disability (Pls. write relevant code in the box) A1 - Yes B2 - No

b) If yes, kindly provide details of disability: (Pls. write relevant code in the box) A1 - Speech and Hearing Impairment B2 - Locomotor Impairment C3 - Visual Impairment D4 - Low Vision E5 - Any other, please specify

25. Educational Qualifications:

a) Whether 10th or 12th pass b) Main Subjects c) Year of Passing d) Board Code/University

A1 - 12th 1. _____ B2 - 10th 2. _____ Last two digits of the year Wherever required 3. _____ 4. _____

26. Professional Qualification General Nursing & Midwifery (GNM). Attach proof.

a. Completion of State Board/Council Examination Year % of Marks

b. General Nursing Year % of Marks

c. Midwifery Nursing Year % of Marks

d. Name of Registration Council

e. Date of Registration RN Year Reg. No. of RN

f. Date of Registration RM Year Reg. No. of RM

27. Marks Obtained in GNM:

Years	Total Marks Obtained	Total Max. Marks	Percentage
1 st Year			
2 nd Year			
3 rd Year			
6 Months (If applicable)			
Total			

28. Course done in lieu of Midwifery (male Nurse)

Fill up only one course done by you and put the Number and Name in the appropriate box

1. Psychiatric Nursing 6. Ophthalmic Nursing Name of Council

2. Tuberculosis 7. Leprosy

3. Operation Theatre 8. Oncology

4. Cancer Nursing 9. Occupational Period from to

5. Neurology

29. Working Experience will be considered after registration as RNRN upto last date of submission of Entrance Test Form as given in advertisement (Please give details chronologically):

S. No.	Name of Organisation	Designation	Dates of service						Length of Experience			
			From			To			Years			
			Day	Month	Year	Day	Month	Year	Day	Month	Year	
1.												
2.												
3.												
4.												
5.												
6.												
Grand Total												

Kind Attention: All Past and Present Students of IGNOU!

Now you rank our Performance...

Dear Student,

As the largest distance education institution in the world. We have always endeavoured to imbibe values and skills for the development of knowledge and competencies. And it is our belief that you as the former or present student are the best person to judge how far we have succeeded in our efforts. To gain your invaluable impression, we present here a short questionnaire. All you have to do is fill it and mail it back to us. You can also fill this questionnaire online by logging on to www.ignou.ac.in. Your invaluable inputs shall guide us towards a direction where we shall improve our services and evolve more student-friendly study programmes.

Vice-Chancellor, IGNOU.



Enrolment No. Name

Gender : M F

Age Group : Below 30 31-40 41-50 Above 51

Programme of Study

Year of Enrolment Year of Completion

Regional Centre State Study Centre

Please Indicate your satisfaction level by putting a tick mark on your choice.

Serial No.	Questions	Very Satisfied	Satisfied	Average	Dissatisfied	Very Dissatisfied
1.	Concepts are clearly explained in the printed learning material	<input type="checkbox"/>	<input type="checkbox"/>	<input type="checkbox"/>	<input type="checkbox"/>	<input type="checkbox"/>
2.	The learning materials were received in time	<input type="checkbox"/>	<input type="checkbox"/>	<input type="checkbox"/>	<input type="checkbox"/>	<input type="checkbox"/>
3.	Supplementary study material (like video/audio) available	<input type="checkbox"/>	<input type="checkbox"/>	<input type="checkbox"/>	<input type="checkbox"/>	<input type="checkbox"/>
4.	Academic counsellors explain the concepts clearly	<input type="checkbox"/>	<input type="checkbox"/>	<input type="checkbox"/>	<input type="checkbox"/>	<input type="checkbox"/>
5.	The counselling sessions were interactive	<input type="checkbox"/>	<input type="checkbox"/>	<input type="checkbox"/>	<input type="checkbox"/>	<input type="checkbox"/>
6.	Changes in the counselling schedule were communicated to you on time	<input type="checkbox"/>	<input type="checkbox"/>	<input type="checkbox"/>	<input type="checkbox"/>	<input type="checkbox"/>
7.	Examination procedures were clearly given to you	<input type="checkbox"/>	<input type="checkbox"/>	<input type="checkbox"/>	<input type="checkbox"/>	<input type="checkbox"/>
8.	Personnel in the study centres are helpful	<input type="checkbox"/>	<input type="checkbox"/>	<input type="checkbox"/>	<input type="checkbox"/>	<input type="checkbox"/>
9.	Academic counselling sessions are well organised	<input type="checkbox"/>	<input type="checkbox"/>	<input type="checkbox"/>	<input type="checkbox"/>	<input type="checkbox"/>
10.	Guidance from the Programme Coordinators and Teachers from the School	<input type="checkbox"/>	<input type="checkbox"/>	<input type="checkbox"/>	<input type="checkbox"/>	<input type="checkbox"/>
11.	Assignments are returned in time	<input type="checkbox"/>	<input type="checkbox"/>	<input type="checkbox"/>	<input type="checkbox"/>	<input type="checkbox"/>
12.	Feedback on the assignments helped in clarifying the concepts	<input type="checkbox"/>	<input type="checkbox"/>	<input type="checkbox"/>	<input type="checkbox"/>	<input type="checkbox"/>
13.	Project proposals are clearly marked and discussed	<input type="checkbox"/>	<input type="checkbox"/>	<input type="checkbox"/>	<input type="checkbox"/>	<input type="checkbox"/>
14.	Studying in this programme provided the knowledge of the subject	<input type="checkbox"/>	<input type="checkbox"/>	<input type="checkbox"/>	<input type="checkbox"/>	<input type="checkbox"/>
15.	Results and grade card of the examination were provided on time	<input type="checkbox"/>	<input type="checkbox"/>	<input type="checkbox"/>	<input type="checkbox"/>	<input type="checkbox"/>
16.	Overall, I am satisfied with the programme	<input type="checkbox"/>	<input type="checkbox"/>	<input type="checkbox"/>	<input type="checkbox"/>	<input type="checkbox"/>

After filling cut out this questionnaire and mail it to:
 STRIDE, Block-14, IGNOU, Maidan Garhi, New Delhi-110 068

SOHS-IGNOU/P.O. 7T/May, 2014